

*Preliminary Specifications Subject to Change without Notice*

## DESCRIPTION

The JW®5068A is a monolithic buck switching regulator based on I2 architecture for fast transient response. Operating with an input range of 4V~23V, JW5068A delivers 8A of continuous output current with two integrated N-Channel MOSFETs. The internal synchronous power switches provide high efficiency without the use of an external Schottky diode. At light loads, the regulator operates in low frequency to maintain high efficiency and low output ripples.

JW5068A guarantees robustness with output short protection, thermal protection, current run-away protection, and input under voltage lockout.

JW5068A is available in QFN3X3-20 package, which provide a compact solution with minimal external components.

Company's Logo is Protected, "JW" and "JOULWATT" are Registered Trademarks of JoulWatt technology Inc.

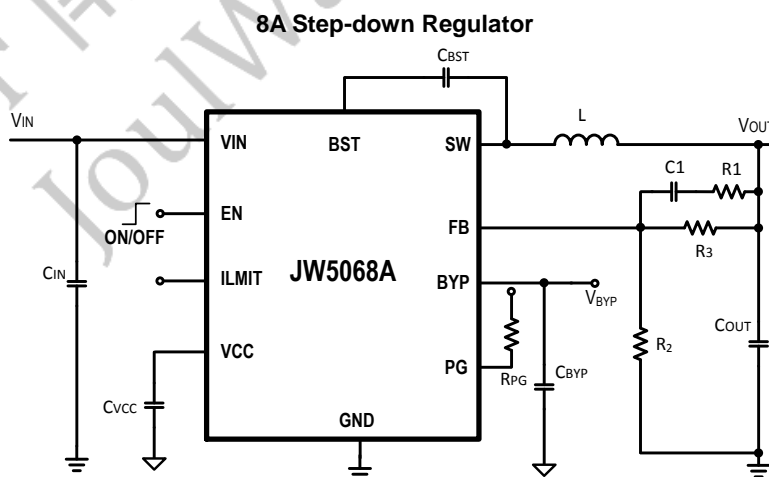
## FEATURES

- 4V to 23V operating input range
- 8A continuous / 16A peak output current
- Up to 95% efficiency
- High efficiency at light load
- 500kHz switching frequency
- External bypass input
- Programmable valley current limit
- Power good indicator
- Input under voltage lockout
- Output discharge function
- Output over voltage latch off protection
- Output short protection
- Thermal protection
- RoHS compliant and halogen free
- Available in QFN3X3-20 package

## APPLICATIONS

- Industrial and commercial low power system
- Notebook
- LDO monitors and TVs
- Green electronics/ appliances

## TYPICAL APPLICATION



## ORDER INFORMATION

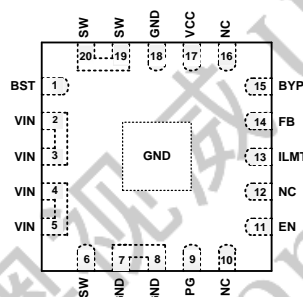
| DEVICE <sup>1)</sup> | PACKAGE   | TOP MARKING <sup>2)</sup> |
|----------------------|-----------|---------------------------|
| JW5068AQFNF#TRPBF    | QFN3X3-20 | JW5068A<br>YW□□□□□        |

## Notes:

- 1) JW□□□□#TRPBF  
 PB Free  
 Tape and Reel(If "TR" is not shown, it means tube)  
 Package Code  
 Part No.
- 2) Line1: JW□□□□□  
 Product code  
 Joulwatt LOGO
- Line2: YW□□□□□  
 Lot number  
 Week code  
 Year code

## PIN CONFIGURATION

## TOP VIEW

ABSOLUTE MAXIMUM RATING<sup>1)</sup>

|   |   |
|---|---|
| VIN, EN, PG, ILMT Pin.....                  | -0.3V to 28V                            |
| SW Pin.....                                 | -0.3V(-5V for 5ns)(-1V for 20ns) to 28V |
| BST Pin .....                               | SW-0.3V to SW+5V(+5.8V for 150ns)       |
| All other Pins .....                        | -0.3V to 6V                             |
| Junction Temp. <sup>2)</sup> .....          | 150°C                                   |
| Lead Temperature .....                      | 260°C                                   |
| ESD Susceptibility (Human Body Model) ..... | 2kV                                     |

RECOMMENDED OPERATING CONDITIONS<sup>3)</sup>

|                                     |                |
|-------------------------------------|----------------|
| Input Voltage VIN .....             | 4V to 23V      |
| Output Voltage VOUT.....            | 0.6V to VIN-3V |
| Ambient Temperature Range .....     | -40°C to 85°C  |
| Operating Junction Temperature..... | -40°C to 125°C |

THERMAL PERFORMANCE<sup>4)</sup>

|                | $\theta_{JA}$ | $\theta_{JC}$ |
|----------------|---------------|---------------|
| QFN3X3-20..... | 30....        | 4.5°C/W       |

**Note:**

- 1) Exceeding these ratings may damage the device. These stress ratings do not imply function operation of the device at any other conditions beyond those indicated under RECOMMENDED OPERATING CONDITIONS.
- 2) The JW5068A includes thermal protection that is intended to protect the device in overload conditions. Continuous operation over the specified absolute maximum operating junction temperature may damage the device.
- 3) The device is not guaranteed to function outside of its operating conditions.
- 4) Measured on JESD51-7, 4-layer PCB.

For 南京奥视威 Use Only  
JoulWatt Confidential

## ELECTRICAL CHARACTERISTICS

| VIN=12V, TA=25 °C, Unless otherwise stated.   |                       |                              |         |      |       |      |
|---|-----------------------|------------------------------|---------|------|-------|------|
| Item  | Symbol                | Conditions                   | Min.    | Typ. | Max.  | Unit |
| VIN Under Voltage Lock-out Threshold          | VIN_MIN               | VIN rising                   | 2.7     | 2.91 | 3.12  | V    |
|   |                       | VIN falling                  | 2.45    | 2.7  | 2.95  | V    |
| VIN Under Voltage Lockout Hysteresis          | VIN_MIN_HYST          |                              |         | 180  |       | mV   |
| Shutdown Current                              | ISD                   | VEN=0V                       |         | 2    | 5     | μA   |
| Supply Current                                | IQ                    | VEN=5V, VBYP=5V              |         | 45   | 70    | μA   |
| EN Rising Threshold                           | VEN_H                 |                              | 0.8     |      |       | V    |
| EN Falling Threshold                          | VEN_L                 |                              |         |      | 0.4   | V    |
| Feedback Voltage                              | VFB                   | 4V<V<VIN<23V                 | 594     | 600  | 606   | mV   |
| Top Switch Resistance <sup>5)</sup>           | RDS(ON)T              |                              |         | 20   |       | mΩ   |
| Bottom Switch Resistance <sup>5)</sup>        | RDS(ON)B              |                              |         | 10   |       | mΩ   |
| Top Switch Leakage Current                    | I <sub>LEAK_TOP</sub> | VIN=23V, VSW=0V              |         |      | 1     | μA   |
| Bottom Switch Leakage Current                 | I <sub>LEAK_BOT</sub> | VIN=23V, VSW=23V             |         |      | 2     | μA   |
| Bottom Switch Current Limit                   | ILIM                  | ILIM = "0"                   | 8       |      |       | A    |
|   |                       | ILIM = Floating              | 12      |      |       | A    |
|   |                       | ILIM = "1"                   | 16      |      |       | A    |
| ILMIT Rising Threshold <sup>5)</sup>          | V <sub>LIMTH</sub>    |                              | VCC-0.8 |      | VCC   | V    |
| ILMIT Falling Threshold <sup>5)</sup>         | V <sub>LIMTL</sub>    |                              |         |      | 0.8   | V    |
| Minimum On Time <sup>5)</sup>                 | TON_MIN               |                              |         | 100  |       | ns   |
| Minimum Off Time                              | TOFF_MIN              | VFB=0.4V                     |         | 100  |       | ns   |
| Switching Frequency <sup>5)</sup>             | Fs                    |                              |         | 500  |       | kHz  |
| Discharge FET Ron                             | R <sub>DIS</sub>      |                              |         | 50   |       | Ω    |
| Soft-Start Time <sup>5)</sup>                 | T <sub>SS</sub>       |                              |         | 400  |       | us   |
| VCC Output                                    | VCC                   | VIN=12V                      | 4.7     | 5    | 5.25  | V    |
| Power Good Threshold                          | PGD_TH                | VFB Rising                   | 92.5%   | 95%  | 98.5% | VREF |
| Power Good Hysteresis <sup>5)</sup>           | PGD_HYS               |                              |         | 5%   |       | VREF |
| Power Good Delay Time <sup>5)</sup>           | PGD_DLY               | Low to high                  |         | 300  |       | us   |
|   |                       | High to low                  |         | 10   |       | us   |
| Power Good Sink Current                       | IPG                   | PG=0.5V                      | 2       |      |       | mA   |
| Output Over-voltage Threshold                 |                       | VFB Rising                   | 115%    | 120% | 125%  | VREF |
| Output Over-voltage Hysteresis <sup>5)</sup>  |                       |                              |         | 5%   |       | VREF |
| Output Over-voltage Delay Time <sup>5)</sup>  |                       |                              |         | 20   |       | us   |
| Output Under-voltage Threshold                |                       | VFB Falling                  | 55%     | 60%  | 65%   | VREF |
| Output Under-voltage Delay Time <sup>5)</sup> |                       | FB forced below UV threshold |         | 100  |       | us   |

| <i>V<sub>IN</sub>=12V, T<sub>A</sub>=25 °C, Unless otherwise stated.</i> |                       |            |      |      |      |      |
|--|-----------------------|------------|------|------|------|------|
| Item   | Symbol                | Conditions | Min. | Typ. | Max. | Unit |
| Bypass Switch R <sub>on</sub>  | R <sub>BYP</sub>      |            |      | 9.5  |      | Ω    |
| Bypass Switch Turn-on Voltage  | V <sub>BYP_ON</sub>   |            | 4.47 | 4.7  |      | V    |
| Bypass Switch Switchover Hysteresis <sup>5)</sup>                        | V <sub>BYP_HYS</sub>  |            |      | 0.2  |      | V    |
| Thermal Shutdown <sup>5)</sup>   | T <sub>TSD</sub>      |            |      | 150  |      | °C   |
| Thermal Shutdown Hysteresis <sup>5)</sup>                                | T <sub>TSD_HYST</sub> |            |      | 15   |      | °C   |

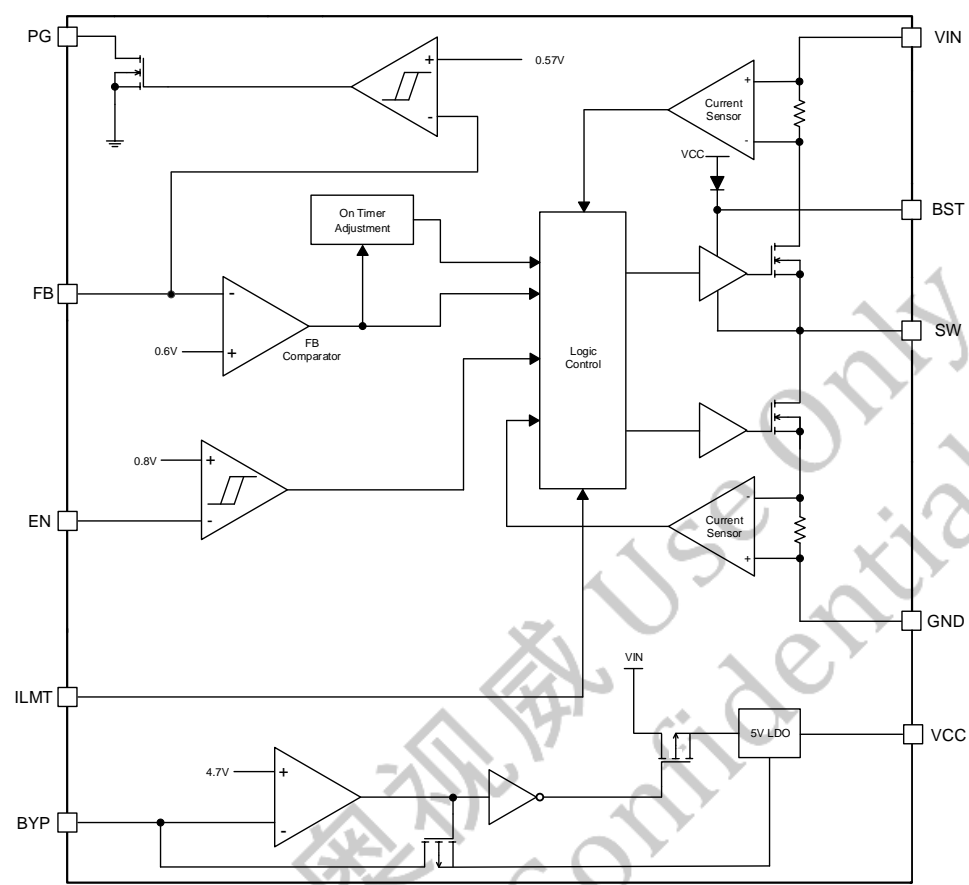
**Note:**

5) Guaranteed by design.

## PIN DESCRIPTION

| Pin       | Name | Description   |
|-----------|------|---|
| 1         | BST  | Connect a 0.1uF capacitor between BST and SW pin to supply current for the top switch driver.   |
| 2,3,4,5   | VIN  | Input voltage pin. VIN supplies power to the IC. Connect a 4V to 23V supply to VIN and bypass VIN to GND with a suitably large capacitor to eliminate noise on the input to the IC.   |
| 6,19,20   | SW   | SW is the switching node that supplies power to the output. Connect the output LC filter from SW to the output load.  |
| 7,8,18,EP | GND  | Ground pin  |
| 9         | PG   | Power good monitor output. Open drain output when the output voltage is within 95% to 120% of regulation point.   |
| 11        | EN   | Enable Control. Pull this pin high to turn on the Buck. Do not leave this pin floating.   |
| 10,12,16  | NC   |   |
| 13        | ILMT | Current Limit Setting Pin. The current limit is set to 8A, 12A or 16A when this pin is pull low, floating or pull high respectively.  |
| 14        | FB   | Output feedback pin. FB senses the output voltage and is regulated by the control loop to 0.6V. Connect a resistive divider at FB.  |
| 15        | BYP  | Bypass input for the internal LDO. BYP is externally connected to the output of switching regulator. When the BYP voltage rises above the bypass switch turn-on threshold, the power supply of the internal LDO regulator changes to the external source. |
| 17        | VCC  | 5V Linear Regulator Output for Internal Control Circuit. A capacitor (typical 2.2uF) should be connected to GND. Don't connect to external Load.  |

BLOCK DIAGRAM

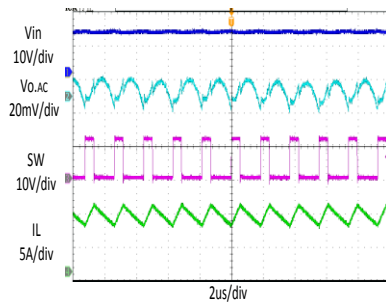


## TYPICAL PERFORMANCE CHARACTERISTICS

VIN =12V, VOUT= 3.3V, L = 1.5 $\mu$ H, Cout = 4\*22 $\mu$ F, TA = +25°C, unless otherwise noted

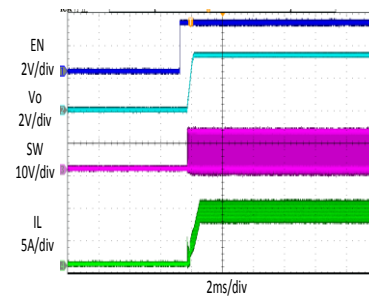
### Steady State Test

VIN=12V, VOUT=3.3V  
IOUT =8A



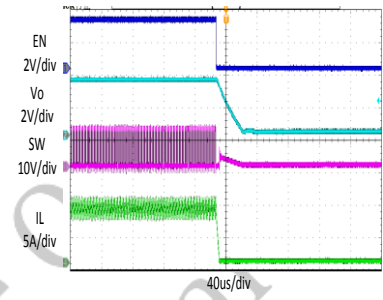
### Startup through Enable

VIN=12V, VOUT =3.3V  
IOUT =8A



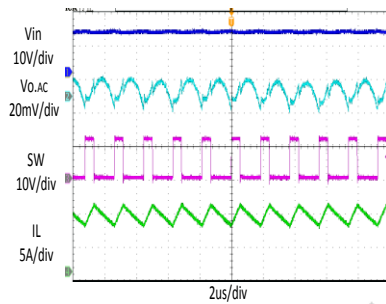
### Shutdown through Enable

VIN=12V, VOUT =3.3V  
IOUT =8A



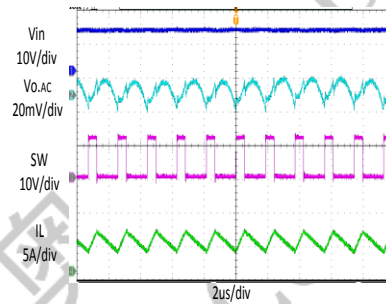
### Heavy Load Operation

8A LOAD



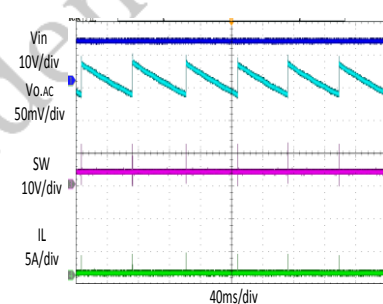
### Medium Load Operation

4A LOAD



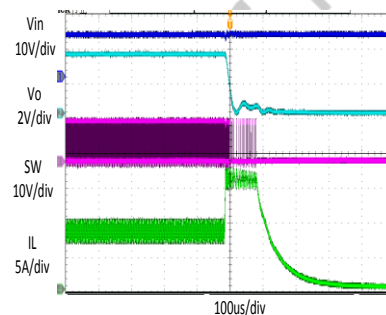
### Light Load Operation

0 A LOAD



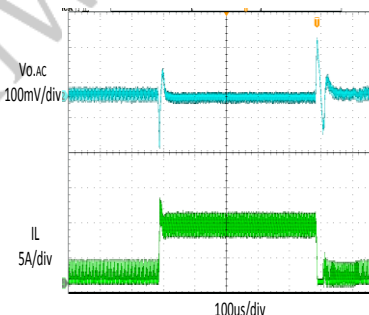
### Short Circuit Protection

VIN=12V, VOUT =3.3V  
IOUT =8A- Short



### Load Transient

C1=10pF, R1=0k  
0.8A LOAD → 8A LOAD → 0.8A LOAD





## TYPICAL PERFORMANCE CHARACTERISTICS (continued)

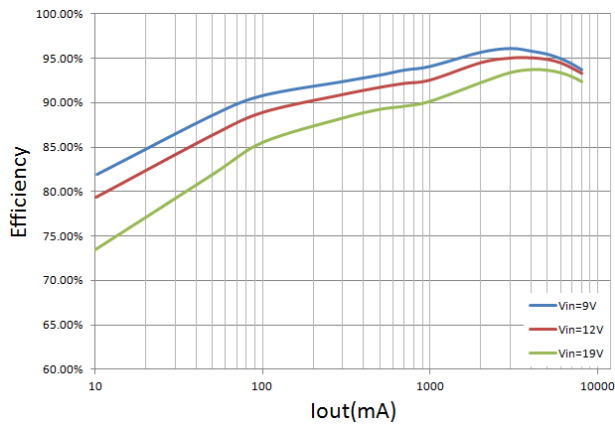


Figure 1. Efficiency vs Load Current  
(Vout=3.3V, L=1.5uH)

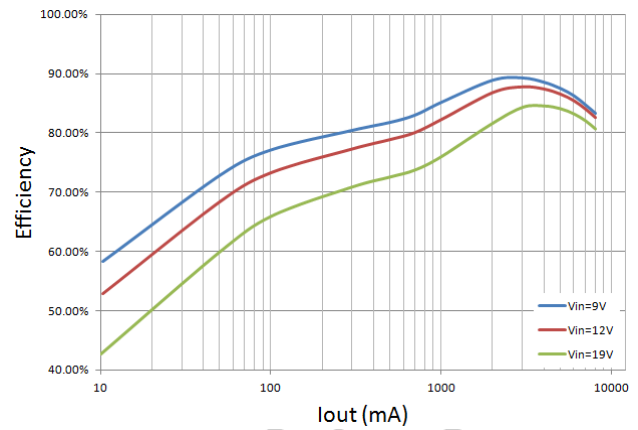


Figure 2. Efficiency vs Load Current  
(Vout=1V, L=1uH)

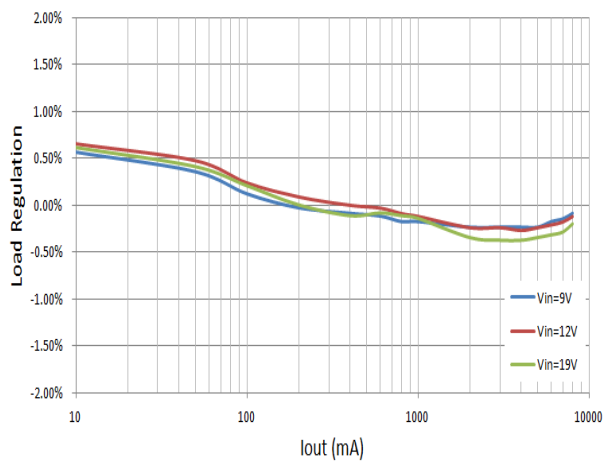


Figure 3. Load regulation vs Load Current  
(Vout=3.3V, L=1.5uH)

## FUNCTIONAL DESCRIPTION

JW5068A is a synchronous step-down regulator based on I2 control architecture. It regulates input voltages from 4V to 23V down to an output voltage as low as 0.6V, and is capable of supplying up to 8A continuous, 16A peak load current.

### Power Switch

N-Channel MOSFET switches are integrated on the JW5068A to down convert the input voltage to the regulated output voltage. Since the top MOSFET needs a gate voltage greater than the input voltage, a boost capacitor connected between BST and SW pins is required to drive the gate of the top switch. The boost capacitor is charged by the VCC when SW is low.

### VIN Under-Voltage Protection

In addition to the enable function, the JW5068A provides an Under Voltage Lock-out (UVLO) function that monitors the input voltage. To prevent operation without fully-enhanced internal MOSFET switches, this function inhibits switching when input voltage drops below the UVLO-falling threshold. The IC resumes switching when input voltage exceeds the UVLO-rising threshold.

### Soft Start

The JW5068A has an internal soft-start function to prevent large inrush current and output voltage overshoot when the converter starts up. The soft-start (SS) automatically begins once the chip is enabled. During soft-start, it clamps the ramping of internal reference voltage which is compared with FB signal. The typical soft-start duration is 0.4ms.

### Enable and Disable

The JW5068A's EN is used to control converter, the enable voltage (EN) has low and high

threshold voltage. When VEN is below its high threshold voltage, the IC enters shutdown mode. When VEN exceeds its high threshold voltage, the converter is fully operational. In shutdown mode, the entire regulator of JW5068A is off.

### Power Good

The JW5068A has power-good (PG) output. The PG pin is the open drain of a MOSFET. Connect to Vcc or another voltage source through a resistor. It is high if the output voltage is higher than 95% and lower than 120% of the nominal voltage.

### Output Voltage Over-voltage Protection

JW5068A integrates both output over-voltage protection and under-voltage protection. If the output voltage rises above the regulation level, the high-side MOSFET naturally remains off and the synchronous rectifier will turn on until the inductor current reaches the zero. If the output voltage exceeds the OVP threshold for longer than 20  $\mu$ s (typical), the OVP function is triggered. If the output voltage drops below the UVP trip threshold for longer than 100  $\mu$ s (typical), the UVP function is triggered.

JW5068A use latch-off mode in OVP and UVP. When the protection function is triggered, the IC will shut down. The IC stops switching and is latched off. To restart operation, toggle EN or power the IC off and then on again.

### Current Limit

The JW5068A current limit is adjustable (8A, 12A, 16A) by ILMT pin and it is a cycle-by-cycle "valley" mechanism, measuring the inductor current through the synchronous rectifier during the off-time while the inductor current ramps down. The current is determined by measuring the voltage between

source and drain of the synchronous rectifier, adding temperature compensation for greater accuracy. If the current exceeds the current limit, the turn-on signal of top MOSFET is inhibited until the inductor current ramps down below the current limit. Thus, only when the inductor current is well below the current limit, another on-time is permitted. If the output current exceeds the available inductor current (controlled by the current limit mechanism), the output voltage will drop. If it drops below the output under-voltage protection level, the IC will stop switching to avoid excessive heat.

### **Linear Regulator (VCC)**

The JW5068A integrates a 5V linear regulator (VCC). When the input voltage of BYP pin is lower than the switch over threshold 4.7V, the VCC regulator steps down input voltage to supply both internal circuitry and gate drivers.

When the input voltage of BYP pin is higher than the switch over threshold 4.7V, an automatic circuit will change the power source of linear regulator from VIN path to external path, therefore the power dissipation of linear regulator will be decrease efficiently. A 2.2uF ceramic capacitor is recommended to bypass VCC to GND. Do not connect the VCC pin to external loads.

### **Thermal Protection**

When the temperature of the JW5068A rises above 150°C, it is forced into thermal protection (OTP). The JW5068A uses latch-off mode in OTP. When the protection function is triggered, the IC will shut down. The IC stops switching and is latched off. To restart operation, toggle EN or power the IC off and then on again.

## APPLICATION INFORMATION

### Output Voltage Set

The output voltage is determined by the resistor divider connected at the FB pin, and the voltage ratio is:

$$V_{FB} = V_{OUT} * \frac{R_2}{R_2 + R_3}$$

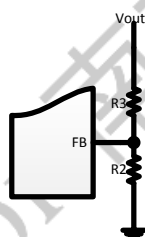
where  $V_{FB}$  is the feedback voltage and  $V_{OUT}$  is the output voltage.

Choose  $R_2$  around 15k $\Omega$ , and then  $R_3$  can be calculated by:

$$R_3 = R_2 * \left( \frac{V_{OUT}}{0.6} - 1 \right)$$

Too large resistance and the following table lists the recommended values.

| $V_{OUT}(V)$ | $R_2(k\Omega)$ | $R_3(k\Omega)$ |
|--------------|----------------|----------------|
| 1            | 10             | 6.65           |
| 1.2          | 10             | 10             |
| 1.5          | 10             | 15             |
| 2.5          | 17.8           | 56.2           |
| 3.3          | 17.8           | 80.6           |
| 5            | 17.8           | 130            |



### Input Capacitor

The input capacitor is used to supply the AC input current to the step-down converter and maintaining the DC input voltage. The ripple current through the input capacitor can be calculated by:

$$I_{CIN} = I_{OUT} * \sqrt{\frac{V_{OUT}}{V_{IN}} * \left( 1 - \frac{V_{OUT}}{V_{IN}} \right)}$$

where  $I_{OUT}$  is the load current,  $V_{OUT}$  is the output

voltage,  $V_{IN}$  is the input voltage.

Thus the input capacitor can be calculated by the following equation when the input ripple voltage is determined.

$$C_{IN} = \frac{I_{OUT}}{f_s * \Delta V_{IN}} * \frac{V_{OUT}}{V_{IN}} * \left( 1 - \frac{V_{OUT}}{V_{IN}} \right)$$

where  $C_{IN}$  is the input capacitance value,  $f_s$  is the switching frequency,  $\Delta V_{IN}$  is the input ripple voltage. The input capacitor can be electrolytic, tantalum or ceramic. To minimizing the potential noise, a small X5R or X7R ceramic capacitor, i.e. 0.1 $\mu$ F, should be placed as close to the IC as possible when using electrolytic capacitors. A 10 $\mu$ F\*4 ceramic capacitor is recommended in typical application.

### Output Capacitor

The output capacitor is required to maintain the DC output voltage, and the capacitance value determines the output ripple voltage. The output voltage ripple can be calculated by:

$$\Delta V_{OUT} = \frac{V_{OUT}}{f_s * L} * \left( 1 - \frac{V_{OUT}}{V_{IN}} \right) * \left( R_{ESR} + \frac{1}{8 * f_s * C_{OUT}} \right)$$

where  $C_{OUT}$  is the output capacitance value and  $R_{ESR}$  is the equivalent series resistance value of the output capacitor.

The output capacitor can be low ESR electrolytic, tantalum or ceramic, which lower ESR capacitors get lower output ripple voltage. The output capacitors also affect the system stability and transient response, and a 66 $\mu$ F~88 $\mu$ F ceramic capacitor is recommended in typical application.

### Inductor

The inductor is used to supply constant current to the output load, and the value determines the

ripple current which affect the efficiency and the output voltage ripple. The ripple current is typically allowed to be 40% of the maximum switch current limit, thus the inductance value can be calculated by:

$$L = \frac{V_{OUT}}{f_s * \Delta I_L} * \left(1 - \frac{V_{OUT}}{V_{IN}}\right)$$

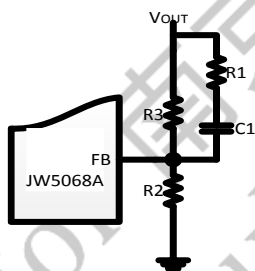
where  $V_{IN}$  is the input voltage,  $V_{OUT}$  is the output voltage,  $f_s$  is the switching frequency, and  $\Delta I_L$  is the peak-to-peak inductor ripple current.

### External Bootstrap Capacitor

A bootstrap capacitor is required to supply voltage to the top switch driver. A 0.1uF low ESR ceramic capacitor is recommended to be connected to the BST pin and SW pin.

### Feedforward Capacitor

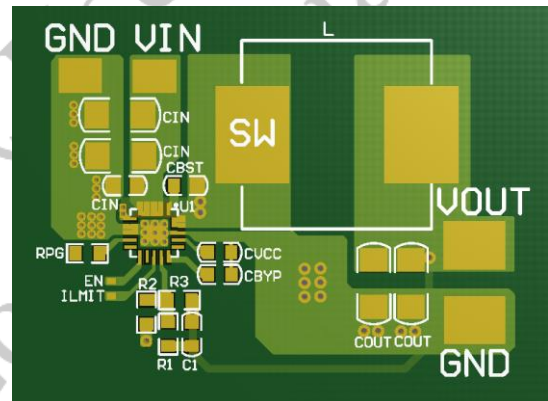
In order to minimize the ripple of output voltage at load transient, a feedforward capacitor in series with a resistor should be in parallel to the upper divider resistor. Choose  $R_1$  around 0kΩ and  $C_1$  around 10pF.



### PCB Layout Note

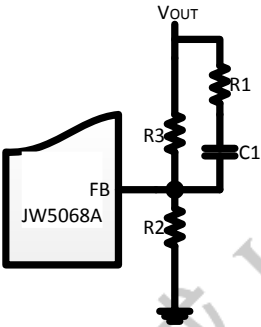
For minimum noise problem and best operating performance, We should place the following components close to the IC:  $C_{IN}$ ,  $C_{VCC}$ ,  $L$ ,  $R_2$  and  $R_3$ .

1. Place the input decoupling capacitor as close to JW5068A ( $V_{IN}$  pin and GND) as possible to eliminate noise at the input pin. The loop area formed by input capacitor and GND must be minimized.
2. Put the feedback trace as far away from the inductor and noisy power traces as possible.
3. The ground plane on the PCB should be as large as possible for better heat dissipation.



External Components Suggestion:

| Vout(V) | R2 (kΩ) | R3 (kΩ) | R1 (kΩ) | C1 (pF) | L(uH) | COUT(uF) |
|---------|---------|---------|---------|---------|-------|----------|
| 1       | 10      | 6.65    | 0       | 10      | 1     | 66~88    |
| 1.2     | 10      | 10      | 0       | 10      | 1     | 66~88    |
| 1.5     | 10      | 15      | 0       | 10      | 1     | 66~88    |
| 2.5     | 17.8    | 56.2    | 0       | 10      | 1.5   | 66~88    |
| 3.3     | 17.8    | 80.6    | 0       | 10      | 1.5   | 66~88    |
| 5       | 17.8    | 130     | 0       | 10      | 1.5   | 66~88    |



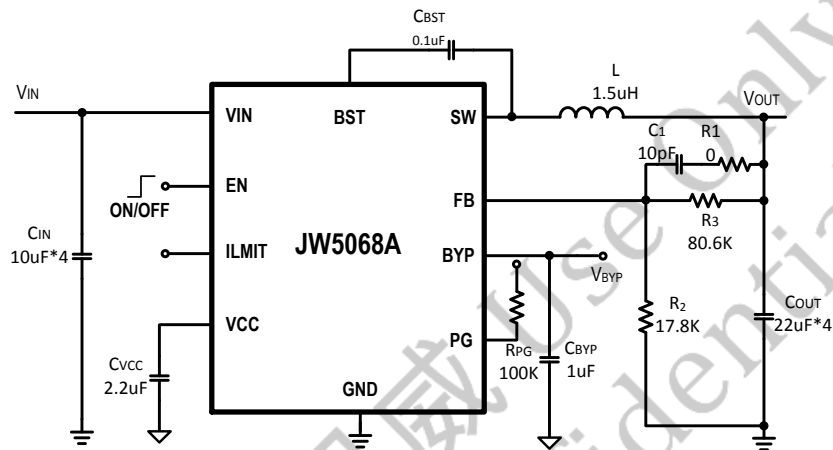
## REFERENCE DESIGN

## Reference 1:

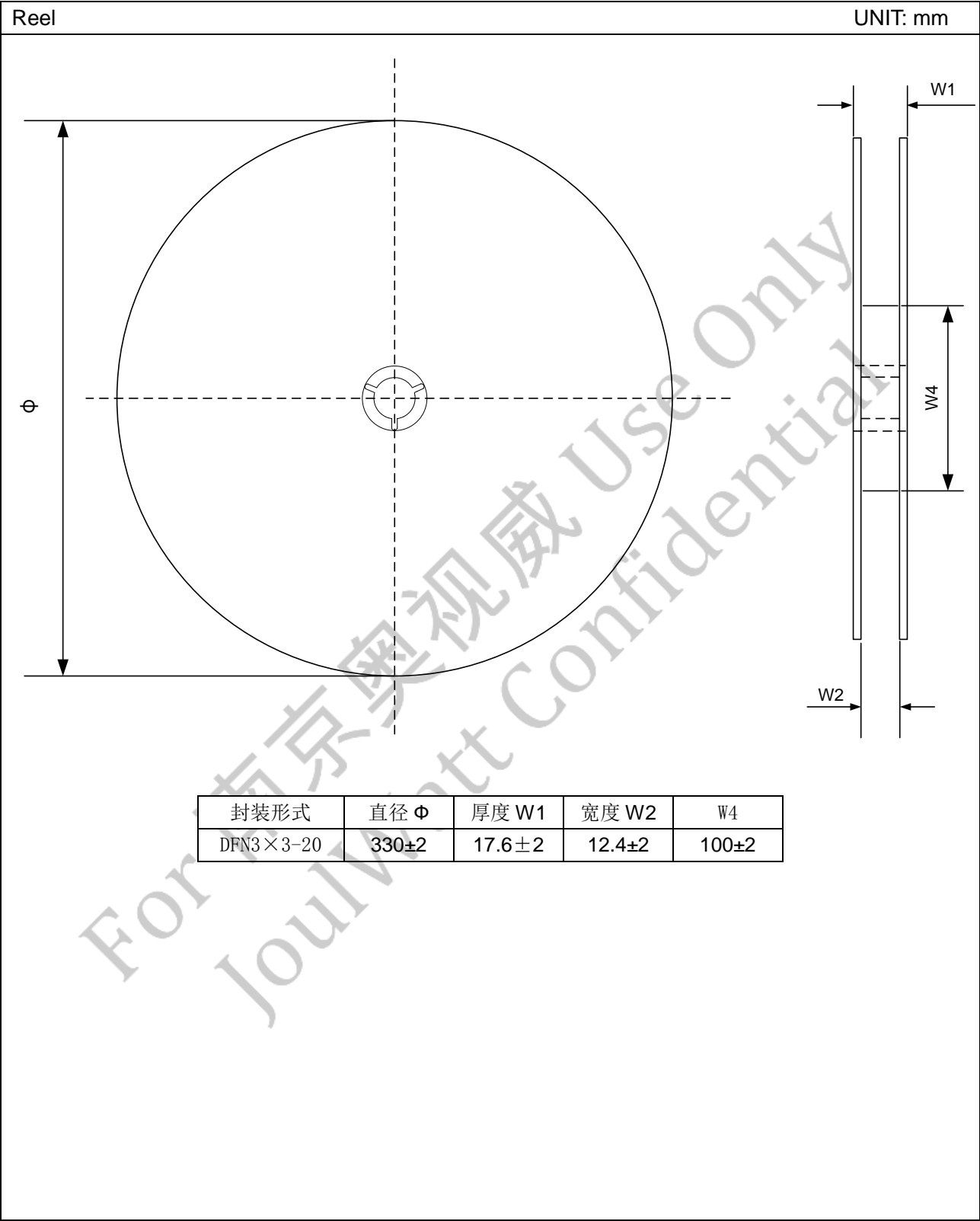
V<sub>IN</sub> : 4V~23V

V<sub>OUT</sub>: 3.3V

I<sub>OUT</sub>: 0~8A



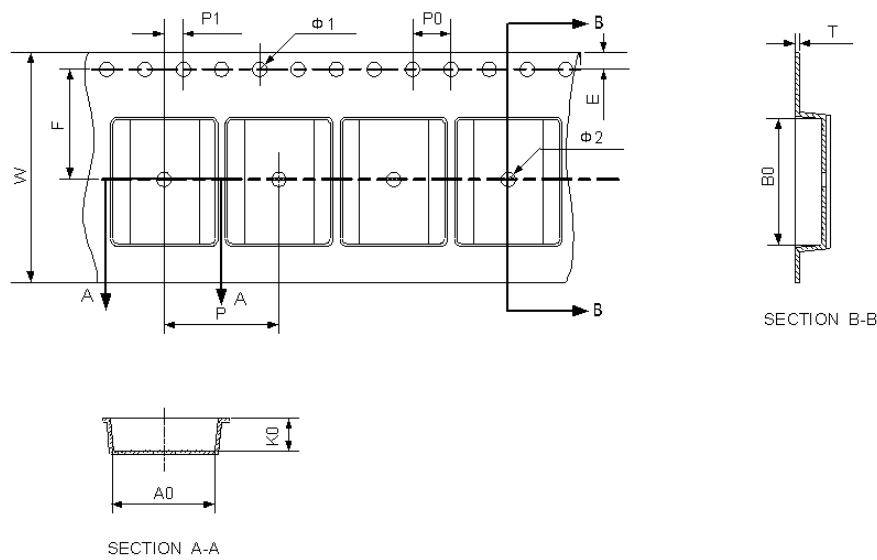
TAPE AND REEL INFORMATION



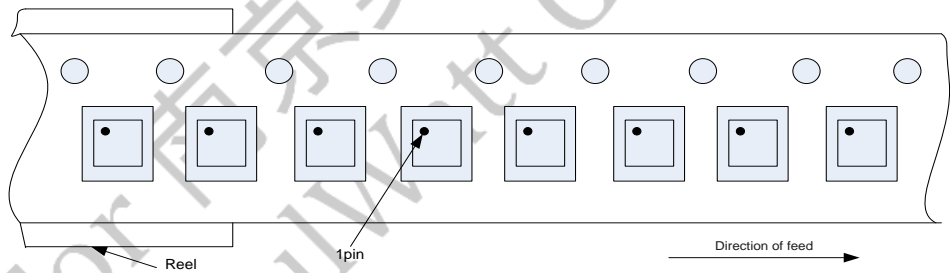


Carrier Tape

UNIT: mm

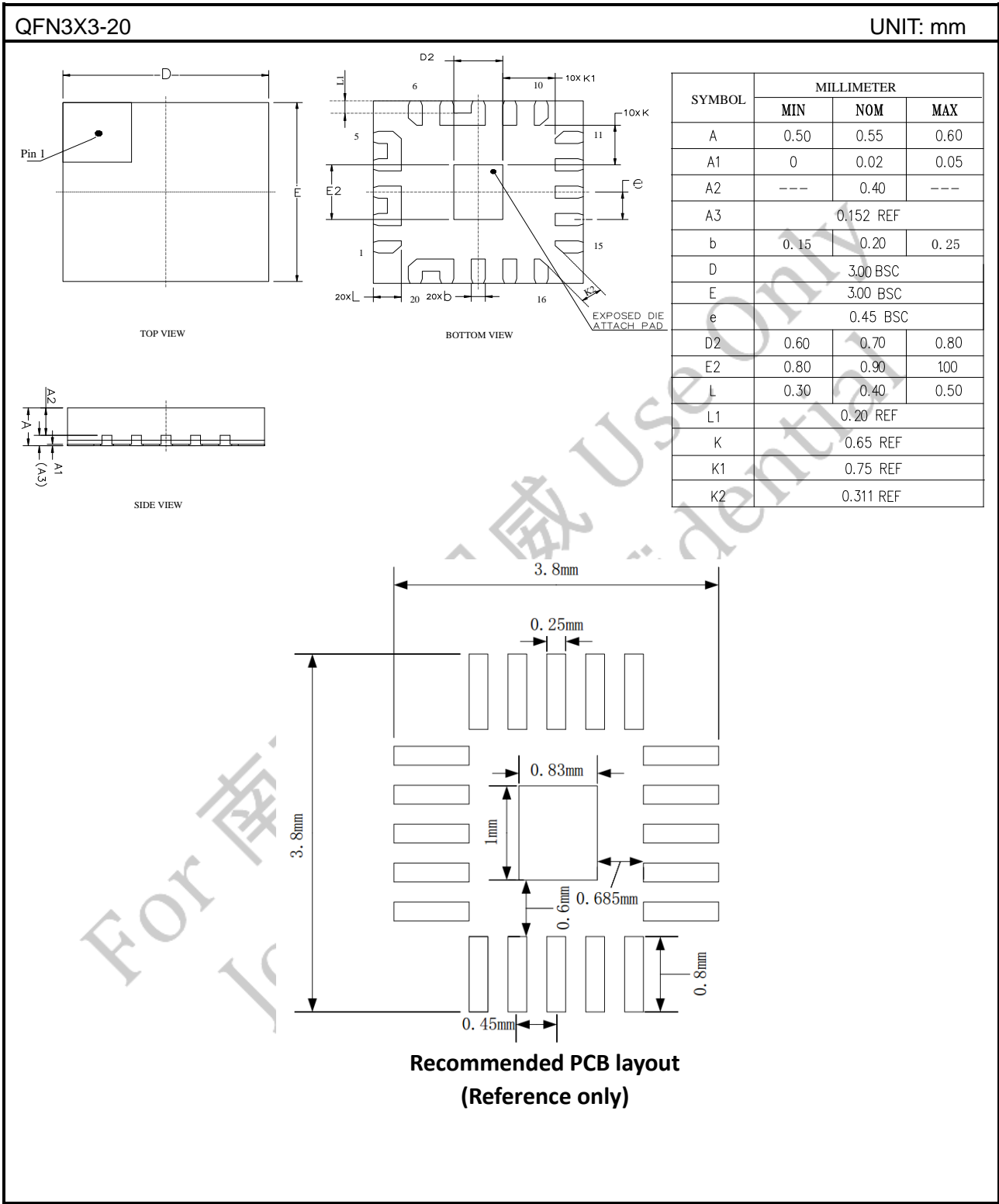


| 封装形式      | P0      | P1      | P       | A0       | B        | W        | T0        | K0       | Φ1      | Φ2      | E        | F         |
|-----------|---------|---------|---------|----------|----------|----------|-----------|----------|---------|---------|----------|-----------|
| QFN3x3-20 | 4.0±0.1 | 2.0±0.1 | 8.0±0.2 | 3.30±0.2 | 3.30±0.2 | 12.0±0.3 | 0.25±0.20 | 0.75±0.2 | 1.50min | 1.50min | 1.75±0.1 | 5.50±0.10 |



\*Order quantity needs to be multiple of the minimum quantity.

PACKAGE OUTLINE



## IMPORTANT NOTICE

- Joulwatt Technology Inc. reserves the right to make modifications, enhancements, improvements, corrections or other changes without further notice to this document and any product described herein.
- Any unauthorized redistribution or copy of this document for any purpose is strictly forbidden.
- Joulwatt Technology Inc. does not warrant or accept any liability whatsoever in respect of any products purchased through unauthorized sales channel.

For 南京奥视威 Use Only  
JoulWatt Confidential

*Copyright © 2017 JW5068A Incorporated.*

*All rights are reserved by Joulwatt Technology Inc.*