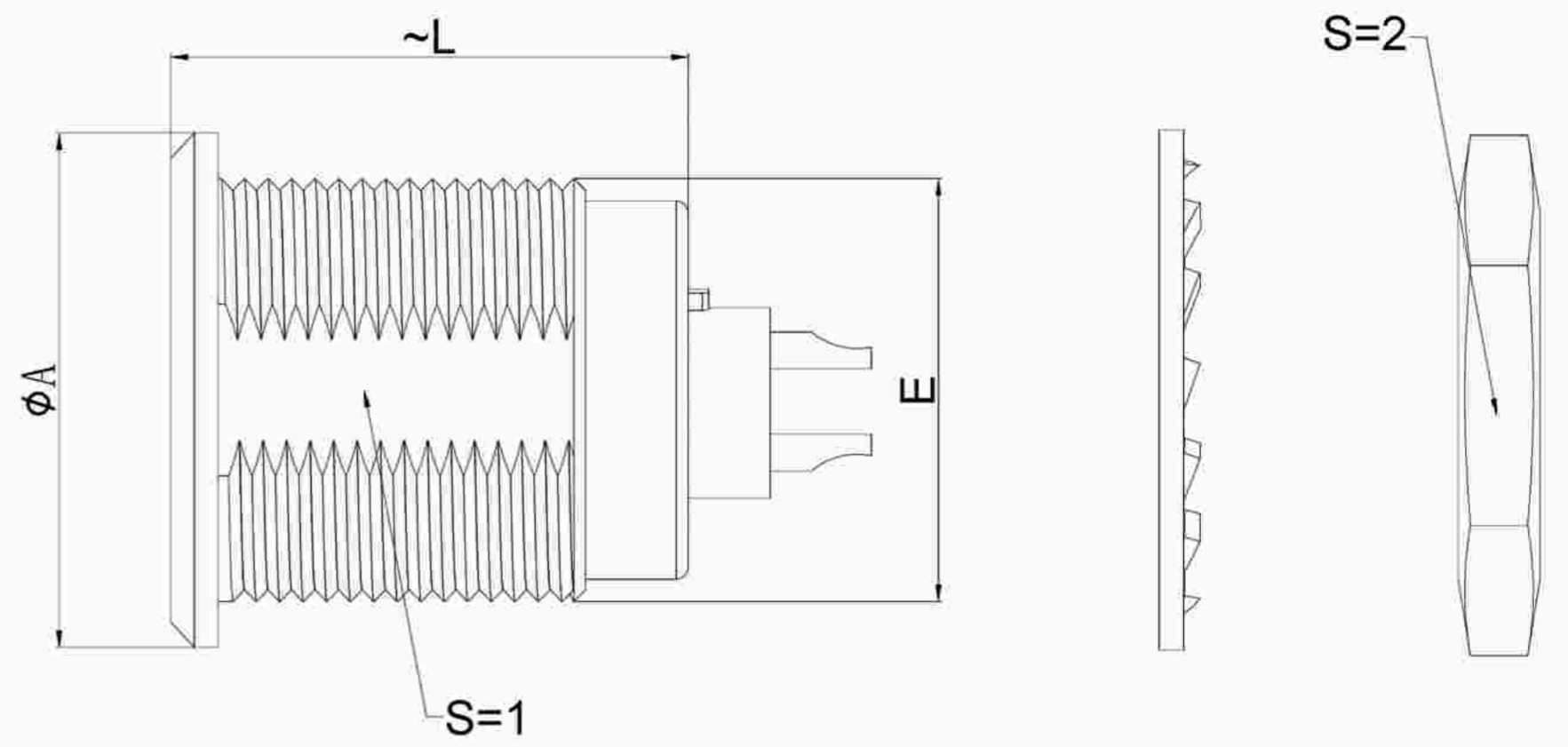


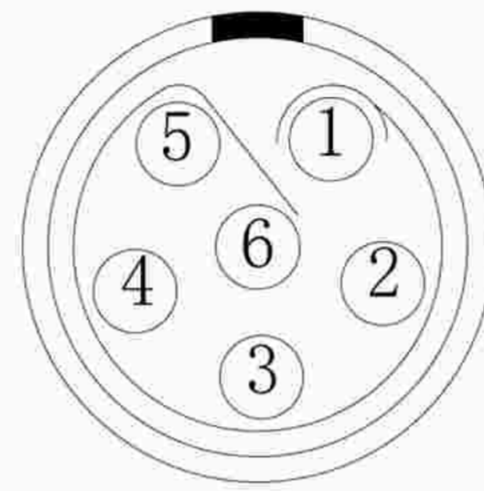
1.View and size(视图及尺寸)

| Main technical indicators(主要技术指标) | |
|-----------------------------------|---|
| 1.Mating (插拔次数) | 5000 |
| 2.Working Temperature (温度) | -55~+150 °C |
| 3.IP Rating (防护级别) | IP 50 |
| 4.Diameter of socket end(插合端直径) | φ1.3 |
| 5.Testing Voltage (测试电压) | 1350V |
| 6.Working Voltage (工作电压) | 1450V |
| 7.Rated Current (额定电流) | 12A |
| 8.Shell material(壳体材质) | Brass (chromium plating)/(nickel plating) fixation ring/ 黄铜 (镀铬)/(镀镍) 固定圈 |
| 9.Pin Material(插针材料) | Copper alloy gold plating(铜合金镀金) |
| 10.Insulator material(绝缘体材质) | L:PPS P:PEEK |

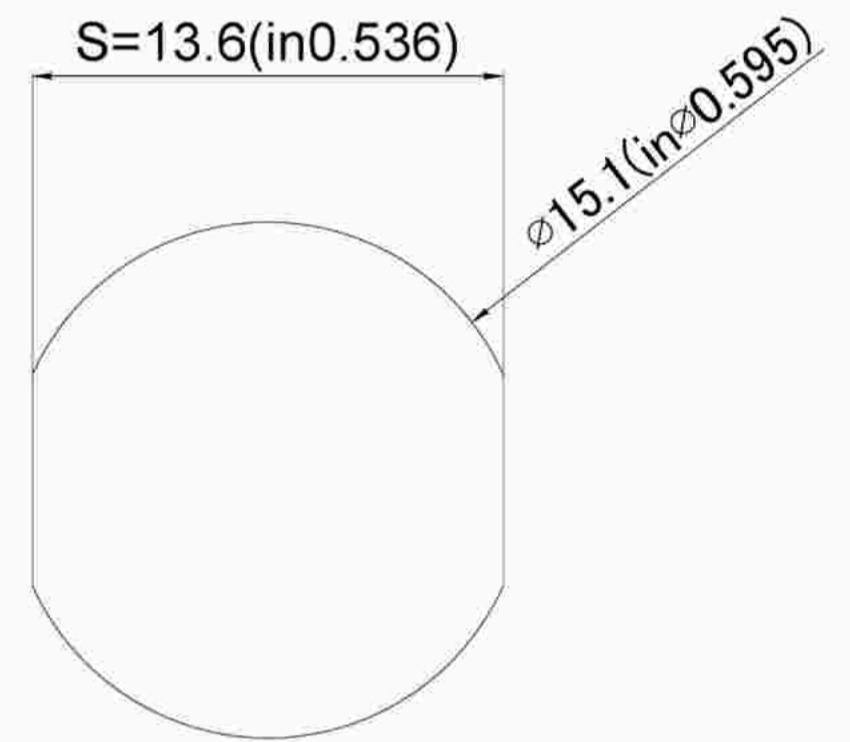


| | A | L | E | S1 | S2 |
|----|------|------|-------|------|------|
| MM | φ18 | 18.5 | M15*1 | 13.5 | 17 |
| in | 0.71 | 0.73 | | 0.53 | 0.67 |

| Sum up(总结) | |
|-----------------------------|--|
| Series(系列) | B |
| Shell style/model (外壳样式/型号) | ZGG:With a nut (post-fixed)带有一个螺母(后固定) |
| Button (按键) | A button(一个按键) |
| Termination type (终止类型) | Mother solder tin(母焊锡) |
| Line diameter awg(线材直径) | 28-20AWG |
| Cable diameterφ (电缆直径) | φ1.4-9.9MM |
| Match plug(匹配插头) | TGG.2B.P06.CXAD52H |

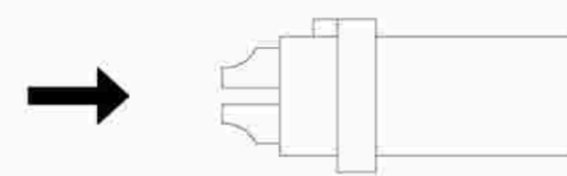


Welded surface (焊接面)

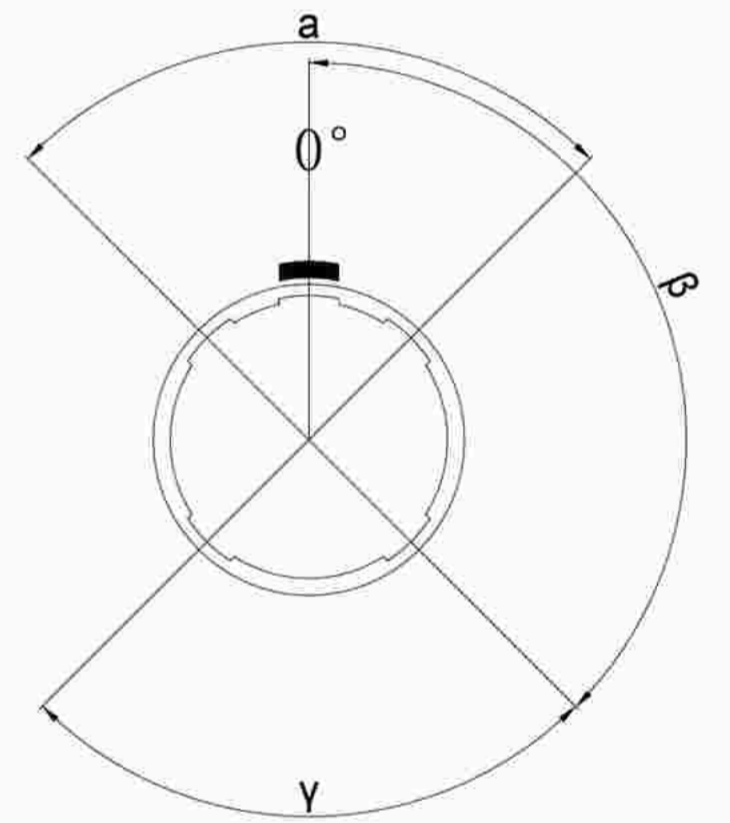


Pane hole size (面板开孔尺寸)

| Location pin combination(定位销组合) | | | |
|---------------------------------|-----------------------------------|-----------|-------------------------|
| (编号) Number | Number of positioning pins(定位销数量) | Angle(角度) | Series(系列)--2B |
| G | One(1) | | (Zero degrees)0° |
| A | Two(2) | A | Thirty degrees(30°) |
| B | Two(2) | | Forty-five degrees(45°) |
| C | Two(2) | | Sixty degrees(60°) |
| D | Two(2) | γ | 95 degrees (95°) |
| E | Two(2) | β | 120 degrees(120°) |
| F | Two(2) | | 145 degrees(145°) |
| J | Two(2) | A | 37.5degrees(37.5°) |
| K | Two(2) | | 52.5degrees(52.5°) |
| L | Two(2) | γ | Seventy degrees(70°) |



(Welded mother adhesive core) 焊接型母胶芯



Positive view of the socket (插座正视图)

| | A | B | C√ | ANGLE | |
|--------|--------|--------|--------|---------|-------|
| 5-10 | ±0.02 | ±0.05 | ±0.1 | 0°-30° | ±0.1° |
| 50-100 | ±0.1 | ±0.15 | ±0.2 | 61°-90° | ±0.5° |
| 50-100 | ±0.15 | ±0.2 | ±0.25 | | |
| 100- | ±0.15% | ±0.20% | ±0.25% | | |

ZG G.2B.P06.C X L



DESIGNED(设计) 广东星坤科技股份有限公司
 CHECKED(校对)
 APPROVED(审核) 日期
 效 REVISIONS
 文件工程章
 www.helloxkb.com www.helloxkb.cn

DATE(日期) SCALE(比额) N/A(不适用)
 DATE(日期) VIEW(视图)
 DATE(日期) UNIT(单位) MM
 MATERIAL (材料)
 XKB INDUSTRIAL PRECISION CO.,LIMITED

MODEL TYPE
 型号类型: ZGG.2B.P06.CXL
 PART NO. 2B6 core socket
 名称: 2B6芯插座
 DWG NO.:
 WEIGHT(重量) SHEET(表) REVISION(修订)
 1/1 A0