

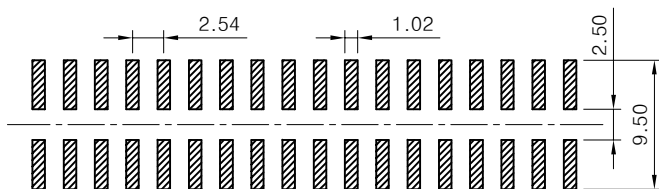
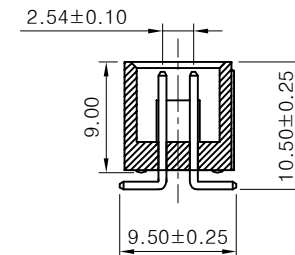
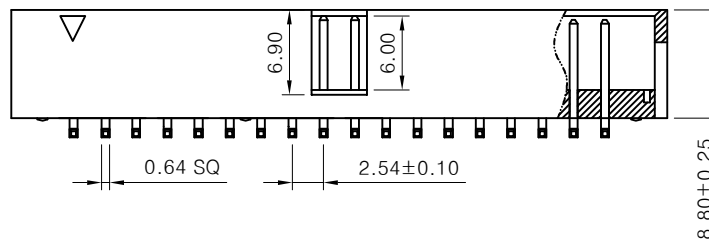
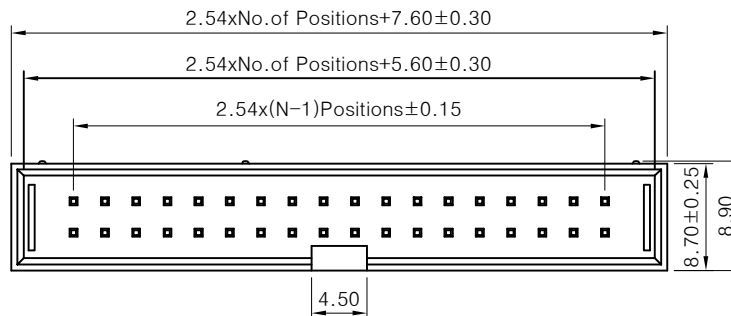


SPECIFICATIONS

Rated Current:3.0AMP
 Contact Resistance:20mΩ Max
 Withstand Voltage:1000V AC/DC
 Insulation Resistance:1000MΩ Min
 Operation Temperature:-40°C to +105°C

Contact Material:Brass
 Contact Plating:Au Over Ni
 Insulator Material:Polyester(UL94V-0) PA6T Black
 Max.Processing Temp: 230°C for 30-60 seconds
 (260°C for 10 seconds)

SQ PIN:0.64x12.8mm



Recommended P.C.B Layout(Top Side)
 (PCB BOARD TOLERANCE±0.05)

				OPERATION		DRAW		SCALE	FIT	深圳市连盛精密连接器有限公司	
				X.X	±0.30			UNIT	mm		
						CHECK		SIZE	A4	PART NO.	
A0	2014.04.16	NEW DRAWING						SHEET	1/1	BH-00019	
REV	DATE	MODIFICATION DESCRIPTION		CHANGE		APPROVE		PROJ.		TITLE:	2.54BOX 20P SMT=9.5 总高10.50
1	2	3	4	5	6	7	8	9			