

## Ultra Low Capacitance ESD Protection Diodes Array

### DESCRIPTION

SLSR05LC provides a typical line to line capacitance of 0.6pF and low insertion loss up to 3GHz providing greater signal integrity making it ideally suited for USB 2.0 applications, such as Digital TVs, DVD players, Computing, set-top boxes and MDDI applications in mobile computing devices.

This device has been specifically designed to protect sensitive components which are connected to high-speed data and transmission lines from overvoltage caused by ESD (electrostatic discharge), CDE (Cable Discharge Events), and EFT (electrical fast transients).

### APPLICATIONS

- ✧ xDSL
- ✧ USB 1.1/2.0/OTG
- ✧ IEEE 1394 Firewire Ports
- ✧ Notebooks & Handhelds
- ✧ Projection TV & Monitors
- ✧ Set-top box
- ✧ Flat Panel Displays

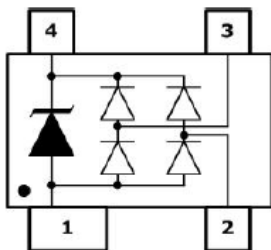
### FEATURES

- ✧ Protects two I/O lines and one Vcc line
- ✧ Low capacitance
- ✧ Low leakage current
- ✧ No insertion to 3.0 GHz
- ✧ 5V operating voltage
- ✧ Response time < 1ns
- ✧ Solid-state silicon avalanche technology
- ✧ Device meets MSL 1 requirements
- ✧ RoHS compliant

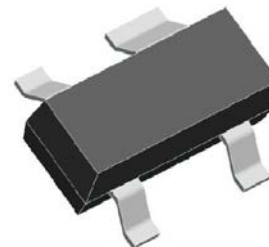
### MACHANICAL DATA

- ✧ SOT-143 package
- ✧ Flammability Rating: UL 94V-0
- ✧ Terminal: Matte tin plated.
- ✧ Packaging: Tape and Reel
- ✧ High temperature soldering guaranteed: 260°C/10s
- ✧ Reel size: 7 inch
- ✧ Quantity per reel: 3,000pcs

### PIN CONFIGURATION



### PACKAGE OUTLINE

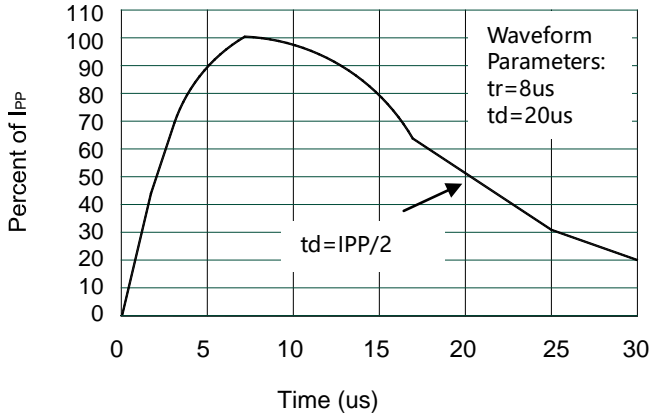


ABSOLUTE MAXIMUM RATING			
Symbol	Parameter	Value	Units
P <sub>PP</sub>	Peak Pulse Power (8/20μs)	125	W
I <sub>PP</sub>	Peak Pulse Current (8/20μs)	5	A
V <sub>ESD</sub>	ESD per IEC 61000-4-2 (Air) ESD per IEC 61000-4-2 (Contact)	±15 ±8	kV
T <sub>OPT</sub>	Operating Temperature	-55/+150	°C
T <sub>STG</sub>	Storage Temperature	-55/+150	°C

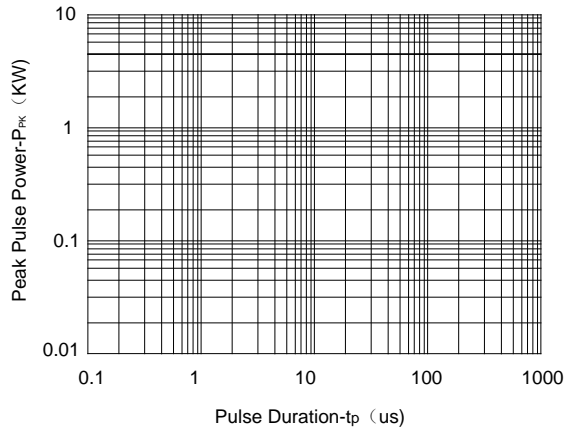
ELECTRICAL CHARACTERISTICS (T <sub>amb</sub> =25°C)						
Symbol	Parameter	Test Condition	Min	Typ	Max	Units
V <sub>RWM</sub>	Reverse Working Voltage	Any I/O pin to GND			5.0	V
V <sub>BR</sub>	Reverse Breakdown Voltage	I <sub>T</sub> = 1mA Any I/O pin to GND	6.0			V
I <sub>R</sub>	Reverse Leakage Current	V <sub>RWM</sub> = 5V Any I/O pin to GND			1	μA
V <sub>F</sub>	Diode Forward Voltage	I <sub>F</sub> = 15mA		0.85	1.2	V
V <sub>C1</sub>	Clamping Voltage 1	I <sub>PP</sub> = 1A, t <sub>p</sub> = 8/20μs Any I/O pin to GND			15.5	V
V <sub>C2</sub>	Clamping Voltage 2	I <sub>PP</sub> = 5, t <sub>p</sub> = 8/20μs Any I/O pin to GND			25	V
I <sub>PP</sub>	Peak Pulse Current	t <sub>p</sub> = 8/20μs Any I/O pin to GND			5	A
C <sub>J1</sub>	Junction Capacitance 1	V <sub>R</sub> = 0V, f = 1MHz Between I/O pins		0.45	0.6	pF
C <sub>J2</sub>	Junction Capacitance 2	V <sub>R</sub> = 0V, f = 1MHz Any I/O pin to GND		0.9	1.2	pF

Note: I/O pins are pin2,3.

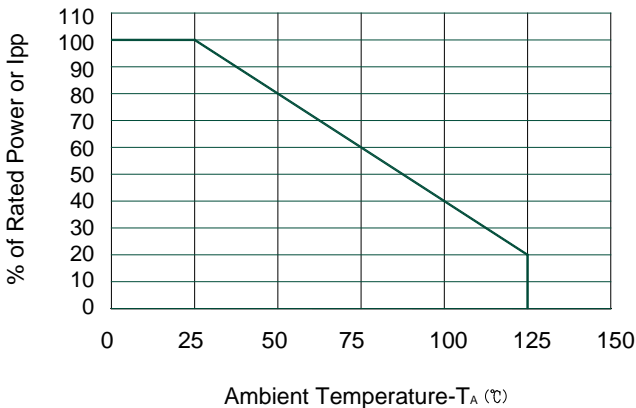
**ELECTRICAL CHARACTERISTICS CURVE**



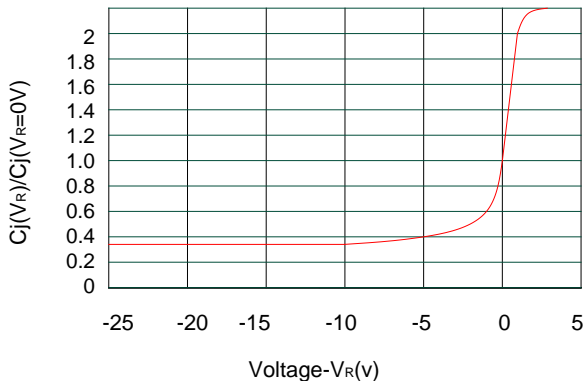
**Pulse Waveform**



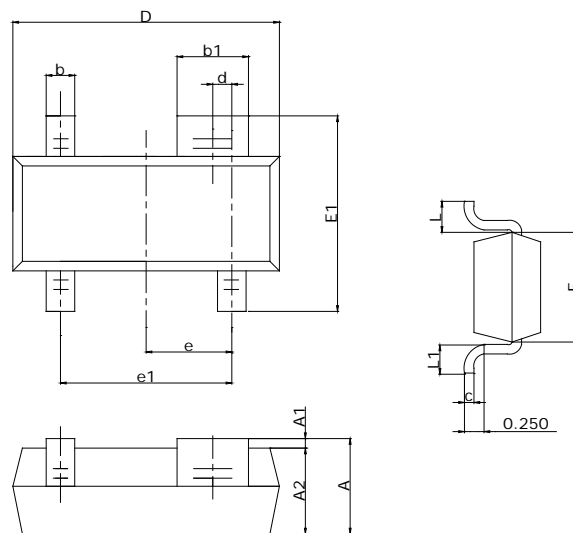
**Non-Repetitive Peak Pulse Power vs. Pulse Time**



**Power Derating Curve**



**Junction Capacitance vs. Reverse Voltage**

**SOT-143 PACKAGE OUTLINE DIMENSIONS**


Symbol	Dimensions In Millimeters		Dimensions In Inches	
	Min	Max	MIN	MAX
A	0.90	1.15	0.035	0.045
A1	0.00	0.10	0.000	0.004
A2	0.90	1.05	0.035	0.041
b	0.30	0.50	0.012	0.020
b1	0.75	0.90	0.030	0.035
c	0.08	0.15	0.003	0.006
D	2.80	3.00	0.110	0.118
d	0.20TYP		0.008TYP	
E	1.20	1.40	0.047	0.055
E1	2.25	2.55	0.089	0.10
e	0.95TYP		0.037TYP	
e1	1.80	2.00	0.071	0.079
L	0.55REF		0.022REF	
L1	0.30	0.50	0.012	0.020