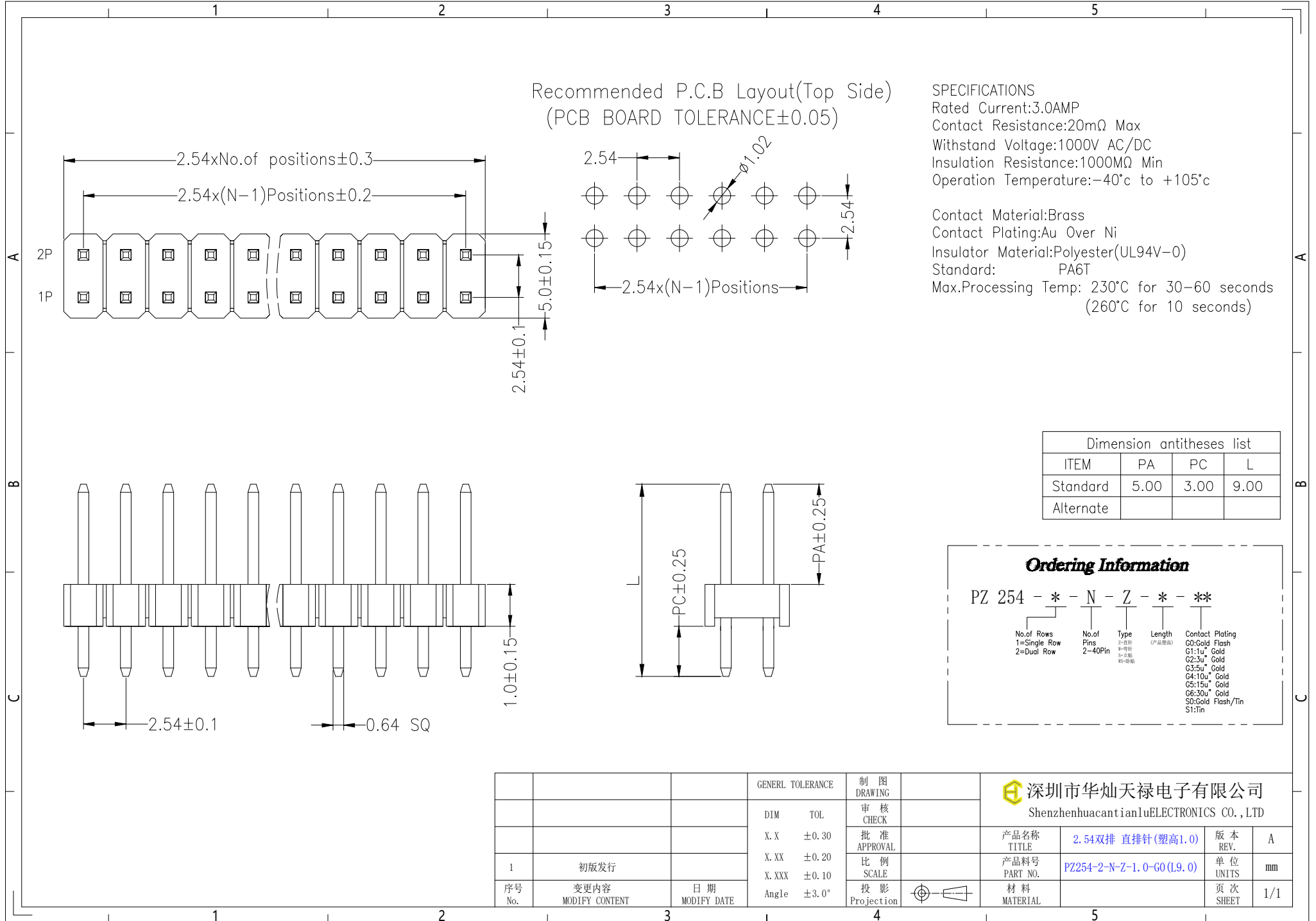


Recommended P.C.B Layout(Top Side)  
(PCB BOARD TOLERANCE±0.05)

SPECIFICATIONS

Rated Current:3.0AMP  
Contact Resistance:20mΩ Max  
Withstand Voltage:1000V AC/DC  
Insulation Resistance:1000MΩ Min  
Operation Temperature:-40°c to +105°c

Contact Material:Brass  
Contact Plating:Au Over Ni  
Insulator Material:Polyester(UL94V-0)  
Standard: PA6T  
Max.Processing Temp: 230°C for 30-60 seconds  
(260°C for 10 seconds)



Dimension antitheses list			
ITEM	PA	PC	L
Standard	5.00	3.00	9.00
Alternate			

**Ordering Information**

PZ 254 - \* - N - Z - \* - \*\*

No.of Rows 1=Single Row 2=Dual Row	No.of Pins 2-40Pin	Type Z-直插 W-弯插 S-贴片 W5-弯插	Length (产品长度)	Contact Plating C0:Gold Flash G1:1u" Gold G2:3u" Gold G3:5u" Gold G4:10u" Gold G5:15u" Gold G6:30u" Gold S0:Gold Flash/Tin S1:Tin
--	-----------------------	---------------------------------------	------------------	--

			GENREL TOLERANCE	制图 DRAWING	深圳市华灿天禄电子有限公司 ShenzhenhuacantianluELECTRONICS CO.,LTD			
			DIM TOL	审核 CHECK	产品名称 TITLE	2.54双排 直插针(塑高1.0)	版本 REV.	A
			X. X ±0.30	批准 APPROVAL	产品料号 PART NO.	PZ254-2-N-Z-1.0-60(L9.0)	单位 UNITS	mm
			X. XX ±0.20	比例 SCALE	材料 MATERIAL		页次 SHEET	1/1
			X. XXX ±0.10	投影 Projection				
			Angle ±3.0°					
序号 No.	变更内容 MODIFY CONTENT	日期 MODIFY DATE						