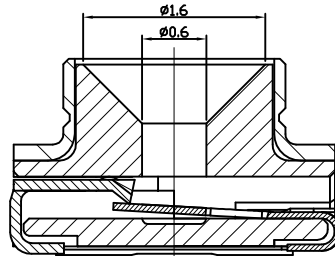
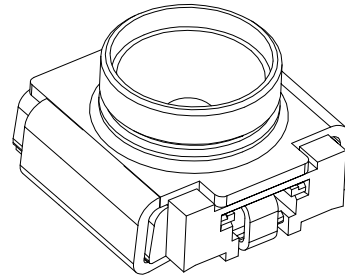
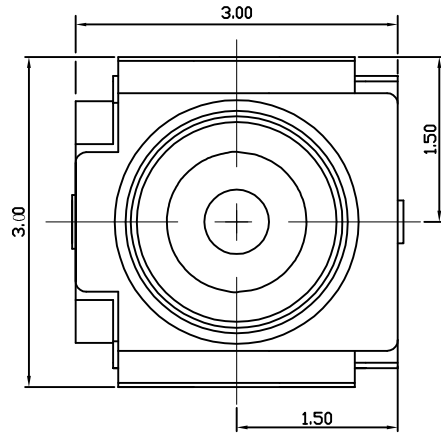
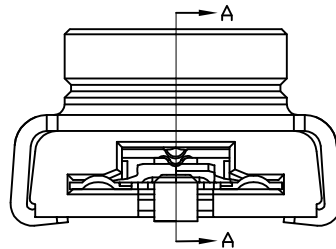
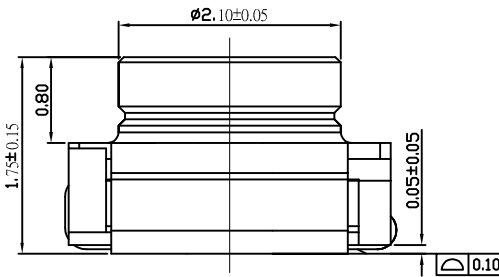


REV.	ECN. NO.	APPD.
A	BC-09-904578	Y.M.Her
B	BC-09-7036947	Alex
C	BC-11-0114276	Alex

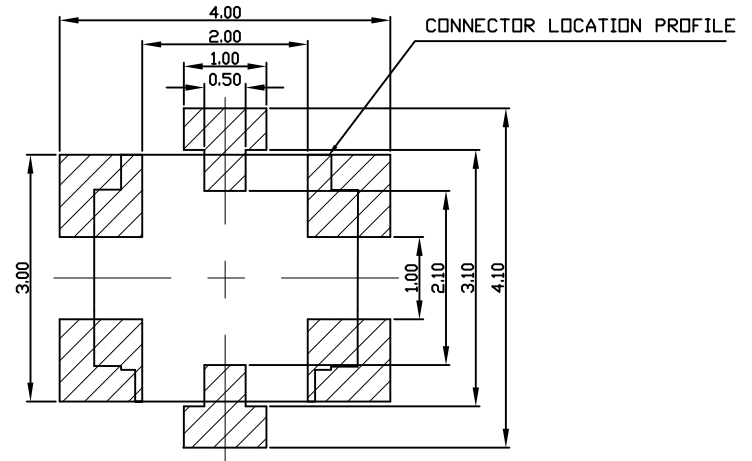


SECTION A-A

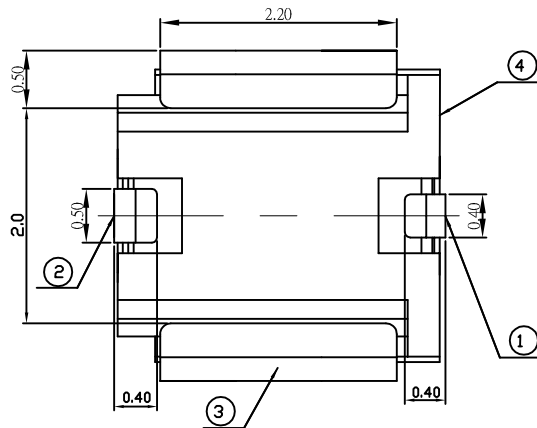


NOTES:

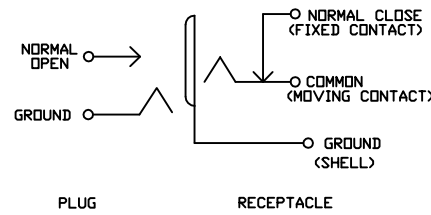
- ELECTRICAL CHARACTERISTICS:
 - RATED VOLTAGE: 36 V MAX.
 - RATED CURRENT: 0.5 A MAX.
 - INSULATION RESISTANCE: 500 MEGOHMS MIN.
 - DIELECTRIC WITHSTANDING VOLTAGE: 100 VAC MIN. FOR 1 MINUTE.
 - CONTACT RESISTANCE: 50 m-OHM MAX.
 - IMPEDANCE: 50 OHM NOMINAL.
 - VSWR D.C. TO 3 GHz : 1.2 MAX.
3 GHz TO 6 GHz : 1.3 MAX.
 - INSERTION LOSS D.C. TO 3 GHz : 0.1 dB MAX.
3 GHz TO 6 GHz : 0.2 dB MAX.
 - ISOLATION D.C. TO 3 GHz : 20 dB MIN.
3 GHz TO 6 GHz : 15 dB MIN.
- MECHANICAL CHARACTERISTICS:
 - DURABILITY: 500 CYCLES.
 - OPERATING TEMPERATURE: -40 TO 90 °C.
- DIMENSIONING SHALL BE INTERPRETED PER ASME Y14.5M 1994.
- HARMFUL MATERIAL CONTROL PLEASE FOLLOW DOC. NO. 'EPI12'.
- PLEASE CONTACT FOXCONN SALES REPRESENTATIVE TO VERIFY PRODUCT DETAILS & AVAILABILITY.



RECOMMENDED PCB LAYOUT



SWITCH CIRCUIT



4	INSULATOR	1	THERMOPLASTIC UL 94V-0	MOLDED COLOR: BLACK
3	SHELL	1	COPPER ALLOY	Au PLATING OVERALL
2	FIXED CONTACT	1	COPPER ALLOY	Au PLATING ON CONTACT AREA
1	MOVING CONTACT	1	COPPER ALLOY	AND SOLDER AREA.
ITEM	DESCRIPTION	Q'TY	MATERIAL	FINISH
X. ±	X*. ± 1*	UNITS	mm	NAME (INTENDED USE)
.X ± 0.20	.X* ±	MAT'L		RF TEST PORT
.XX ± 0.10	.XX* ±		/	PART NO. (INTENDED USE)
.XXX ±	.XXX* ±	FINISH		KMC1001-F007-7F
THESE DRAWINGS AND SPECIFICATIONS ARE THE PROPERTY OF HON HAI PRECISION IND. CO., LTD. AND SHALL NOT BE REPRODUCED COPIED OR USED IN ANY MANNER WITHOUT THE PRIOR WRITTEN CONSENT OF HON HAI PRECISION IND. CO., LTD.				APPD: Alex Wu
				CHKD: LIU WEIPING
				DR: LUCEN 10/13/11
				Q'TY
				NAME (INTENDED USE)
				RF TEST PORT
				PART NO. (INTENDED USE)
				KMC1001-F007-7F
				APPD: Alex Wu
				CHKD: LIU WEIPING
				DR: LUCEN 10/13/11
				Q'TY
				NAME (INTENDED USE)
				RF TEST PORT
				PART NO. (INTENDED USE)
				KMC1001-F007-7F
				APPD: Alex Wu
				CHKD: LIU WEIPING
				DR: LUCEN 10/13/11
				Q'TY
				NAME (INTENDED USE)
				RF TEST PORT
				PART NO. (INTENDED USE)
				KMC1001-F007-7F
				APPD: Alex Wu
				CHKD: LIU WEIPING
				DR: LUCEN 10/13/11
				Q'TY
				NAME (INTENDED USE)
				RF TEST PORT
				PART NO. (INTENDED USE)
				KMC1001-F007-7F
				APPD: Alex Wu
				CHKD: LIU WEIPING
				DR: LUCEN 10/13/11
				Q'TY
				NAME (INTENDED USE)
				RF TEST PORT
				PART NO. (INTENDED USE)
				KMC1001-F007-7F
				APPD: Alex Wu
				CHKD: LIU WEIPING
				DR: LUCEN 10/13/11
				Q'TY
				NAME (INTENDED USE)
				RF TEST PORT
				PART NO. (INTENDED USE)
				KMC1001-F007-7F
				APPD: Alex Wu
				CHKD: LIU WEIPING
				DR: LUCEN 10/13/11
				Q'TY
				NAME (INTENDED USE)
				RF TEST PORT
				PART NO. (INTENDED USE)
				KMC1001-F007-7F
				APPD: Alex Wu
				CHKD: LIU WEIPING
				DR: LUCEN 10/13/11
				Q'TY
				NAME (INTENDED USE)
				RF TEST PORT
				PART NO. (INTENDED USE)
				KMC1001-F007-7F
				APPD: Alex Wu
				CHKD: LIU WEIPING
				DR: LUCEN 10/13/11
				Q'TY
				NAME (INTENDED USE)
				RF TEST PORT
				PART NO. (INTENDED USE)
				KMC1001-F007-7F
				APPD: Alex Wu
				CHKD: LIU WEIPING
				DR: LUCEN 10/13/11
				Q'TY
				NAME (INTENDED USE)
				RF TEST PORT
				PART NO. (INTENDED USE)
				KMC1001-F007-7F
				APPD: Alex Wu
				CHKD: LIU WEIPING
				DR: LUCEN 10/13/11
				Q'TY
				NAME (INTENDED USE)
				RF TEST PORT
				PART NO. (INTENDED USE)
				KMC1001-F007-7F
				APPD: Alex Wu
				CHKD: LIU WEIPING
				DR: LUCEN 10/13/11
				Q'TY
				NAME (INTENDED USE)
				RF TEST PORT
				PART NO. (INTENDED USE)
				KMC1001-F007-7F
				APPD: Alex Wu
				CHKD: LIU WEIPING
				DR: LUCEN 10/13/11
				Q'TY
				NAME (INTENDED USE)
				RF TEST PORT
				PART NO. (INTENDED USE)
				KMC1001-F007-7F
				APPD: Alex Wu
				CHKD: LIU WEIPING
				DR: LUCEN 10/13/11
				Q'TY
				NAME (INTENDED USE)
				RF TEST PORT
				PART NO. (INTENDED USE)
				KMC1001-F007-7F
				APPD: Alex Wu
				CHKD: LIU WEIPING
				DR: LUCEN 10/13/11
				Q'TY
				NAME (INTENDED USE)
				RF TEST PORT
				PART NO. (INTENDED USE)
				KMC1001-F007-7F
				APPD: Alex Wu
				CHKD: LIU WEIPING
				DR: LUCEN 10/13/11
				Q'TY
				NAME (INTENDED USE)
				RF TEST PORT
				PART NO. (INTENDED USE)
				KMC1001-F007-7F
				APPD: Alex Wu
				CHKD: LIU WEIPING
				DR: LUCEN 10/13/11
				Q'TY
				NAME (INTENDED USE)
				RF TEST PORT
				PART NO. (INTENDED USE)
				KMC1001-F007-7F
				APPD: Alex Wu
				CHKD: LIU WEIPING
				DR: LUCEN 10/13/11
				Q'TY
				NAME (INTENDED USE)
				RF TEST PORT
				PART NO. (INTENDED USE)
				KMC1001-F007-7F
				APPD: Alex Wu
				CHKD: LIU WEIPING
				DR: LUCEN 10/13/11
				Q'TY
				NAME (INTENDED USE)
				RF TEST PORT
				PART NO. (INTENDED USE)
				KMC1001-F007-7F
				APPD: Alex Wu
				CHKD: LIU WEIPING
				DR: LUCEN 10/13/11
				Q'TY
				NAME (INTENDED USE)
				RF TEST PORT
				PART NO. (INTENDED USE)
				KMC1001-F007-7F
				APPD: Alex Wu
				CHKD: LIU WEIPING
				DR: LUCEN 10/13/11
				Q'TY
				NAME (INTENDED USE)
				RF TEST PORT
				PART NO. (INTENDED USE)
				KMC1001-F007-7F
				APPD: Alex Wu
				CHKD: LIU WEIPING
				DR: LUCEN 10/13/11
				Q'TY
				NAME (INTENDED USE)
				RF TEST PORT
				PART NO. (INTENDED USE)
				KMC1001-F007-7F
				APPD: Alex Wu
				CHKD: LIU WEIPING
				DR: LUCEN 10/13/11
				Q'TY
				NAME (INTENDED USE)
				RF TEST PORT
				PART NO. (INTENDED USE)
				KMC1001-F007-7F
				APPD: Alex Wu
				CHKD: LIU WEIPING
				DR: LUCEN 10/13/11
				Q'TY
				NAME (INTENDED USE)
				RF TEST PORT
				PART NO. (INTENDED USE)
				KMC1001-F007-7F
				APPD: Alex Wu
				CHKD: LIU WEIPING
				DR: LUCEN 10/13/11
				Q'TY
				NAME (INTENDED USE)
				RF TEST PORT
				PART NO. (INTENDED USE)
				KMC1001-F007-7F
				APPD: Alex Wu
				CHKD: LIU WEIPING
				DR: LUCEN 10/13/11
				Q'TY
				NAME (INTENDED USE)
				RF TEST PORT
				PART NO. (INTENDED USE)
				KMC1001-F007-7F
				APPD: Alex Wu
				CHKD: LIU WEIPING
				DR: LUCEN 10/13/11
				Q'TY
				NAME (INTENDED USE)
				RF TEST PORT
				PART NO. (INTENDED USE)
				KMC1001-F007-7F
				APPD: Alex Wu
				CHKD: LIU WEIPING
				DR: LUCEN 10/13/11
				Q'TY
				NAME (INTENDED USE)
				RF TEST PORT
				PART NO. (INTENDED USE)
				KMC1001-F007-7F
				APPD: Alex Wu
				CHKD: LIU WEIPING
				DR: LUCEN 10/13/11
				Q'TY
				NAME (INTENDED USE)
				RF TEST PORT
				PART NO. (INTENDED USE)
				KMC1001-F007-7F
				APPD: Alex Wu
				CHKD: LIU WEIPING
				DR: LUCEN 10/13/11
				Q'TY
				NAME (INTENDED USE)
				RF TEST PORT
				PART NO. (INTENDED USE)
				KMC1001-F007-7F
				APPD: Alex Wu
				CHKD: LIU WEIPING
				DR: LUCEN 10/13/11
				Q'TY
				NAME (INTENDED USE)
				RF TEST PORT
				PART NO. (INTENDED USE)
				KMC1001-F007-7F
				APPD: Alex Wu
				CHKD: LIU WEIPING
				DR: LUCEN 10/13/11
				Q'TY
				NAME (INTENDED USE)
				RF TEST PORT
				PART NO. (INTENDED USE)
				KMC1001-F007-7F
				APPD: Alex Wu
				CHKD: LIU WEIPING
				DR: LUCEN 10/13/11
				Q'TY
				NAME (INTENDED USE)
				RF TEST PORT
				PART NO. (INTENDED USE)
				KMC1001-F007-7F
				APPD: Alex Wu
				CHKD: LIU WEIPING
				DR: LUCEN 10/13/11
				Q'TY
				NAME (INTENDED USE)
				RF TEST PORT
				PART NO. (INTENDED USE)
				KMC1001-F007-7F
				APPD: Alex Wu
				CHKD: LIU WEIPING
				DR: LUCEN 10/13/11
				Q'TY
				NAME (INTENDED USE)
				RF TEST PORT
				PART NO. (INTENDED USE)
				KMC1001-F007-7F
				APPD: Alex Wu
				CHKD: LIU WEIPING
				DR: LUCEN 10/13/11
				Q'TY
				NAME (INTENDED USE)
				RF TEST PORT
				PART NO. (INTENDED USE)
				KMC1001-F007-7F
				APPD: Alex Wu
				CHKD: LIU WEIPING
				DR: LUCEN 10/13/11
				Q'TY
				NAME (INTENDED USE)
				RF TEST PORT
				PART NO. (INTENDED USE)
				KMC1001-F007-7F
				APPD: Alex Wu
				CHKD: LIU WEIPING
				DR: LUCEN 10/13/11
				Q'TY
				NAME (INTENDED USE)
				RF TEST PORT
				PART NO. (INTENDED USE)
				KMC1001-F007-7F
				APPD: Alex Wu
				CHKD: LIU WEIPING
				DR: LUCEN 10/13/11
				Q'TY
				NAME (INTENDED USE)
				RF TEST PORT
				PART NO. (INTENDED USE)
				KMC1001-F007-7F
				APPD: Alex Wu
				CHKD: LIU WEIPING
				DR: LUCEN 10/13/11
				Q'TY
				NAME (INTENDED USE)
				RF TEST PORT
				PART NO. (INTENDED USE)
				KMC1001-F007-7F
				APPD: Alex Wu
				CHKD: LIU WEIPING
				DR: LUCEN 10/13/11
				Q'TY
				NAME (INTENDED USE)
				RF TEST PORT
				PART NO. (INTENDED USE)
				KMC1001-F007-7F
				APPD: Alex Wu
				CHKD: LIU WEIPING
				DR: LUCEN 10/13/11
				Q'TY
				NAME (INTENDED USE)
				RF TEST PORT
				PART NO. (INTENDED USE)
				KMC1001-F007-7F
				APPD: Alex Wu
				CHKD: LIU WEIPING
				DR: LUCEN 10/13/11
				Q'TY
				NAME (INTENDED USE)
				RF TEST PORT
				PART NO. (INTENDED USE)
				KMC1001-F007-7F
				APPD: Alex Wu
				CHKD: LIU WEIPING
				DR: LUCEN 10/13/11
				Q'TY
				NAME (INTENDED USE)
				RF TEST PORT
				PART NO. (INTENDED USE)
				KMC1001-F007-7F
				APPD: Alex Wu
				CHKD: LIU WEIPING
				DR: LUCEN 10/13/11
				Q'TY
				NAME (INTENDED USE)
				RF TEST PORT
				PART NO. (INTENDED USE)
				KMC1001-F007-7F
				APPD: Alex Wu
				CHKD: LIU WEIPING
				DR: LUCEN 10/13/11