

NOTES:
 Current Rating: 2.0AMP
 Contact Resistance: 20mΩ Max
 Withstand Voltage: 1000V AC/DC
 Insulation Resistance: 1000MΩ Min
 Operation Temperature: -40°C to +105°C

Contact Material: Brass
 Contact plating: Au Or Sn over Ni
 Insulator Material: LCP+30%G.F UL94V-0

PART NO.

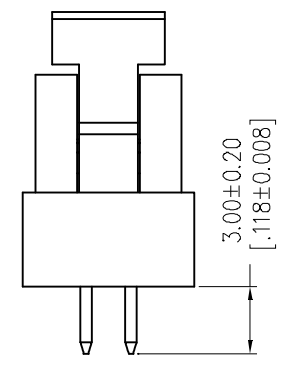
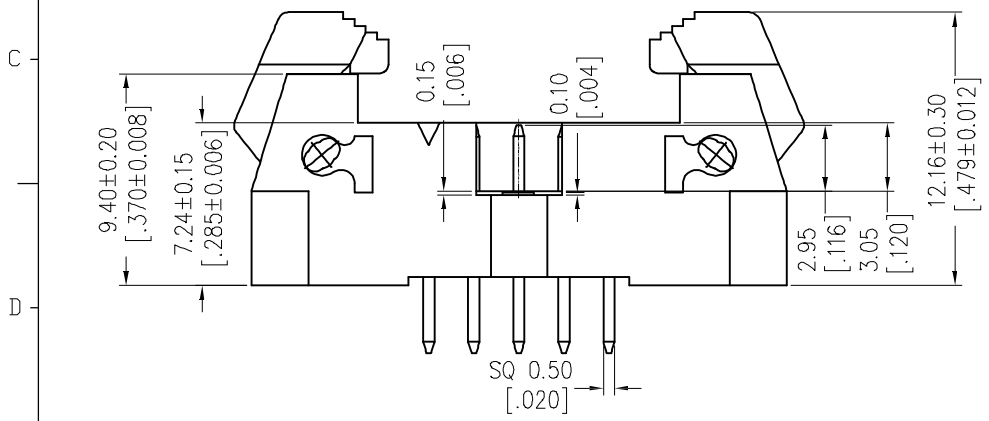
Z-S973221 ** S * * S * 1

No. of Pins
 06P, 08P, 10P, 14P,
 16P, 20P, 24P, 26P,
 30P, 34P, 40P, 44P,
 50P, 60P, 64P,
 Packing
 A=Tray
 T=Tube

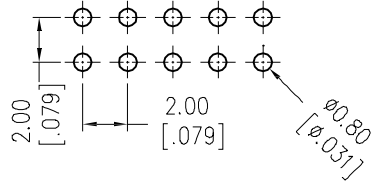
PLATING

0=TIN
 1=GOLD FLASH
 2=GOLD 10U"
 3=GOLD 15U"
 4=GOLD 30U"
 A=GOLD FLASH/TIN
 B=GOLD 10U"/TIN
 C=GOLD 15U"/TIN
 D=GOLD 30U"/TIN

Insulator Color
 B=Black
 U=Blue
 G=Grey(427C)
 E=Grey(413C)



Recommended P.C.B Layout(Top Side)
 (PCB BOARD TOLERANCE±0.05)



UNITS <input checked="" type="checkbox"/> mm <input type="checkbox"/> INCH		NAME: 2.00 Ejector HEADER "S" Type 180°		 NEXTRONICS ENGINEERING CORP.	
GENERAL TOLERANCES: (UNLESS SPECIFIED)		PART NO: Z-S973221**S**S*1		TITLE: CUSTOMER DWG	
	mm	INCH	APPD:		DWG NO: ****
4 PLACE	± **.00	± **.00	CHKD:		C
3 PLACE	± 0.15	± **.00	DRAWN:		
2 PLACE	± 0.25	± **.00	SCALE: SHEET: REV.:		
1 PLACE	± 0.40	± **.00	4 / 1 1 / 1 A		
ANGULAR:	X°± 3°	X°± **.00			

A	NEW RELEASED	8/21'14	
REV.	DESCRIPTION	DATE	APPD