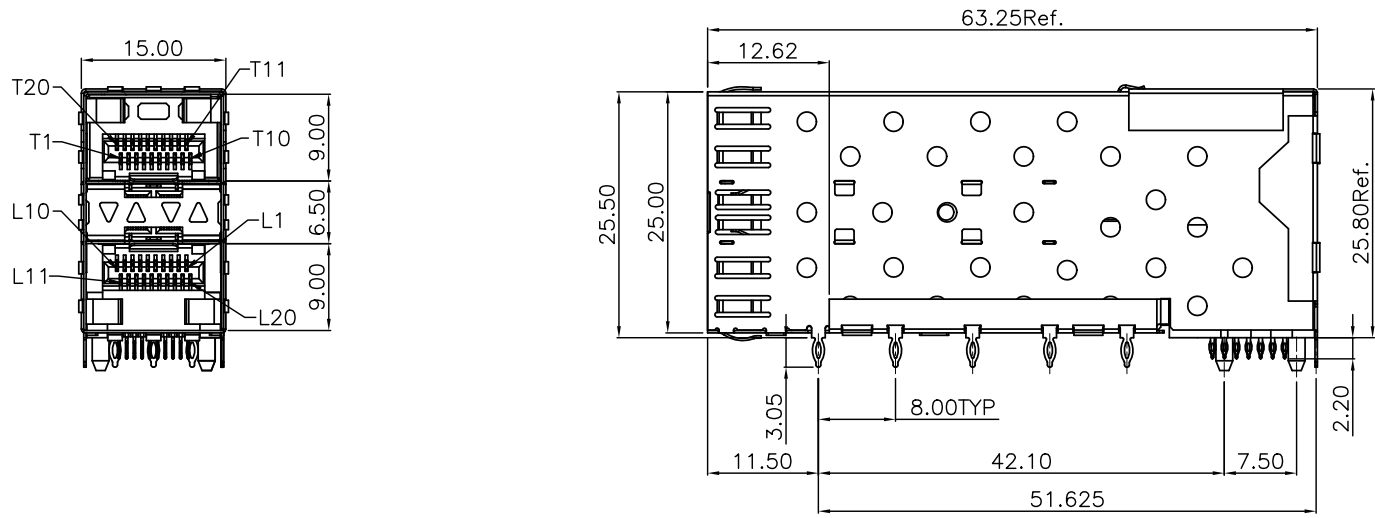


8 7 6 5 4 3 2 1

| NO. | ECN NO. | DESCRIPTION | REV. | DRAW | DATE |
|-----|---------|-------------|------|------|------|
| | | | | | |
| | | | | | |



46019-XXXXX1
 M32:Ni50u",Au15u",Matte Sn150u"

NOTES:
 1.MATERIAL:
 CAGE:COPPER ALLOY,THICKNESS:0.25mm;
 CONNECTOR HOUSING:GLASS FILLED THERMOPLASTIC,UL 94V-0
 COLOR:BLACK
 TERMINALS:PHOSPHOR BRONZE
 2.FINISH
 TERMINALS CONTACT AREA:PLATED-GOLD;
 SOLDER TERMINAL AREA:PLATED-TIN.

| | | | | | | | | |
|------------------------|-------|-------------|-----|------------------------------|--|-----|----------------|---|
| 未注公差 容许公差 TOLERANCE | | | | GLGNET ® 深圳方向电子股份有限公司 | | | | |
| .X | ±0.35 | X.° | ±3° | | | | | |
| .XX | ±0.25 | .X° | ±2° | 设计 DESIGN | | 陈宝华 | 品名 TITLE | 2x1 SFP-04 WITH INNER/OUTER LIGHT PIPE |
| .XXX | ±0.15 | .XX° | ±1° | 校对 CHECKED | | 郑先军 | 料号 ITEM NO. | 46019-11M321 |
| 比例 SCALE | 1:1 | 角法 PROJ. | | 核准 APPROVE | | 邱秀嵘 | 图号 DWG NO. | GLG-WS-051 |
| 张数 SHEET | 1/4 | 纸张 SIZE | A4 | 单位 UNIT | | mm | 版本 REV. | B4 |

8 7 6 5 4 3 2 1

8

7

6

5

4

3

2

1

| NO. | ECN NO. | DESCRIPTION | REV. | DRAW | DATE |
|-----|---------|-------------|------|------|------|
| | | | | | |
| | | | | | |
| | | | | | |

D

D

C

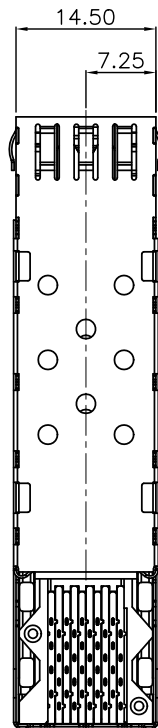
C

B

B

A

A



未注公差
容许公差 TOLERANCE
.X ±0.35 X.° ±3°
.XX ±0.25 .X° ±2°
.XXX ±0.15 .XX° ±1°

GLGNET® 深圳方向电子股份有限公司

| | | | | | | | |
|-------------|-----|-------------|----|---------------|-----|----------------|--|
| 比例 SCALE | 1:1 | 角法 PROJ. | | 设计 DESIGN | 陈宝华 | 品名 TITLE | 2x1 SFP-04 WITH INNER/OUTER LIGHT PIPE |
| 张数 SHEET | 2/4 | 纸张 SIZE | A4 | 校对 CHECKED | 郑先军 | 料号 ITEM NO. | 46019-11M321 |
| 单位 UNIT | mm | 版本 REV. | B4 | 核准 APPROVE | 邱秀嵘 | 图号 DWG NO. | GLG-WS-051 |

8

7

6

5

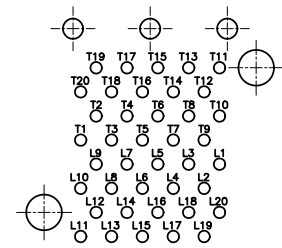
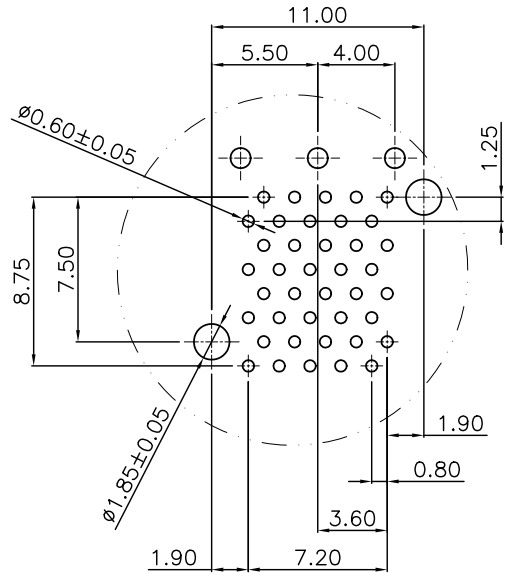
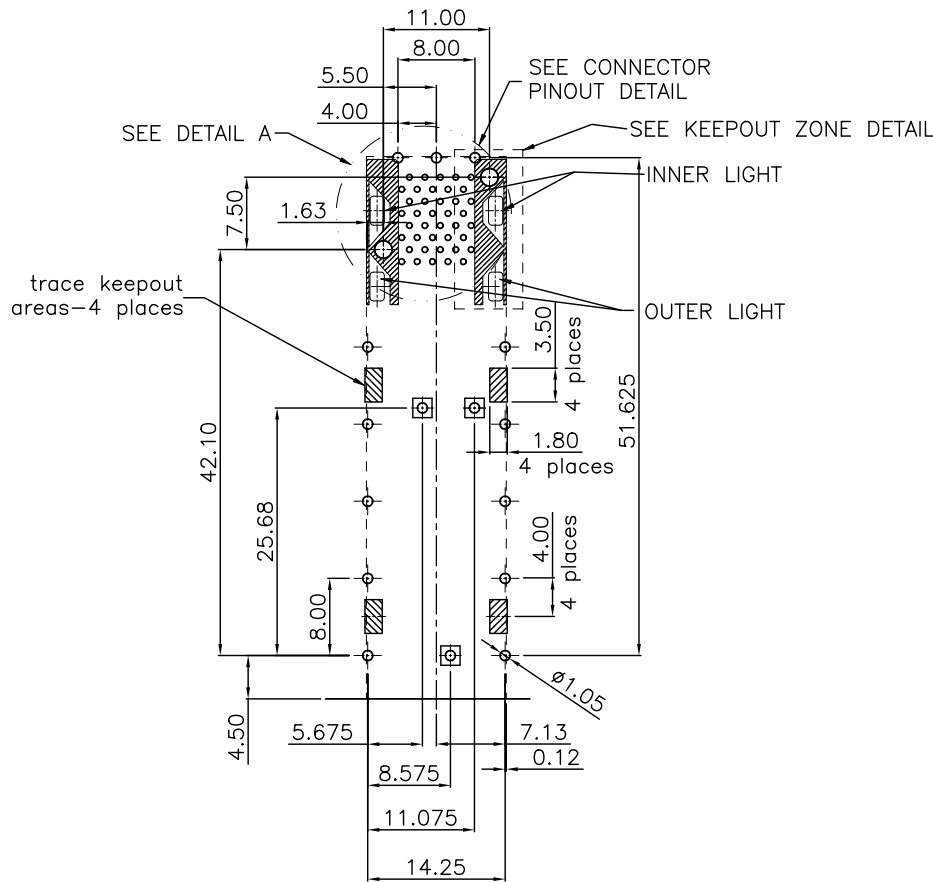
4

3

2

1

| NO. | ECN NO. | DESCRIPTION | REV. | DRAW | DATE |
|-----|---------|-------------|------|------|------|
| | | | | | |
| | | | | | |



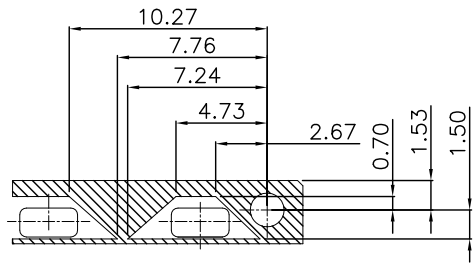
CONNETTON PINOUT DETAIL
COMPONENT SIDE OF BOARD

EDGE OF BOARD
RECOMMENDED PCB LAOUT (COMPONENT SIDE)
PCB TOLERANCE: ± 0.05

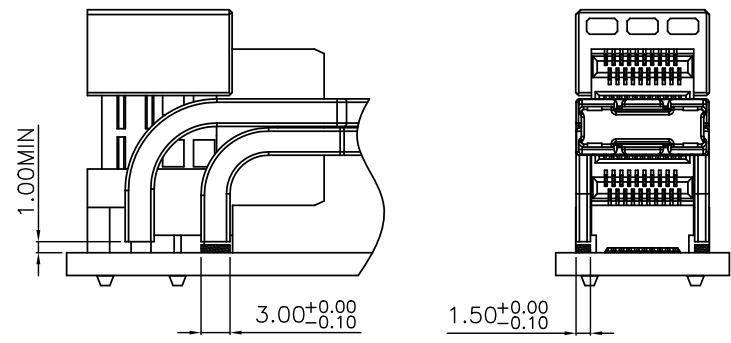
- RECOMMENDED PCB THICKNESS: 2.36 (MINIMUM PCB THICKNESS: 1.57)
- 考虑客户使用兼容性器件, 回处孔位, 建议PCB LAYOUT图有设计, 但我司此规格器件处无对应引脚.

| | | | | | | | |
|--|-----|-------------|----|------------------------------|-----|----------------|--------------|
| 未注公差 容许公差 TOLERANCE .X ± 0.35 X.° $\pm 3^\circ$.XX ± 0.25 .X.° $\pm 2^\circ$.XXX ± 0.15 .XX° $\pm 1^\circ$ | | | | GLGNET ® 深圳方向电子股份有限公司 | | | |
| 比例 SCALE | 1:1 | 角法 PROJ. | | | | | |
| 张数 SHEET | 3/4 | 纸张 SIZE | A4 | 校对 CHECKED | 郑先军 | 料号 ITEM NO. | 46019-11M321 |
| 单位 UNIT | mm | 版本 REV. | B4 | 核准 APPROVE | 邱秀嵘 | 图号 DWG NO. | GLG-WS-051 |

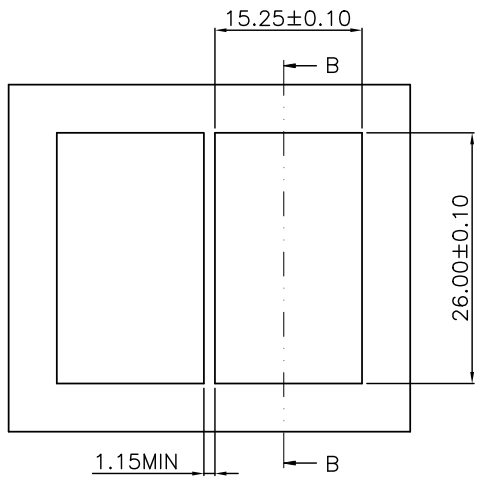
| NO. | ECN NO. | DESCRIPTION | REV. | DRAW | DATE |
|-----|---------|-------------|------|------|------|
| | | | | | |
| | | | | | |
| | | | | | |



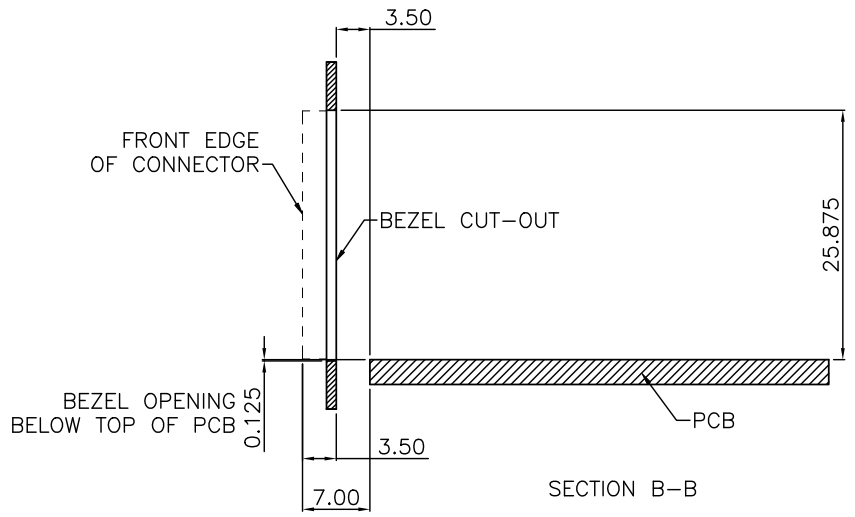
DETAIL-LIGHTPIPE LOCATION AND OTHER ZONES
SCALE 2:1



LED CLEARANCE REQUIREMENTS



BEZEL
RECOMMENDED PANEL CUTOUT AND PC BOARD
PANEL POSITION AND THICKNESS 0.8-2.6



SECTION B-B

| | | |
|------------------------|-------------|-------------|
| 未注公差 容许公差 TOLERANCE | . X ±0.35 | X. ° ±3° |
| | . XX ±0.25 | . X. ° ±2° |
| | . XXX ±0.15 | . XX. ° ±1° |

GLGNET® 深圳方向电子股份有限公司

| | | | | | | |
|-------------|-----|-------------|---------------|-----|----------------|---|
| 比例 SCALE | 1:1 | 角法 PROJ. | 设计 DESIGN | 陈宝华 | 品名 TITLE | 2x1 SFP-04 WITH INNER/OUTER LIGHT PIPE |
| 张数 SHEET | 4/4 | 纸张 SIZE | 校对 CHECKED | 郑先军 | 料号 ITEM NO. | 46019-11M321 |
| 单位 UNIT | mm | 版本 REV. | 核准 APPROVE | 邱秀嵘 | 图号 DWG NO. | GLG-WS-051 |