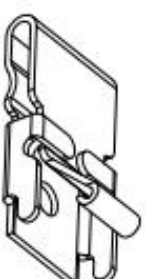
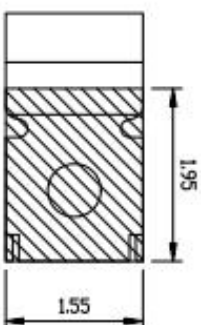
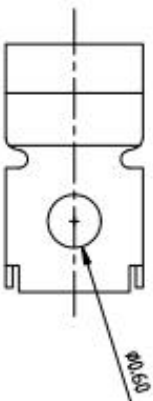
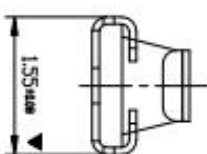
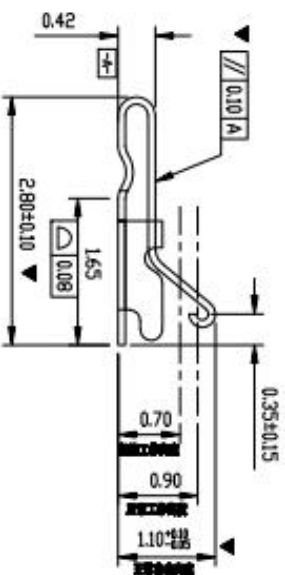
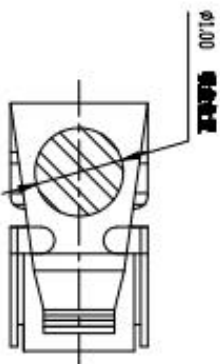


型号: KH-281511-TP

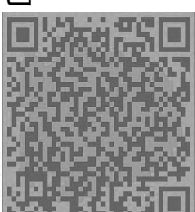
Rev.	ECN Number	Description	Date	Drawn	Checked	Approved

技术要求:

1. 材质: 不锈钢SUS304, T=0.08±0.005;
2. 端子锡脚焊接面和接触面不可有毛边, 其他部位毛边最大0.03mm;
3. 扭曲: 4.5°/1000mm, 拱形 5mm/1000mm;
4. 标示有"▲"符号的为重点控制和检验尺寸;
5. 未标注之R MAX R0.13;
6. 电镀须满足4,8小时盐雾测试;
7. 寿命测试>2万次, 产品弹力要求在60gf~80gf之间
8. 镀底50 80u"min, 焊接区域镀金, 接触区域镀金3U"MIN



技术详询



GENERAL TOLERANCE		SCALE		DRAWN		DATE	
XL ±0.50	XL ±2.0'	1:1	CHECK	DATE	DATE	DATE	DATE
X ±0.35	X ±1.0'	mm	APPROVE	DATE	DATE	DATE	DATE
.X ±0.25	.X ±1.0'	mm	DATE	DATE	DATE	DATE	DATE
.XX ±0.15	.XX ±0.5'	A4	DATE	DATE	DATE	DATE	DATE

DWG. NO.		PARTS NOT INTENDED USED	
681-0026B-1	L2.8*W1.55*H1.1		

REV.	SHEET
A	1/1