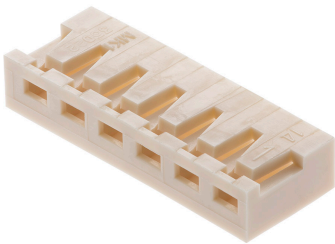




Part Number : [2124150600](#)
Product Description : 2.50mm Pitch, Board-In Crimp Housing, 6 Circuits, Right-Angle, Natural
Series Number : 212415
Status : Active
Product Category : Connector Housings



Documents & Resources

Drawings
[Drawing 2124150600_sd.pdf](#)

3D Models and Design Files
[3D Model 2124150600_stp.zip](#)

Specifications
[Packaging Specification 2124150000PK-000.pdf](#)
[Product Specification 2124150000PS-000.pdf](#)

Tooling Specifications
[Crimp Specification 350210000CS-000.pdf](#)

Product Environment Compliance

Compliance

| | |
|--------------------|--|
| GADSL/IMDS | Not Relevant |
| China RoHS | |
| EU ELV | Not Relevant |
| Low-Halogen Status | Low-Halogen per IEC 61249-2-21 |
| REACH SVHC | Not Contained per D(2023)3788-DC (14 Jun 2023) |
| EU RoHS | Compliant per EU 2015/863 |

[Multiple Part Product Compliance Statements](#)
- Eu RoHS
- REACH SVHC
- Low-Halogen

[Multiple Part Industry Compliance Documents](#)

- IPC 1752A Class C
- IPC 1752A Class D
- Molex Product Compliance Declaration
- IEC-62474
- chemSHERPA (xml)

EU RoHS Certificate of Compliance

Part Details

General

| | |
|----------------|--|
| Status | Active |
| Category | Connector Housings |
| Series | 212415 |
| Description | 2.50mm Pitch, Board-In Crimp Housing, 6 Circuits, Right-Angle, Natural |
| Application | Signal, Wire-to-Board |
| Product Family | Board-in Connectors |
| Product Name | Board-in |
| UPC | 193264513673 |

Physical

| | |
|-------------------------------|----------------|
| Circuits (maximum) | 6 |
| Color - Resin | Natural |
| Gender | N/A |
| Glow-Wire Capable | No |
| Material - Resin | Polyamide |
| Net Weight | 0.162/g |
| Number of Rows | 1 |
| Packaging Type | Bag |
| Panel Mount | No |
| Pitch - Mating Interface | 2.50mm |
| Stackable | No |
| Temperature Range - Operating | -40° to +105°C |

Use with Part(s)

| Description | Part Number |
|--|---|
| 2.50mm Pitch, Board-in Male Crimp Terminal, Right-Angle, Brass Tin (Sn) Plating, 22-28 AWG, Reel | /content/molex/molex-dot-com/us/en/products/product-page.html/350211001.html |
| 2.50mm Pitch, Board-in Male Crimp Terminal, Right-Angle, Tin (Sn) Plating, 22-28 AWG, Reel | /content/molex/molex-dot-com/us/en/products/product-page.html/350211160.html |