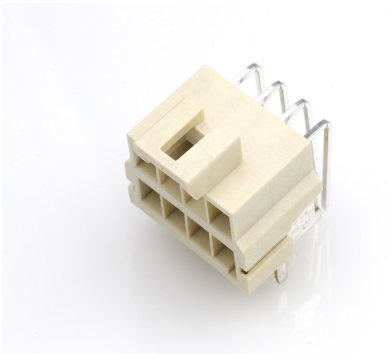




Part Number : [1723164208](#)
Product Description : Ultra-Fit Right-Angle Header with Solder Nail, 3.50mm Pitch, Dual Row, 8 Circuits, 0.38µm Gold (Au) Plating, Natural, Glow-Wire Capable
Series Number : [172316](#)
Status : Active
Product Category : [PCB Headers and Receptacles](#)



Documents & Resources


Drawings
[Drawing 1723164208_sd.pdf](#)
[Packaging Design Drawing 1723161114-PK-000.pdf](#)

3D Models and Design Files
[3D Model 1723164208_stp.zip](#)
[Symbol Footprint Data SYM-172316-3108-001.zip](#)

Specifications
[Application Specification 1723230003-000.pdf](#)
[Product Specification 1723230001-TS-000.pdf](#)
[Product Specification 1723231000-PS-CH-000.pdf](#)
[Product Specification 1723231000-PS-ES-000.pdf](#)
[Product Specification 1723231000-PS-JP-000.pdf](#)
[Product Specification 1723231000-PS-SK-000.pdf](#)
[Product Specification PS-172323-0001-001.pdf](#)

Product Environment Compliance

Compliance

GADSL/IMDS	Not Relevant
China RoHS	
EU ELV	Not Relevant
Low-Halogen Status	Low-Halogen per IEC 61249-2-21
REACH SVHC	Not Contained per D(2023)3788-DC (14 Jun 2023)
EU RoHS	Compliant per EU 2015/863

Multiple Part Product Compliance Statements

- Eu RoHS
- REACH SVHC
- Low-Halogen

Multiple Part Industry Compliance Documents

- IPC 1752A Class C
- IPC 1752A Class D
- Molex Product Compliance Declaration
- IEC-62474
- chemSHERPA (xml)

EU RoHS Certificate of Compliance

Part Details

General

Status	Active
Category	PCB Headers and Receptacles
Series	172316
Description	Ultra-Fit Right-Angle Header with Solder Nail, 3.50mm Pitch, Dual Row, 8 Circuits, 0.38µm Gold (Au) Plating, Natural, Glow-Wire Capable
Application	Power, Wire-to-Board
Comments	See Product Specification for maximum current rating by circuit size and wire AWG
Component Type	PCB Header
Product Family	Ultra-Fit Power Connectors
Product Name	Ultra-Fit
UPC	889056867023

Electrical

Current - Maximum per Contact	11.0A
Voltage - Maximum	600V AC (RMS)/DC

Physical

Breakaway	No
Circuits (Loaded)	8
Circuits (maximum)	8

Color - Resin	Natural
Durability (mating cycles max)	200
First Mate / Last Break	No
Glow-Wire Capable	Yes
Guide to Mating Part	No
Keying to Mating Part	Yes
Lock to Mating Part	Yes
Material - Metal	Copper Alloy
Material - Plating Mating	Gold
Material - Plating Termination	Matte Tin
Material - Resin	Liquid Crystal Polymer
Net Weight	3.260/g
Number of Rows	2
Orientation	Right Angle
Packaging Type	Tray
PC Tail Length	3.20mm
PCB Locator	Yes
PCB Retention	Yes
PCB Thickness - Recommended	1.60mm
Pitch - Mating Interface	3.50mm
Pitch - Termination Interface	3.50mm
Plating min - Mating	0.381µm
Plating min - Termination	1.524µm
Polarized to Mating Part	Yes
Polarized to PCB	Yes
Shrouded	Fully
Temperature Range - Operating	-40° to +120°C
Termination Interface Style	Through Hole

Mates With / Use With

Mates with Part(s)

Description	Part Number
-------------	-------------

Ultra-Fit Tangless Receptacle Housing, 3.50mm Pitch, Dual Row, 8 Circuits, Natural, Glow-Wire Capable	<u>1722584108</u>
--	-------------------