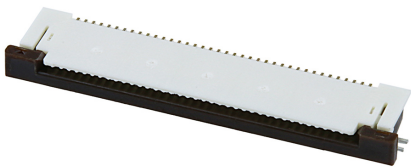




Part Number : [541043831](#)
Product Description : 0.50mm Pitch SlimStack Receptacle, Surface Mount, Dual Row, Vertical, 2.50mm Stacking Height, Gold Plating with Nickel Barrier, 40 Circuits
Series Number : 54102
Status : Active
Product Category : Board-to-Board Connectors



Documents & Resources


Drawings
[Drawing 541020404_sd.pdf](#)

3D Models and Design Files
[3D Model 541020404_stp.zip](#)

Specifications
[Packaging Specification SPK-54102-001-001.pdf](#)
[Product Specification PS-54102-011-001.pdf](#)

Product Environment Compliance

Compliance

GADSL/IMDS	Compliant with Exemption 44; 34; 33
China RoHS	
EU ELV	Not Relevant
Low-Halogen Status	Low-Halogen per IEC 61249-2-21
REACH SVHC	Not Contained per D(2023)3788-DC (14 Jun 2023)
EU RoHS	Compliant per EU 2015/863

- [Multiple Part Product Compliance Statements](#)
- Eu RoHS
 - REACH SVHC
 - Low-Halogen

[Multiple Part Industry Compliance Documents](#)

- IPC 1752A Class C
- IPC 1752A Class D
- Molex Product Compliance Declaration
- IEC-62474
- chemSHERPA (xml)

EU RoHS Certificate of Compliance

Part Details

General

Status	Active
Category	Board-to-Board Connectors
Series	54102
Description	0.50mm Pitch SlimStack Receptacle, Surface Mount, Dual Row, Vertical, 2.50mm Stacking Height, Gold Plating with Nickel Barrier, 40 Circuits
Series Name	0.5, BB H2.5
Application	Board-to-Board, Signal
Component Type	PCB Receptacle
Product Family	SlimStack Board-to-Board/Board-to-FPC Connectors
Product Name	SlimStack
UPC	822348279982

Agency

UL	E29179
----	--------

Electrical

Current - Maximum per Contact	0.5A
Voltage - Maximum	50V

Physical

Circuits (Loaded)	40
Circuits (maximum)	40
Color - Resin	Black
Durability (mating cycles max)	30

Glow-Wire Capable	No
Lock to Mating Part	Yes
Mated Height	2.50mm
Mated Width	5.30mm
Material - Metal	Phosphor Bronze
Material - Plating Mating	Gold
Material - Plating Termination	Gold
Net Weight	156.861/mg
Number of Rows	2
Orientation	Vertical
Packaging Type	Embossed Tape on Reel
PCB Locator	No
PCB Retention	None
PCB Thickness - Recommended	1.60mm
Pitch - Mating Interface	0.50mm
Polarized to Mating Part	No
Polarized to PCB	No
Temperature Range - Operating	-40° to +105°C
Termination Interface Style	Surface Mount

Mates With / Use With

Mates with Part(s)

Description	Part Number
0.50mm Pitch Dual Row SlimStack Plugs	<u>500334</u>
0.50mm Pitch Vertical SlimStack Plugs	<u>53885</u>