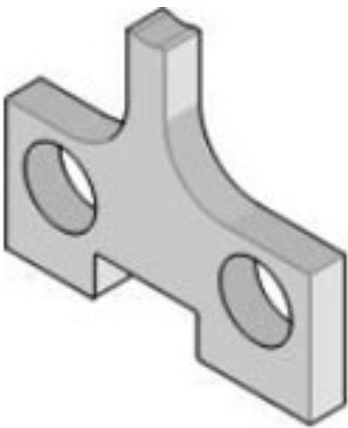




Part Number : [11241116](#)  
Product Description : Insulation Anvil  
Series Number : 207126  
Status : Active  
Product Category : Applicators and Crimp Modules  
Engineering Number : 6117 08



---

## Documents & Resources

Tooling Specifications  
[Application Tooling Specification ATS-STANDARD-PARTS-001.pdf](#)

---

## Product Environment Compliance

### Compliance

GADSL/IMDS	Not Relevant
China RoHS	Not Relevant
EU ELV	Not Relevant
Low-Halogen Status	Not Relevant
REACH SVHC	Not Contained per D(2023)3788-DC (14 Jun 2023)
EU RoHS	Compliant per EU 2015/863

### Multiple Part Product Compliance Statements

- Eu RoHS
- REACH SVHC
- Low-Halogen

### Multiple Part Industry Compliance Documents

- IPC 1752A Class C
- IPC 1752A Class D
- Molex Product Compliance Declaration
- IEC-62474
- chemSHERPA (xml)

## Part Details

### General

Status	Active
Category	Applicators and Crimp Modules
Series	207126
Description	Insulation Anvil
Comments	See Tooling Specification (PDF) Above
Function	Cutter
Geographic Area	Global
Level of Automation	Manual
More Detailed Tech Information	toolingsupport@molex.com
Product Family	Application Tooling
Product Name	N/A
Tool Type	Applicator
UPC	800753608399
Warranty Disclaimer	<p>CAUTION: Molex tooling crimp specifications are valid only when used with Molex terminals and tooling manufactured by Molex and sold by Molex or authorized distributors ("Molex Tooling"). When using tooling other than Molex Tooling with Molex specific connector systems listed in our ATS documents, the Molex tooling qualification does not apply and the responsibility for full qualification of the connector system is that of the customer. Molex accepts no liability for connector performance or tooling support where tooling other than Molex Tooling is used or where Molex Tooling is modified.</p>

### Physical

Net Weight	1.000/g
------------	---------

---

### Use with Part(s)

Description	Part Number
Terminator Die	<a href="/content/molex/molex-dot-com/us/en/products/product-page.html/11402265.html">/content/molex/molex-dot-com/us/en/products/product-page.html/11402265.html</a>

---

This document was generated on Jan 24, 2024