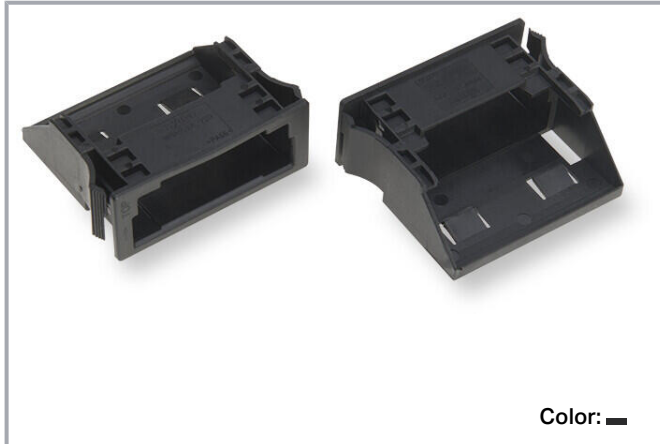


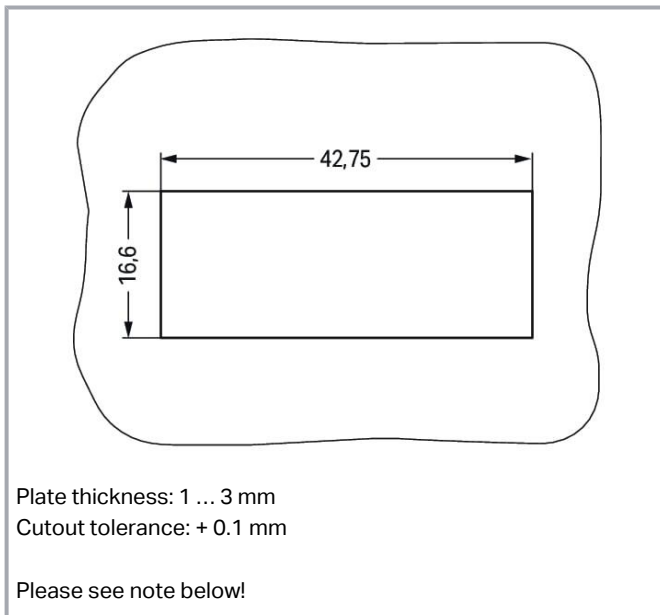
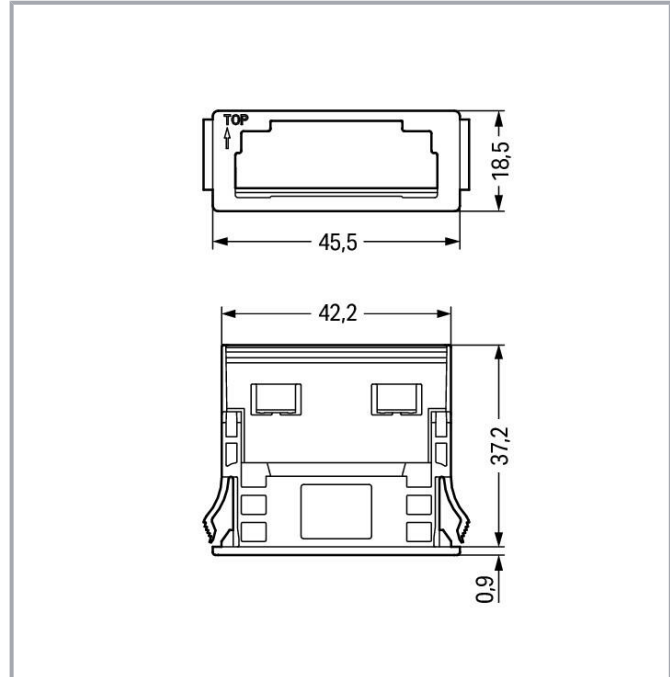
Data sheet | Item number: 770-319

Snap-in frame; 4-pole; 1.0 ... 3.0 mm; black

www.wago.com/770-319



Color: 



Subject to changes. Please also observe the further product documentation!

WAGO GmbH & Co. KG
Hansastr. 27
32423 Minden
Phone: +49571 887-0 | Fax: +49571 887-169
Email: info.de@wago.com | Web: www.wago.com

Do you have any questions about our products?
We are always happy to take your call at +49 (571) 887-44222.



Item description

Mounting accessories *WINSTA®* MIDI 4-pole

Thanks to the mounting accessories from the *WINSTA®* MIDI product line, straightforward installation is ensured. With WAGO, you get enjoy the advantages of a large selection of accessories for the *WINSTA®* product line. The *WINSTA®* MIDI product line offers total flexibility for the installation. Through its Push-in CAGE CLAMP® spring pressure connection technology, it achieves time-saving, error-free installation and offers customization and flexibility for meeting all installation requirements.

Lower costs through fast commissioning and elimination of service expenses – solutions from *WINSTA®* MIDI

The *WINSTA®* Pluggable Connection System allows pluggable electrical installation. This significantly reduces the need for servicing and lowers costs. Choose durability and quality – with protection against mismatching from WAGO makes the installation of electrical components significantly easier.

-
- simple circuits
- rapid, structured electrical installation

Data	
Notes	
Note	<p>The snap-in connectors must be relieved of tensile and transverse forces.</p> <p>A surface finish can influence the edge radius of the cutouts. This may affect the snap-in socket fit, so ensure an adequate fit before use.</p> <p>In addition, the punched edge should be on the inside for punched cutouts.</p> <p>The wings of the snap-in connectors must not be mechanically stressed for a long period before use (e.g., due to a pre-locking position).</p>

Connection data

Connection 1

Pole number	4
-------------	---

Subject to changes. Please also observe the further product documentation!



Physical data

Width	45.5 mm / 1.791 inches
Height	18.5 mm / 0.728 inches
Depth	37.2 mm / 1.465 inches

Mechanical Data

Housing sheet thickness	1 ... 3 mm / 0.039 ... 0.118 inches
Mounting type	Snap-in flange
Suitable	for socket and plug

Material data

Note (material data)	Information on material specifications can be found here
Color	black
Insulation material	Polyamide (PA66)
Flammability class per UL94	V0
Fire load	0.128 MJ
Weight	4.3 g

Environmental requirements

Processing temperature	-5 ... +40 °C
Continuous operating temperature	-35 ... +85 °C
Note on continuous operating temperature	Insulating parts for temperatures ≤ 105 °C

Commercial data

eCl@ss 10.0	27-44-06-92
eCl@ss 9.0	27-44-06-92
ETIM 8.0	EC002863
ETIM 7.0	EC002863
PU (SPU)	100 pcs
Packaging type	Foil
Country of origin	DE
GTIN	4055143404945
Customs tariff number	85366990990

Subject to changes. Please also observe the further product documentation!



Environmental Product Compliance

RoHS Compliance Status	Compliant, No Exemption
------------------------	-------------------------

Optional accessories

Locking levers

Locking system



Item no.: 770-140
Locking lever; for sockets and plugs; for tool operation; gray

www.wago.com/770-140

Downloads

Documentation

Bid Text

770-319 X81 - Datei	2019 Feb 19	xml 2.6 kB	Download
770-319 doc - Datei	2017 Apr 13	doc 24.1 kB	Download

CAD/CAE-Data

CAE data

ZUKEN Portal 770-319	URL	Download
----------------------	-----	----------

CAD data

2D/3D Models 770-319	URL	Download
----------------------	-----	----------

Asset Administration Shell

Asset Administration Shell 770-319	URL	Download
------------------------------------	-----	----------

Environmental Product Compliance

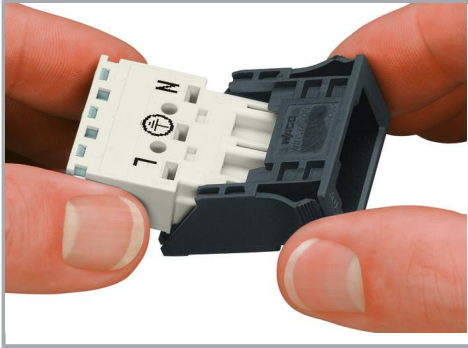
Compliance Search

Environmental Product Compliance 770-319 Snap-in frame; 4-pole; 1.0 ... 3.0 mm; black	URL	Download
--	-----	----------

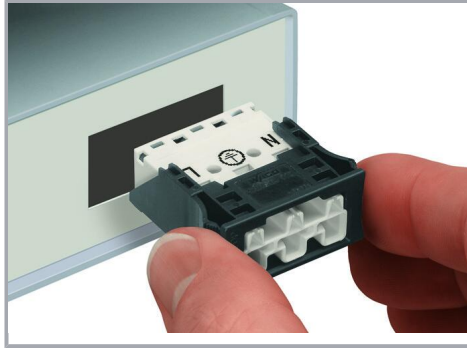
Subject to changes. Please also observe the further product documentation!

Installation Notes

Installation



Insert the socket or plug into the frame
(observe the "TOP" marking on the frame!),
then snap the assembled unit into the cutout.



Snap the assembled unit into the cutout.

Product family

WINSTA® MIDI

[Show all products from the family](#)

Subject to changes. Please also observe the further product documentation!