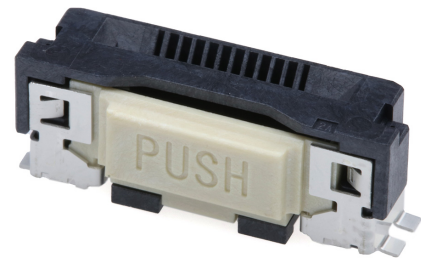




Part Number : [2004850710](#)
Product Description : Easy-On FFC/FPC One-Touch Connector, 0.50mm Pitch, Vertical, 5.60mm Height, 105°C Operating Temperature, 10 Circuits, Gold (Au) Plating, with Ground Terminal
Series Number : 200485
Status : Active
Product Category : FFC / FPC Connectors



Documents & Resources

Drawings

[Drawing 2004850710_sd.pdf](#)

3D Models and Design Files

[3D Model 2004850710_stp.zip](#)


Specifications

[Packaging Specification 2004859200-SPK-201.pdf](#)

[Product Specification 2004851400-PS-000.pdf](#)

Product Environment Compliance

Compliance

GADSL/IMDS	Compliant with Exemption 44; 34; 33
China RoHS	
EU ELV	Not Relevant
Low-Halogen Status	Low-Halogen per IEC 61249-2-21
REACH SVHC	Not Contained per D(2023)3788-DC (14 Jun 2023)
EU RoHS	Compliant per EU 2015/863

[Multiple Part Product Compliance Statements](#)

- Eu RoHS
- REACH SVHC
- Low-Halogen

[Multiple Part Industry Compliance Documents](#)

- IPC 1752A Class C
- IPC 1752A Class D
- Molex Product Compliance Declaration
- IEC-62474
- chemSHERPA (xml)

EU RoHS Certificate of Compliance

Part Details

General

Status	Active
Category	FFC / FPC Connectors
Series	200485
Description	Easy-On FFC/FPC One-Touch Connector, 0.50mm Pitch, Vertical, 5.60mm Height, 105°C Operating Temperature, 10 Circuits, Gold (Au) Plating, with Ground Terminal
Product Family	Easy-On FFC FPC Connectors
Product Name	Easy-On
UPC	191130074662

Electrical

Current - Maximum per Contact	0.5A
Voltage - Maximum	50V

Physical

Actuator Type	One-Touch
Circuits (Loaded)	10
Circuits (maximum)	10
Color - Resin	Black
Contact Position	N/A
Durability (mating cycles max)	20
Mated Height	5.60mm
Material - Metal	Copper Alloy
Material - Plating Mating	Gold
Material - Resin	Liquid Crystal Polymer
Net Weight	358.386/mg

Orientation	Vertical
Packaging Type	Embossed Tape on Reel
PCB Mounting	Surface Mount
PCB Retention	Yes
Pitch - Mating Interface	0.50mm
Polarized to PCB	Yes
Stackable	No
Temperature Range - Operating	-40° to +105°C
Wire/Cable Type	FFC/FPC

Mates With / Use With

Mates with Part(s)

Description	Part Number
0.50mm Pitch Premo-Flex LVDS Jumpers	<u>15026</u>