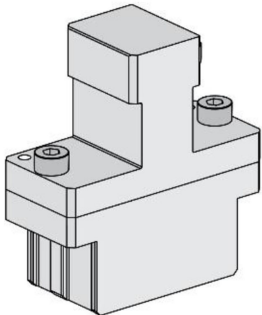




Part Number : [2002141430](#)
Product Description : Impulse Backplane
Signal Module Insertion Tool (6-Pair by 8-
Column Assemblies)
Series Number : 207123
Status : Obsolete
Product Category : Application Tooling
Accessories



Documents & Resources

Tooling Specifications
[Application Tooling Specification 2002141430-000.pdf](#)

Product Environment Compliance

Compliance

| | |
|--------------------|--------------|
| China RoHS | Not Reviewed |
| EU ELV | Not Reviewed |
| Low-Halogen Status | Not Reviewed |
| REACH SVHC | Not Reviewed |
| EU RoHS | Not Reviewed |

Multiple Part Product Compliance Statements

- Eu RoHS
- REACH SVHC
- Low-Halogen

Multiple Part Industry Compliance Documents

- IPC 1752A Class C
- IPC 1752A Class D
- Molex Product Compliance Declaration
- IEC-62474
- chemSHERPA (xml)

EU RoHS Certificate of Compliance

Part Details

General

| | |
|--------------------------------|--|
| Status | Obsolete |
| Category | Application Tooling Accessories |
| Series | 207123 |
| Description | Impulse Backplane Signal Module Insertion Tool (6-Pair by 8-Column Assemblies) |
| Comments | See Tooling Specification (PDF) Above |
| Function | Insertion |
| Geographic Area | Global |
| Level of Automation | Manual |
| More Detailed Tech Information | toolingsupport@molex.com |
| Product Family | Application Tooling |
| Product Name | Impulse |
| Tool Type | Press-Fit Insertion Tool |
| UPC | 193264462452 |
| Warranty Disclaimer | <p>CAUTION: Molex tooling crimp specifications are valid only when used with Molex terminals and tooling manufactured by Molex and sold by Molex or authorized distributors ("Molex Tooling"). When using tooling other than Molex Tooling with Molex specific connector systems listed in our ATS documents, the Molex tooling qualification does not apply and the responsibility for full qualification of the connector system is that of the customer. Molex accepts no liability for connector performance or tooling support where tooling other than Molex Tooling is used or where Molex Tooling is modified.</p> |