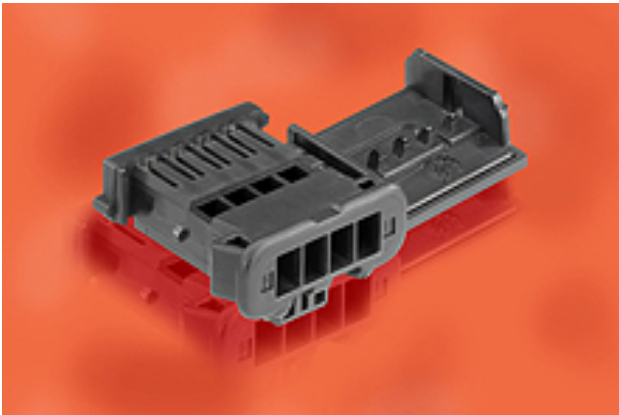




Part Number : [988171041](#)
Product Description : NSCC Single Part,
Unsealed, 1.50mm, Female Housing, 3.33mm
Pitch NSCC, Wire-to-Wire, 4 Circuits, Black
Series Number : 98817
Status : Active
Product Category : Connector Housings
Engineering Number : 010201321



Documents & Resources

Drawings

[Drawing 988171041_sd.pdf](#)
[Packaging Design Drawing PK-31301-635-001.pdf](#)

3D Models and Design Files

[3D Model 988171041_stp.zip](#)

Specifications

[Application Specification 988210001-AS-CH-001.pdf](#)
[Application Specification 988210001-PS-CH-001.pdf](#)
[Product Specification PS-98821-001-001.pdf](#)

Product Environment Compliance

Compliance

GADSL/IMDS	Compliant
China RoHS	Not Relevant
EU ELV	Compliant per 2000/53/EC
Low-Halogen Status	Not Relevant
REACH SVHC	Not Contained per D(2023)3788-DC (14 Jun 2023)
EU RoHS	Compliant per EU 2015/863

Multiple Part Product Compliance Statements

- Eu RoHS
- REACH SVHC

- Low-Halogen

Multiple Part Industry Compliance Documents

- IPC 1752A Class C
- IPC 1752A Class D
- Molex Product Compliance Declaration
- IEC-62474
- chemSHERPA (xml)

EU RoHS Certificate of Compliance

Part Details

General

Status	Active
Category	Connector Housings
Series	98817
Description	NSCC Single Part, Unsealed, 1.50mm, Female Housing, 3.33mm Pitch NSCC, Wire-to-Wire, 4 Circuits, Black
Application	Power, Wire-to-Wire
Product Family	NSCC - New Standard Casing Contact
Product Name	NSCC
UPC	822348760930

Electrical

Current - Maximum per Contact	10.0A
-------------------------------	-------

Physical

Breakaway	No
Circuits Detail	4 x 1.5mm female terminals
Circuits (maximum)	4
Color - Resin	Black
Gender	Receptacle
Glow-Wire Capable	No
Keying to Mating Part	Yes
Lock to Mating Part	Yes
Material - Resin	Polyester

Net Weight	2.480/g
Number of Rows	1
Packaging Type	Carton
Panel Mount	No
Pitch - Mating Interface	3.33mm
Pitch - Termination Interface	3.33mm
Polarized to Mating Part	Yes
Ports	1
Temperature Range - Operating	-40° to +100°C

Solder Process Data

Lead-Free Process Capability	N/A
------------------------------	-----

Mates With / Use With

Mates with Part(s)

Description	Part Number
NSCC 3.33mm Pitch Male Pin Connector, Non-Sealed, 4 Circuits, Black	<u>0988221041</u>

Use with Part(s)

Description	Part Number
NSCC Receptacle Terminal Size 1.5, Wire Size 0.22 up to 0.44mm ²	<u>/content/molex/molex-dot-com/us/en/products/product-page.html/988971109.html</u>
NSCC Receptacle Terminal Size 1.5, Wire Size 0.49 up to 0.94mm ²	<u>/content/molex/molex-dot-com/us/en/products/product-page.html/988971119.html</u>
NSCC Receptacle Terminal Size 1.5, Wire Size 0.95 up to 1.87mm ²	<u>/content/molex/molex-dot-com/us/en/products/product-page.html/988971129.html</u>

Application Tooling

Global

Description	Part Number
Extractor Tool for Unsealed Receptacle Connectors	<u>0638133800</u>

