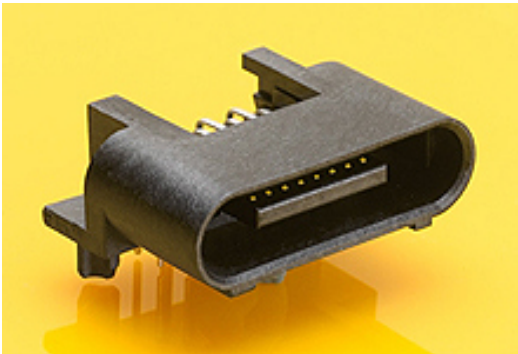




Part Number : [459850483](#)
Product Description : EXTreme LHPower Plug, Right-Angle, 40 Signal Contacts, Select Gold (Au) Plating, with Optional Pegs, with Optional Guides for 1.57mm Thick PC Board
Series Number : 45985
Status : Active
Product Category : Board-to-Board Connectors



Documents & Resources


Drawings
[Drawing 459850483_sd.pdf](#)
[Packaging Design Drawing PK-45984-001-001.pdf](#)

3D Models and Design Files
[3D Model 459850483_stp.zip](#)
[Symbol Footprint Data SYM-45985-0481-001.zip](#)

Specifications
[Product Specification PS-45984-001-001.pdf](#)

Product Environment Compliance

Compliance

GADSL/IMDS	Compliant with Exemption 44; 34; 33
China RoHS	
EU ELV	Not Relevant
Low-Halogen Status	Low-Halogen per IEC 61249-2-21
REACH SVHC	Not Contained per D(2023)3788-DC (14 Jun 2023)
EU RoHS	Compliant per EU 2015/863

Multiple Part Product Compliance Statements
- Eu RoHS
- REACH SVHC
- Low-Halogen

Multiple Part Industry Compliance Documents

- IPC 1752A Class C
- IPC 1752A Class D
- Molex Product Compliance Declaration
- IEC-62474
- chemSHERPA (xml)

EU RoHS Certificate of Compliance

Part Details

General

Status	Active
Category	Board-to-Board Connectors
Series	45985
Description	EXTreme LPHPower Plug, Right-Angle, 40 Signal Contacts, Select Gold (Au) Plating, with Optional Pegs, with Optional Guides for 1.57mm Thick PC Board
Application	Board-to-Board, Power
Component Type	PCB Header
Product Family	EXTreme LPHPower Connectors
Product Name	EXTreme LPHPower
UPC	883906320812

Agency

CSA	LR19980
UL	E29179

Electrical

Current - Maximum per Contact	20.0A
Voltage - Maximum	250V AC (RMS)/DC

Physical

Breakaway	No
Circuits (Loaded)	40
Circuits (maximum)	40
Color - Resin	Black

Durability (mating cycles max)	250
First Mate / Last Break	No
Flammability	94V-0
Glow-Wire Capable	No
Guide to Mating Part	No
Keying to Mating Part	None
Lock to Mating Part	No
Material - Metal	High Performance Alloy (HPA)
Material - Plating Mating	Gold
Material - Plating Termination	Tin
Material - Resin	High Temperature Thermoplastic
Net Weight	3.439/g
Number of Rows	2
Orientation	Right Angle
Packaging Type	Tray
PC Tail Length	2.90mm
PCB Locator	No
PCB Retention	Yes
PCB Thickness - Recommended	1.57mm
Pitch - Mating Interface	1.27mm
Plating min - Mating	0.762μm
Plating min - Termination	3.810μm
Polarized to Mating Part	Yes
Polarized to PCB	Yes
(p)ower-(s)ignal Configuration	40s - 0p
Shrouded	Fully
Stackable	No
Temperature Range - Operating	-40° to +105°C
Termination Interface Style	Through Hole

Solder Process Data

Max-Duration	20
Lead-Free Process Capability	WAVE
Max-Cycle	3
Max-Temp	260

Mates With / Use With

Mates with Part(s)

Description	Part Number
EXTreme LPHPower Right-Angle PCB Receptacles	<u>45984</u>