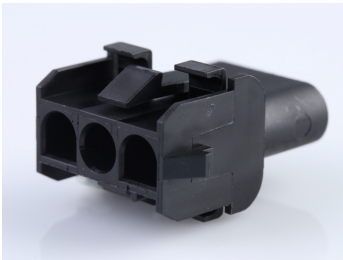




Part Number : [366480023](#)  
Product Description : 2.13mm Diameter MLX  
Pin and Socket Receptacle, 3 Circuit, Black  
Series Number : 36648  
Status : Active  
Product Category : Connector Housings



## Documents & Resources

### Drawings

[Drawing 366480023\\_sd.pdf](#)  
[Packaging Design Drawing PK-42022-XX-001.pdf](#)

### 3D Models and Design Files


[3D Model 366480023\\_stp.zip](#)

### Specifications

[Product Specification PS-42022-0001-001.pdf](#)

## Product Environment Compliance

### Compliance

|                    |   |
|--------------------|---|
| GADSL/IMDS         | Not Relevant  |
| China RoHS         |  |
| EU ELV             | Not Relevant  |
| Low-Halogen Status | Low-Halogen per IEC 61249-2-21  |
| REACH SVHC         | Not Contained per D(2023)3788-DC (14 Jun 2023)  |
| EU RoHS            | Compliant per EU 2015/863   |

### Multiple Part Product Compliance Statements

- Eu RoHS
- REACH SVHC
- Low-Halogen

### Multiple Part Industry Compliance Documents

- IPC 1752A Class C
- IPC 1752A Class D
- Molex Product Compliance Declaration

- IEC-62474
- chemSHERPA (xml)

## EU RoHS Certificate of Compliance

---

### Part Details

#### General

|                |   |
|----------------|---|
| Status         | Active  |
| Category       | Connector Housings  |
| Series         | 36648   |
| Description    | 2.13mm Diameter MLX Pin and Socket Receptacle, 3 Circuit, Black       |
| Application    | Power, Wire-to-Wire   |
| Comments       | Maximum current per contact 20A if used with 36663 and 36664 terminal |
| Product Family | MLX Power Connectors  |
| Product Name   | MLX   |
| UPC            | 884982487567  |

#### Agency

|     |         |
|-----|---------|
| CSA | LR19980 |
| UL  | E29179  |

#### Electrical

|                               |       |
|-------------------------------|-------|
| Current - Maximum per Contact | 20.0A |
|-------------------------------|-------|

#### Physical

|                       |            |
|-----------------------|------------|
| Circuits (maximum)    | 3          |
| Color - Resin         | Black      |
| Flammability          | 94V-2      |
| Gender                | Receptacle |
| Glow-Wire Capable     | No         |
| Keying to Mating Part | None       |
| Lock to Mating Part   | Yes        |
| Material - Resin      | Nylon      |
| Net Weight            | 3.191/g    |

|                               |                |
|-------------------------------|----------------|
| Number of Rows                | 1              |
| Packaging Type                | Carton         |
| Panel Mount                   | Yes            |
| Pitch - Mating Interface      | 6.35mm         |
| Polarized to Mating Part      | Yes            |
| Stackable                     | No             |
| Temperature Range - Operating | -55° to +105°C |

---

## Mates With / Use With

### Mates with Part(s)

| Description                                   | Part Number  |
|---|--------------|
| 2.13mm Diameter MLX Power Crimp Housing Plugs | <u>42021</u> |

### Use with Part(s)

| Description                | Part Number  |
|----------------------------|--------------|
| MLX Male Crimp Terminals   | <u>42023</u> |
| MLX Female Crimp Terminals | <u>42024</u> |