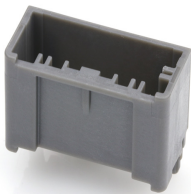




Part Number : [347929082](#)
Product Description : Mini50 Unsealed
Vertical Header, Single Row, 8 Circuit,
Polarization Option C, Dark Gray, Tube
Series Number : 34792
Status : Active
Product Category : PCB Headers and
Receptacles



Documents & Resources

Drawings

[Drawing 347929082_sd.pdf](#)
[Packaging Design Drawing PK-31301-688-001.pdf](#)

3D Models and Design Files

[3D Model 347929082_stp.zip](#)

Specifications

[Application Specification AS-34791-020-CH-001.pdf](#)
[Application Specification AS-34791-020-001.pdf](#)
[Product Specification PS-34791-020-001.pdf](#)
[Test Summary 347910020-TS-000.pdf](#)

Product Environment Compliance

Compliance

| | |
|--------------------|---|
| GADSL/IMDS | Compliant with Exemption 44; 33 |
| China RoHS | Not Relevant |
| EU ELV | Compliant per 2000/53/EC |
| Low-Halogen Status | Not Relevant |
| REACH SVHC | Not Contained per D(2023)3788-DC (14 Jun 2023) |
| EU RoHS | Compliant per EU 2015/863 |

Multiple Part Product Compliance Statements

- Eu RoHS
- REACH SVHC
- Low-Halogen

Multiple Part Industry Compliance Documents

- IPC 1752A Class C
- IPC 1752A Class D
- Molex Product Compliance Declaration
- IEC-62474
- chemSHERPA (xml)

EU RoHS Certificate of Compliance

Part Details

General

| | |
|----------------|--|
| Status | Active |
| Category | PCB Headers and Receptacles |
| Series | 34792 |
| Description | Mini50 Unsealed Vertical Header, Single Row, 8 Circuit, Polarization Option C, Dark Gray, Tube |
| Application | Automotive, Power, Signal, Wire-to-Board |
| Component Type | PCB Header |
| Product Family | Mini50 Connection Systems |
| Product Name | Mini50 |
| UPC | 887191058719 |

Electrical

| | |
|-------------------------------|---------------------------|
| Current - Maximum per Contact | 4.0A (for reference only) |
| Voltage - Maximum | 14V (typical operating) |

Physical

| | |
|-------------------------|-------------|
| Breakaway | No |
| Circuits (Loaded) | 8 |
| Circuits (maximum) | 8 |
| Color - Resin | Gray (Dark) |
| First Mate / Last Break | No |
| Glow-Wire Capable | No |
| Guide to Mating Part | No |
| Keying to Mating Part | Yes |
| Lock to Mating Part | Yes |

| | |
|--------------------------------|-----------------|
| Material - Metal | Brass |
| Material - Plating Mating | Tin |
| Material - Plating Termination | Tin |
| Material - Resin | Polyester Alloy |
| Net Weight | 1.200/g |
| Number of Rows | 1 |
| Orientation | Vertical |
| Packaging Type | Tube |
| PC Tail Length | 2.90mm |
| PCB Locator | Yes |
| Pitch - Mating Interface | 2.00mm |
| Polarized to Mating Part | Yes |
| Polarized to PCB | Yes |
| Temperature Range - Operating | -40° to +105°C |
| Termination Interface Style | Through Hole |

Mates With / Use With

Mates with Part(s)

| Description | Part Number |
|-------------------------------------|--------------|
| Mini50 Unsealed Receptacle Housings | <u>34791</u> |