

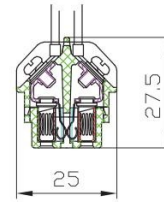
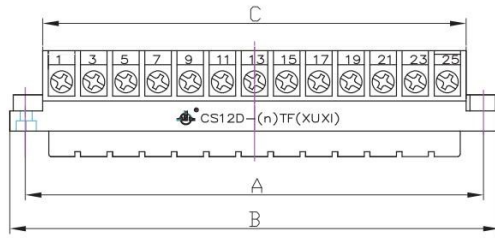
CS12D型连接器

环境温度：-40°C~100°C
 相对湿度：温度+40°C、达93%
 大气压力：40KPa
 振动：振频10~200Hz，加速度达50m/s²
 冲击：频率40~80次/分，加速度达100m/s²

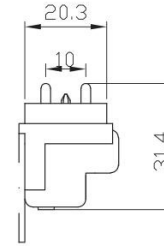
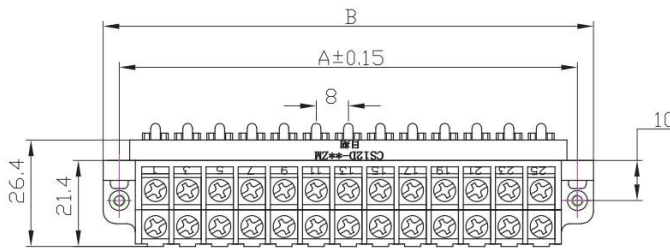
额定电压：300V
 额定电流：20A
 抗电强度：≥3000V
 接触电阻：≤0.01Ω
 绝缘电阻：≥1000MΩ
 寿命：500次

主要客户：深圳市科陆电子科技股份有限公司、南京磐能电力科技股份有限公司

CS12D-(n)TF(XUXI)

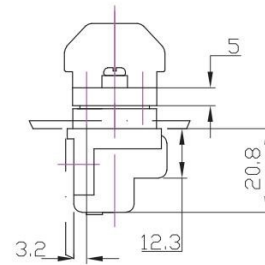
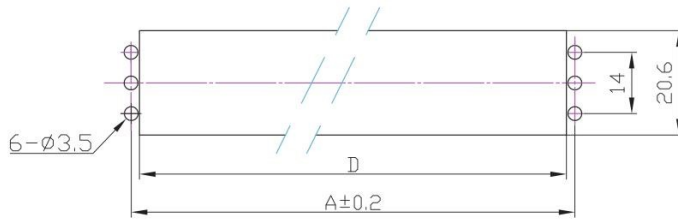


CS12D-(n)ZM

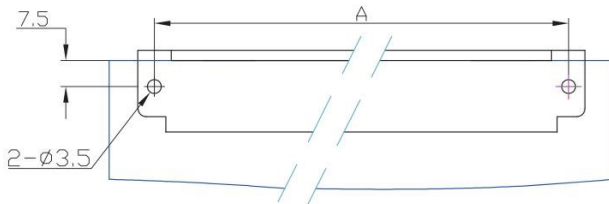


安装示意图

机箱开孔尺寸图



线路板安装开孔尺寸图



产品型号	A	B	C	D
CS12D-26TF/ZM	114	122	105.6	109.8
CS12D-16TF/ZM	74	82	65.6	69.8
CS12D-12TF/ZM	58	66	49.6	53.8
CS12D-8TF/ZM	42	50	33.6	37.8

