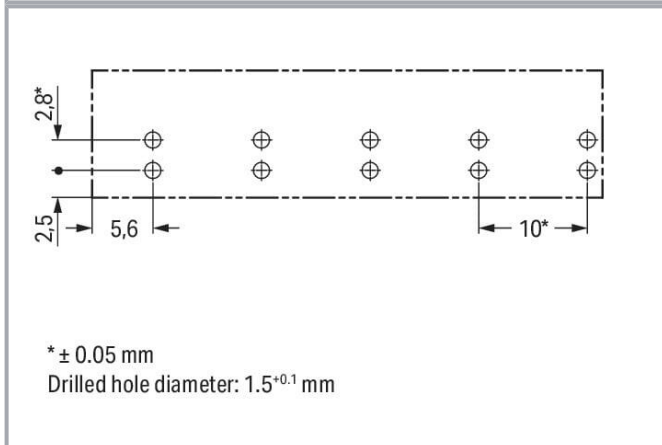
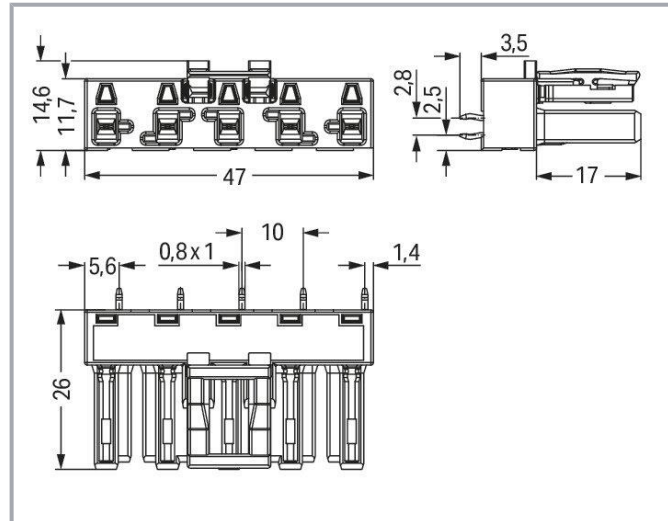
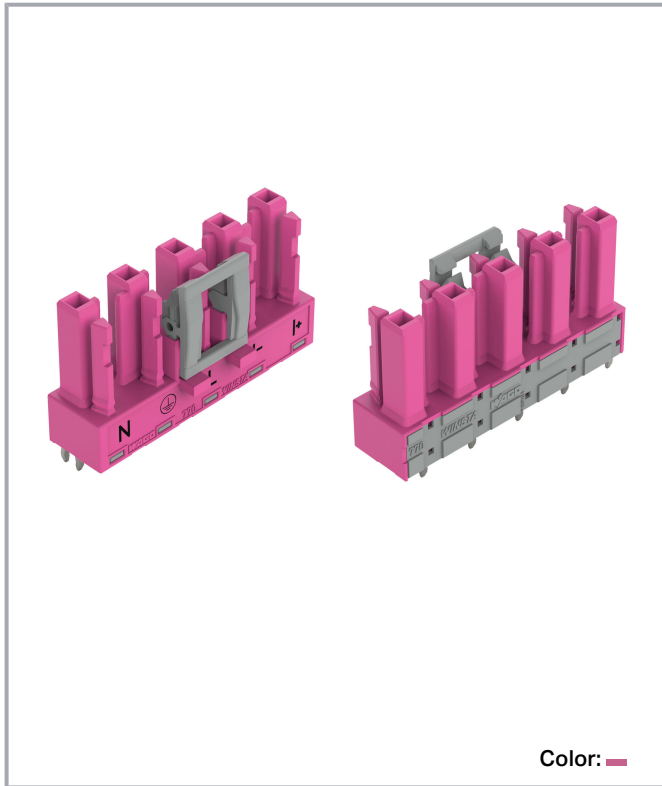


**Data sheet | Item number: 770-885/080-000**  
Socket for PCBs; straight; 5-pole; Cod. B; pink

[www.wago.com/770-885/080-000](http://www.wago.com/770-885/080-000)



Subject to changes. Please also observe the further product documentation!

WAGO GmbH & Co. KG  
Hansastr. 27  
32423 Minden  
Phone: +49571 887-0 | Fax: +49571 887-169  
Email: [info.de@wago.com](mailto:info.de@wago.com) | Web: [www.wago.com](http://www.wago.com)

Do you have any questions about our products?  
We are always happy to take your call at +49 (571) 887-44222.



## Item description

### Female connector/socket WINSTA® MIDI B coding

The WINSTA® MIDI female connector/socket 5-pole offers very secure handling to support drive and control technology tasks. Our large number of pluggable PCB connectors with various insertion directions and operating variants offers you the perfect solution for your application at any time. The coding options reduce installation errors, allowing fast, secure wiring of all components. The standardised interface for motor control allows easy installation and activation of shading and sun protection systems. B coding enables the WINSTA® MIDI pcb connectors to be used for control in applications in the domains of automation, mechanical engineering and robotics. This pcb connectors can be used for electrical currents up to 25 A. Thus the product is also suitable for high power loads. The WINSTA® MIDI Pluggable Connection System with Push-in CAGE CLAMP® spring pressure connection technology facilitates exemplary electrification. Thanks to the integrated test slot, it is possible to check connections even when they are plugged in. That saves time and reduces installation labor and costs.

### WINSTA® MIDI solutions for your electrical installation – protected against mismatching and maintenance-free

WINSTA® is the pluggable connection system that is optimally tailored to the strict requirements of electrical installation. It ensures error-free installation of cables and components, quickly and reliably. Choose durability and quality – with locking lever from WAGO makes the electrical installation of electrical components significantly easier.

- 
- protection against mismatching eliminates errors
- pre-assembled versions
- with B coding for use in process automation, such as lighting technology, for instance
- convenient installation and commissioning

## Data

### Notes

Variants:

Other pole markings

Other versions (or variants) can be requested from WAGO Sales or configured at <https://configurator.wago.com/>.

## Electrical data

### Ratings per IEC/EN

|                         |                |
|-------------------------|----------------|
| Ratings per             | IEC/EN 60664-1 |
| Nominal voltage (III/3) | 400 V          |

Subject to changes. Please also observe the further product documentation!

WAGO GmbH & Co. KG  
Hansastr. 27  
32423 Minden  
Phone: +49571 887-0 | Fax: +49571 887-169  
Email: [info.de@wago.com](mailto:info.de@wago.com) | Web: [www.wago.com](http://www.wago.com)

Do you have any questions about our products?  
We are always happy to take your call at +49 (571) 887-44222.



|                               |  |
|-------------------------------|--|
| Rated impulse voltage (III/3) | 6 kV   |
| Rated current                 | 25 A   |
| Legend (ratings)              | (III / 3) $\triangleq$ Overvoltage category III / Pollution degree 3 |

## Ratings per IEC/EN – Notes

|                      |   |
|----------------------|---|
| Note (rated current) | 25 A for 3-pole load<br>20 A for 4- and 5-pole load |
|----------------------|---|

## Ratings per UL 1977

|                         |  |
|-------------------------|--|
| Note for the US market  | Some versions may also be used for current interruption in accordance with the UL certificate in select applications with currents below 16 A and voltages up to 600 V. For further information, please contact your local sales office. |
| Rated voltage (UL 1977) | 600 V  |
| Rated current UL 1977   | 23 A   |

## General information

|                            |  |
|----------------------------|--|
| Note on contact resistance | approx. 1 m $\Omega$ of contact resistance<br>approx. 0.25 m $\Omega$ contact transition plug/socket |
|----------------------------|--|

## Connection data

|                            |   |
|----------------------------|---|
| Total number of potentials | 5 |
| Number of levels           | 1 |

## Connection 1

|             |   |
|-------------|---|
| Pole number | 5 |
|-------------|---|

## Physical data

|                                      |                                   |
|--------------------------------------|-----------------------------------|
| Pin spacing                          | 10 mm / 0.394 inches              |
| Width                                | 47 mm / 1.85 inches               |
| Height                               | 29.5 mm / 1.161 inches            |
| Height from the surface              | 26 mm / 1.024 inches              |
| Depth                                | 14.6 mm / 0.575 inches            |
| Solder pin length                    | 3.5 mm                            |
| Solder pin dimensions                | 1 x 0.8 mm                        |
| Drilled hole diameter with tolerance | 1.5 <sup>(-0.1 ... +0.1)</sup> mm |

Subject to changes. Please also observe the further product documentation!

WAGO GmbH & Co. KG  
Hansastr. 27  
32423 Minden  
Phone: +49571 887-0 | Fax: +49571 887-169  
Email: [info.de@wago.com](mailto:info.de@wago.com) | Web: [www.wago.com](http://www.wago.com)

Do you have any questions about our products?  
We are always happy to take your call at +49 (571) 887-44222.



## Mechanical Data

|   |  |
|---|--|
| Technology                              | SMI  |
| Application                             | Control technology                                       |
| Coding                                  | B  |
| Variable coding                         | Yes  |
| Marking                                 | N $\perp$ L I- I+  |
| Potential marking                       | N $\perp$ L I- I+  |
| Mating force of a plug-in connection    | approx. 20 ... 70 N (depending on pole number)           |
| Retention force of a plug-in connection | Locked: > 80 N   |
| Unmating force of a plug-in connection  | Unlocked: approx. 20 ... 70 N (depending on pole number) |
| Number of mating cycles                 | 200, without resistive load                              |
| Design                                  | straight   |

## Plug-in connection

|                                    |  |
|------------------------------------|--|
| Contact type (pluggable connector) | Female connector/socket  |
| Connector (connection type)        | for PCB  |
| Mismating protection               | Yes  |
| Note on mismating protection       | All WINSTA <sup>®</sup> components are 100% protected against mismating when:<br>a.) plugging different numbers of poles<br>b.) plugging while rotated 180<br>c.) plugging while laterally staggered<br>d.) plugging one pole  |
| Mating direction to the PCB        | 90 °   |
| Locking lever                      | yes  |
| Locking of plug-in connection      | locking lever  |
| Note on locking system             | All connectors for mounted installations (snap-in versions for lighting fixtures or devices, all types of PCB and distribution connectors) are factory-equipped with locking levers to ensure plugs and sockets are securely locked. Additional locking levers are only required for flying leads (plug/socket). |

## PCB contact

|                                     |                            |
|-------------------------------------|----------------------------|
| PCB contact                         | THT                        |
| Solder pin arrangement              | 2 in-line solder pins/pole |
| Number of solder pins per potential | 2                          |

Subject to changes. Please also observe the further product documentation!



## Material data

Note (material data)

Information on material specifications can be found here

|                             |   |
|-----------------------------|---|
| Color                       | pink                                    |
| Insulation material         | Polyamide (PA66)                        |
| Flammability class per UL94 | V0                                      |
| Clamping spring material    | Chrome-nickel spring steel (CrNi)       |
| Contact material            | Copper or copper alloy; surface-treated |
| Contact plating             | Tin                                     |
| Fire load                   | 0.195 MJ                                |
| Weight                      | 10.5 g                                  |

## Environmental requirements

|  |   |
|--|---|
| Processing temperature                   | -5 ... +40 °C                                   |
| Continuous operating temperature         | -35 ... +85 °C                                  |
| Note on continuous operating temperature | Insulating parts for temperatures $\leq 105$ °C |

## Commercial data

|                       |               |
|-----------------------|---------------|
| eCl@ss 10.0           | 27-44-06-05   |
| eCl@ss 9.0            | 27-44-06-05   |
| ETIM 8.0              | EC002560      |
| ETIM 7.0              | EC002560      |
| PU (SPU)              | 50 pcs        |
| Packaging type        | box           |
| Country of origin     | PL            |
| GTIN                  | 4050821553915 |
| Customs tariff number | 85366990990   |

## Environmental Product Compliance

|                        |                         |
|------------------------|-------------------------|
| RoHS Compliance Status | Compliant, No Exemption |
|------------------------|-------------------------|

## Other

|            |     |
|------------|-----|
| Technology | SMI |
|------------|-----|


Subject to changes. Please also observe the further product documentation!

WAGO GmbH & Co. KG  
Hansastr. 27  
32423 Minden  
Phone: +49571 887-0 | Fax: +49571 887-169  
Email: [info.de@wago.com](mailto:info.de@wago.com) | Web: [www.wago.com](http://www.wago.com)




Do you have any questions about our products?  
We are always happy to take your call at +49 (571) 887-44222.

## Approvals / Certificates

### General approvals



| Logo   | Approval                                | Additional Approval Text | Certificate name |
|--|---|--------------------------|------------------|
|  | cURus<br>Underwriters Laboratories Inc. | UL 1977                  | E45171           |

## Counterpart

|  |   |  |
|--|---|--|
|  | Item no. 770-295/080-000<br>Plug; 5-pole; Cod. B; 4,00 mm <sup>2</sup> ; pink   | <a href="http://www.wago.com/770-295/080-000">www.wago.com/770-295/080-000</a>                   |
|  | Item no. 771-9935/006-107/080-000<br>pre-assembled interconnecting cable; Eca; Socket/plug; 5-pole; Cod. B; H05VV-F 5G 1.5 mm <sup>2</sup> ; 1 m; 1,50 mm <sup>2</sup> ; pink | <a href="http://www.wago.com/771-9935/006-107/080-000">www.wago.com/771-9935/006-107/080-000</a> |
|  | Item no. 771-9935/206-307/080-000<br>pre-assembled connecting cable; Eca; Plug/open-ended; 5-pole; Cod. B; H05VV-F 5G 1.5 mm <sup>2</sup> ; 3 m; 1,50 mm <sup>2</sup> ; pink  | <a href="http://www.wago.com/771-9935/206-307/080-000">www.wago.com/771-9935/206-307/080-000</a> |

## Required accessories

### Cover

| Cover  |   |  |
|--|---|--|
|  | Item no.: 770-201<br>Lockout cap; 12-pole, separable; for sockets; Plastic; black | <a href="http://www.wago.com/770-201">www.wago.com/770-201</a> |
|  | Item no.: 770-221<br>Lockout cap; 12-pole, separable; for sockets; Plastic; white | <a href="http://www.wago.com/770-221">www.wago.com/770-221</a> |

## Downloads

### CAD/CAE-Data

#### CAD data

| 2D/3D Models 770-885/080-000 | URL | Download |
|------------------------------|-----|----------|
|------------------------------|-----|----------|

#### PCB Design

| Symbol and Footprint 770-885/080-000 | URL | Download |
|--------------------------------------|-----|----------|
|--------------------------------------|-----|----------|

Subject to changes. Please also observe the further product documentation!



CAX data for your PCB design, consisting of "schematic symbols and PCB footprints", allow easy integration of the WAGO component into your development environment.

#### Supported formats:

- Accel EDA 14 & 15
- Altium 6 to current version
- Cadence Allegro
- DesignSpark
- Eagle Libraries
- KiCad
- Mentor Graphics BoardStation
- Mentor Graphics Design Architect
- Mentor Graphics Design Expedition 99 and 2000
- OrCAD 9.X PCB and Capture
- PADS PowerPCB 3, 3.5, 4.X, and 5.X
- PADS PowerPCB and PowerLogic 3.0
- PCAD 2000, 2001, 2002, 2004, and 2006
- Pulsonix 8.5 or newer
- STL
- 3D STEP
- TARGET 3001!
- View Logic ViewDraw
- Quadcept
- Zuken CadStar 3 and 4
- Zuken CR-5000 and CR-8000

PCB Component Libraries (EDA), PCB CAD Library Ultra Librarian

---

#### CAE data

|                              |                     |                          |
|------------------------------|---------------------|--------------------------|
| ZUKEN Portal 770-885/080-000 | <a href="#">URL</a> | <a href="#">Download</a> |
|------------------------------|---------------------|--------------------------|

---

#### Asset Administration Shell

|  |                     |                          |
|--|---------------------|--------------------------|
| Asset Administration Shell 770-885/080-000 | <a href="#">URL</a> | <a href="#">Download</a> |
|--|---------------------|--------------------------|

---

## Environmental Product Compliance

### Compliance Search

Environmental Product Compliance 770-885/080-000

Subject to changes. Please also observe the further product documentation!

---

WAGO GmbH & Co. KG  
Hansastr. 27  
32423 Minden  
Phone: +49571 887-0 | Fax: +49571 887-169  
Email: [info.de@wago.com](mailto:info.de@wago.com) | Web: [www.wago.com](http://www.wago.com)

Do you have any questions about our products?  
We are always happy to take your call at +49 (571) 887-44222.



[URL](#)

[Download](#)

Socket for PCBs; straight; 5-pole; Cod. B; pink

---

## Installation Notes

## Product family

WINSTA® MIDI

[Show all products from the family](#)

Subject to changes. Please also observe the further product documentation!

---

WAGO GmbH & Co. KG

Hansastr. 27

32423 Minden

Phone: +49571 887-0 | Fax: +49571 887-169

Email: [info.de@wago.com](mailto:info.de@wago.com) | Web: [www.wago.com](http://www.wago.com)

Do you have any questions about our products?

We are always happy to take your call at +49 (571) 887-44222.