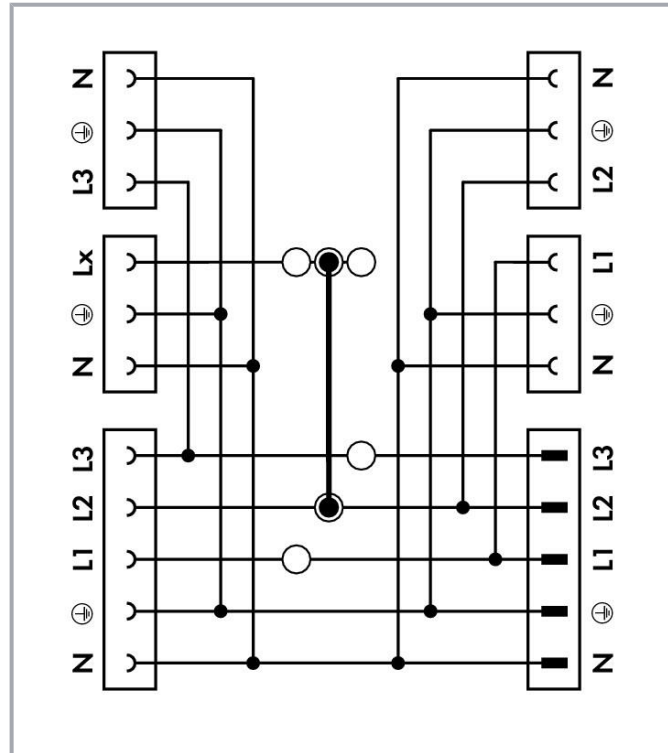
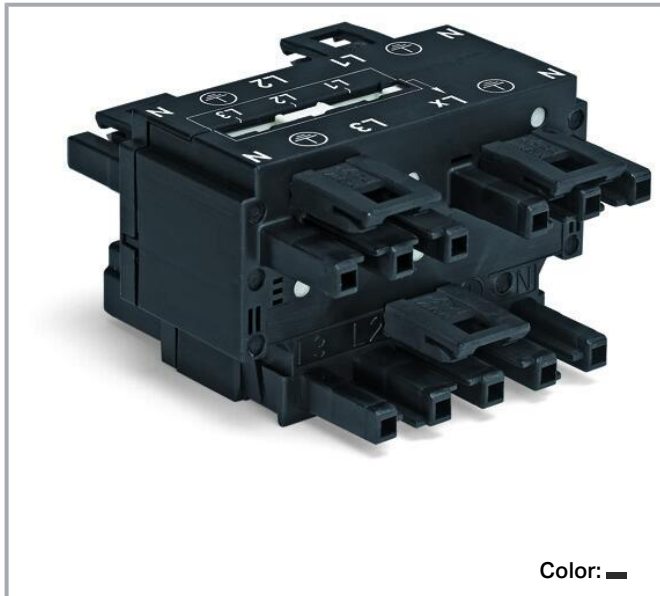


Data sheet | Item number: 770-640

Three-phase to single-phase distribution connector; with phase selection; 5-pole/3-pole; Cod. A; 1 input; 5 outputs; black

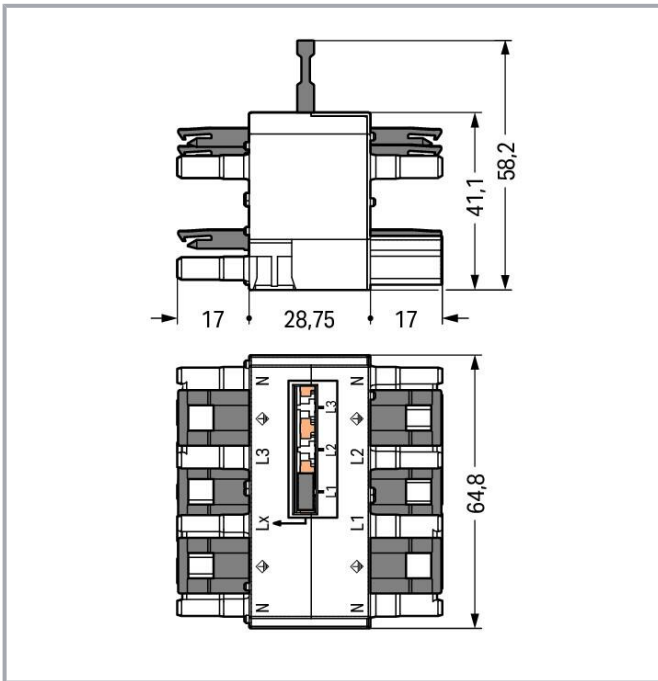
www.wago.com/770-640



Subject to changes. Please also observe the further product documentation!

WAGO GmbH & Co. KG
Hansastr. 27
32423 Minden
Phone: +49571 887-0 | Fax: +49571 887-169
Email: info.de@wago.com | Web: www.wago.com

Do you have any questions about our products?
We are always happy to take your call at +49 (571) 887-44222.



Item description

Distribution connector **WINSTA®** MIDI with protection against mismatching

Use effective pluggable connections instead of laborious screw connections: With the **WINSTA®** MIDI distribution connector with protection type IP20. On PCBs, in control cabinets or for connecting lights – pluggable installation connectors from WAGO allow you to make connections according to an enormous variety of requirements in seconds. The coding options reduce installation errors, allowing fast, secure wiring of all components. The pluggable installation connector is protected against ingress by solid objects in accordance with protection type IP20 (When mated: IP2xC (These compact connectors are not designed for use in open, easily accessible areas!)). General mains applications for almost any domain of use can be implemented with **WINSTA®** MIDI pluggable installation connectors with A coding. This pluggable installation connector can be used for a load of up to 25 A. As a result, it can also be used for high power loads. The **WINSTA®** MIDI product line guarantees total flexibility for the installation. With its Push-in CAGE CLAMP® spring pressure connection technology, it ensures time-saving, error-free installation and offers customization and flexibility for meeting an enormous variety of installation requirements.

WINSTA® MIDI solutions for your electrical installation – protected against mismatching and maintenance-free

The **WINSTA®** Pluggable Connection System allows pluggable electrical installation. This saves time, lowers costs, and reduces the need for servicing. Choose quality and durability – with protection against mismatching from WAGO makes the installation of electrical components significantly easier.

Subject to changes. Please also observe the further product documentation!



- effective protection against mismatching
- simple circuits
- with A coding for a large number of applications
- custom-engineered solutions
- convenient installation and commissioning

Data

Electrical data

Ratings per IEC/EN

Ratings per	IEC/EN 60664-1
Nominal voltage (III/3)	400 V
Rated impulse voltage (III/3)	6 kV
Rated current	25 A
Legend (ratings)	(III / 3) \triangleq Overvoltage category III / Pollution degree 3

Ratings per IEC/EN 2

Rated voltage (III/3) 2	250 V
Rated surge voltage (III/3) 2	4 kV

Ratings per UL 1977

Note for the US market	Some versions may also be used for current interruption in accordance with the UL certificate in select applications with currents below 16 A and voltages up to 600 V. For further information, please contact your local sales office.
Rated voltage (UL 1977)	600 V
Rated current UL 1977	23 A

General information

Note on contact resistance	approx. 1 m Ω of contact resistance approx. 0.25 m Ω contact transition plug/socket
----------------------------	--

Connection data

Total number of potentials	5
----------------------------	---

Subject to changes. Please also observe the further product documentation!



Connection 1

Pole number	5
-------------	---

Physical data

Pin spacing	10 mm / 0.394 inches
Width	64.8 mm / 2.551 inches
Height	58.2 mm / 2.291 inches
Depth	62.75 mm / 2.47 inches

Mechanical Data

Application	General mains applications
Coding	A
Marking	N \neq L1 L2 L3
Mating force of a plug-in connection	approx. 20 ... 70 N (depending on pole number)
Retention force of a plug-in connection	When locked: > 80 N
Unmating force of a plug-in connection	Unlocked: approx. 20 ... 70 N (depending on pole number)
Number of mating cycles	200, without resistive load
Type of distribution box	Three-phase to single-phase distribution connector
Protection type	IP20; When mated: IP2xC (These compact connectors are not designed for use in open, easily accessible areas!)

Plug-in connection

Contact type (pluggable connector)	Socket/plug
Mismating protection	Yes
Note on mismating protection	All WINSTA [®] components are 100% protected against mismating when: a.) plugging different numbers of poles b.) plugging while rotated 180 c.) plugging while laterally staggered d.) plugging one pole
Locking lever	yes
Locking of plug-in connection	locking lever
Note on locking system	All connectors for mounted installations (snap-in versions for lighting fixtures or devices, all types of PCB and distribution connectors) are factory-equipped with locking levers to ensure plugs and sockets are securely locked. Additional locking levers are only required for flying leads (plug/socket).

Subject to changes. Please also observe the further product documentation!

Number of locking levers	6
--------------------------	---

Material data

Note (material data)

Information on material specifications can be found here

Color	black
Insulation material	Polyamide (PA66)
Flammability class per UL94	V0
Contact material	Copper or copper alloy; surface-treated
Contact plating	Tin
Fire load	1.593 MJ
Weight	87.5 g

Environmental requirements

Processing temperature	-5 ... +40 °C
Continuous operating temperature	-35 ... +85 °C
Note on continuous operating temperature	Insulating parts for temperatures ≤ 105 °C

Commercial data

eCl@ss 10.0	27-44-06-03
eCl@ss 9.0	27-44-06-03
ETIM 8.0	EC002567
ETIM 7.0	EC002567
PU (SPU)	10 pcs
Packaging type	box
Country of origin	DE
GTIN	4045454530914
Customs tariff number	85366990990

Environmental Product Compliance

RoHS Compliance Status	Compliant, No Exemption
------------------------	-------------------------

Counterpart

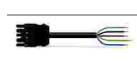


Item no. 770-105

Socket; with strain relief housing; 5-pole; Cod. A; 4,00 mm²; black

www.wago.com/770-105

Subject to changes. Please also observe the further product documentation!

**Item no. 770-113**Plug; with strain relief housing; 3-pole; Cod. A; 4,00 mm²; blackwww.wago.com/770-113**Item no. 770-115**Plug; with strain relief housing; 5-pole; Cod. A; 4,00 mm²; blackwww.wago.com/770-115**Item no. 770-205**Socket; 5-pole; Cod. A; 4,00 mm²; blackwww.wago.com/770-205**Item no. 770-213**Plug; 3-pole; Cod. A; 4,00 mm²; blackwww.wago.com/770-213**Item no. 770-213/035-000**Plug; with strain relief housing; 3-pole; Cod. A; 4,00 mm²; blackwww.wago.com/770-213/035-000**Item no. 770-215**Plug; 5-pole; Cod. A; 4,00 mm²; blackwww.wago.com/770-215**Item no. 770-305**Socket; with strain relief housing; 5-pole; Cod. A; 4,00 mm²; blackwww.wago.com/770-305**Item no. 770-315**Plug; with strain relief housing; 5-pole; Cod. A; 4,00 mm²; blackwww.wago.com/770-315**Item no. 770-405**Socket; 5-pole; Cod. A; 4,00 mm²; blackwww.wago.com/770-405**Item no. 770-415**Plug; 5-pole; Cod. A; 4,00 mm²; blackwww.wago.com/770-415**Item no. 771-9993/006-101**pre-assembled interconnecting cable; Eca; Socket/plug; 3-pole; Cod. A; H05VV-F 3G 1.5 mm²; 1 m; 1,50 mm²; blackwww.wago.com/771-9993/006-101**Item no. 771-9993/206-101**pre-assembled connecting cable; Eca; Plug/open-ended; 3-pole; Cod. A; H05VV-F 3G 1.5 mm²; 1 m; 1,50 mm²; blackwww.wago.com/771-9993/206-101**Item no. 771-9995/006-101**pre-assembled interconnecting cable; Eca; Socket/plug; 5-pole; Cod. A; H05VV-F 5G 1.5 mm²; 1 m; 1,50 mm²; blackwww.wago.com/771-9995/006-101**Item no. 771-9995/106-101**pre-assembled connecting cable; Eca; Socket/open-ended; 5-pole; Cod. A; H05VV-F 5G 1.5 mm²; 1 m; 1,50 mm²; blackwww.wago.com/771-9995/106-101**Item no. 771-9995/206-101**pre-assembled connecting cable; Eca; Plug/open-ended; 5-pole; Cod. A; H05VV-F 5G 1.5 mm²; 1 m; 1,50 mm²; blackwww.wago.com/771-9995/206-101

Optional accessories

Mounting

Mounting accessories

Subject to changes. Please also observe the further product documentation!

WAGO GmbH & Co. KG

Hansastr. 27

32423 Minden

Phone: +49571 887-0 | Fax: +49571 887-169

Email: info.de@wago.com | Web: www.wago.com

Do you have any questions about our products?

We are always happy to take your call at +49 (571) 887-44222.

**Item no.: 770-625**

Mounting plate; 5-pole; for distribution connectors; Plastic; black

www.wago.com/770-625**Item no.: 770-675**

Mounting plate; 5-pole; for distribution connectors; Plastic; white

www.wago.com/770-675**Cover**

Cover

**Item no.: 770-360**

Lockout cap; for plugs; 5-pole; separable; yellow

www.wago.com/770-360**Item no.: 770-201**

Lockout cap; 12-pole, separable; for sockets; Plastic; black

www.wago.com/770-201**Item no.: 770-221**

Lockout cap; 12-pole, separable; for sockets; Plastic; white

www.wago.com/770-221**Downloads****Documentation****Bid Text**

770-640 X81 - Datei	2019 Feb 19	xml 3.2 kB	Download
770-640 doc - Datei	2014 Dec 10	doc 23.6 kB	Download
ausschreiben.de 770-640		URL	Download

CAD/CAE-Data**CAE data**

EPLAN Data Portal 770-640	URL	Download
WSCAD Universe 770-640	URL	Download
ZUKEN Portal 770-640	URL	Download

CAD data

Subject to changes. Please also observe the further product documentation!

WAGO GmbH & Co. KG
Hansastr. 27
32423 Minden
Phone: +49571 887-0 | Fax: +49571 887-169
Email: info.de@wago.com | Web: www.wago.com

Do you have any questions about our products?
We are always happy to take your call at +49 (571) 887-44222.

2D/3D Models 770-640

[URL](#) [Download](#)

Asset Administration Shell

Asset Administration Shell 770-640 [URL](#) [Download](#)

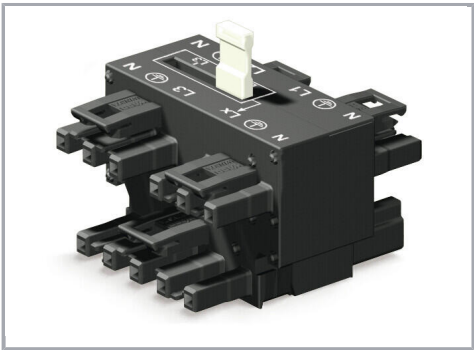
Environmental Product Compliance

Compliance Search

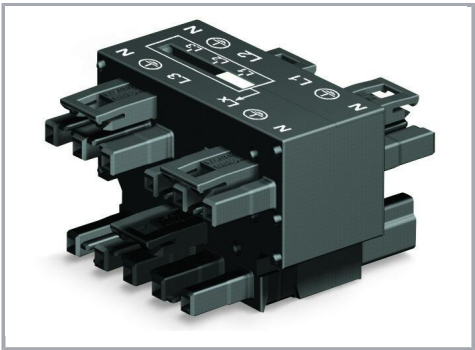
Environmental Product Compliance 770-640 [URL](#) [Download](#)

Three-phase to single-phase distribution connector; with phase selection; 5-pole/3-pole; Cod. A; 1 input; 5 outputs; black

Installation Notes

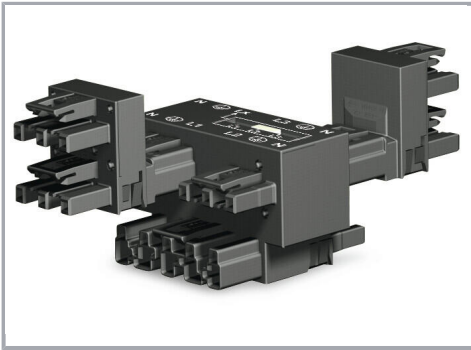


Movable jumper



Jumper pushed down, flush with the housing (position L1)

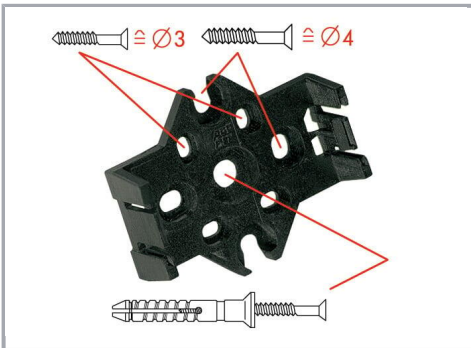
Subject to changes. Please also observe the further product documentation!



Additional h-distribution connectors double L1 and L3.

This results in the following connection option:
L1/L1/L2/L2/L3/L3 with jumper in position L2
Notice: h-distribution connectors can only be plugged on L1 and L3.

Installation



Mounting plates can be secured using commercially available screws or nail-drive anchors.

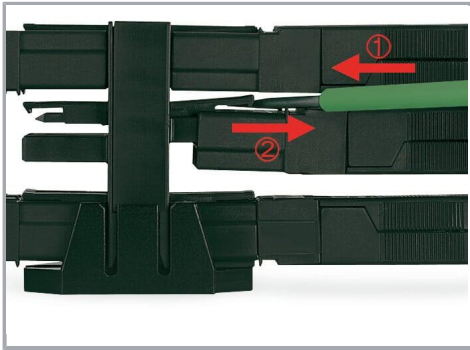


The distribution connectors snap together when attached to the mounting plate.



To release the distribution connector, unlock the latch using a screwdriver.

Subject to changes. Please also observe the further product documentation!



All distribution connector connections are locked and protected against accidental disconnection directly after mating. Locking of any connection is released using a screwdriver, even if all connections are used.

Product family

WINSTA® MIDI

[Show all products from the family](#)

Subject to changes. Please also observe the further product documentation!

WAGO GmbH & Co. KG
Hansastr. 27
32423 Minden
Phone: +49571 887-0 | Fax: +49571 887-169
Email: info.de@wago.com | Web: www.wago.com

Do you have any questions about our products?
We are always happy to take your call at +49 (571) 887-44222.