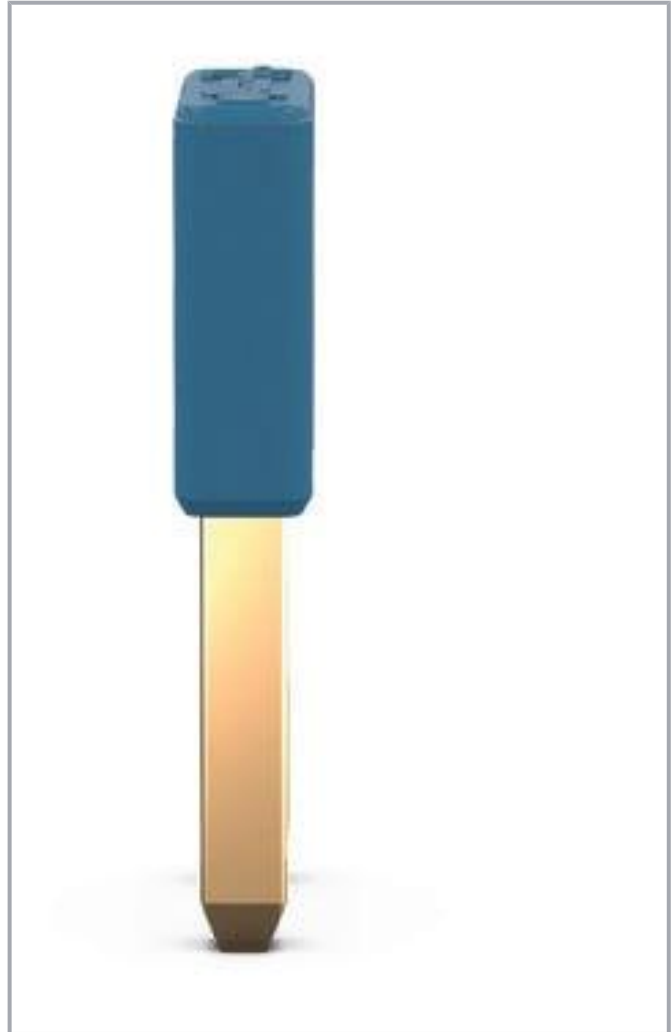


Data sheet | Item number: 221-942/000-006

Jumper; for conductor entry; 2-way; insulated; blue

www.wago.com/221-942/000-006



Data

Electrical data

Subject to changes. Please also observe the further product documentation!

WAGO GmbH & Co. KG
Hansastr. 27
32423 Minden
Phone: +49571 887-0 | Fax: +49571 887-169
Email: info.de@wago.com | Web: www.wago.com

Do you have any questions about our products?
We are always happy to take your call at +49 (571) 887-44222.



Ratings per IEC/EN

Nominal voltage (III/3)	400 V
Rated current	41 A

Physical data

Jumper assignment	1-2
-------------------	-----

Material data

Note (material data)	Information on material specifications can be found here
Color	blue
Insulation material	Polyamide (PA66)
Weight of insulation material	0.28 g
Weight	2.7 g

Environmental requirements

Continuous operating temperature	-60 ... +105 °C
----------------------------------	-----------------

Commercial data

ETIM 8.0	EC000489
ETIM 7.0	EC000489
PU (SPU)	5 pcs
Packaging type	bag
Country of origin	CN
GTIN	4055144068115
Customs tariff number	85366990990

Environmental Product Compliance

RoHS Compliance Status	Compliant, No Exemption
------------------------	-------------------------

Downloads

Documentation

Bid Text

Subject to changes. Please also observe the further product documentation!

WAGO GmbH & Co. KG
Hansastr. 27
32423 Minden
Phone: +49571 887-0 | Fax: +49571 887-169
Email: info.de@wago.com | Web: www.wago.com

Do you have any questions about our products?
We are always happy to take your call at +49 (571) 887-44222.



221-942/000-006	xml	Download
X81 - Datei	3.0 kB	
221-942/000-006	docx	Download
doc - Datei	24.5 kB	
Additional Information	pdf	Download
	2.3 MB	

CAD/CAE-Data

CAD data

2D/3D Models 221-942/000-006	URL	Download
Asset Administration Shell		
Asset Administration Shell 221-942/000-006	URL	Download

Environmental Product Compliance

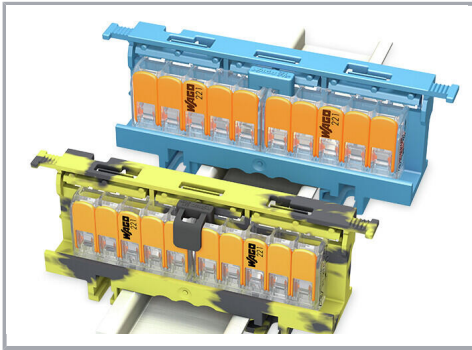
Compliance Search

Environmental Product Compliance 221-942/000-006	URL	Download
Jumper; for conductor entry; 2-way; insulated; blue		

Installation Notes

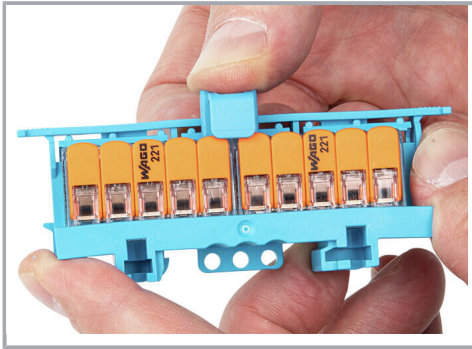
Commoning

Subject to changes. Please also observe the further product documentation!



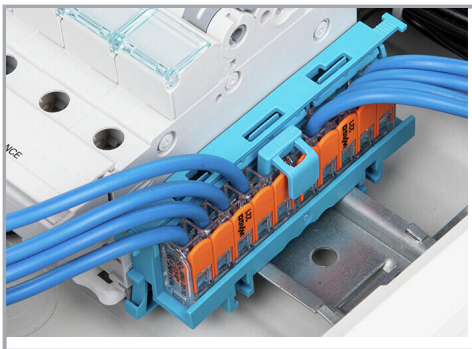
Extending the N and PE (ground) distribution
via jumper

Commoning



Insert the jumper with a locking function into
closed clamping units.

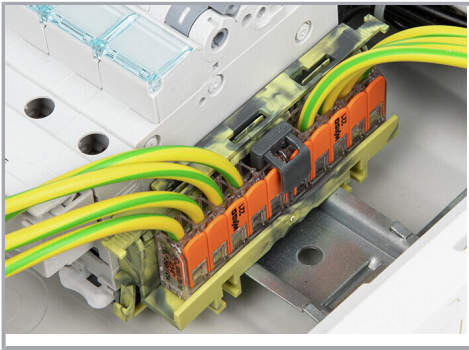
Commoning



With a locking function:
The lockable jumper is plugged into the
splicing connectors.

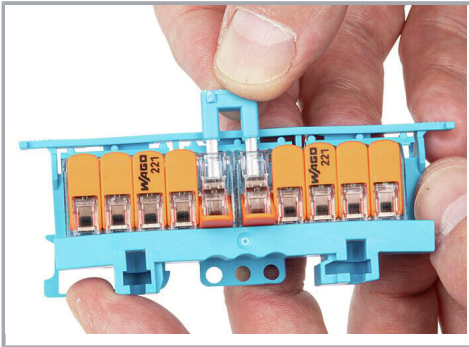
Commoning

Subject to changes. Please also observe the further product documentation!



The lockable jumper is plugged into the splicing connectors.

Commoning



Remove the jumper from open clamping units.

Subject to changes. Please also observe the further product documentation!