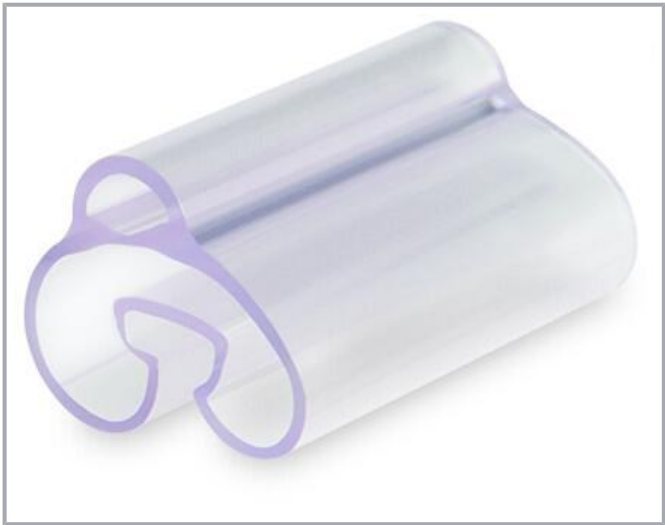


Data sheet | Item number: 211-926

Nozzles; Length: 23 mm; For the use of 211-821; halogenated; Cable outer diameter: 10.0 ... 14.0 mm; transparent

www.wago.com/211-926



Data

Technical data

Suitable	for wire diameter 10 ... 14 mm
Delivery form	Component
Properties	for one 211-821 marker
Printing device	Smart Printer (Thermal Transfer Printer)

Physical data

Length	23 mm
Sheathed cable diameter	10 ... 14 mm

Mechanical Data

Mounting type	Sliding on conductor
---------------	----------------------

Material data

Color	transparent
Material	Polyvinyl chloride
Adhesive information	without adhesive

Subject to changes. Please also observe the further product documentation!

WAGO GmbH & Co. KG
Hansastr. 27
32423 Minden
Phone: +49571 887-0 | Fax: +49571 887-169
Email: info.de@wago.com | Web: www.wago.com

Do you have any questions about our products?
We are always happy to take your call at +49 (571) 887-44222.



Halogen-free	No
Weight	1.4 g

Environmental requirements

Ambient temperature (storage)	+5 ... +40 °C
Ambient temperature (operation)	-15 ... +70 °C
Relative humidity	40 ... 80 %

Commercial data


eCl@ss 10.0	27-40-04-01
eCl@ss 9.0	27-40-04-01
ETIM 8.0	EC001530
ETIM 7.0	EC001530
PU (SPU)	200 pcs
Packaging type	bag
Country of origin	IT
GTIN	4055143381208
Customs tariff number	39269097900

Environmental Product Compliance

RoHS Compliance Status	Compliant, No Exemption
------------------------	-------------------------

Required accessories

Marking accessories

Marker	
	<p>Item no.: 211-821</p> <p>Marker; for Smart Printer; for use in nozzles; Length: 23 mm; white</p> <p>www.wago.com/211-821</p>

Downloads

Environmental Product Compliance

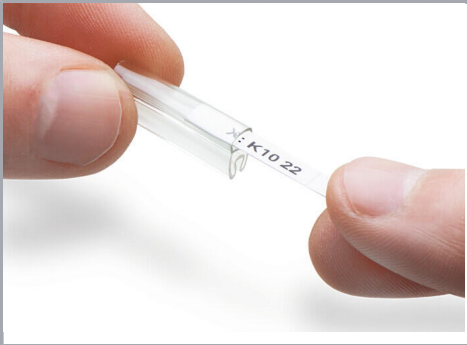
Compliance Search

Environmental Product Compliance 211-926	URL	Download
Nozzles; Length: 23 mm; For the use of 211-821; halogenated; Cable outer diameter: 10.0 ... 14.0 mm; transparent		

Subject to changes. Please also observe the further product documentation!

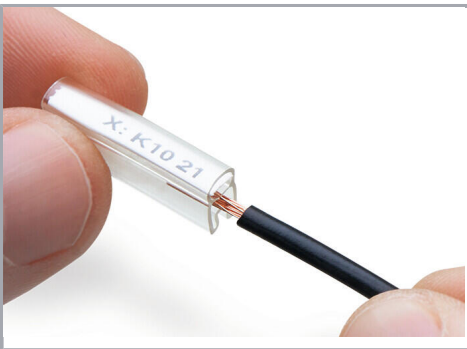
Installation Notes

Application



Slide the marker into the marking sleeve receptacle. Replacing the marker is also possible after the conductor has been terminated.

Application



Compress the sleeve and slide it onto the conductor to be marked.

Subject to changes. Please also observe the further product documentation!