

Industrial SD Card

ISDD33K



The ADATA ISDD33K industrial-grade SD card implements 3D TLC Flash and sports a 3K P/E cycle rating for great durability and high capacity. In addition, it also meets the V10 (Video Speed Class) standard for high-quality recording. For excellent data integrity, the ISDD33K supports LDPC ECC (Error Correcting Code) and Wear Leveling technologies. The ISDD33K is highly reliable and compatible as well as power efficient, and is ideally suited for applications such as industrial automation, surveillance, POS, healthcare and more.

Features

- Compliant with SD 6.1 specifications
- 3K P/E Cycles – improved endurance and reliability
- Meets V10 (Video Speed Class) standard
- LDPC ECC Technology
- Supports Wear Leveling, Garbage Collection and Bad Block Management
- Suitable for automation, surveillance, healthcare, POS, in-vehicle, and handheld devices

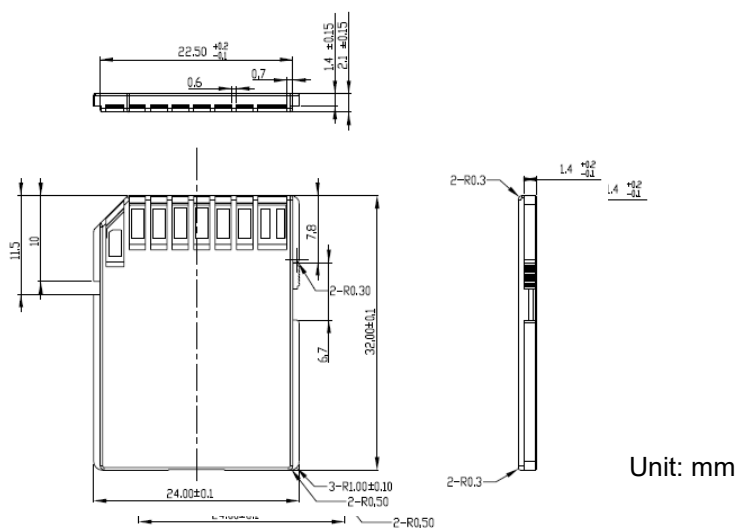
Ordering Information

| Operating Temp. | 32GB | 64GB | 128GB | 256GB |
|-----------------|---------------|---------------|---------------|---------------|
| -25°C to 85°C | ISDD33K-032GR | ISDD33K-064GR | ISDD33K-128GR | ISDD33K-256GR |

Specifications

| Model | ISDD33K |
|----------------------------------|--|
| Form Factor | SD |
| Capacity | 32GB – 256GB |
| Interface | SD 6.1 |
| Flash Type | 96L 3D TLC |
| Dimensions (L x W x H) | 32 x 24 x 2.1mm |
| Sequential Read (Max.) | 95MB/s |
| Sequential Write (Max.) | 85MB/s |
| Speed Class | UHS Speed : Class 1/ Speed Class : Class 10/ Video Speed Class : V10 |
| Operating Temperature (Standard) | -25°C to 85°C |
| Operating Voltage | DC 2.7V – 3.6V |
| Power Consumption (Max) | 0.53W |
| Shock Resistance | 1500G/0.5ms, Half Sine Wave |
| Operating Humidity | 5%-95% RH, non-condensing |
| Vibration Resistance | 20G (20-2000Hz) |
| Technologies | LDPC ECC, Wear Leveling, Garbage Collection, Bad Block Management |

Diagram



Contact Us

HQ (Taiwan):

T: +886-8228-0886

E: adata@adata.com

US:

T: +1-714-332-8708

E: IASales_us@adata.com

EU:

T: +49-899-0405-296

E: IASales_eu@adata.com

China

T: +86-21-6233-1010

E: IASales_cn@adata.com

JP:

T: +81-3-5807-0011

E: IASales_jp@adata.com

APAC/MEA:

E: IASales_apacmea@adata.com