

乐清市朗森电气有限公司

NO. : PS2726

产品规格承认书

PRODUCT SPECIFICATION

	顾客Client:	供应商: 朗森电气
产品型号: Product Type:		50033系列
产品名称: Product Name:		50033- (N) AW-2
产品编码: Part Number	/	
版本号: Version Number:	A/0	B/0

内部确认

制定 Edit	周莉	审核 Check	胡兴翠	批准 Approval	刘兵
------------	----	-------------	-----	----------------	----

客户确认

采购部 Stocks		工程部 Eng.Dept		品质部 Q.C.Dept	
---------------	--	-----------------	--	-----------------	--

乐清市朗森电气有限公司

电话 (TEL) : 0577-61388804

传真 (FAX) : 0577-61388801

E-mail: L3ls@foxmail.com <http://www.3ls.com.cn>

地址: 浙江省乐清市城东街道永兴二路3号

ADD: Zhejiang yueqing city east street yongxing 2 no. 3

乐清市朗森电气有限公司

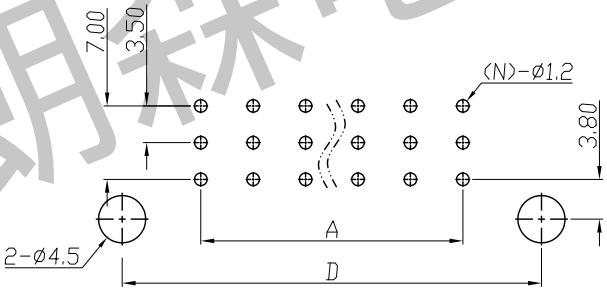
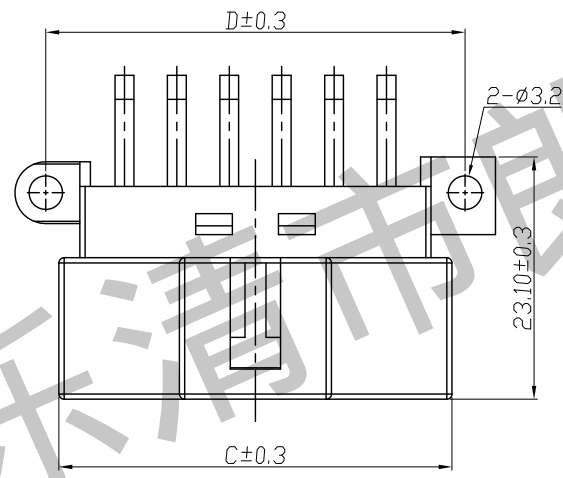
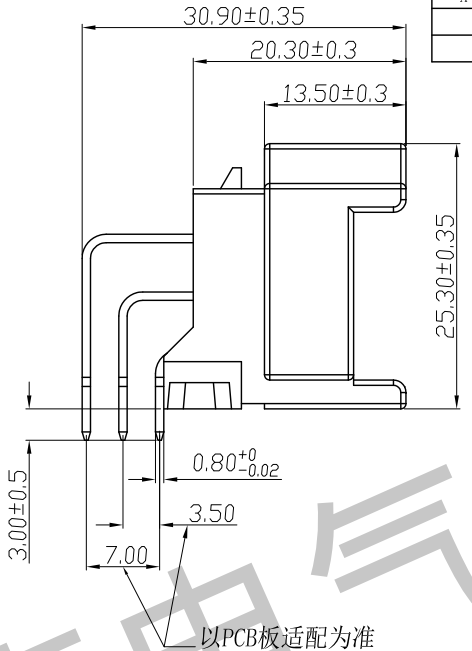
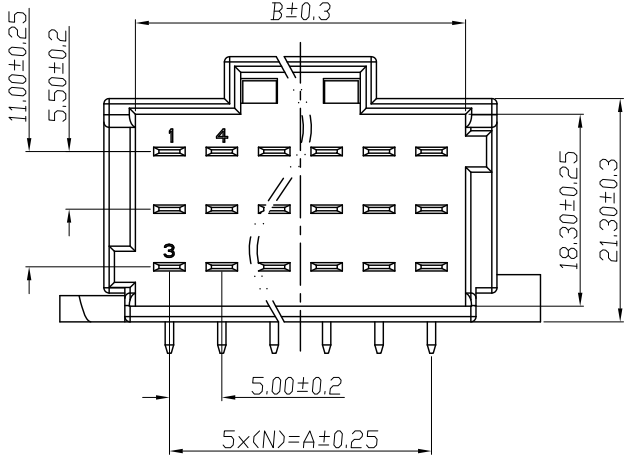
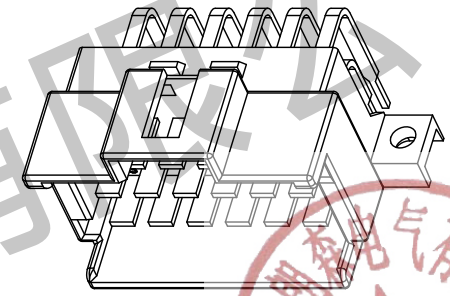
CONTENT

封面	The Cover	1
目次	To Discuss	2
0 更改记录	HISTORY RECORD	3
1 产品简图	Outline drawing	3
1.1 材质报告	Material report	3
1.2 物料明细表	BOM	3
2 总体要求	General	4
2.1 功能描述	Functional description	4
2.2 安装位置	Mounting location	4
2.3 温度范围	Ambient temperature range	4
2.4 电压范围	Voltage range	4
3 默认测试条件	Default test conditions	4
4 产品性能	Performance	4
项目		4
Item		4
4.1 外观	Appearance	4
4.2 电压降	Voltage Drop	4
4.3 接触电阻	Contact resistance	5
4.4 绝缘电阻	Insulation resistance	5
4.5 耐电压	Withstand voltage	5
4.6 漏电流	Current leakage	5
4.7 可焊性	Solder ability	6
4.8 耐焊接热	Resistance to solder heat	5
4.9 耐高温性	High Temperature Test	5
4.10 耐低温性	Low temperature testing	6
4.11 温度循环	Temperature Cycling	7
4.12 恒定湿热	Humidity heat, Constant	7
4.13 盐雾	Salt spray	7
4.14 随机振动	Random vibration	8
5. 包装 运输 贮存	Packaging Transportation Storage	9
6、修订	Revise	9

1 2 3 4 5 6 7 8 9

REV	Change number	DESCRIPTION	DATE	DRAWN
A	/	initial version	2022.6.20	Zhou Li

Technical Features:
 1. No. of Positions: (N)P;
 2. The Mating Female Housing P/N: 50033-(N)Y-2;
 3. Current Rating: 20A;
 4. Temperature Range: -40°C to 125°C.



PCB LAYOUT

Lines	Type	A	B	C	D
1	50033-9AW-2	10	16.6	22.5	25
2	50033-15AW-2	20	26.6	32.5	35
3	50033-18AW-2	25	31.6	37.5	40

50033-(N)AW-2	本松 PBT	BRASS	BLACK	POST-TIN
PART NUMBER	MATERIAL		COLOR	FINISH

乐清市朗森电气有限公司
 Yueqing Longsun Electric Co., Ltd

GENERAL TOLERANCE		DESIGN:ShanXianJu	DATE: 2018.4.26
X.* ± 3.0°	X. ± 0.35	CHECKED:HuXingCui	DATE: 2018.4.26
.X* ± 2.0°	.X ± 0.3	AUDITED:LiuBing	DATE: 2018.4.26
.XX* ± 1.0°	.XX ± 0.25		
.XXX* ± 0.5°	.XXX ± 0.2		

PART P/N.		TITLE.	
50033-(N)AW-2		OEM Series PCB Header (H-Type)	
UNIT. mm	SCALE. 1:1	PAGE. 1/1	



1 2 3 4 5 6 7 8 9

BASEN[®] T180G6 HW BK

DC-T100010/B

Description(产品说明)	Modified polybutylene terephthalate/polyethylene terephthalate, reinforced with 30% glass fiber, no flame retardant, complying with RoHS standard, for injection molding. 改性PBT/PET材料, 玻纤增强30%, 不阻燃, 满足RoHS环保要求, 注塑级产品。
--------------------------	--

Applications(主要应用)	The product offers high dimensional stability, low warpage, good appearance with high gloss and excellent chemical resistance. It is mainly used in household appliances, automotive etc. such as covers and housings etc. The product is available in nature, and in colors on request. 该产品尺寸稳定性好, 低翘曲, 外观良好光泽度高, 耐化学性能优异。主要应用于家用电器和汽车领域, 如盖板以及壳体等, 主要应用于家用电器, 汽车领域。如盖板以及壳体等。 该产品为本色材料, 也可根据需求进行调色。
---------------------------	---

Property (检测项目)	Test Condition (测试条件)	Standard (引用标准)	Unit (单位)	Typical Value (典型数据) DAM(干态)
-----------------	--------------------------	--------------------	--------------	------------------------------------

Physical properties (物理属性)

Density(密度)	23°C	ISO 1183-1	g/cm ³	1.56
Water absorption(吸水质量分数)	23°C, 泡水, 24H	ISO 62	%	0.1

Rheological properties (流变性能)

★注: 表中所提供的收缩率数值是根据国际标准收缩率片测得, 我们保证数据的真实性。但不同产品模具结构差异较大, 实际开模收缩率与表中提供的收缩率数据可能存在较大的差异, 如需准确的开模收缩率数据, 请联系我司相关人员。

Moulding shrinkage(模塑收缩率)	60×60×2mm(料温260°C, 模温80°C)	ISO 294-4	%	-
Parallel shrinkage(平行收缩率)	23°C, 50%RH, 24H	ISO 294-4	%	0.10-0.30
Transverse shrinkage(垂直收缩率)	23°C, 50%RH, 24H	ISO 294-4	%	0.50-0.80

Mechanical properties (机械性能), 23°C, 50%RH

Charpy unnotched impact strength(简支梁无缺口冲击强度)	23°C, 4J	ISO 179-1	kJ/m ²	50
Charpy notched impact strength(简支梁缺口冲击强度)	23°C, 1J	ISO 179-1	kJ/m ²	8.5
Tensile strength(拉伸强度)	2mm/min	ISO 527-1	MPa	150
Tensile strain at break(拉伸断裂应变)	2mm/min	ISO 527-1	%	2.5
Flexural strength(弯曲强度)	2mm/min	ISO 178	MPa	200
Flexural modulus(弯曲模量)	2mm/min	ISO 178	MPa	8200

Thermal properties (热性能)

Heat deflection temperature(负荷变形温度)	1.8Mpa	ISO 75-1	°C	195
Melting temperature(熔融峰温)	DSC, 10°C/min	ISO 11357-3	°C	222

Flammability (阻燃性能)

Flammability UL94(垂直燃烧)	2.0mm	UL 94	class	HB
Glow-wire flammability index(灼热丝可燃性指数)	2.0mm	IEC 60695-2-12	°C	700

Electrical properties (电性能)

Comparative tracking index(相比电痕化指数)	3mm, Solution A	IEC 60112	V	500
Dry Volume resistivity(体积电阻率)	Φ100×3mm	IEC 60693	Ω·m	1.00E+14
Dry surface resistivity(表面电阻率)	Φ100×3mm	IEC 60693	Ω	1.00E+15

Processing (推荐加工工艺)

★注：以下加工参数仅供参考，可根据不同机型、不同模具以及产品要求，对加工工艺做适当调整。

Injection(注塑)	Unit(单位)	Range(范围)
Processing moisture content (加工水分要求)	%	≤0.05
Drying temperature (干燥温度)	°C	120~140
Drying time (干燥时间)	h	4~6
Nozzle temperature (喷嘴温度)	°C	245~265
Front Temperature of screw (螺杆前段温度)	°C	245~265
Middle Temperature of screw (螺杆中段温度)	°C	240~260
Rear Temperature of screw (螺杆后段温度)	°C	240~260
Mold temperature (模具温度)	°C	60~100

Declaration:

[1] The information submitted herein is authentic. It is based on our current knowledge and experience, and on the tests and experiments carried out in our laboratories.

[2] The data herein is typical and not to be construed as specifications. In view of the many factors that may affect processing and application, this information is intended to be used only as a guideline for product engineer. Observation on a "trial and error" basis may be required to achieve desired results.

[3] Pigments can affect properties, so unless otherwise specified, all data listed is for natural colored materials.

[4] The information will be updated along with accumulating of our knowledge and experience, please visit our website or contract us timely to get the latest version.

说明:

[1] 此处提供的信息是基于我们当时的知识和经验，通过在我们的试验室进行测试和试验所获得，我们可以保证信息的真实性。

[2] 此份物性表提供的数据仅代表产品的典型值，不作为材料的技术证明。由于材料加工和测试时的人、机、料、法、环等因素会影响材料的判断和应用，因此此信息仅为工程师选材或加工时提供参考，为了达到贵公司的预期效果，需要进行试验。

[3] 颜料可能会影响产品的性能，因此，除非另有规定，物性表中的数据代表的是本色材料的性能。

[4] 随着我们知识和经验的积累，物性表中的信息将会不断更新，为了获得最新版本的物性表，请及时登录我们的网站或直接联系我们。

乐清市朗森电气有限公司

0 更改记录 HISTORY RECORD

序号 No.:	版本号 Version Number	更改前描述 Description Before Modification	更改后描述 Description After Modification	批准 Approval	日期 Date
1	A/0	首次发放 Original release	/		
2					
3					
4					
5					
6					

1 产品简图 Outline drawing (附页)

1.1 物料明细表 BOM

7				
6				
5				
4	BCL50033W4291	铜针	N	高精黄铜
3	BCL50033W3421	铜针	N	高精黄铜
2	BCL50033W2551	铜针	N	高精黄铜
1	C025003300020	基座	1	本松 PBT
序号 Item	物料号 Part Number	物料名称 Product Name	数量 Quantity	备注 Mark

乐清市朗森电气有限公司

2 总体要求 General

2.1 功能描述 Functional description

本产品主要用于：线板端连接

2.2 安装位置 Mounting location

本产品安装在位置：电气系统

2.3 温度范围 Temperature range

工作温度 Operating temperature : $-40^{\circ}\text{C} \sim +125^{\circ}\text{C}$

2.4 电压范围 Voltage range

产品的标称电压 rated voltage: 28V DC;

3 默认测试条件 Default test conditions

在具体试验方法中如无其他规定，试验样品应先在下述条件下放置24h后，然后再进行试验，样品的预处理条件和默认试验条件如下：环境温度： $(18 \sim 28)^{\circ}\text{C}$ 空气相对湿度：45%~75% 大气压力：86kPa~106kPa

In the absence of any other provision in the specific test method, the test sample shall be placed for 24h under the following conditions before being tested, Sample pretreatment conditions and the default test conditions are as follows: Ambient temperature: $(18 \sim 28)^{\circ}\text{C}$

Relative humidity: 45%~75% Atmospheric pressure: 86kPa~106kPa

4 产品性能 Performance

项目 Item	测试设备 Equipment	测试条件和方法 Condition & Method	规格要求 Requirement
4.1 外观 Appearance	照相机、摄像机、放大镜等放大设备（如需要） Camera, Video Recorder, Magnification Apparatus (as required)	目视检查 视力：1.0 以上 照明：(200~300) lx 目测距离：(0.3~0.5) m Visual examination vision: > 1.0, at normal strength of vision and color perception. illumination: (200~300) lx viewing distance: (0.3~0.5) m	1.塑料件表面应无明显疤痕、凹陷、开裂及影响使用的变形。 2.标志、其它零部件外观符合相应规范。 3.金属件表面无锈蚀、氧化、无明显的机械损伤等缺陷。 1. Plastic part: smooth and flat surface without discolor, broken, crack, distortion defects is acceptable. 2. The contact crimp, identification, other component shall be checked against the relevant specification. 3. Metal part: bright and even surface without rust, oxide, fog and obvious physical damage defects is acceptable.
4.2 电压降 Voltage Drop	万用表、恒流源、欧姆表 Current-temperature tester, multimeter Ohmmeter	对配后通过最大3A的电流持续30分钟 Mated connectors, measure by dry current of 2A maximum 30min.	$\leq 10\text{mV/A}$

乐清市朗森电气有限公司

<p>4.3接触电阻 Contact resistance</p>	<p>毫欧姆电阻分选仪 Ohmmeter</p>	<p>插配阴阳连接器后,用小功率电路进行测试(干电路:开路电压是 20mV,最大电流是 10 mA) Carefully mate the contact pair (male contact, female contact) to the appropriate depth under low energy (Dry circuit: 20mV open circuit voltage and 10 mA current limit.)</p>	<p>接触电阻$\leq 0.02 \Omega$ Contact resistance: $\leq 0.02 \Omega$</p>
<p>4.4 绝缘电阻 Insulation resistance</p>	<p>绝缘电阻表或绝缘电阻测试仪 Insulation resistance tester</p>	<p>在连接器的相邻插针或与地线之间,用500V DC 的电压进行测试,时间:1分钟. Apply 500V DC between the adjacent contacts and ground in the connectors for 1 Min.</p>	<p>线束插接器的接触件间的绝缘电阻应至少为100MΩ insulation resistance for desiccation bound: 100MΩ;</p>
<p>4.5耐电压 Withstand voltage</p>	<p>恒压源 Constant voltage tester</p>	<p>用有效值1000 V 的交流电压(50 Hz)通过所有连接在一起的插接件和装着护套的插接件保持1 min,要求45%~75%的相对湿度。 Apply 1000V AC(RMS),50Hz for 1 minute between adjacent terminals</p>	<p>不能有电介质断裂或击穿现象 No dielectric crack or breakdown shall occur</p>
<p>4.6 漏电流 Current leakage</p>	<p>恒压源, 万用表 Constant voltage tester, multimeter</p>	<p>在连接器的相邻插针或与地线之间,用500V (50Hz) 的电压进行测试,时间:1分钟。 Apply 500V (50Hz) between the adjacent contacts and ground in the connectors for 1 Min..</p>	<p>1mA Max</p>
<p>4.8耐焊接热 Resistance to solder heat</p>	<p>焊槽 Solder pot</p>	<p>把试验样品需要焊接的部位浸入焊锡炉中{锡炉温度(260\pm5)$^{\circ}$C}, (10\pm1) s后,在正常条件下恢复1h。 Soldering Time: (10\pm1) s Solder Temperature: (260\pm5)$^{\circ}$C The dipped part shall be allowed to cool in air for 1h.</p>	<p>应能经受焊接热试验的影响,而无由于试验造成的损伤。 Any evidence of mechanical damage shall be considered a failure.</p>
<p>4.9耐高温性 High Temperature Test</p>	<p>高温试验箱 Temperature chamber capable of maintaining the specified temperature conditions</p>	<p>将试样放在125$^{\circ}$C的高温箱内,温度偏差为$\pm 2^{\circ}$C,时间为4h,再在常温下放置24h后检查。 Place the test samples in a test chamber and leave them there at the temperature 125$^{\circ}$C $\pm 2^{\circ}$C for 4 h. The sample shall be allowed to cool in air for 24 h.</p>	<p>试验后进行检查外观无损伤,测量接触电阻$\leq 0.02 \Omega$,绝缘电阻$\geq 100M \Omega$。 The sample shall fulfill visual examination, contact resistance $\leq 0.02 \Omega$, and insulation resistance $\geq 100M \Omega$ after high temperature exposure. Failure of any specified measurement, or evidence of mechanical damage shall be considered a failure.</p>

乐清市朗森电气有限公司

<p>4.7可焊性 Solder ability</p>	<p>焊槽 Solder pot</p>	<p>在可焊性试验之前应进行老化试验。 蒸汽老化试验在蒸汽中 4 小时。在每次试验之前应首先用一块合适的材料把熔融焊料的表面刮的清洁光亮，试验应在刮后立即进行。在试验室温度下，首先将被试验的引出端浸渍到焊剂中。然后立即将引出端以纵轴线方向浸渍到焊槽中去，焊槽中焊料的温度为 $(260 \pm 5) ^\circ\text{C}$。引出端的浸渍点与槽壁之间的距离不应小于 10mm。浸渍速度为 $(25 \pm 2.5) \text{ mm/min}$。引出端在槽内保持浸渍状态的时间应为 $(2.0 \pm 0.5) \text{ s}$。然后试验样品以 $(25 \pm 2.5) \text{ mm/min}$ 的速度取出。</p> <p>Prior to flux application and subsequent solder dip, all devices shall be subjected to aging by exposure to steam in a steam chamber for 4h. Contacts shall be immersed in flux, to the minimum depth necessary to effectively cover the surface to be tested. The dross shall be skimmed from the surface of the molten solder. The molten solder shall be maintained at a uniform temperature of $(235 \pm 5) ^\circ\text{C}$. The surface of the molten solder shall be skimmed just prior to immersing the leads in the solder. The part shall be immersed once in the molten solder to the depth, and in the same manner. The immersion and emersion rates shall be $(25 \pm 2.5) \text{ mm/min}$ and the dwell time shall be $(2.0 \pm 0.5) \text{ s}$. The dipped part shall be allowed to cool in air.</p>	<p>进行外观检查，借助肉眼或 4~10 倍的放大镜来检查。浸渍过的表面必须覆盖上一层光滑明亮的焊料层，只允许有少量分散的诸如针孔不润湿或弱润湿区域之类的缺陷，且这缺陷不应集中在一块。 上锡率 $\geq 90\%$。</p> <p>The part shall be visually examined using 4X to 10X magnification. The tested areas shall be essentially bright and smooth with no imperfections. The remaining may contain scattered imperfections such as pin holes, rough spots, or dewetted areas. These imperfections shall not be concentrated in one area. 90% of immersed area must show no voids, pin holes</p>
<p>4.10耐低温性 Low temperature testing</p>	<p>低温试验箱 Temperature chamber capable of maintaining the specified temperature conditions</p>	<p>将试样放在 -40°C 的低温箱内，温度偏差为 $\pm 2^\circ\text{C}$，时间为 4h，再在常温下放置 24h 后检查。 Place the test sample in a test chamber and leave them there at the temperature $-40^\circ\text{C} \pm 2^\circ\text{C}$ for 4 h. The sample shall be allowed to cool in air for 24 h.</p>	<p>试验后进行检查外观无损伤，测量接触电阻 $\leq 0.02 \Omega$，绝缘电阻 $\geq 100\text{M}\Omega$。 The sample shall fulfill visual examination, contact resistance $\leq 0.02 \Omega$, and insulation resistance $\geq 100\text{M}\Omega$ after high temperature exposure. Failure of any specified measurement, or evidence of mechanical damage shall be considered a failure.</p>

乐清市朗森电气有限公司

<p>4.11 温度循环 Temperature Cycling</p>	<p>高低温交变试验箱 temperature chamber capable of changing from one temperature extreme to the other within the specified transition time</p>	<p>把试验样品分别放入高低温交变试验箱中，按下列步骤调试温度： a 在 $(-40 \pm 2)^\circ\text{C}$ 的恒温下放置 2h； b 在 $(125 \pm 2)^\circ\text{C}$ 的恒温下放置 2h； 温度之间的转换时间不超过 180s，a 到 b 为一个循环周期，至少进行 5 个循环。 Procedure: a) $(-40 \pm 2)^\circ\text{C}$ 2h b) $(125 \pm 2)^\circ\text{C}$ 2h the time of temperature change could not more than 180 s. After finishing not less than 5 cycles, condition prior to testing</p>	<p>试验后进行检查外观无损伤，测量接触电阻 $\leq 0.02 \Omega$，绝缘电阻 $\geq 100\text{M}\Omega$。 The sample shall fulfill visual examination, contact resistance $\leq 0.02 \Omega$, and insulation resistance $\geq 100\text{M}\Omega$ after high temperature exposure. Failure of any specified measurement, or evidence of mechanical damage shall be considered a failure.</p>
<p>4.12 恒定湿热 Humidity heat, Constant</p>	<p>高低温交变湿热试验箱 Temperature- Humidity chamber capable of maintaining the specified condition on a continuous basis.</p>	<p>把试验样品（线束插接器不插合）放入高低温交变湿热试验箱中，将温度升到 $(30 \pm 2)^\circ\text{C}$，待平衡后保温 1h，然后放入水汽，在 1h 内使温度达到 $(30 \pm 2)^\circ\text{C}$，相对湿度达到 $(93 \pm \frac{+2}{-3})\%$，搁置 96h 后取出试验样品，在常温下恢复 24h 后检查。 Place the test samples in the chamber (shall not match the contact pair). Raise the temperature to the $(30 \pm 2)^\circ\text{C}$. During the temperature transition, the humidity need not be controlled. Then raise the humidity to $(93 \pm \frac{+2}{-3})\%$ within 1h. Hold the test samples to $(30 \pm 2)^\circ\text{C}$ at $(93 \pm \frac{+2}{-3})\%$ RH for 96h. The sample shall be allowed to cool in air for 24 h</p>	<p>试验后进行检查外观无损伤，测量接触电阻 $\leq 0.02 \Omega$，绝缘电阻 $\geq 100\text{M}\Omega$。 The sample shall fulfill visual examination, contact resistance $\leq 0.02 \Omega$, and insulation resistance $\geq 100\text{M}\Omega$ after high temperature exposure. Failure of any specified measurement, or evidence of mechanical damage shall be considered a failure.</p>

乐清市朗森电气有限公司

4.13 盐雾 Salt spray	盐雾试验箱 Salt spray chamber	<p>把试验样品从试验箱顶悬挂下来（平板试验样品需使受试面与垂直方向成 30°角），采用浓度为(5±0.1)%（质量百分比）的氯化钠溶液，PH 值在 6.5~7.2 之间；温度(35±2) °C；连续雾化 24h, 试验后用流动的蒸馏水轻轻洗去表面沉积物。在常温常湿条件下恢复(1~2) h 后检查试验样品。</p> <p>The salt solution concentration shall be 5%. The 5% solution shall be prepared by dissolving 5 ± 1 parts by weight of salt in 95 parts by weight of distilled or other water. Apply it to mated connectors fitted with the full complement of contacts and cables connected. The duration of the test shall be 24h. The pH shall be maintained between 6.5 and 7.2. The test shall be conducted with a temperature in the exposure zone that is maintained at (35±2) °C. Salt deposits shall be removed by a gentle wash or a dip in running water and a light brushing. The sample shall resume at room temperature for 1~2h.</p>	<p>外观检查。试验后，五金件应无露出底金属的严重锈蚀。（使用预镀好的型材，其落料面允许有不影响其性能的轻微腐蚀。）</p> <p>Visual examination The following appearance shall not be allowed: Exposure of base metals, pitting and porosity of finishes. Cracking and delaminating of components or finishes, or both.</p>
--------------------	-----------------------------	--	--

项目	测试设备	测试条件和方法	规格要求
4.14 随机振动 Random vibration	振动试验台 Vibration tester	<p>对配件在三个互相垂直轴的每个轴向施加 8 小时的振动</p> <p>The mated connectors shall vibrated in each of three mutually perpendicular planes for the period of 8h in each plane</p>	<p>瞬断要求：不允许连接电阻 ≥100.0Ω， 瞬断时间 ≥1μs Testing: Discontinuity (when R>100ohm) 1 us max;</p>
			<p>试验后：接触电阻 ≤20mΩ After test: Contact resistance: 20 mΩ max</p>
			<p>试验后：电压降 ≤10mV/A After test: Voltage drop ≤10 mV/A</p>
			<p>试验后：绝缘电阻 ≥20MΩ After test: Insulation resistance: 20Mohm max</p>
			<p>外观：无退化，裂缝，残缺，镀层过度，磨损等 Appearance: No deterioration, cracks, deformities, excessive plating wear, etc.</p>

5. 包装 运输 贮存 Packaging Transportation Storage

5.1. 包装 Packaging

塑胶件包装为吸塑盒，端子内包装为盘装带料包装，装（贴）入合格证，注明产品名称、规格型号、数量生产日期。

乐清市朗森电气有限公司

- (1) Pieces of plastic packaging for clamshell boxes, terminal for plate with material with inner packing, pack (stick) into the quality certificate, indicate the product name, specification, quantity production date.
- (2) 外包装为纸箱，贴装箱单，装箱单上注明产品名称、规格型号、数量、出货日期。
Exterior package is carton, facing the packing list, the packing list marked with product name, specification model, quantity, date of dispatch.
- (3) 产品在箱内不晃动。
The product in the box must not rock.

5.2. 运输 Transportation

允许用任何方式运输，勿淋湿及机械性损伤。

Allow for any way transportation, can't get wet and mechanical injury.

5.3. 贮存 Storage

包装完毕的连接器应在环境温度为 $-10^{\circ}\text{C}\sim+40^{\circ}\text{C}$ ，相对湿度 $\leq 80\%$ ，周围空气中没有酸性，碱性及其它腐蚀性气体的库房中贮存。

The connector of packing finished should be in the ambient temperature between -10°C to $+40^{\circ}\text{C}$, relative humidity $\leq 80\%$. To store in storehouse does not have acidic, alkaline air and other corrosive gas in the ambient air.

6、修订 Revise: 本公司保留在任何时间修改或完善相关产品的权利。

The company reserves at any time change or improve the rights of related products.