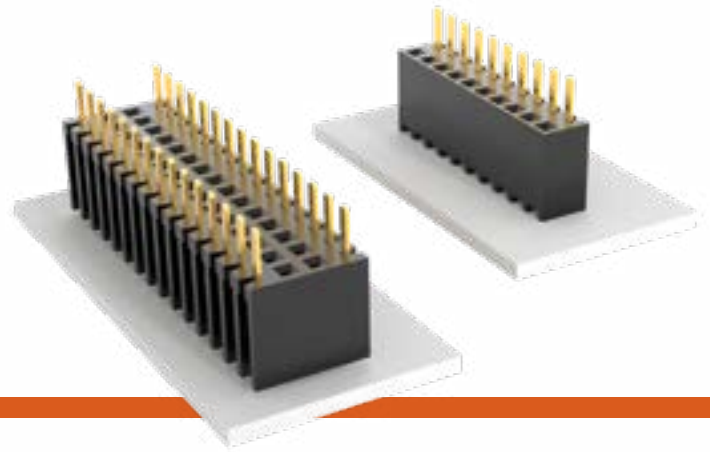


# BOTTOM MOUNT SOCKET STRIPS

(2.54 mm) .100" PITCH • BSW SERIES



## BSW

### Mates:

TSW, MTSW, HTSW,  
MTLW, TSM, EW, ZW,  
HW, DW, PHT

## FEATURES

- Bottom mount socket strips accept .025" SQ terminals.
- Ideal for soldering and plugging from the same side of the board.
- For low profile connections and high temperature soldering.

## SPECIFICATIONS

### Insulator Material:

Black Thermoplastic

### Insulation Resistance:

5000 MΩ min

### Contact Material:

Phosphor Bronze

### Plating:

Au or Sn over

50 μ" (1.27 μm) Ni

### Operating Temp Range:

-55 °C to +125 °C with Gold

-55 °C to +105 °C with Tin

### Withstanding Voltage:

1000 VRMS @ 60 Hz

### Insertion Depth:

(3.68 mm) .145" to

(6.35 mm) .250"

## PROCESSING

### Lead-Free Solderable:

Wave only

## ALSO AVAILABLE

MOQ Required

Other Platings

BSW	-	1	NO. PINS PER ROW	-	LEAD STYLE	-	PLATING OPTION	-	ROW OPTION
-----	---	---	---------------------	---	---------------	---	-------------------	---	---------------

02 thru 36

**-04**

= Standard  
Lead

**-24**

= Low  
Insertion Force

**-L**

= 10 μ" (0.25 μm)  
Gold contact,  
Matte Tin on tail

**-G**

= 20 μ" (0.51 μm)  
Gold contact,  
Gold Flash on tail

**-T**

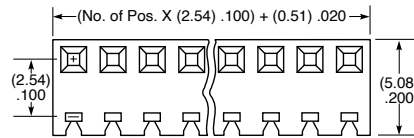
= Matte Tin  
(Not available with  
Low Insertion Force)

**-S**

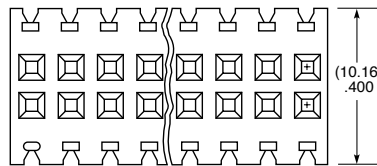
= Single Row

**-D**

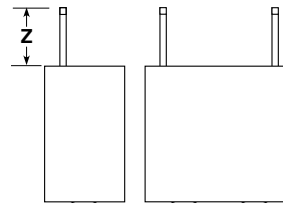
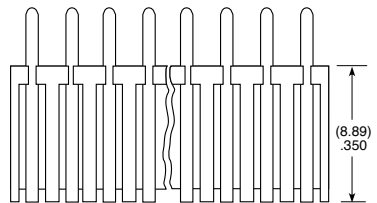
= Double Row



**-S**



**-D**

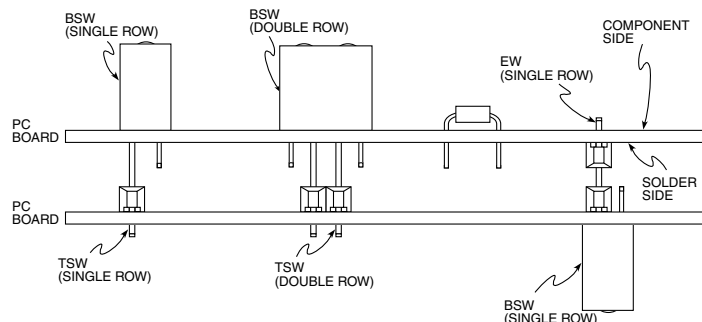


**-S**

**-D**

ROW OPTION	Z
-S	(4.31) .170
-D	(4.32) .170

## APPLICATIONS



### Note:

Some lengths, styles and  
options are non-standard,  
non-returnable.