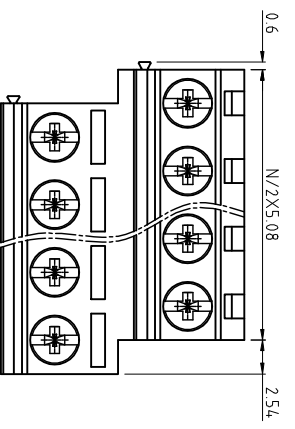
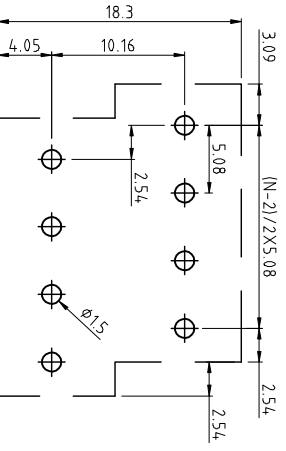
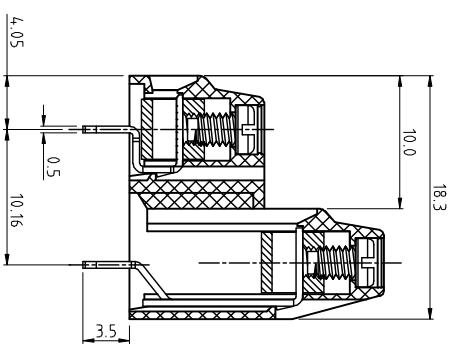
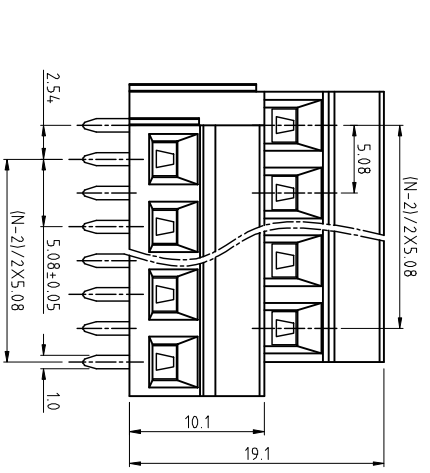


SIGN	DESCRIPTION	DATE	APPROVER



N=Number of contacts



P.C.B. LAYOUT

Technical Data:

Material:

- Contact(metal housing): Copper Alloy Machined(option)
- Terminal screw: Steel galvanized with Cr3+ plated
- Solder Pin: Copper Alloy with Tin plated
- Insulator body(housing): Polyamide(Glass filled)(UL 94V-0)

Electrical

- Voltage rating: 300VAC
- Current rating: 16 Amps/way max
- Contact resistance: 20mΩ(max)
- Withstanding Voltage: 2500VAC(min) Test time=60sec/1pcs
- Wire range: 12-30AWG

Mechanical:

- Torque: 4.5kgf.cm/M2.5
- Operating temperature: -40°C to +105°C
- Soldering reliability:
- Test temperature= 250°C±10°C
- 5 seconds max

Ordering Information:

F35 - L - E XX - X 0 0 X 0

2 02

24 24

1 "—" SCREW

2 "-/+ " SCREW

5 Green

6 Blue

8 Grey

A Black

WELINK 恒翔電子科技有限公司
Welink International Co., LTD.

TOLERANCE	APPROVED:	NAME:
X: ±0.50	CHECKED:	F35 - L - pitch 5.08mm
X.X: ±0.30	DRAWN: Yang Ming	- series
X.XX: ±0.20	2011.10.01	
X° ±1°	UNITS: mm	
	REV: A	

SCALE: 2.5 / 1	PAGE: 1 / 1	DWG NO: 9F35LE201A
----------------	-------------	--------------------