

## 3 Elements Standard Series

**3R** Ø8mm, 10mm long

### SPECIFICATION

Model Name	DC Breakdown Voltage	Maximum Impulse Breakdown Voltage		Maximum Impulse Discharge Current	Alternating Discharge Current		Impulse Life	DC Holdover Voltage	Minimum Insulation Resistance	Maximum Capacitance
	(V)	(V)		(8/20 μs) (KA)	(A)		(10/1000 μs) (100A)	(V)	(GΩ)	(pf)
	100V/s	100V/μs	1000V/μs	10 times	50HZ, 1sec	Single 9 cycle	times	<150ms	Note 2	1MHZ
<b>3R075</b>	75 ±20%	600	700	20	20	130	300	52	10	2
<b>3R090</b>	90 ±20%	600	700	20	20	130	300	52	10	2
<b>3R150</b>	150 ±20%	500	700	20	20	130	300	52	10	2
<b>3R200</b>	200 ±20%	500	700	20	20	130	300	135	10	2
<b>3R230</b>	230 ±20%	600	700	20	20	130	300	135	10	2
<b>3R250</b>	250 ±20%	600	700	20	20	130	300	135	10	2
<b>3R260</b>	260 ±20%	600	700	20	20	130	300	135	10	2
<b>3R300</b>	300 ±20%	650	750	20	20	130	300	135	10	2
<b>3R350</b>	350 ±20%	700	800	20	20	130	300	135	10	2
<b>3R400</b>	400 ±20%	800	900	20	20	130	300	135	10	2
<b>3R420</b>	420 ±20%	800	900	20	20	130	300	135	10	2
<b>3R470</b>	470 ±20%	900	1000	20	20	130	300	135	10	2
<b>3R550</b>	550 ±20%	1000	1100	20	20	130	300	135	10	2
<b>3R600</b>	600 ±20%	1000	1100	20	20	130	300	135	10	2

### NOTE

1 : UL497B Recognized, File E223314

2 : DC Breakdown Voltage

DC Measuring Voltage

75-145V

50V

200-400V

100V

420-600V

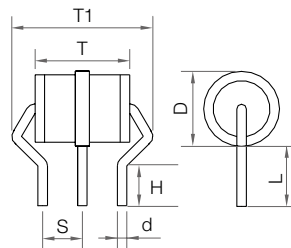
250V

### Dimensions

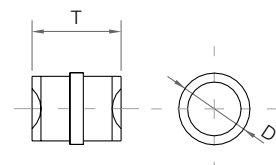
Unit: mm

Item	Dimensions	
	Spec.	Tolerance
<b>D</b>	8.0	+0.2, -0.8
<b>T</b>	10.0	±0.5
<b>T1</b>	13.4	+0.8, -0.5
<b>L</b>	7.5	±0.5
<b>S</b>	4.4	±0.4
<b>d</b>	1.0	±0.05
<b>R1</b>	8.1	±0.3
<b>R2</b>	9.8	±0.4.
<b>H</b>	4.5	Min.

### C TYPE



### B TYPE



### CF TYPE

