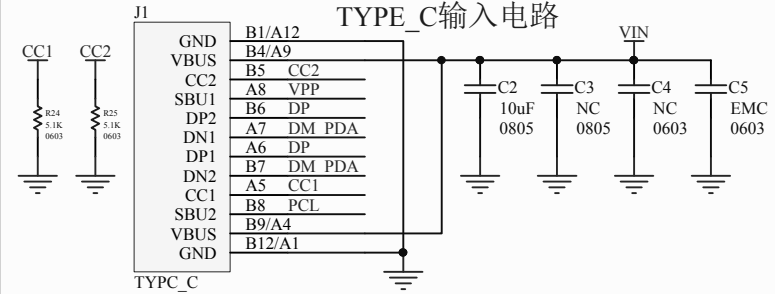
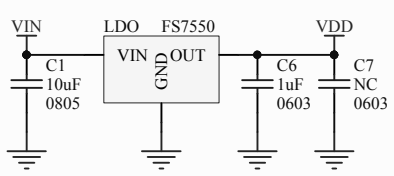


### TYPE\_C输入电路



### 5V稳压电路

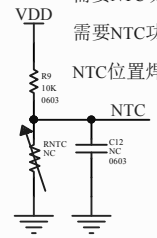


标准版本不支持NTC

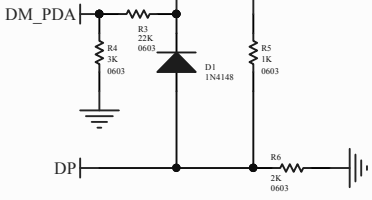
需要NTC功能: 软件要定制

需要NTC功能: R9贴10K-1%, C12贴10nF

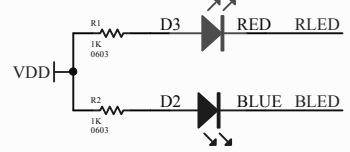
NTC位置焊接NTC参数: 10K 1% B值3435



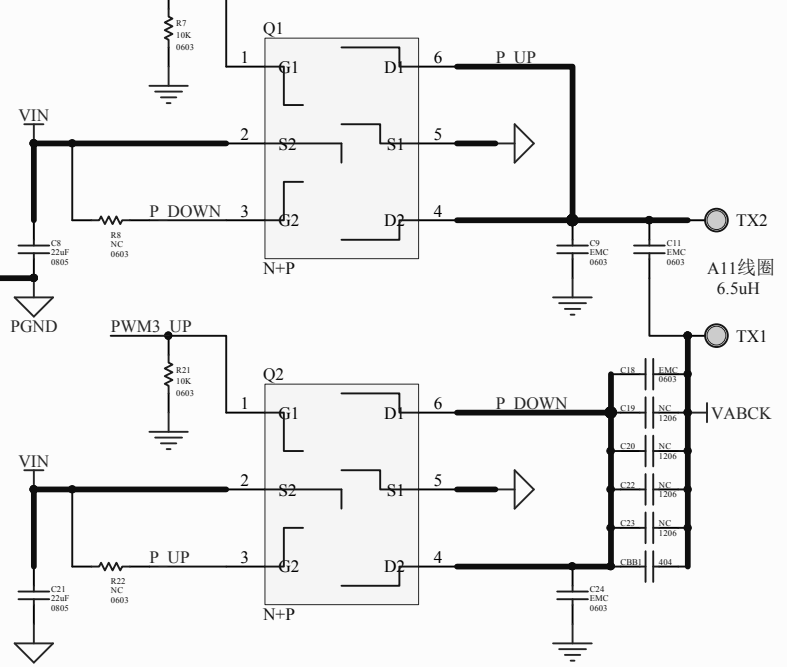
### QC协议



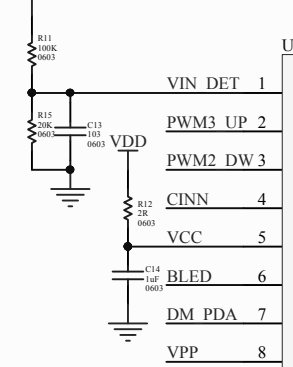
### 工作指示灯



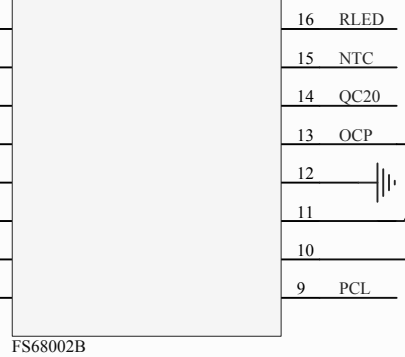
### PWM2 DW



### VIN

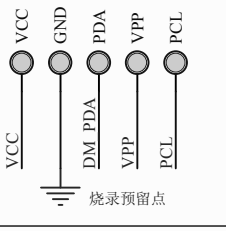
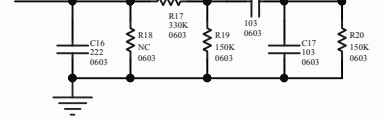


### U1



FS68002B

### CINN



Title		
Size	Number	Revision
A4		
Date:	2023-06-30	Sheet of
File:	E:\泛海微电子资料\FS68002B 10W无线充电原理图.SchDoc	