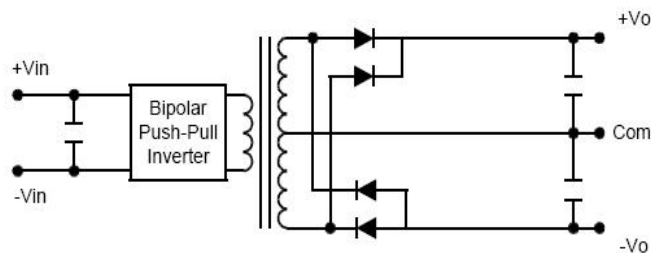


0.2~2W, 微型SIP, 单/双输出直流/直流转换器

主要特性

- 效率高达 88%
- 1000VDC 隔离电压
- MTBF > 2,000,000 Hours
- 低成本
- 输入 5, 12, 15 and 24VDC
- 输出 100,110、150、180、200 、250、300、 500、800VDC
±50、±55、 ±75、±90、 ±100、 ±125、 ±150、 ±250and±400VDC
- 工作温度 -40°C~ +85°C
- UL 94V-0 阻燃封装
- Internal SMD Construction
- Industry Standard Pin out

结构图



绝对最大额定参数

Short-Circuit Protection	60 Second
Lead Temperature 1.5mm from case for seconds	300°C
Internal Power Dissipation	450mW
Input Voltage Vin , HV05types	7V
Input Voltage Vin ,HV12 types	15V
Input Voltage Vin ,HV15 types	18V
Input Voltage Vin ,HV 24 types	28V

Model Selection Guide

产品型号	输入电压	输入电流		输出电压	输出电流	效率 满载
		满载	空载			
	VDC	mA (typ)	mA(typ)	VDC	mA(max)	%(typ)
HV05200S-W2	5(4.5~5.5)	67	15	200	1	60
				±100	±1	
HV12180S-2W	12(10.8~13.2)	200	23	180	10	75
				±90	±10	
HV12300S-2W (12SMV300)	12(10.8~13.2)	200	18	300	6	75
				±150	±6	
HV24200S-2W	24(21.6~26.4)	104	15	200	10	80
				±100	±10	

Input Specifications

Parameter	Model	Min	Typ	Max	Unit
Input Voltage	5	4.5	5	5.5	VDC
	12	10.8	12	13.2	
	15	13.5	15	16.5	
	24	21.6	24	26.4	
Reverse Polarity Input Current	All Models			0.3	A
Input Filter		Internal Capacitor			

Output specifications

Parameter	Conditions	Min	Typ	Max	Unit
Output Voltage Accuracy		---	±3.0	±5.0	%
Output Voltage Balance	Dual Output Balanced Loads	---	±3	±4	%
Line Regulation	For Vin Change of 1%	---	±1.2	±1.5	%
Load Regulation	Io=20% to 100%		8	15	%
Ripple & Noise(20MHz)	Output	---	0.5%	1%	V
Ripple & Noise(20MHz)	Over Line , Load & Temp	---	---	2%	V
Over Load		120	---	---	%
Temperature Coefficient		---	±0.01	±0.02	%/°C
Output Short Circuit	60 Second				

General Specifications

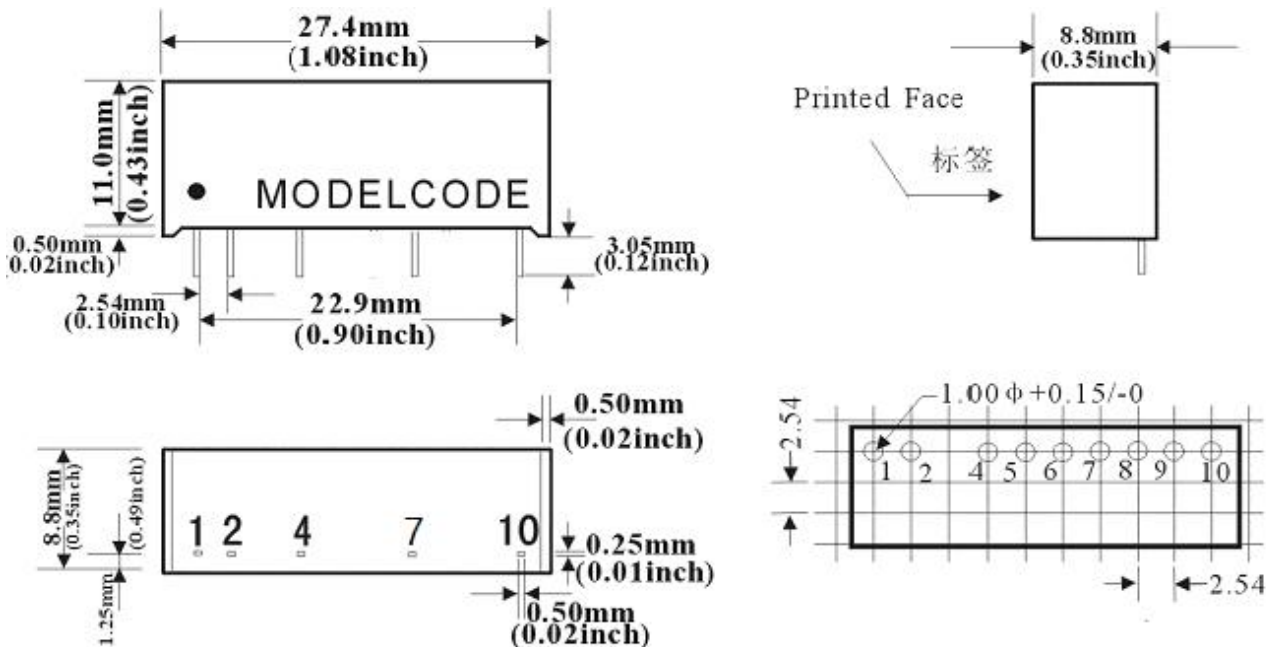
Parameter	Conditions	Min	Typ	Max	Unit
		A Series			
Isolation Voltage Rated	60 Seconds	1000	---	---	VDC

Isolation Voltage Test	Flash Tested for 1 Second	1000	---	---	VAC
Isolation Resistance	500VDC	1000	---	---	MΩ
Isolation Capacitance	100KHz, 1V	---	60	100	PF
Switching Frequency		50	100	120	KHz
MTBF	MIL-HDBK-217F@25°C, Ground benign	2000	---	---	K Hours

工作环境

Parameter	Conditions	Min	Typ.	Max	Unit
Operating Temperature	Ambient	-40	---	+85	°C
Operating Temperature	Case	-40	---	+90	°C
Storage Temperature	---	-40	---	+125	°C
Humidity	---	---	---	95	%
Cooling	Free-Air convection				

外形尺寸



Pin Connection

Physical Characteristics

Case Size : 27.94×8.8×11mm

Pin	HV Series
1	+Vin
2	-Vin
4	-Vout
7	COM
10	+Vout

1.08×0.35×0.43inches

Case Material : Non-Conductive Black Plastic

Weight : 5g ± 0.5g