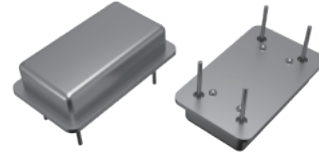


## Crystal Oscillator, Series FCO-FL

### Crystal Oscillator 20.4×12.8 DIP FULL Size

#### FEATURE

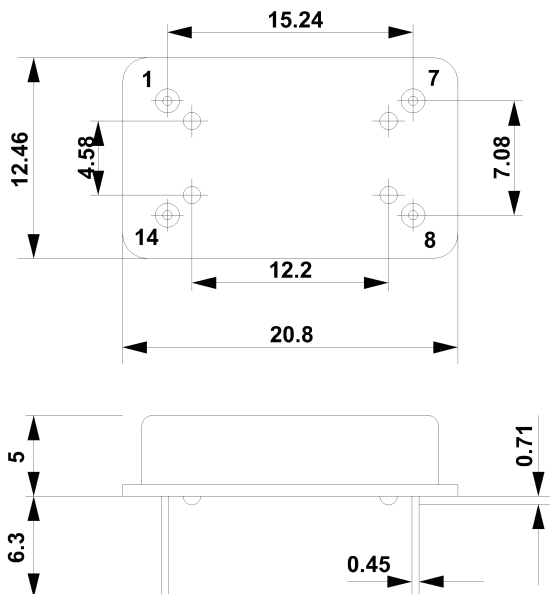
- Typical 20.4×12.8×5mm
- Tight symmetry (45 to 55%) available
- Operation voltage:5V, 3.3V
- Tri-state enable / disable



#### ELECTRICAL SPECIFICATIONS

Item	Specifications				Unit
	3.3V		5.0V		
Parameter	Min.	Max.	Min.	Max.	
Fan out Type	CMOS				
Supply Voltage Variation	3	3.6	4.5	5.5	V
Frequency Range	0.25	180	0.25	180	MHz
Frequency Stability	±25, ±50, ±100, or specify				PPM
Operating Temperature	0~70, -20~70, -40~85, or specify				°C
Supply Current	0.25MHz≤FO<20MH		-	15	mA
	20MHz≤FO<50MHz		-	40	mA
	50MHz≤FO<180MHz		-	50	mA
Duty Cycle	45	55	45	55	%
Transition Time :	0.25MHz≤FO<20MHz		-	10	-
	20MHz≤FO<50MHz		-	6	-
	50MHz≤FO<180MHz		-	5	-
Rise/Fall Time	Vol (Max)		-	0.33	-
	2.4V/4.5V		2.4/2.5	-	3
Input Voltage	CMOS load max		15		15/50
	TTL load max		10TTL		-
Driving Ability	5ms max(15pF)/ 10ms (50pF)				pF
Start Time	10TTL				mSec
E/D Function	#1 OPEN		Pin#8 Open		Pin#8 Open
	#1 >=2.2V		Pin#8 Open		Pin#8 Open
	#1 <=0.8V		Pin#8 High		Pin#8 High
Aging(@25°C 1st year)	±3	±5	±3	±5	ppm
Storage Temp. Range	-55	125	-55	125	°C

#### DIMENSION (mm)



Pin	Function
1	Tri-State/NC
7	GND
8	Output
14	Vdd