

# 高密度光纤配线架规格书

## 描述:

高密度光纤配线架旨在适应数据中心和电信环境中的高密度应用。该工厂预先安装并经过测试的光纤配线架可节省现场安装时间并提高可靠性。外壳的设计允许使用多芯光纤跳线（单独出售）轻松连接到 LC 适配器，并可安装在标准的 19 英寸或 23 英寸机架或机柜框架中。最大可扩展至 96 个 LC 端口。机架式 MTP / MPO 配线架 ODU-L18 是一款高密度，模块化，全负载 LC Flat 1U 光纤配线架。它是一个完整的基于光纤适配器面板的交钥匙解决方案，在 1U 中总共最多 96 根 LC 光纤（24 LC QUAD）。这种模块化光纤配线架出厂预装有数量。 4 个 12/24 光纤 MTP / MPO 模块盒或适配器板，可在 10 / 100G 网络中快速实现。

## 特征:

- 01.UP 至 1U 中的 96 个光纤 LC 端口
- 02.Qty。 4 个带 12/24 LC 的 MTP / MPO 模块盒
- 03.Qty。 4 个带 12/24 LC 的转接板
- 04.在接线板中将适配器板与模块盒混合的灵活性
- 05.可提供 SM, OM1, OM2, OM3 和 OM4 纤维等级
- 06.Flat 前面板优化电缆布线
- 07.可移动顶部，便于光缆管理
- 08.易于接入的 MPO / MTP 端口，用于连接中继电缆
- 09.Compliant IEC-61754-7, EIA / TIA-604-5 和 RoHS

10.Factory 终止并测试

11.MPO / MTP 组件具有卓越的光学和机械性能

高度尺寸 (W \* D \* H) 纸盒数量/印版最大容量

1U485 毫米\*210 毫米\*44 毫米 4 96

运行条件

工作温度: -20°C - + 60°C

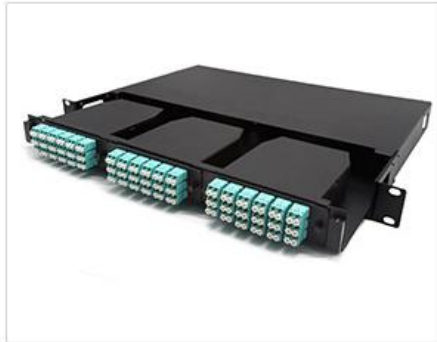
储存温度: -40°C - + 70°C

湿度: 30°C时 90%

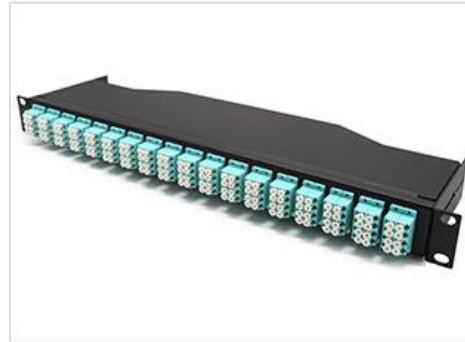
70kPa-106kPa

Features:

1. 144 LC Fiber Ports in 1RU with Flat Front
2. Comprise from 36 QUAD LC adapters at the front and 12 MPO/MTP adapters at the back
3. Available in SM, OM1, OM2, OM3 and OM4 fiber grades
4. Flat Front Panel for Optimal Cable Routing
5. Easily Accessible MPO/MTP Ports for Connection to Trunk Cable



96 fiber LC Modular MTP/MPO Patch Panel



Ultra Density MTP/MPO Patch Panel



Modular MTP/MPO Patch Panel



Modular 3U MTP/MPO-LC Patch Panel

Description:

The High Density fiber patch panels are designed to accommodate high density applications in Data Centers and Telecommunication environments. This factory pre-populated and tested Fiber Patch Panel saves on-site installation time and increase reliability. The design of enclosure allows for easy connection to the LC adapters using multi-fiber optical patch cords (sold separately) and is mountable in a standard 19in or 23in rack or cabinet frame. Maximum expandable to 96 LC ports. The rack mount MTP/MPO patch panel ODU-L18 is a high density, modular , fully-loaded LC Flat 1U fiber patch panel. It is a complete Fiber Adapter Panel based turnkey solution with a total of max 96 LC fibers (24 LC QUAD) in 1U. This modular fiber patch panel is factory pre-loaded with Qty. 4 12/24 fiber MTP/MPO Cassettes or Adapter Plates for quick implementations in 10/100G networks.

Features:

01. UP to 96 Fiber LC Ports in 1U
02. Qty. 4 MTP/MPO Cassettes with 12/24 LC
03. Qty. 4 Adapter Plates with 12/24 LC
04. Flexibility to Mix Adapter Plates with Cassettes in Patch Panel
05. Available in SM, OM1, OM2, OM3 and OM4 fiber grades

- 06.Flat Front Panel for Optimal Cable Routing
  - 07.Removable Top for Easier Fiber Cable Management
  - 08.Easily Accessible MPO/MTP Ports for Connection to Trunk Cable
  - 09.Compliant IEC-61754-7, EIA/TIA-604-5 & RoHS
  - 10.Factory terminated and tested
  - 11.MPO/MTP components feature superior optical and mechanical properties
- | Height | Dimensions(W*D*H) | Quantity of Cassette/Plate | Max Capacity |
|--------|-------------------|----------------------------|--------------|
| 1U     | 485mm*294mm*44mm  | 4                          | 96           |
- Operation Conditions
- Operating Temperature:-20°C -- +60°C
- Storage Temperature:-40°C -- +70°C
- Humidity:90% at 30°C
- Air Pressure:70kPa - 106kPa