

Part Number	DC Spark-over Voltage	Maximum Impulse Breakdown Voltage		Max. Impulse Discharge Current (8/20 μ s)		Impulse Life (10/1000 μ s)	Normal Alternating Discharge Current		DC Holdover Voltage	Minimum Insulation Resistance	Maximum Capacitance (1MHz)
	100V/S	100V/ μ s	1KV/ μ s	1 times	10 times	100 A	50Hz 1Sec	Single 9 Cycles	<150ms		
	(V)	(V)	(V)	(KA)		Times	(A)		(V)		
2R075B-8S	75 \pm 20%	600	700	15	10	500	10	15	52	1	0.8
2R090B-8S	90 \pm 20%	600	700	15	10	500	10	15	52	1	0.8
2R150B-8S	150 \pm 20%	500	700	15	10	500	10	15	52	1	0.8
2R230B-8S	230 \pm 20%	500	600	15	10	500	10	15	80	1	0.8
2R250B-8S	250 \pm 20%	500	600	15	10	500	10	15	150	1	0.8
2R300B-8S	300 \pm 20%	550	650	15	10	500	10	15	150	1	0.8
2R350B-8S	350 \pm 20%	600	700	15	10	500	10	15	150	1	0.8
2R400B-8S	400 \pm 20%	650	750	15	10	500	10	15	150	1	0.8
2R470B-8S	470 \pm 20%	750	850	15	10	500	10	15	150	1	0.8
2R600B-8S	600 \pm 20%	900	1000	15	10	500	10	15	150	1	0.8
2R800B-8S	800 \pm 20%	1000	1100	15	10	500	10	15	150	1	0.8
2R1000B-8S	1000 \pm 20%	1500	1600	15	10	500	10	15	150	1	0.8

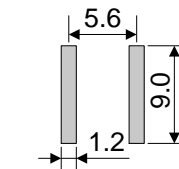
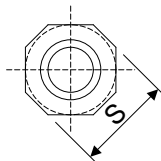
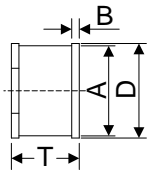
DC Spark-over Voltage	DC Measuring Voltage
70-90V	50V
150-400V	100V
470-1000V	250V



Packaging
Quantity: 600pcs Reel

Dimensions

Symbol	Dimension (mm)	
	Spec.	Tolerance
A	8.00	\pm 0.20
B	0.50	\pm 0.10
D	8.30	\pm 0.20
T	6.00	\pm 0.25
S	9.00	\pm 0.40



Recommended Pad Size