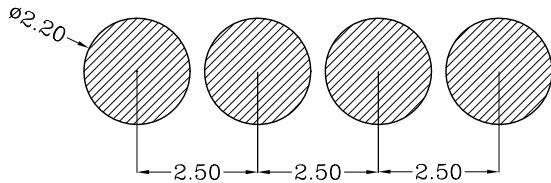
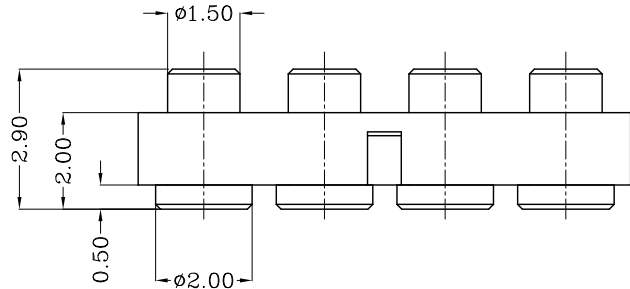
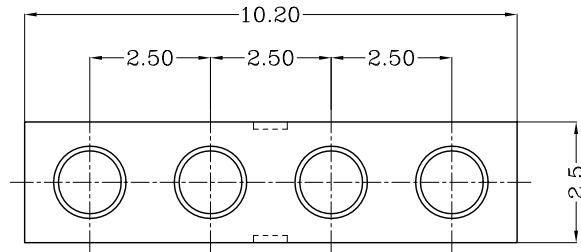
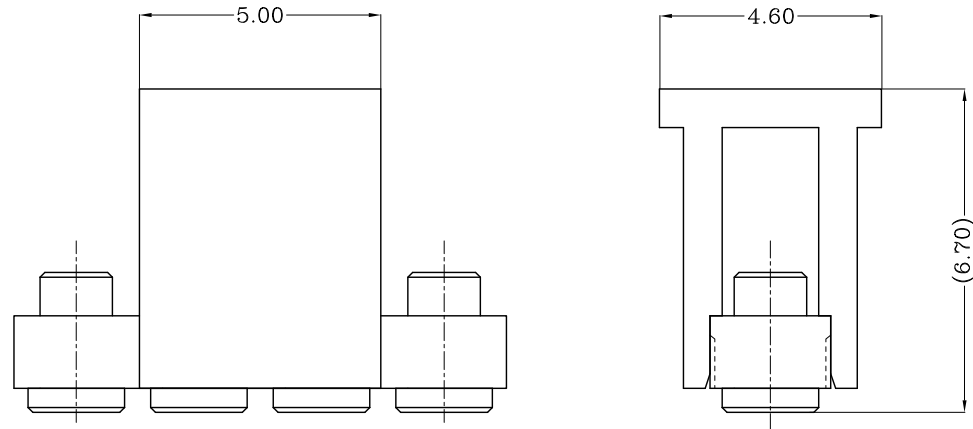


THIS INFORMATION IS CONFIDENTIAL AND IS DISCLOSED TO YOU ON CONDITION THAT NO FURTHER DISCLOSURE IS MADE BY YOU TO OTHER THAN TOP-LINK PERSONNEL WITHOUT WRITTEN AUTHORIZATION FROM TOP-LINK LTD.

DWN No.: C-10101041426



Recommended PCB Layout



- Notes:
- 1 Dimensions shall be interpreted per ASME Y14.5M.
 - 2 Electrical performance
Resistance: 30mOhm Max.Current rating: 2.0A
 - 3 RoHS compliant.

Item	Part name	Q'ty/Ea'	Material	Finish
1	HSG	1	High temp.Plastic UL94 V-0 Color Black	_____
2	PIN	4	Leaded Brass	Au 0.1um Min. over Ni 1.4um
3	CAP	1	High temp.Plastic UL94 V-0 Color Black	_____
4				
5				

DIST

DIST

1	NEW	2015/07/01
Rev.	Revision record.	Date.

Top-Link Electronics Ltd.		Type Customer drawing	Unit mm	Weight
TOLERANCES UNLESS OTHER SPECIFIED 0. = ± 0.0 = ±0.15 0.00 = ±0.10 0.000 = ±		DWN: Jason	APVD:	
Angle: ± SURF TEXTURE: REMOVE BURRS. BREAK SHARP EDGES R0.05 MAX.DO NOT SCALE PRINT.		CHK: Kent	REL:	
Name Customer drawing				
Scale 1:1	Size A4	DWG No. C-10101041426	Page 1/1	Rev. 1

10101041426

PART NUMBER

4

3

2

1