

5G智能物联网

# 5G/WIFI使用及如何 自动切换5G/WIFI网络指导

广和通大学计划项目组

2023Q2



# 目录

1、打开启用5G开关

2、打开WIFI开关并连接现有WIFI

3、自动切换5G/WIFI网络演示

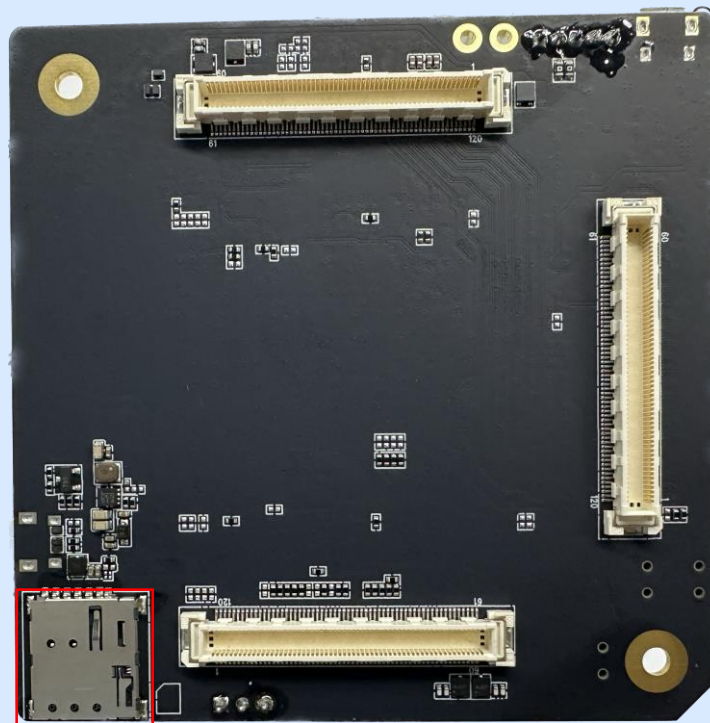
1

打开启用5G开关

# 打开启用5G开关

首先需要插入包含5G套餐的SIM卡

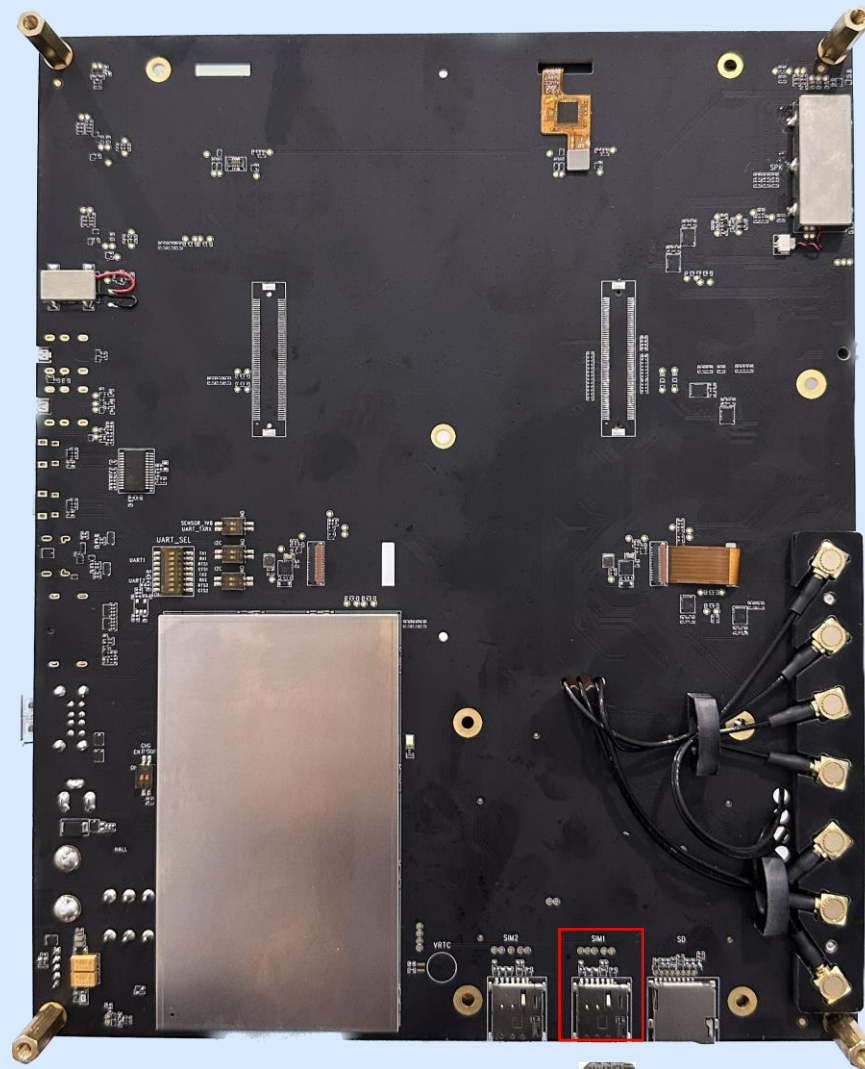
若单独使用ADP-SC171-CN-30，  
在ADP的背面SIM卡座中插入SIM卡



缺口朝里，金属触点朝下

# 打开启用5G开关

若使用SC171开发套件（ADP+EVKB）  
在SC171开发套件的背面插入SIM卡  
示例选择**SIM卡座1**



缺口朝里，金属触点朝下



# 打开启用5G开关

在设置中打开启用5G开关



2

打开WIFI开关并连接现有WIFI

# 打开WIFI开关并连接现有WIFI

在设置中  
打开WIFI开关  
并连接WIFI

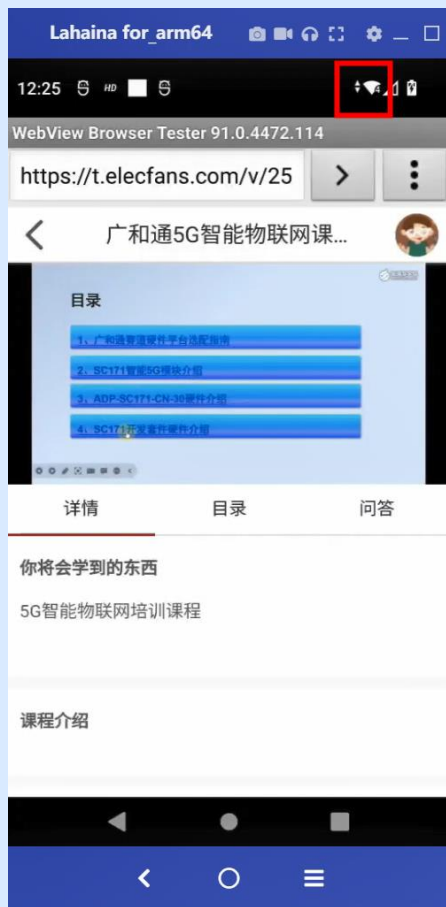




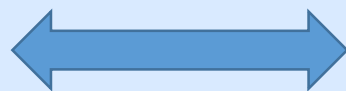
3

自动切换5G/WIFI网络演示

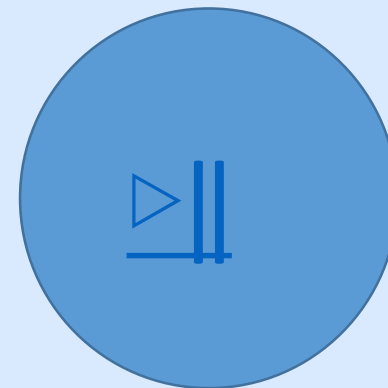
# 自动切换5G/WIFI网络演示



网络自动切换



演示视频：



# 完美无线体验

广和通致力于将可靠、便捷、安全、智能的无线通信解决方案普及至每一个物联网应用场景，为用户带来完美无线体验，丰富智慧生活。

We are committed to enabling industries with reliable, accessible, secure, and intelligent IoT wireless solutions and wireless module products to maximize their value, providing a perfect wireless experience to people and enriching smart life of the whole society.

**Copyright©2023 Fibocom Wireless Inc. All Rights Reserved.**  
The information in this document may contain predictive statements including, without limitation, statements regarding the future financial and operating results, future product portfolio, new technology, etc. There are a number of factors that could cause actual results and developments to differ materially from those expressed or implied in the predictive statements. Therefore, such information is provided for reference purpose only and constitutes neither an offer nor an acceptance. Fibocom may change the information at any time without notice.

深圳市广和通无线股份有限公司



☎ 0755-26733555

🏠 深圳市南山区西丽街道打石一路深圳国际创新谷六栋A座10-14层

🌐 [www.fibocom.com](http://www.fibocom.com)

**Fibocom** 广和通