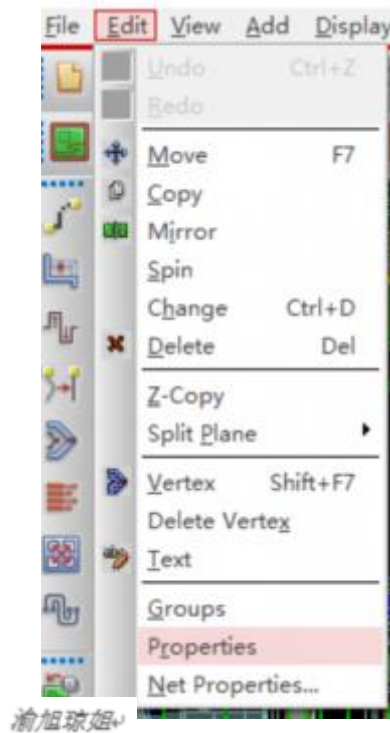
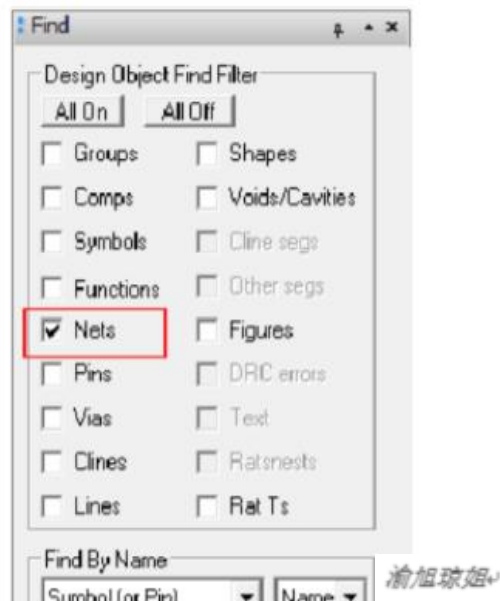


# Cadence Allegro 背钻设置

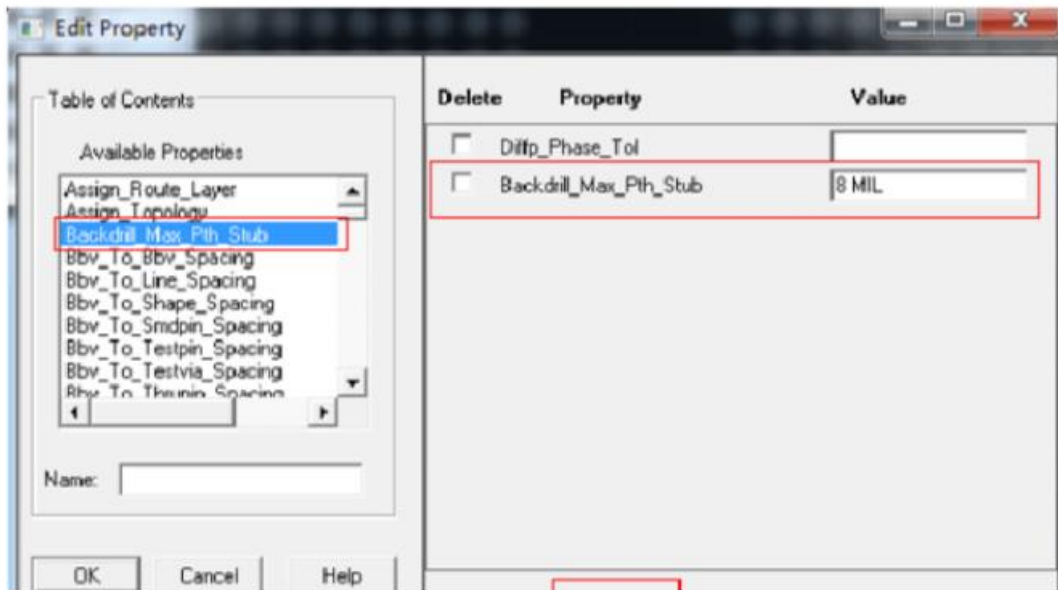
1: 执行菜单命令，选 EDIT->Properties，如下图所示：



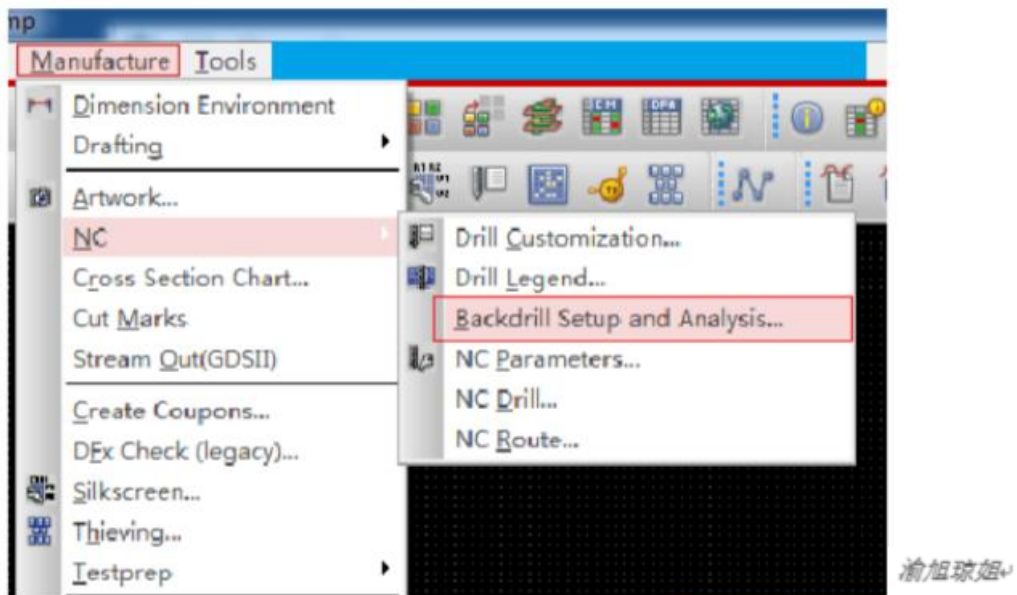
2. 勾选操作对象



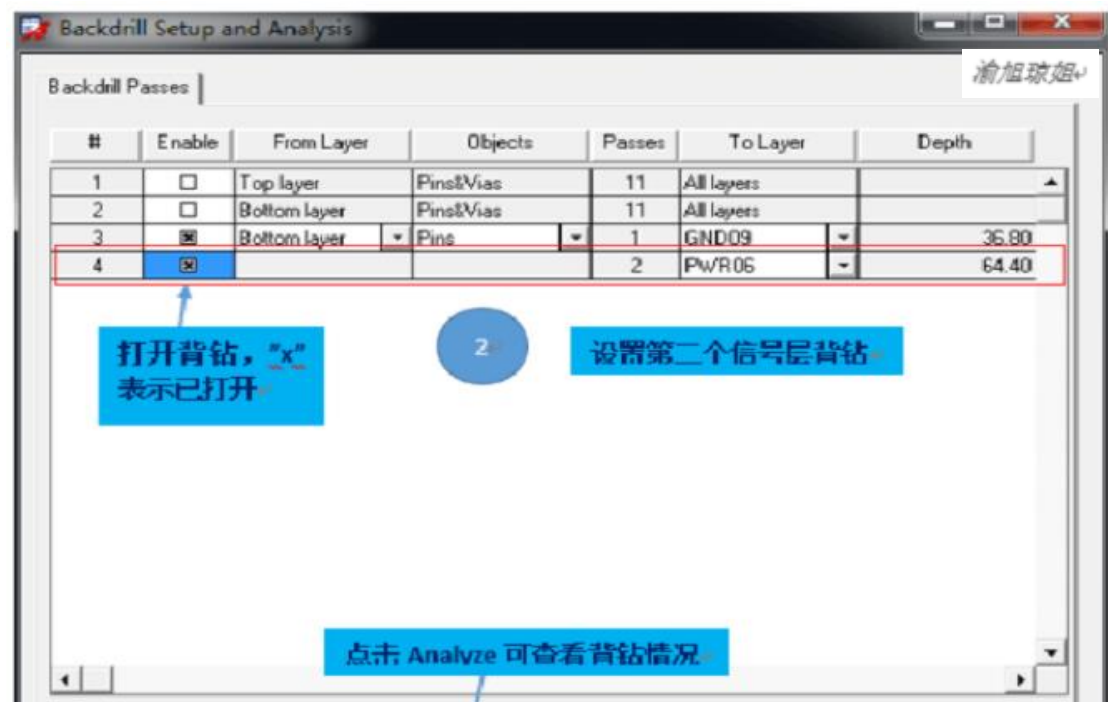
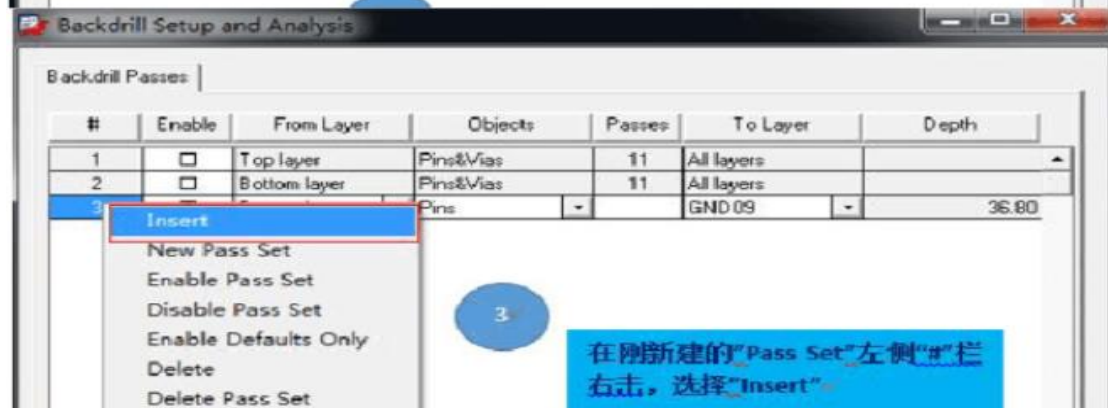
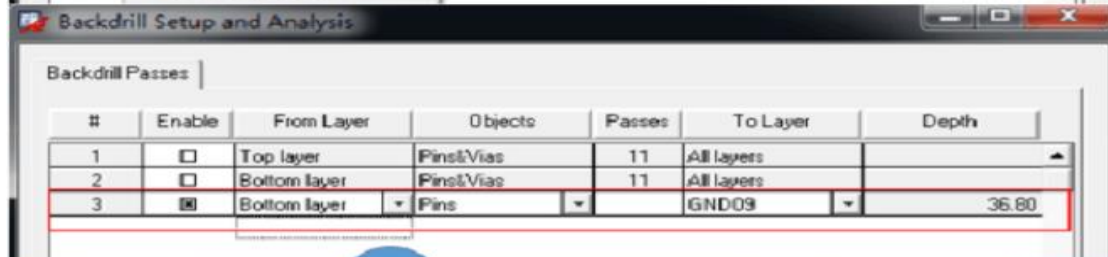
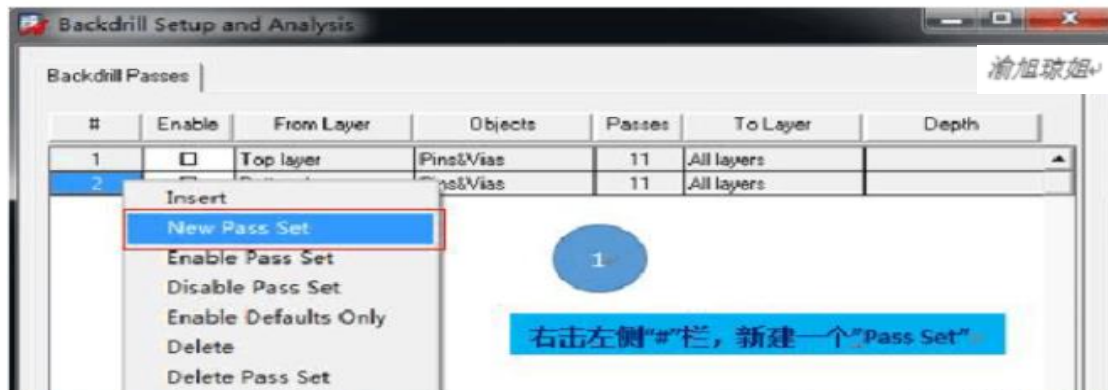
3. 选择要背钻的网络，增加背钻属性，背钻 Stub 值可以填 8，但是工厂加工能力可能达不到，此 Stub 值意义不大，随后点击“Apply”



4.选择 Manufacture->NC->Backdrill Setup and Analysis...进入背钻层设置



5.设置需要背钻的层，如需要背钻的信号分布在 Layer5、Layer8，背钻从 Botom->Top 方向背钻，将要钻掉的层设置分别设置为 Bottom->Layer6、Bottom->Layer9，设置如下



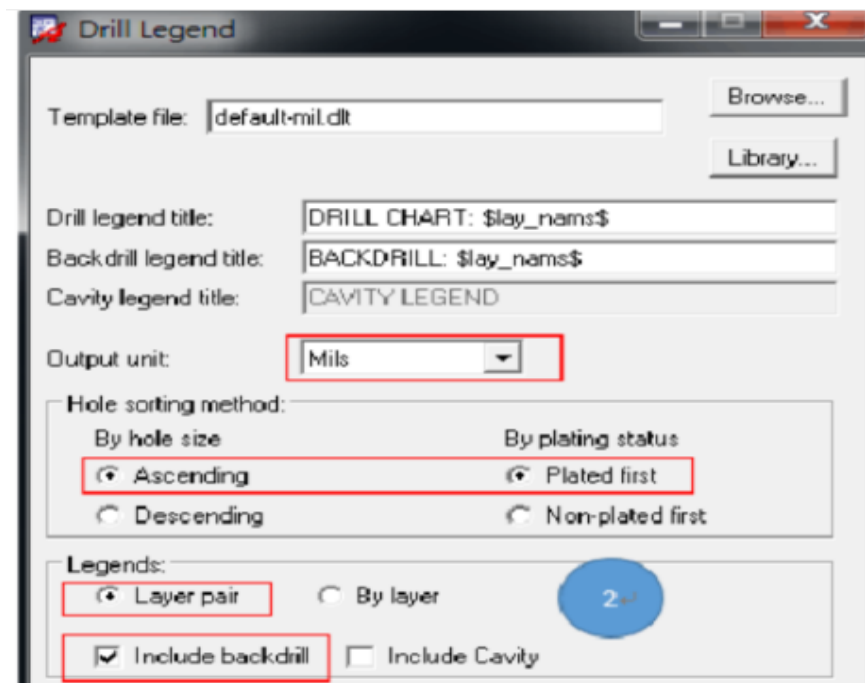
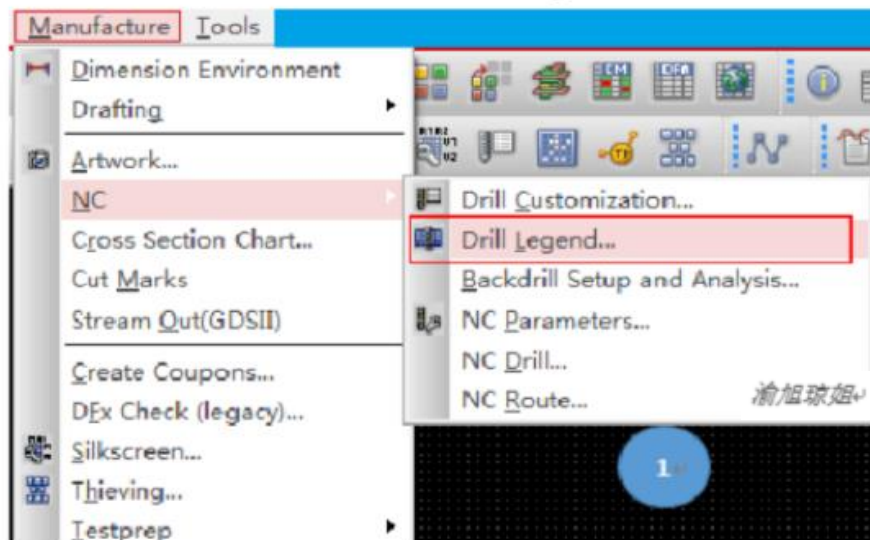
说明：

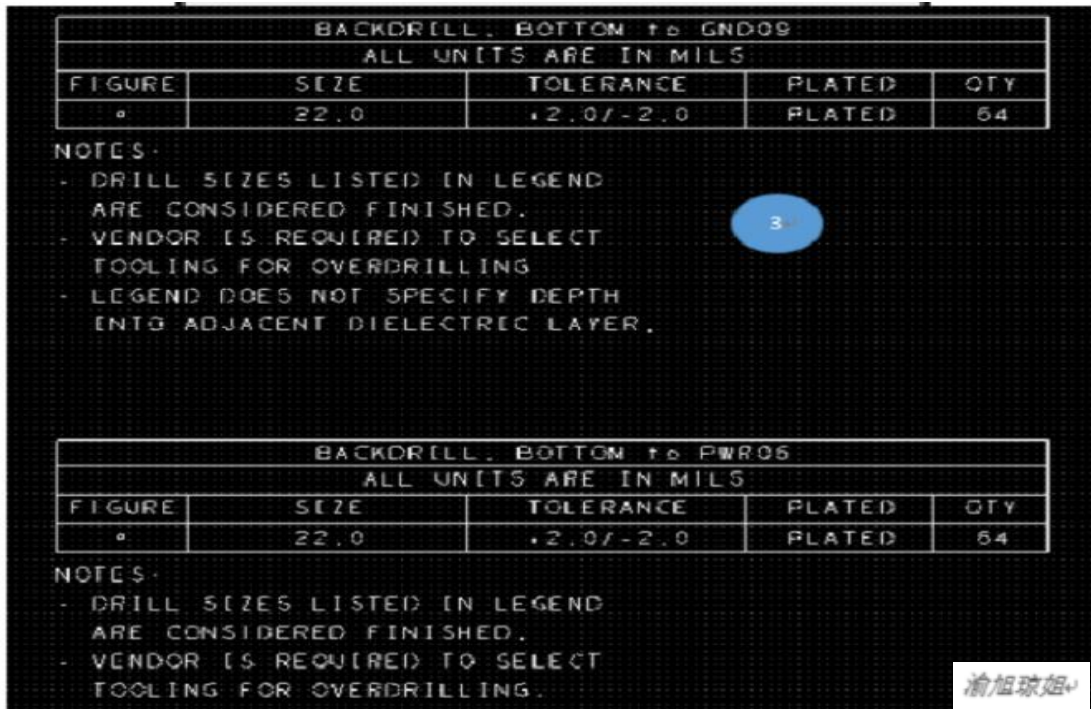
1). 因为信号层不能被钻掉，且工厂加工能力也不可能将 Stub 钻成 0，所以背钻一般就设置钻到信号所在层的前一层。

2). 因为背钻方向都是从 Bottom->Top，且都只是 Pin 脚进行背钻，所以需要背钻的信号走在多个信号层时，只在同一个 Pass Set 下新增一项即可。

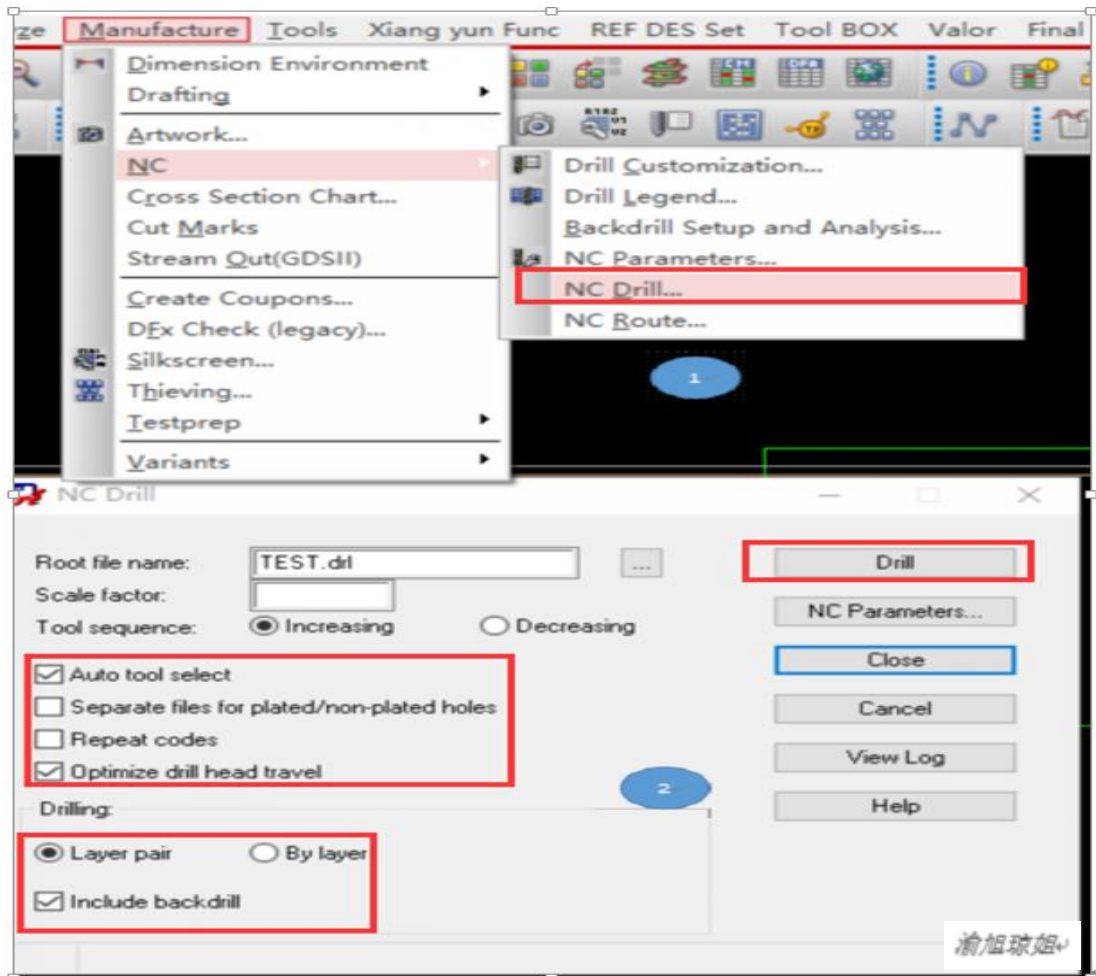
步骤 6 以后是在出生产文件时的动作

6. 选择 Manufacture->NC->Drill Legend 输出背钻符号





### 7.选择 Manufacture->NC Drill 输出钻孔文件



大家可随时探讨，可随时联系 V: 18323304126。QQ:369319917