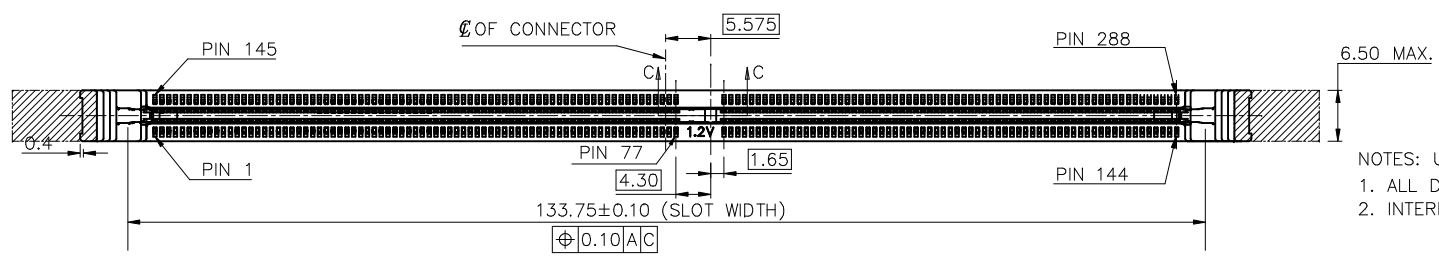
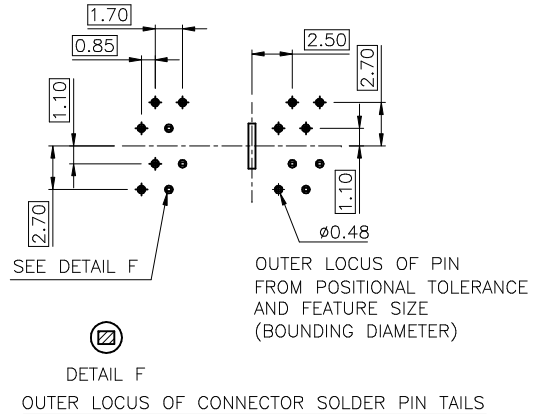
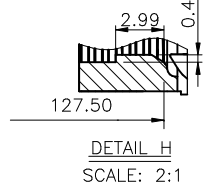
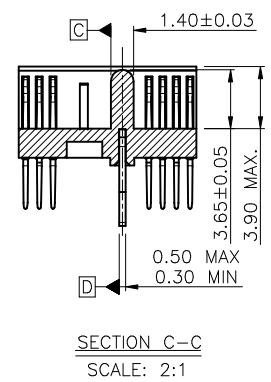
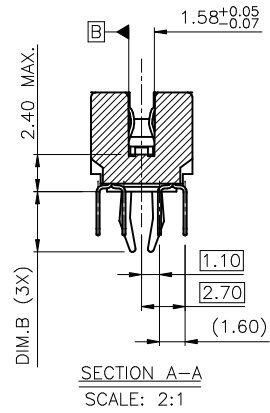
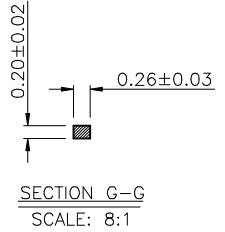
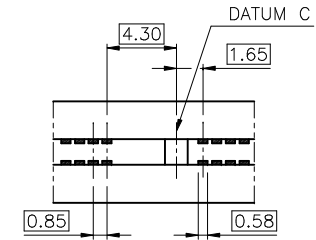
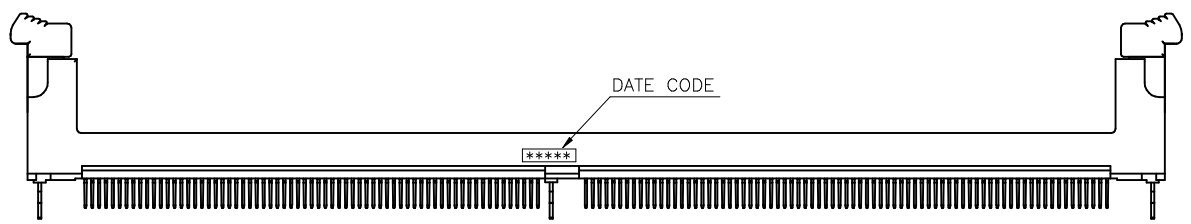
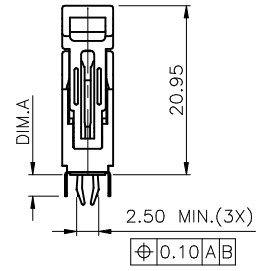
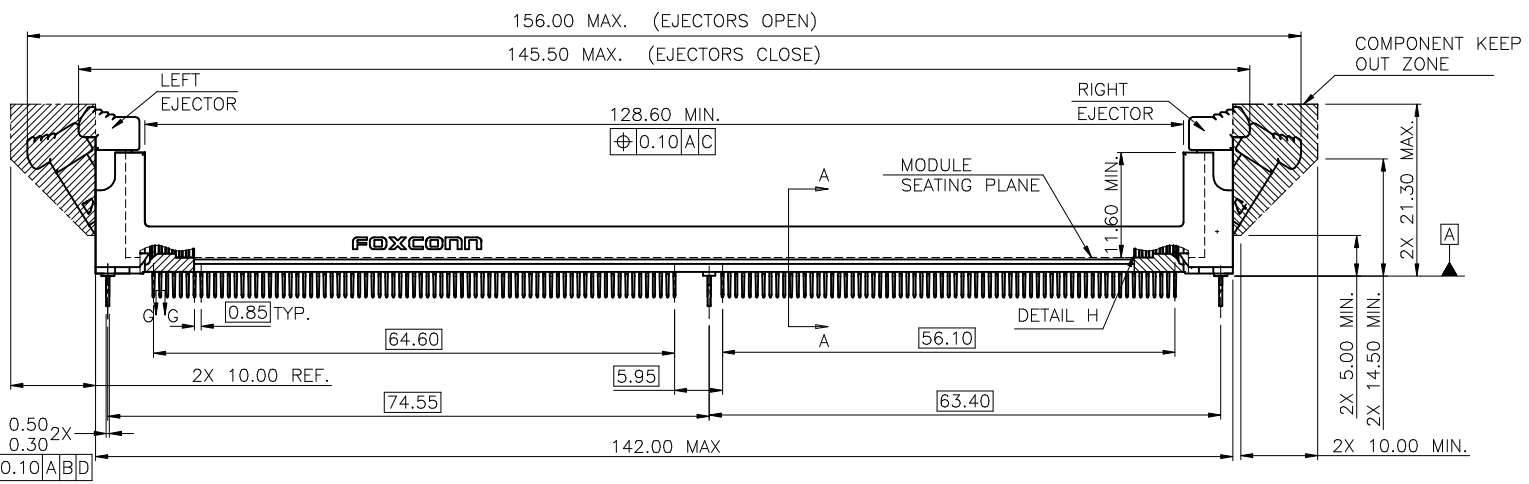


REV.	ECN.	NO.	APPD.
A	BC-15-0008181	Davy Bu 2/2/15	
B	BC-16-0002467	Davy Bu 1/15/16	



NOTES: UNLESS OTHERWISE SPECIFIED:
 1. ALL DIMENSIONS ARE IN MILLIMETER.
 2. INTERPRET DRAWINGS PER ASME Y14.5M-1994.



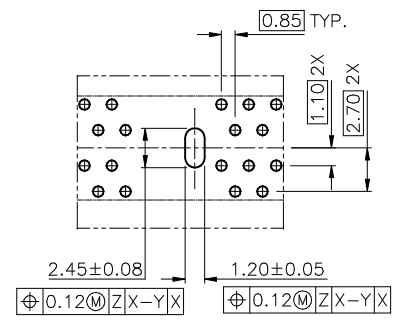
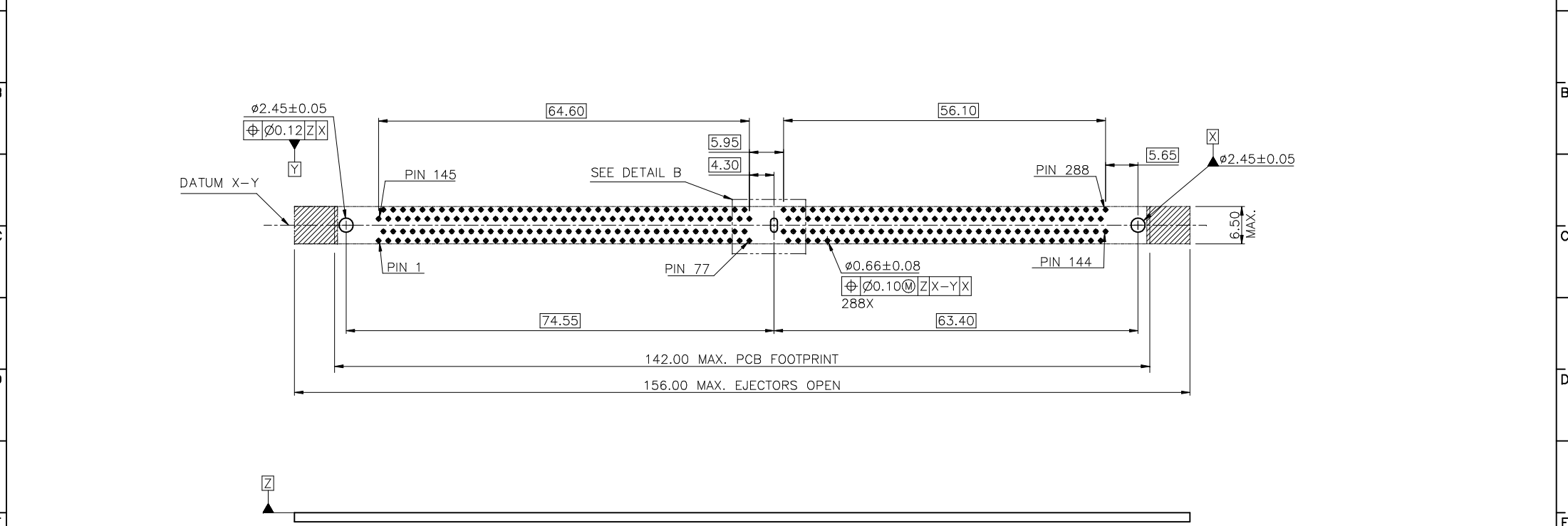
OUTER LOCUS OF CONTACT PIN FROM POSITIONAL TOLERANCE AND FEATURE SIZE (BOUNDING WIDTH)

OUTER LOCUS OF CONNECTOR CONTACT PIN

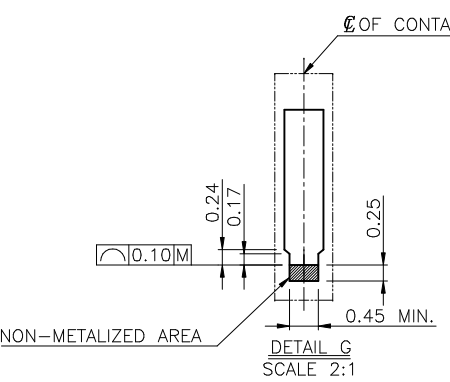
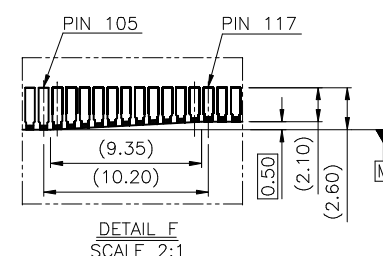
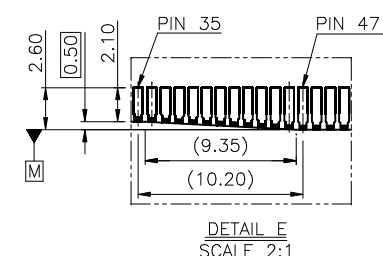
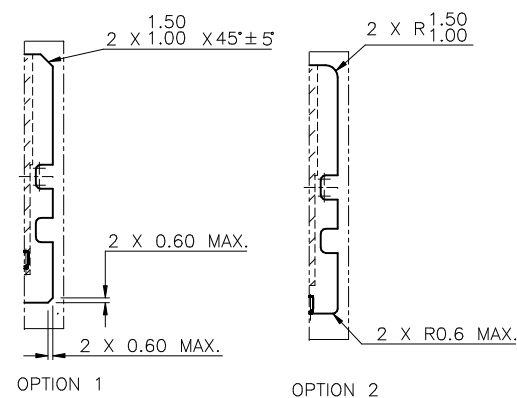
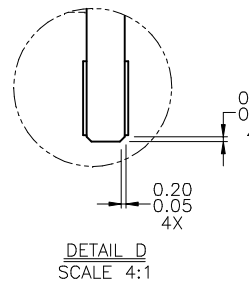
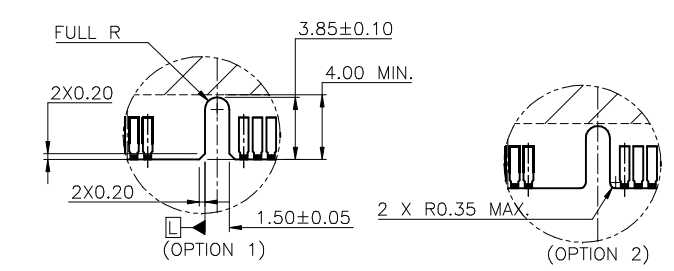
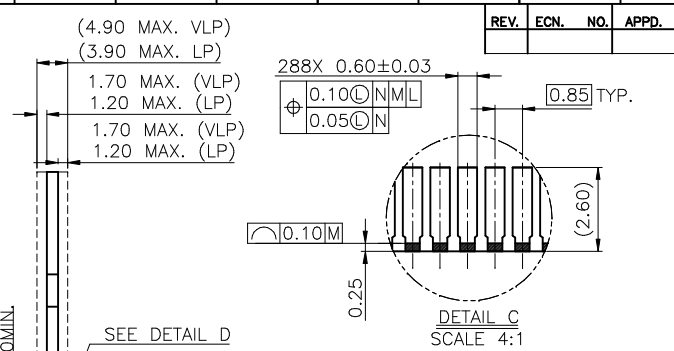
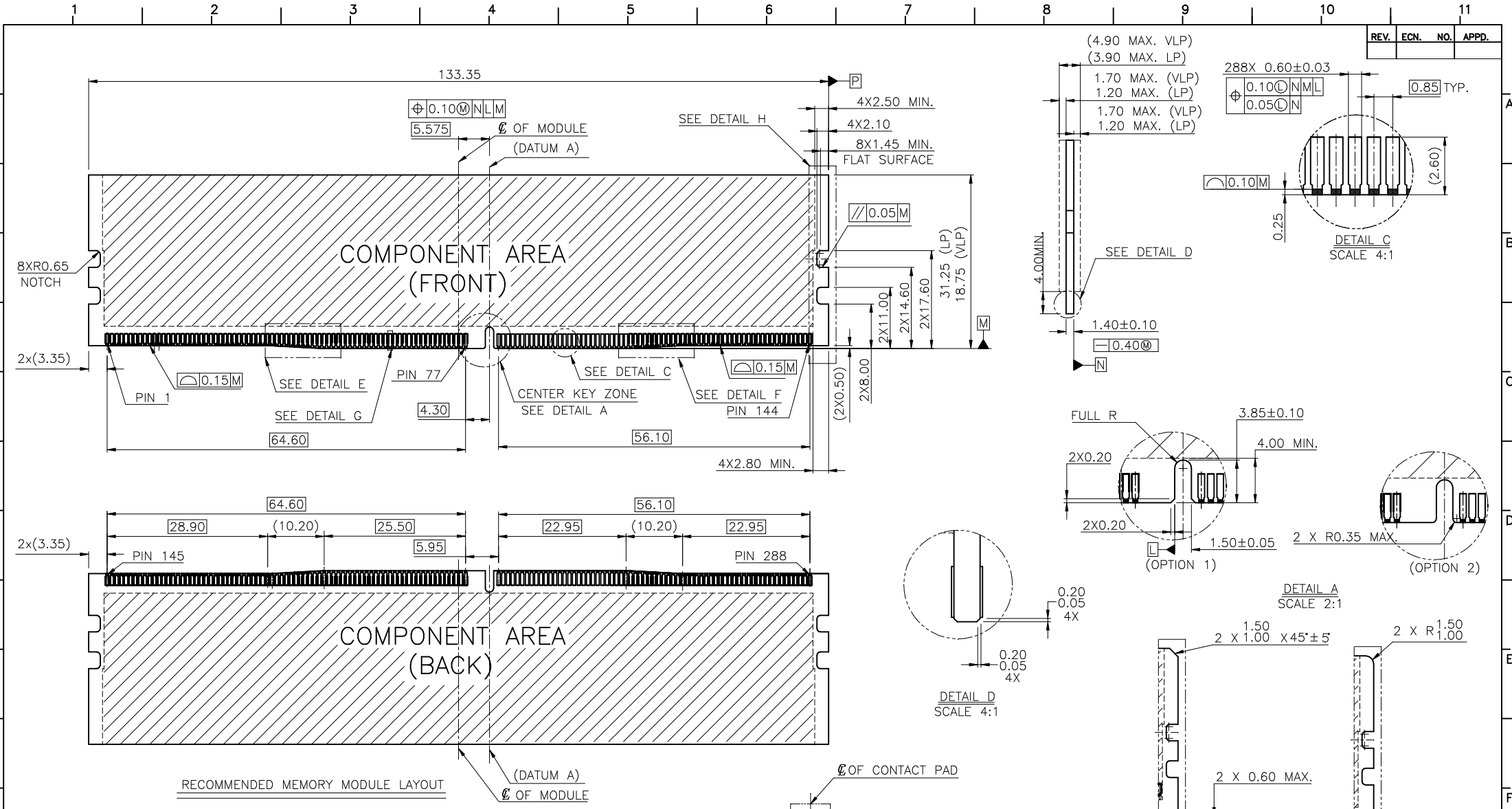
X.±	X.±	UNITS	mm	NAME (INTENDED USE)	FOXCONN®
.X± 0.25	.X±	MAT'L	N/A	DDR 4, 288 PIN 0.85mm PITCH, T/H	FOXCONN INTERCONNECT TECHNOLOGY LIMITED.
.XX± 0.15	.XX±	FINISH	N/A	PART NO. (INTENDED USE) AH088**-A9**C-**	CLASS: <input type="checkbox"/> SECRET <input type="checkbox"/> CONFIDENTIAL <input checked="" type="checkbox"/> GENERAL
.XXX±	.XXX±	Q'TY	N/A	APPD: Davy Bu 1/15/16	TITLE: CUSTOMER DRAWING
				CHKD: Johnny Tang 1/15/16	DWG NO.: 317-0000-2397
				DR: Eliana Zhang 1/15/16	SCALE SHEET REV. N/A 1/4 B

THESE DRAWINGS AND SPECIFICATIONS ARE THE PROPERTY OF FOXCONN INTERCONNECT TECHNOLOGY LIMITED AND SHALL NOT BE REPRODUCED, COPIED OR USED IN ANY MANNER WITHOUT THE PRIOR WRITTEN CONSENT OF FOXCONN INTERCONNECT TECHNOLOGY LIMITED.

PART NUMBER	DIM. A CONTACT TAIL	DIM. B METAL BOARD LOCK	REV.	ECN.	NO.	APPD.
AH0882*-A9**G-**-**	2.10±0.25	3.78±0.25				
AH0884*-A9**G-**-**	2.40±0.25	3.78±0.25				
AH0881*-A9**G-**-**	2.67±0.25	3.78±0.25				
AH0880*-A9**G-**-**	3.18±0.25	4.57±0.25				
AH0883*-A9**G-**-**	2.95±0.25	4.57±0.25				



X.±	X.±	UNITS	mm	NAME (INTENDED USE)	FOXCONN®
.X± 0.25	.X±	MAT'L	N/A	DDR 4, 288 PIN	FOXCONN INTERCONNECT TECHNOLOGY LIMITED.
.XX± 0.15	.XX±	FINISH	N/A	0.85mm PITCH, T/H	CLASS: <input type="checkbox"/> SECRET <input type="checkbox"/> CONFIDENTIAL <input checked="" type="checkbox"/> GENERAL
.XXX±	.XXX±	Q'TY	N/A	PART NO. (INTENDED USE)	TITLE: CUSTOMER DRAWING
<small>THESE DRAWINGS AND SPECIFICATIONS ARE THE PROPERTY OF FOXCONN INTERCONNECT TECHNOLOGY LIMITED AND SHALL NOT BE REPRODUCED, COPIED OR USED IN ANY MANNER WITHOUT THE PRIOR WRITTEN CONSENT OF FOXCONN INTERCONNECT TECHNOLOGY LIMITED.</small>				AH088**-A9**G-**-**	DWG NO.: 317-0000-2397
				APPD: Davy Bu 1/15'16	CHKD: Johnny Tang 1/15'16
				DR: Eliona Zhang 1/15'16	SCALE SHEET REV. N/A 2/4 B



X.±	X.±	UNITS	mm	NAME(INTENDED USE)	FOXCONN®
.X± 0.25	.X±	MAT'L	N/A	DDR 4, 288 PIN	FOXCONN INTERCONNECT TECHNOLOGY LIMITED.
.XX± 0.15	.XX±	FINISH	N/A	0.85mm PITCH,T/H	CLASS: <input type="checkbox"/> SECRET <input type="checkbox"/> CONFIDENTIAL <input checked="" type="checkbox"/> GENERAL
.XXX±	.XXX±	Q'TY	N/A	PART NO.(INTENDED USE)	TITLE: CUSTOMER DRAWING
				AH088**-A9**C-**	DWG NO.: 317-0000-2397
				APPD: Davy Bu 1/15'16	CHKD: Johnny Tang 1/15'16
				DR: Eliana Zhang 1/15'16	SCALE SHEET REV. N/A 3/4 B

SPECIFICATION:

1. PHYSICAL:

- 1-1. HOUSING:
HIGH TEMPERATURE THERMOPLASTIC, UL 94V-0, COLOR: SEE PRODUCT NOMENCLATURE
- 1-2. CONTACT:
COPPER ALLOY, NICKEL PLATING THICKNESS 90 μ " MIN. ON CONTACT AREA, 50 μ " MIN. ON OTHER AREA.
MATTE TIN LEAD FREE PLATING, THICKNESS 100 μ " MIN. AT TAILS, GOLD PLATING AT CONTACT AREA. THICKNESS REFER TO PRODUCT NOMENCLATURE.
- 1-3. EJECTOR:
THERMOPLASTIC, UL 94V-0, COLOR: SEE PRODUCT NOMENCLATURE
- 1-4. METAL BOARD LOCK: COPPER ALLOY.
NICKEL PLATING OVER ALL THICKNESS 50 μ " MIN.
MATTE TIN PLATING OVER NICKEL THICKNESS AT 100 μ " MIN.

2. ELECTRICAL CHARACTERISTICS:

- 2-1. CONTACT CURRENT RATING: 0.75 AMPS MAX.
- 2-2. INSULATION RESISTANCE: 1 MEGOHMS MIN. AT 500 VDC.
- 2-3. DIELECTRIC WITHSTANDING VOLTAGE: 500 VDC AT SEA LEVEL.
- 2-4. LOW LEVEL CONTACT RESISTANCE (DRY CIRCUIT):
INITIAL: 10 MILLIOHMS MAX.
FINAL: 20 MILLIOHMS MAX. AFTER FULL ENVIRONMENTAL TESTING.

3. MECHANICAL CHARACTERISTICS:

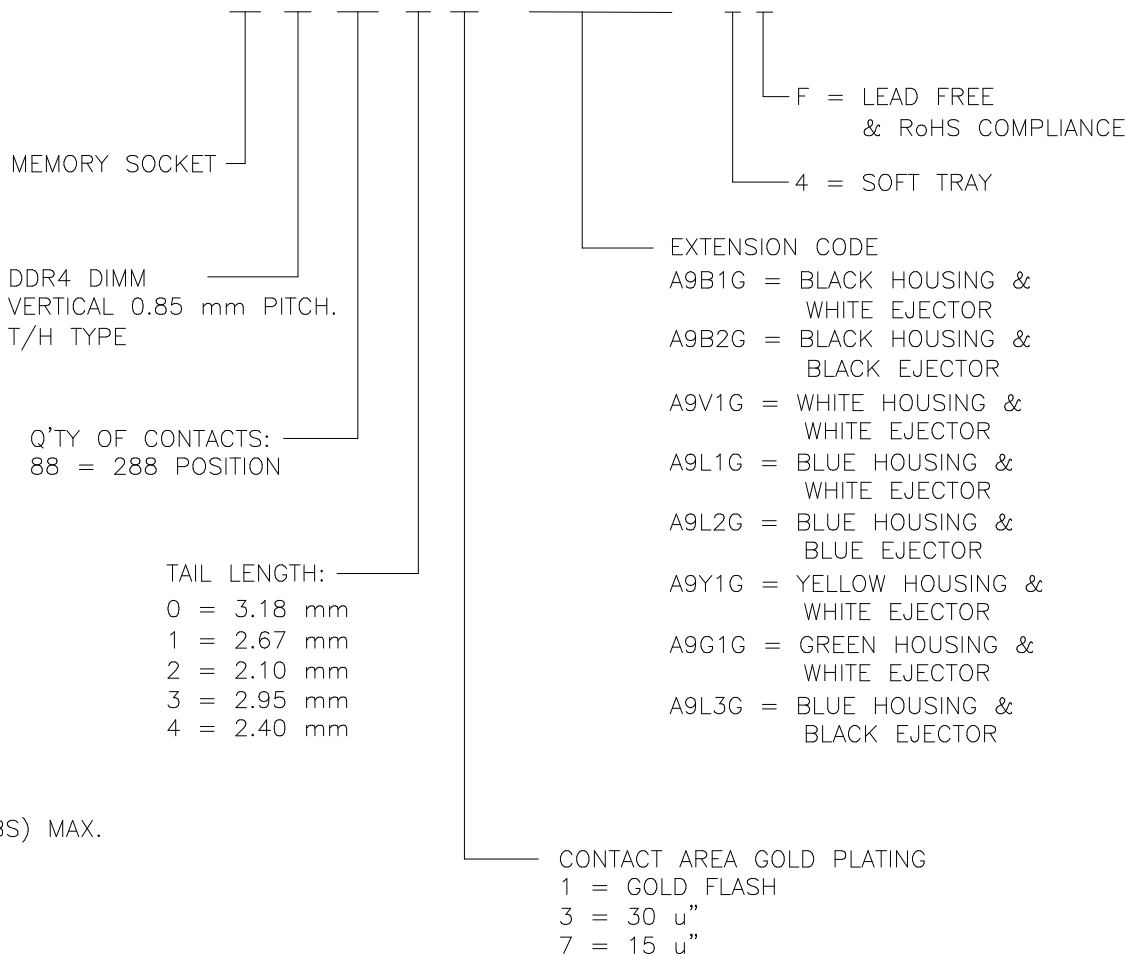
- 3-1. CONTACT RETENTION FORCE: 0.30 KG. (0.66 LBS) MIN. PER PIN.
- 3-2. DURABILITY: 25 CYCLES.
- 3-3. UNMATING FORCE (PER CONTACT PAIR): 14 g MIN.
- 3-4. INSERTION FORCE OF MODULE INTO CONNECTOR: 10.88 KG (24 LBS) MAX.
- 3-5. INSERTION FORCE OF CONNECTOR INTO PCB (WITH THREE BOARD LOCKS): 7.65 KG (17 LBS) MAX.

4. ENVIRONMENTAL CHARACTERISTICS:

- 4-1. SOLDERABILITY: PASSED PER EIA-364-52, CLASS 2, CATEGORY 3.
WAVE SOLDER REFERENCE PROFILE:
PREHEATING TEMPERATURE 25~140 Degree & 80s Min. SOLDERING TEMPERATURE 260 Degree & 5s.
- 4-2. VIBRATION: PASSED PER EIA-364-28.
- 4-3. HUMIDITY: PASSED PER EIA-364-31.
- 4-4. THERMAL SHOCK: PASSED PER EIA-364-32.
- 4-5. OPERATING TEMPERATURE: 0°C TO 85°C.
- 4-6. MECHANICAL SHOCK: PASSED PER EIA-364-27.

PRODUCT NOMENCLATURE:

PRODUCT NO. : A HO 8 8 * * - A 9 * * G - 4 *



REV.	ECN.	NO.	APPD.
------	------	-----	-------

X.±	X.±	UNITS	mm	NAME(INTENDE USE)	FOXCONN® FOXCONN INTERCONNECT TECHNOLOGY LIMITED.
.X± 0.25	.X±	MAT'L	N/A	DDR 4, 288 PIN 0.85mm PITCH,T/H	
.XX± 0.15	.XX±	FINISH	N/A	PART NO.(INTENDE USE)	CLASS: <input type="checkbox"/> SECRET <input type="checkbox"/> CONFIDENTIAL <input checked="" type="checkbox"/> GENERAL
.XXX±	.XXX±	Q'TY	N/A	AH088**-A9**G-**	TITLE: CUSTOMER DRAWING
THESE DRAWINGS AND SPECIFICATIONS ARE THE PROPERTY OF FOXCONN INTERCONNECT TECHNOLOGY LIMITED AND SHALL NOT BE REPRODUCED, COPIED OR USED IN ANY MANNER WITHOUT THE PRIOR WRITTEN CONSENT OF FOXCONN INTERCONNECT TECHNOLOGY LIMITED.				APPD: Davy Bu 1/15'16	DWG NO: 317-0000-2397
				CHKD: Johnny Tang 1/15'16	DR: Eliana Zhang 1/15'16