



BTREF2012A2R221

Multilayer Chip LRC Filter

FEATURES

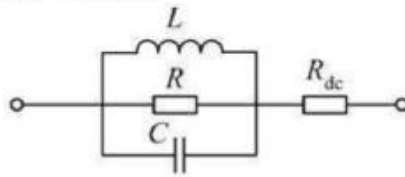
- 0805 Package
- Noise suppression for high speed signal or power line of electric equipments
- Internal silver printed layers and magnetic shielded structures to minimize crosstalk
- High impedance values for various application
- Excellent solderability and heat resistance for reflow soldering
- RoHS compliant in Lead-Free versions



APPLICATIONS

- Cellular Handsets and Accessories
- PDA, Notebooks
- Digital Cameras
- Monitors and Notebook Computers
- Portable Instrumentation
- Communication equipments
- OA equipments
- Bluetooth Multimedia

EQUIVALENT CIRCUIT



ELECTRICAL CHARACTERISTICS

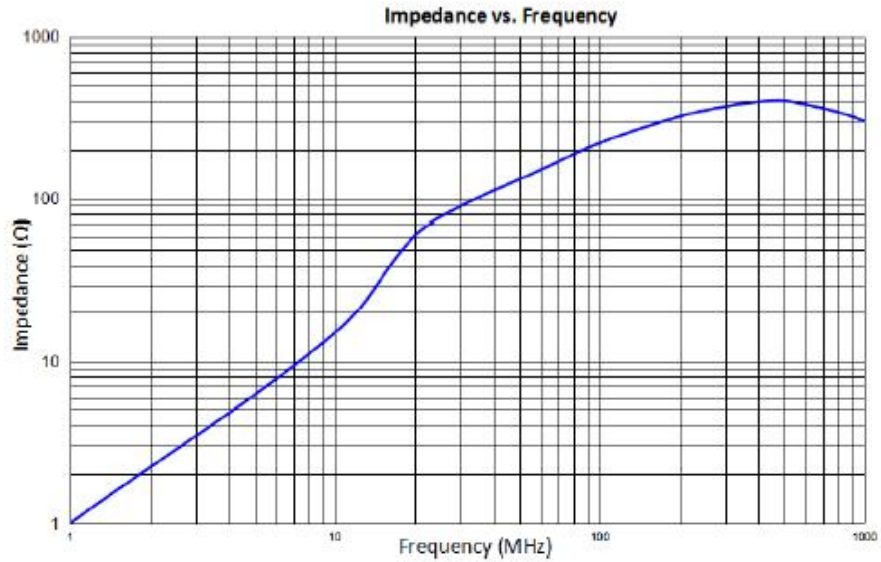
Part Number	Z Test Frequency	Impedance	DC Resistance Max.	Rated Current Max.	Operating Temperature
BTREF2012A2R221	100MHz	220 Ω \pm 25%	0.07 Ω	2000mA	-40 $^{\circ}$ C ~125 $^{\circ}$ C



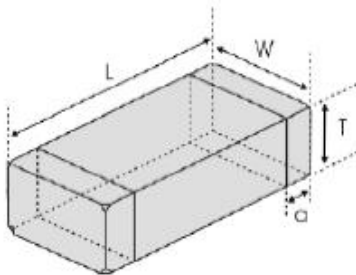
BTREF2012A2R221

Multilayer Chip LRC Filter

TYPICAL CHARACTERISTICS



PACKAGE OUTLINE



DIM	DIMENSIONS		
	MILLIMETERS		
	MIN.	NOM.	MAX.
L	1.8	2.0	2.2
W	1.0	1.2	1.45
T	0.65	0.9	1.10
a	0.2	0.5	0.8

ORDERING INFORMATION

Chip Size	Parts on 7 inch (178 mm) Reel
2.0x1.2x0.9 mm	4,000 PCS