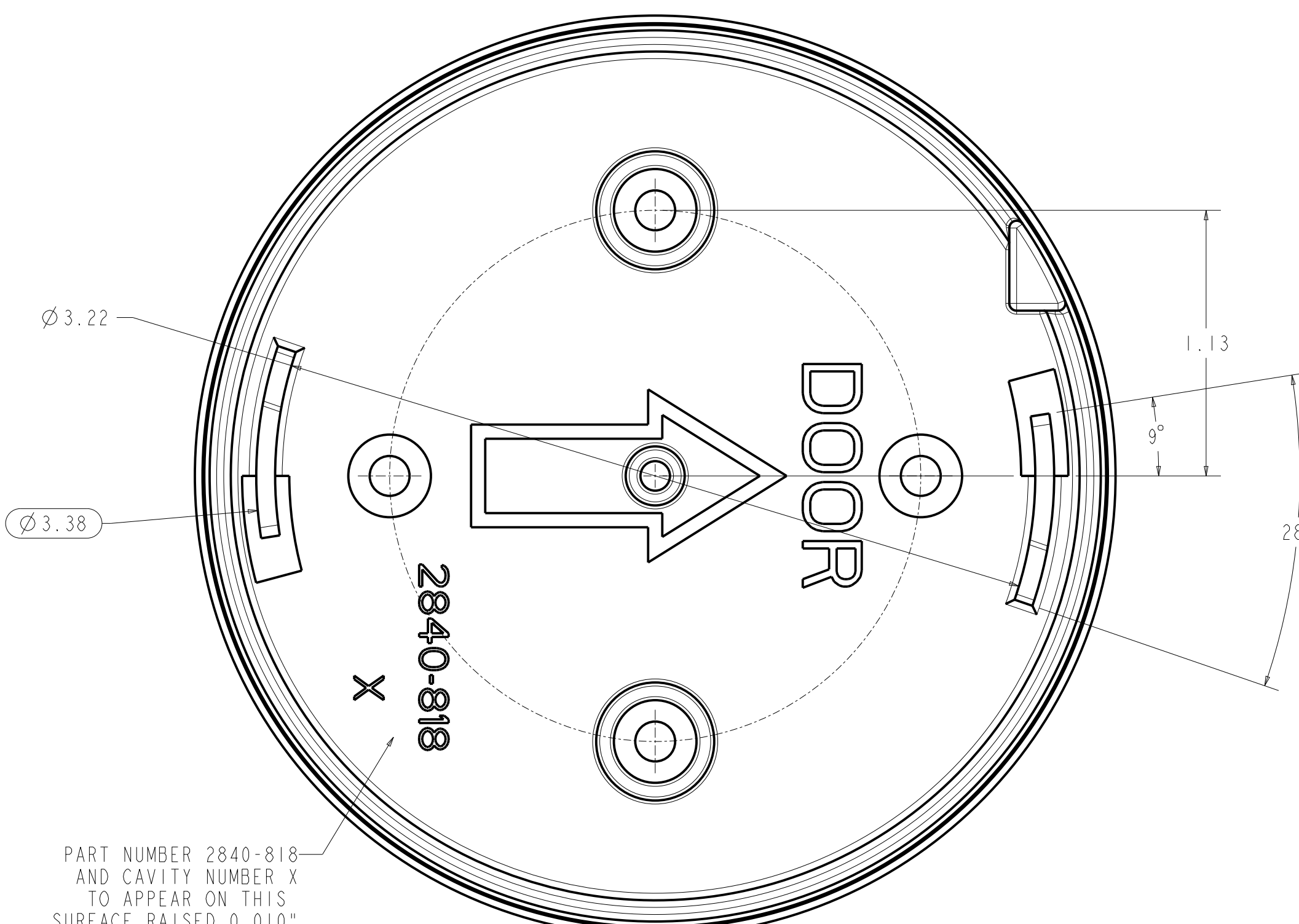


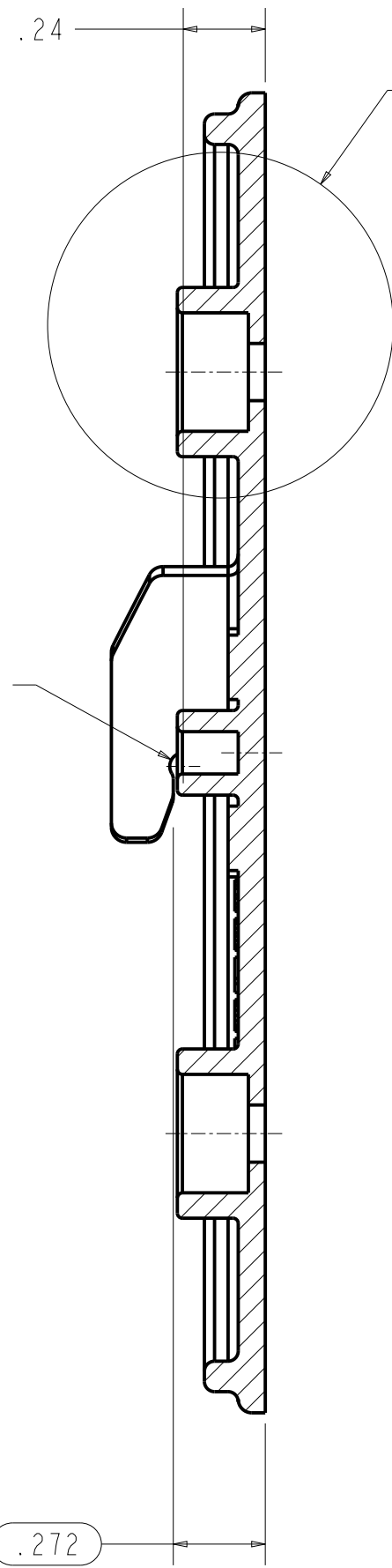
2840-818

DWG. NO.

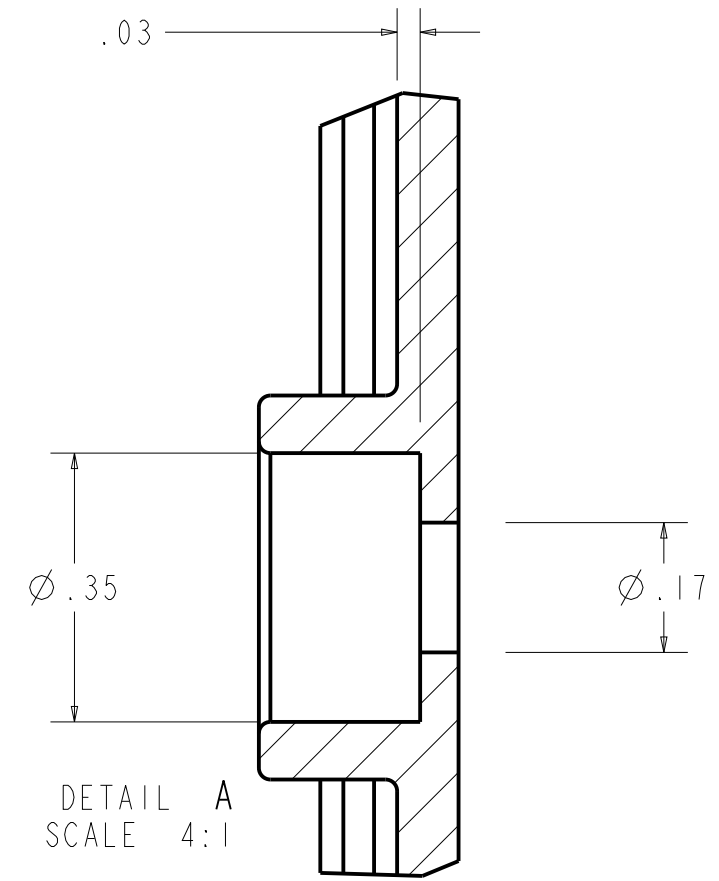
| REV                         | ECO ECR | REVISION          | APRVD. BY | DATE     |
|-----------------------------|---------|-------------------|-----------|----------|
| A                           | 80860   | INITIAL RELEASE   | MB        | 12/23/13 |
| B                           | 93868   | ADD CAVITY NUMBER | MDR       | 04/02/24 |
| APPROVAL SIGNATURES ON FILE |         |                   |           |          |



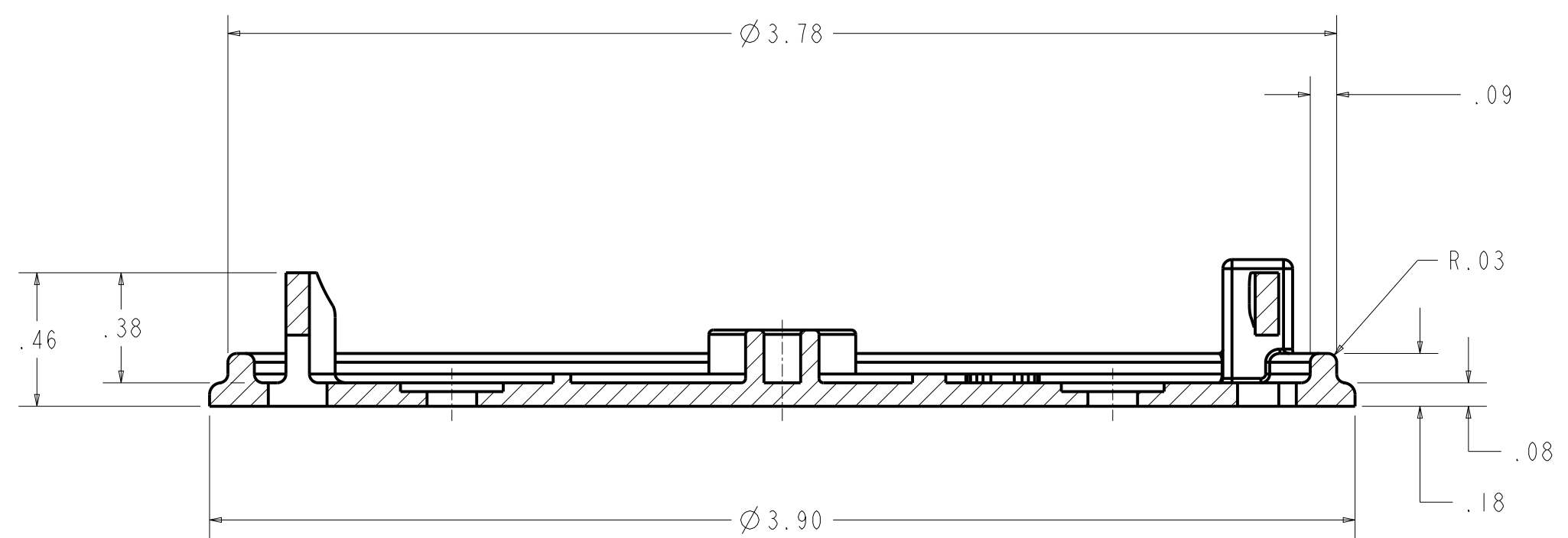
PART NUMBER 2840-818  
AND CAVITY NUMBER X  
TO APPEAR ON THIS  
SURFACE RAISED 0.010"



SECTION A-A



- NOTES:
- MATERIAL:  
ABS, CHI MEI PA-717C  
COLOR: STAR WHITE  
MOLD SHRINKAGE: .006
  - FINISH: CAVITY: SPE/SPI #B-3  
CORE: SPE/SPI #B-3
  - MAXIMUM PART FLASH .005
  - MAXIMUM PART MISMATCH .005
  - ELLIPTICAL BOXED DIMENSIONS REQUIRE DEMONSTRATED PROCESS CAPABILITY (Cpk/Ppk) ≥ 1.33 WITH ACCEPTABLE GAGE R & R.  
1st ARTICLE INSPECTION: MEASURE ALL DIMENSIONS (1 pc)
  - PART VOLUME = 1.132 in<sup>3</sup>
  - PART WEIGHT = 19.3 GR (or 0.043 LB)
  - PART TO BE FREE OF DIRT, GREASE, OIL OR ANY FOREIGN MATERIAL
  - CHECK CRITICAL DIMENSIONS FROM EACH CAVITY AT THE BEGINNING OF EACH PRODUCTION RUN AND AT THE START OF EACH SHIFT.
  - EACH MATERIAL LOT TO BE NOTCHED IZOD TESTED PER ASTM D256, ISO 180. OR CERTIFICATE OF COMPLIANCE ON FILE FROM SUPPLIER.
  - NO CONTAMINATION PARTICLES, FLOW LINES, OR BURN MARKS ALLOWED ON "A" SURFACES. 3 PER INCH PERMITTED ON "B" SURFACES. CHECK EACH CAVITY AT THE BEGINNING OF EACH PRODUCTION RUN AND AT THE START OF EACH SHIFT.
  - PART MUST MATCH GOJO APPROVED COLOR CHIP. CHECK EACH CAVITY AT THE BEGINNING OF EACH PRODUCTION RUN AND AT THE START OF EACH SHIFT.



SECTION B-B

INTERPRET DRAWING PER ASME Y14.100 UNLESS OTHERWISE SPECIFIED DIMENSIONS ARE IN INCHES

THIRD ANGLE PROJECTION

|   |                 |                           |                               |
|---|-----------------|---------------------------|-------------------------------|
| TITLE: <b>MOUNT:AMS ACTIVITY COUNTER</b>  |                 | STATE: <b>Development</b> |                               |
| THIS DRAWING IS THE PROPERTY OF <b>GOJO INDUSTRIES, INC.</b>  |                 |                           |                               |
| ONE GOJO PLAZA, SUITE 500 AKRON, OH 44311 AND IS LOANED UPON CONDITION THAT IT IS NOT TO BE REPRODUCED OR COPIED IN WHOLE OR PART, OR USED FOR FURNISHING INFORMATION TO OTHERS OR FOR ANY OTHER PURPOSE DETRIMENTAL TO THE INTEREST OF GOJO INDUSTRIES, INC. AND WILL BE RETURNED UPON REQUEST |                 |                           |                               |
| TOLERANCES:   | DECIMALS:       | DRAWN BY: M. MOORE        | SCALE 2:1                     |
|   | X.X = ±0.1      | DATE: 11/27/12            | DO NOT SCALE                  |
|   | .X.XX = ±0.01   | CHKD BY: M. BULLOCK       | SHEET   of                    |
|   | .X.XXX = ±0.005 | DATE: 11/27/12            | SIZE DWG. NO. <b>2840-818</b> |
| FRACTIONS:  | ANGLES:         |                           | REV. <b>B</b>                 |
| X/XX = ±1/32  | X.X = ±0.5      |                           |                               |
|   | X.XX = ±0.50    |                           |                               |