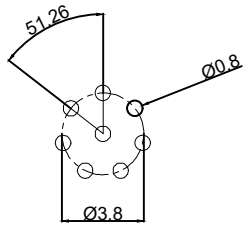
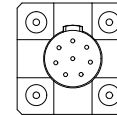
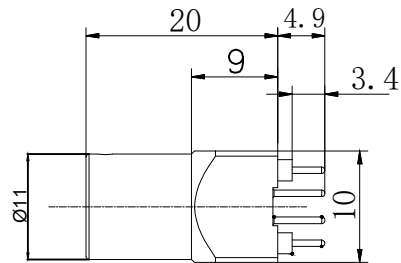
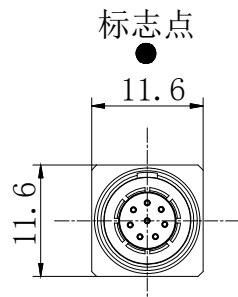
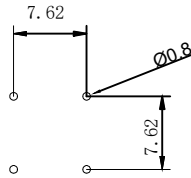


1.FIGURE AND DIMENSIONS(视图及尺寸)



针芯PCB板开孔尺寸



PCB板外壳固定开孔尺寸

1.Mating(插拔次数)	5000次
2.Working Temperature (温度)	-55~+150°C
3.IP Rating (防护级别)	IP 50
4.Contact plating material(触点电镀材料)	黄铜镀金
5.Current rating (额定电流)	3.8
6.Working Voltage (工作电压)	750V
7.shell material(壳体材质)	黄铜镀铬
8. Salt spray test (盐雾测试)	72H

版本			TITLE	DRAWING NO.		REV.
REVA4			PART NO.	ZZG. 1B. P08. CLN-49		A0
REVA3				UNIT	mm	
REVA2				SCALE	Free	
REVA1				SHEET	10F N	
DRAW		DATE		USE	XKB INDUSTRIAL PRECISION CO.,LIMITED	
CHECK		DATE				
APPR' D		DATE				