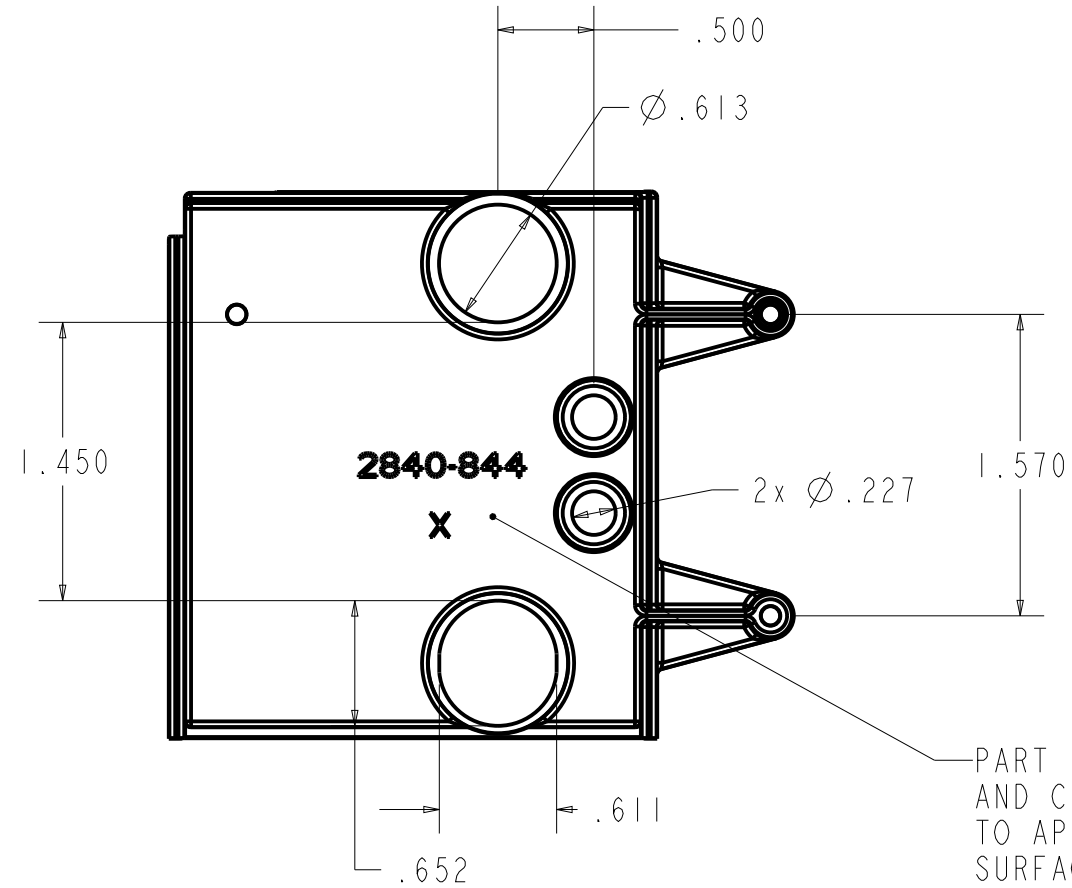
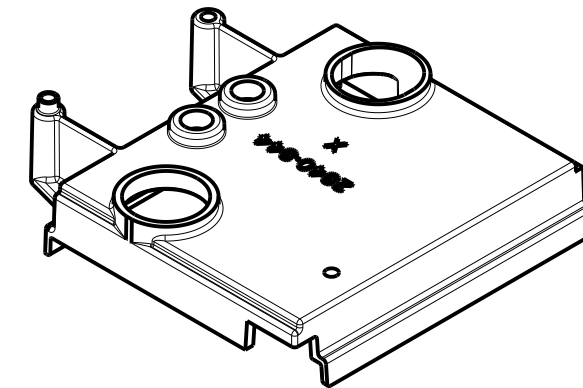
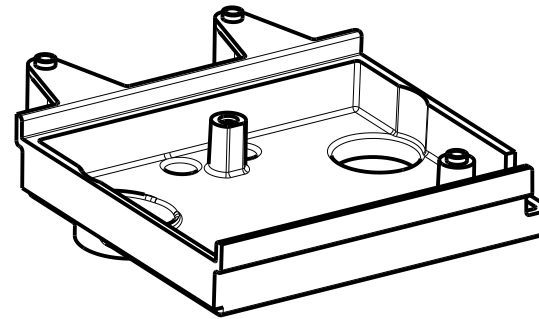
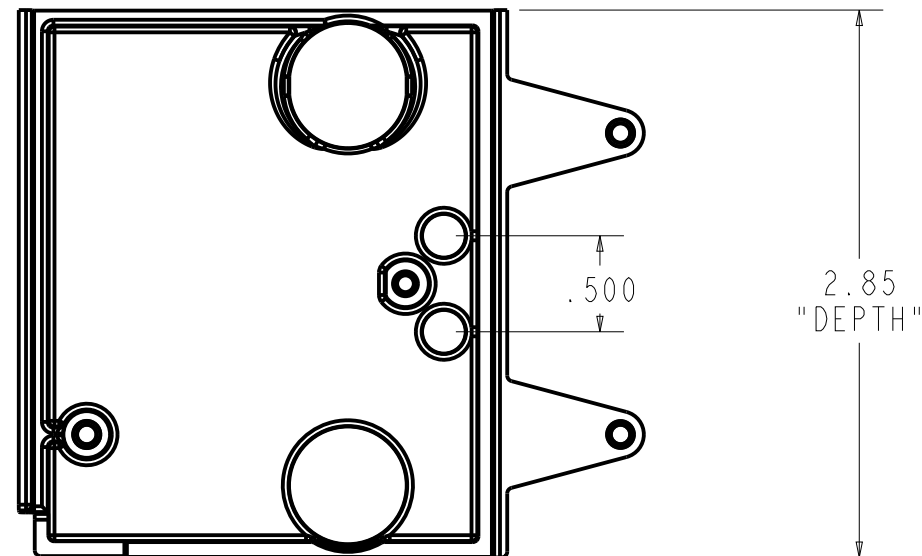
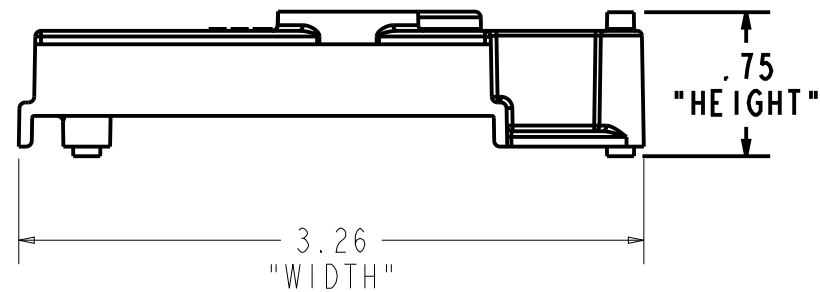


2840-844

DWG. NO.



PART NUMBER 2840-844  
AND CAVITY NUMBER X  
TO APPEAR ON THIS  
SURFACE RAISED 0.010"



**Component Specification  
MISC. PLASTIC**

**SPECIFICATION PROPERTIES**

Material:	ABS
Process:	INJECTION
Primary Resin:	ABS
Primary Resin Identification:	
Primary Resin Manufacturer:	
Alternate Resin:	N/A
Color:	GRAY
Coating or Treatment:	N/A
Part Weight:	16.06 GR
Part Volume:	0.942 IN <sup>3</sup>
MAXIMUM PART FLASH:	.005"
MAXIMUM PART MISMATCH:	.005"
Total Recycled Content:	None
Post-Consumer Recycled Content:	None
Additional Information:	
TSQ Reviewer:	XXX
Contract Manufacturers Part No.:	

APPROVAL SIGNATURES ON FILE

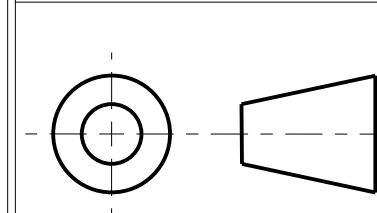
REV	ECN ECO	REVISION	APRVD. BY	DATE
A		INITIAL RELEASED	DRH	04/19/23

NOTES:

1. MATERIAL: ABS  
COLOR: GRAY
2. FINISH: CAVITY: SPE/SPI B-2  
CORE: SPE/SPI B-2
3. MAXIMUM PART FLASH .005
4. MAXIMUM PART MISMATCH .005
5. PART WEIGHT = 16.06 GR (or 0.04 LB)
6. OVAL BOXED DIMENSIONS ARE CPK DIMENSION.
6. PART TO BE FREE OF DIRT, GREASE, OIL OR ANY FOREIGN MATERIAL.

INTERPRET DRAWING PER  
ASME Y14.100  
UNLESS OTHERWISE SPECIFIED  
DIMENSIONS ARE IN INCHES

THIRD ANGLE PROJECTION



TITLE: <b>FRAME : AMS 3</b>		Development	
STATE: CONFIDENTIAL ©2023 GOJO Industries, Inc. All Rights Reserved.			
THIS DRAWING IS THE PROPERTY OF <b>GOJO INDUSTRIES, INC.</b> ONE GOJO PLAZA, SUITE 500 AKRON, OH 44311 AND IS LOANED UPON CONDITION THAT IT IS NOT TO BE REPRODUCED OR COPIED IN WHOLE OR PART, OR USED FOR FURNISHING INFORMATION TO OTHERS OR FOR ANY OTHER PURPOSE DETRIMENTAL TO THE INTEREST OF GOJO INDUSTRIES, INC. AND WILL BE RETURNED UPON REQUEST			
TOLERANCES:	DECIMALS: X.X = ±0.1 .X.XX = ±0.01 .X.XXX = ±0.005	FRACTIONS: X/XX = ±1/32	ANGLES: X.X = ±0.5 X.XX = ±0.50
DATE: 04/19/23	CHKD BY: M. BULLOCK	DATE: 04/19/23	SCALE 1:1
DATE: 04/19/23	DATE: 04/19/23	DATE: 04/19/23	SHEET
DATE: 04/19/23	DATE: 04/19/23	DATE: 04/19/23	DO NOT SCALE
DATE: 04/19/23	DATE: 04/19/23	DATE: 04/19/23	1 of 1
DATE: 04/19/23	DATE: 04/19/23	DATE: 04/19/23	REV. A
DATE: 04/19/23	DATE: 04/19/23	DATE: 04/19/23	2840-844