

2840-837

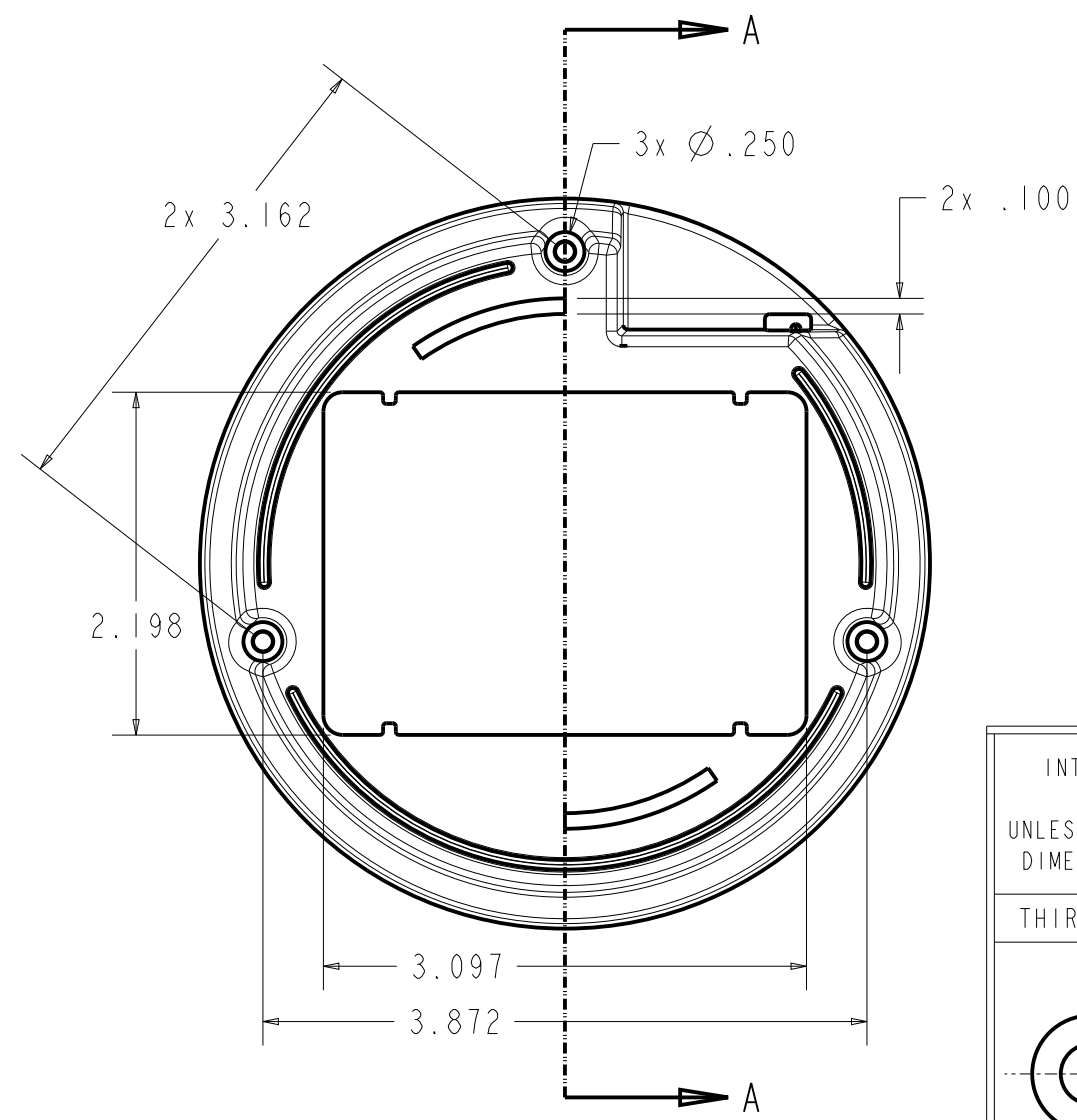
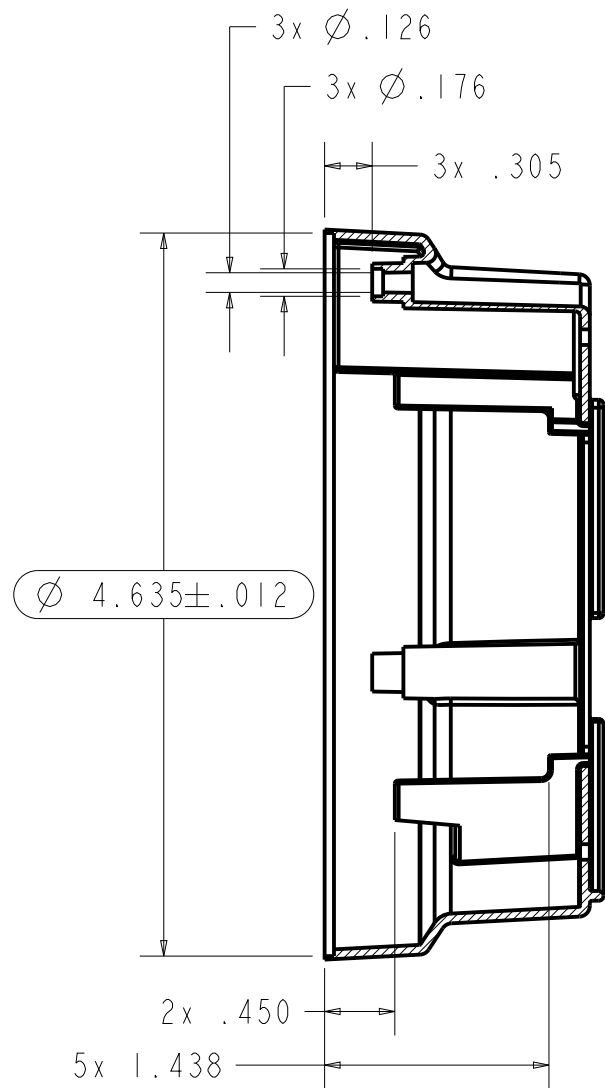
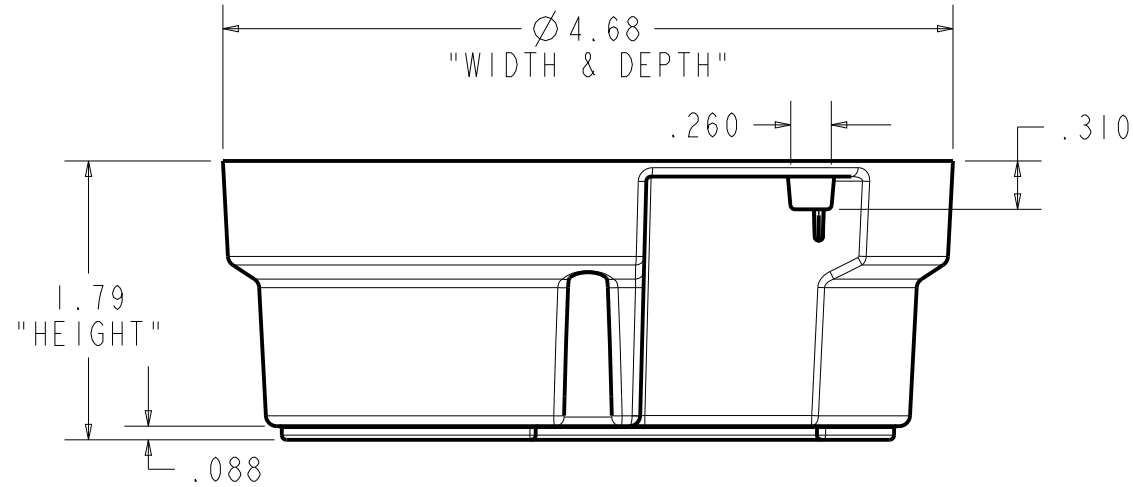
DWG. NO.

REV	ECN	ECO	REVISION	APRVD. BY	DATE
A	93868		INITIAL RELEASED	MRD	04/02/24
APPROVAL SIGNATURES ON FILE					

Component Specification
MISC. PLASTIC

SPECIFICATION PROPERTIES

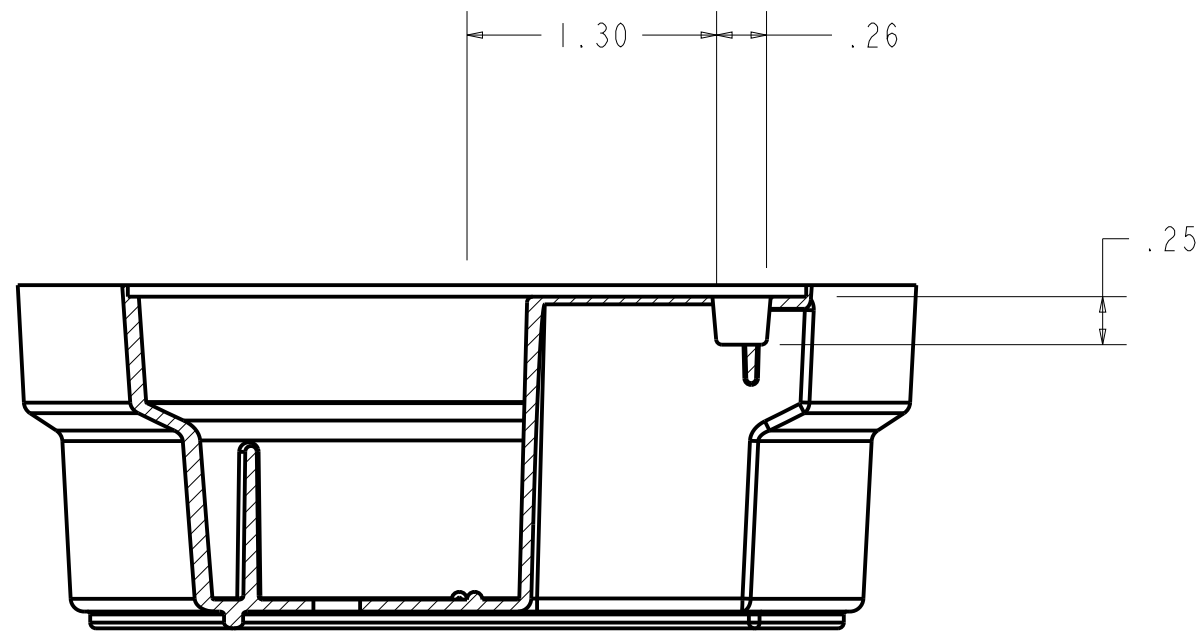
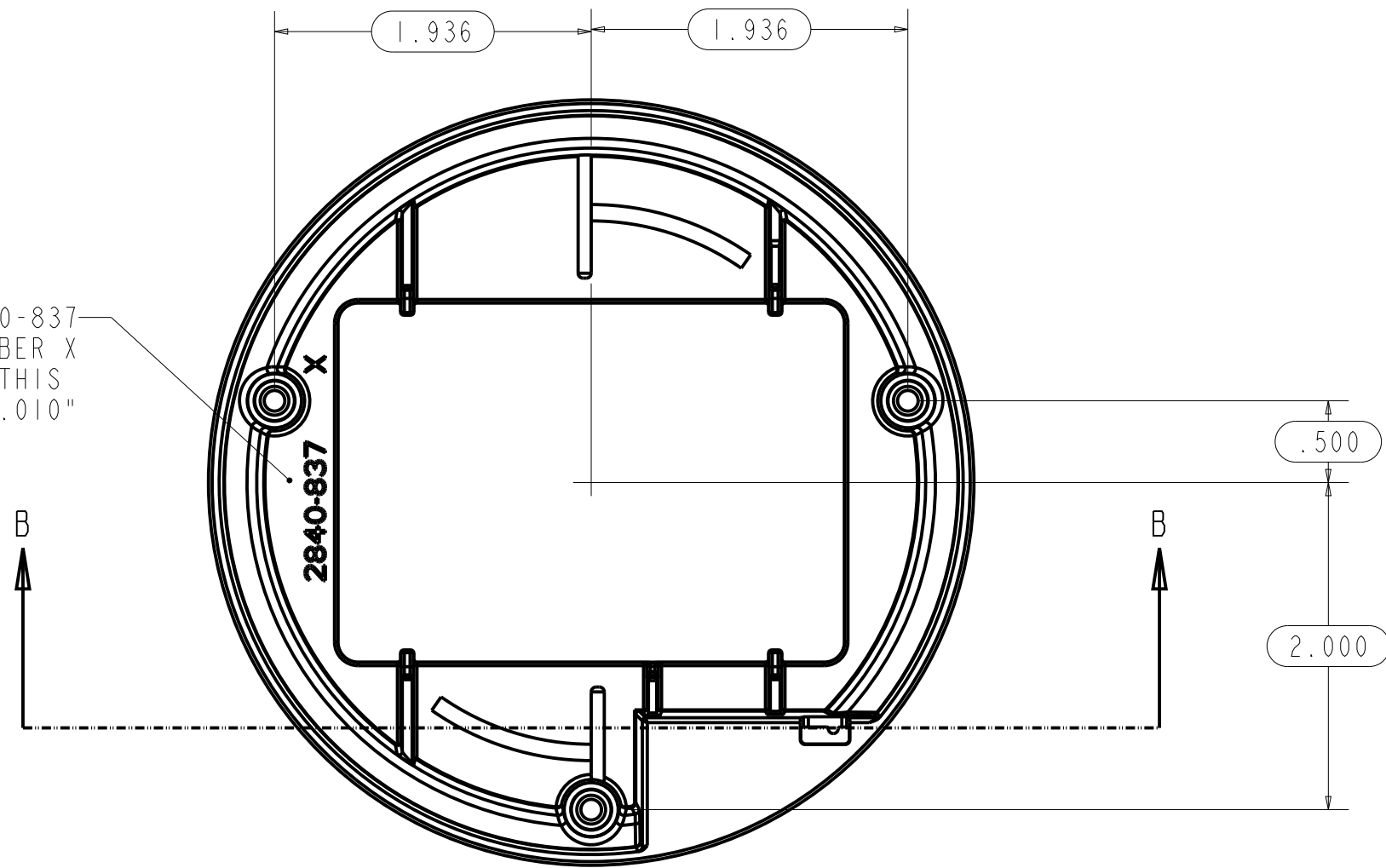
Material:	ABS, CHI MEI PA-717C
Process:	INJECTION
Primary Resin:	ABS
Primary Resin Identification:	PA-717C
Primary Resin Manufacturer:	CHI MEI
Alternate Resin:	N/A
Color:	STAR WHITE
Coating or Treatment:	N/A
Part Weight:	35.32 GR
Part Volume:	2.071 IN ³
MAXIMUM PART FLASH:	.005"
MAXIMUM PART MISMATCH:	.005"
Total Recycled Content:	None
Post-Consumer Recycled Content:	None
Additional Information:	
TSG Reviewer:	XXX
Contract Manufacturers Part No.:	



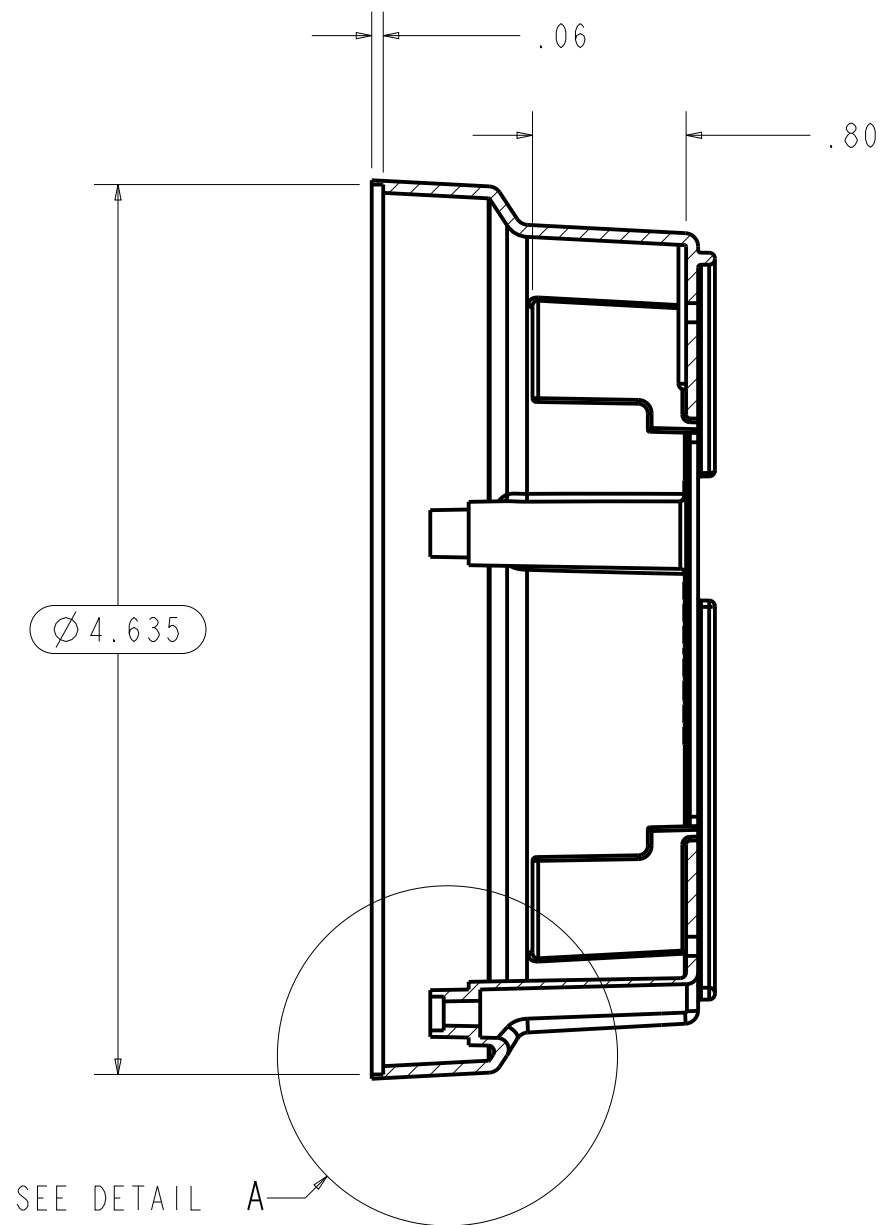
- NOTES:
- MATERIAL: ABS, CHI MEI PA-717C
COLOR: STAR WHITE
 - FINISH: CAVITY: SPE/SPI D-3
CORE: SPE/SPI B-3
 - MAXIMUM PART FLASH .005
 - MAXIMUM PART MISMATCH .005
 - PART WEIGHT = 35.318 GR (or 0.078 LB)
 - OVAL BOXED DIMENSIONS ARE CPK DIMENSION.
 - PART TO BE FREE OF DIRT, GREASE, OIL OR ANY FOREIGN MATERIAL.

INTERPRET DRAWING PER ASME Y14.100 UNLESS OTHERWISE SPECIFIED DIMENSIONS ARE IN INCHES THIRD ANGLE PROJECTION 	TITLE: BASE : AMS 3 STATE: Development CONFIDENTIAL ©2023 GOJO Industries, Inc. All Rights Reserved.		
	THIS DRAWING IS THE PROPERTY OF GOJO INDUSTRIES, INC. ONE GOJO PLAZA, SUITE 500 AKRON, OH 44311 AND IS LOANED UPON CONDITION THAT IT IS NOT TO BE REPRODUCED OR COPIED IN WHOLE OR PART, OR USED FOR FURNISHING INFORMATION TO OTHERS OR FOR ANY OTHER PURPOSE DETRIMENTAL TO THE INTEREST OF GOJO INDUSTRIES, INC. AND WILL BE RETURNED UPON REQUEST		
TOLERANCES: DECIMALS: .X.X = ±0.1 .X.XX = ±0.01 .X.XXX = ±0.005 FRACTIONS: X/XX = ±1/32 ANGLES: .X.X = ±0.5 .X.XX = ±0.50	DRAWN BY: D. HARRIS DATE: 04/19/23	SCALE 13:16 DO NOT SCALE	SHEET 1 of 2
	CHKD BY: M. BULLOCK DATE: 04/19/23	SIZE B	DWG. NO. 2840-837

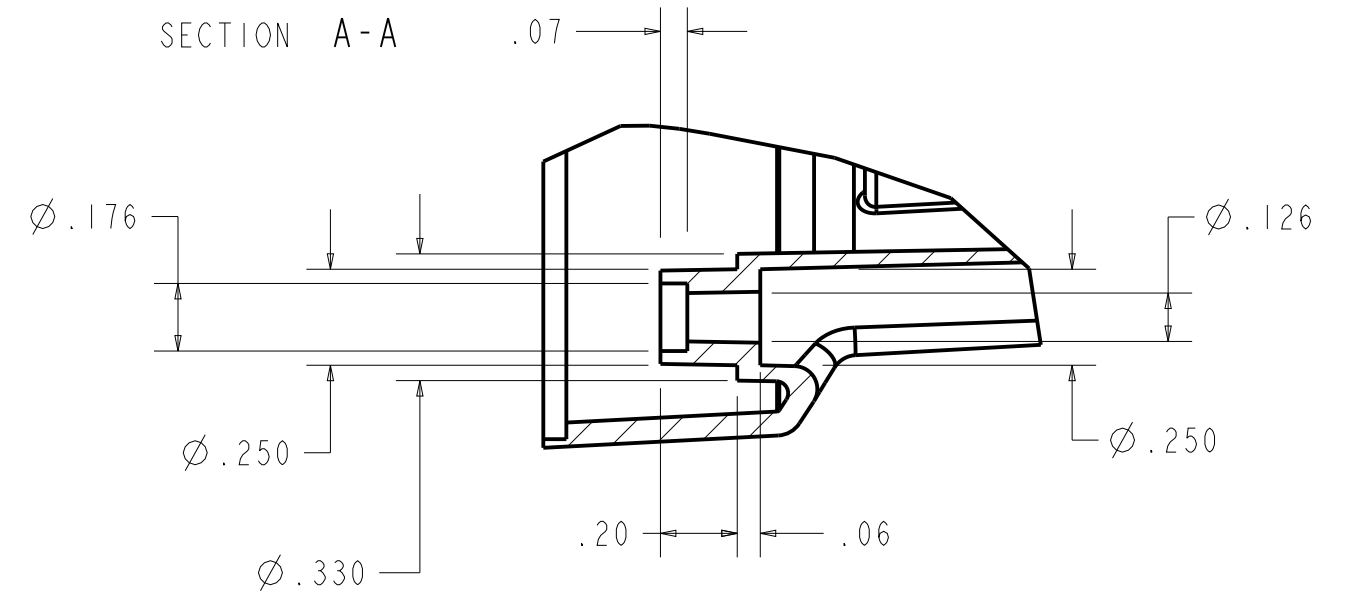
PART NUMBER 2840-837
AND CAVITY NUMBER X
TO APPEAR ON THIS
SURFACE RAISED 0.010"



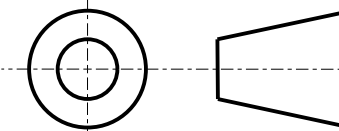
SECTION B-B



SECTION A-A



DETAIL A
SCALE 2:1

INTERPRET DRAWING PER ASME Y14.100 UNLESS OTHERWISE SPECIFIED DIMENSIONS ARE IN INCHES THIRD ANGLE PROJECTION 	TITLE: STATE:	BASE : AMS 3 Development		
	TOLERANCES: DECIMALS: X.X = ±0.1 X.XX = ±0.01 X.XXX = ±0.005 FRACTIONS: X/XX = ±1/32 ANGLES: X.X = ±0.5 X.XX = ±0.50	CONFIDENTIAL ©2012 GOJO Industries, Inc. All Rights Reserved. THIS DRAWING IS THE PROPERTY OF GOJO INDUSTRIES, INC. <small>ONE GOJO PLAZA, SUITE 500 AKRON, OH 44311 AND IS LOANED UPON CONDITION THAT IT IS NOT TO BE REPRODUCED OR COPIED IN WHOLE OR PART, OR USED FOR FURNISHING INFORMATION TO OTHERS OR FOR ANY OTHER PURPOSE DETRIMENTAL TO THE INTEREST OF GOJO INDUSTRIES, INC. AND WILL BE RETURNED UPON REQUEST</small>		
	DRAWN BY: D. HARRIS DATE: 04/19/23	SCALE 1:1 DO NOT SCALE	SHEET 2 of 2	
	CHKD BY: M. BULLOCK DATE: 04/19/23	SIZE c	DWG. NO. 2840-837	REV. A