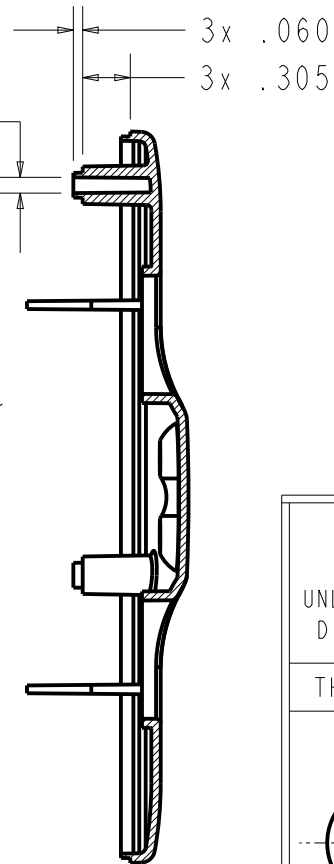
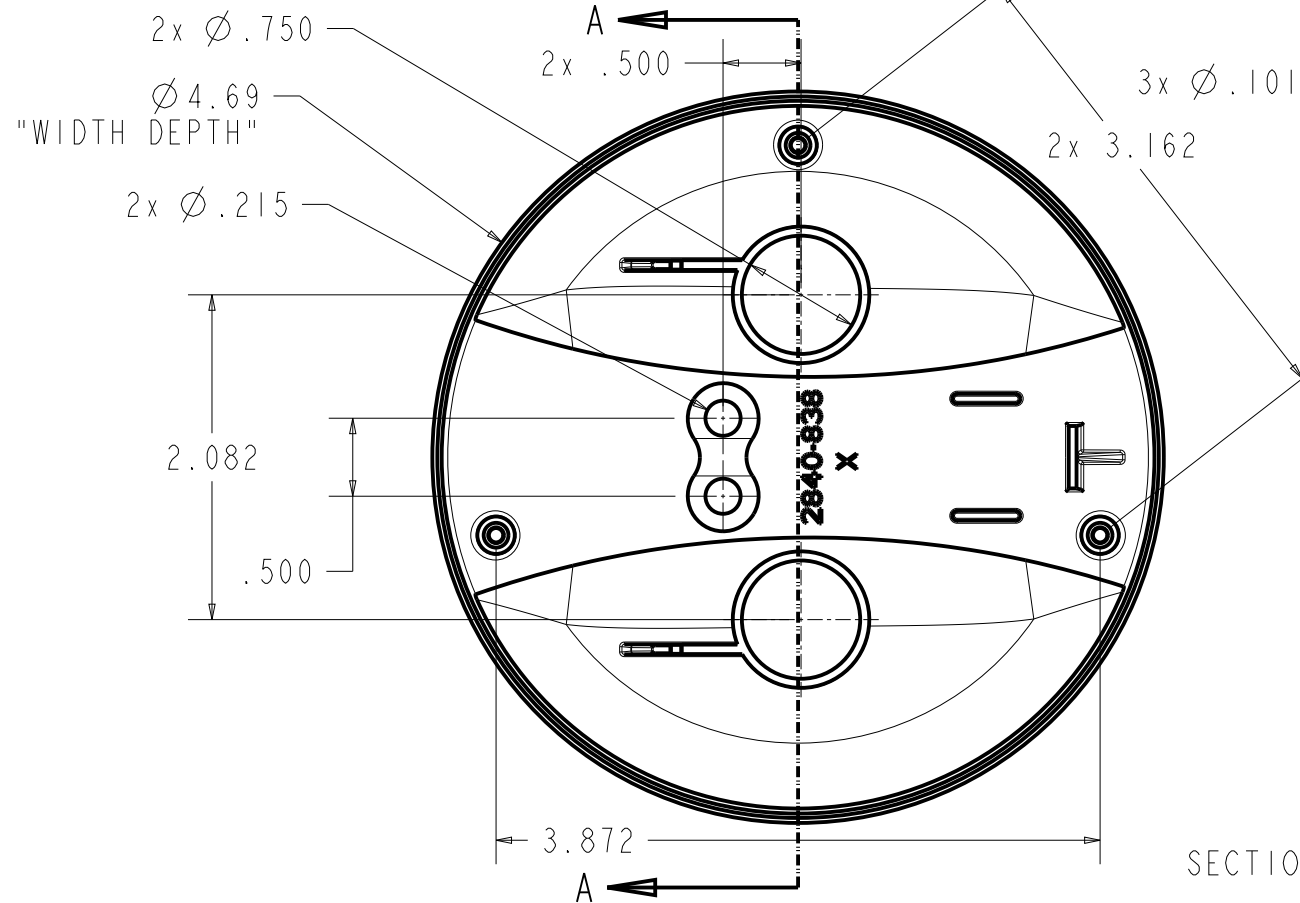
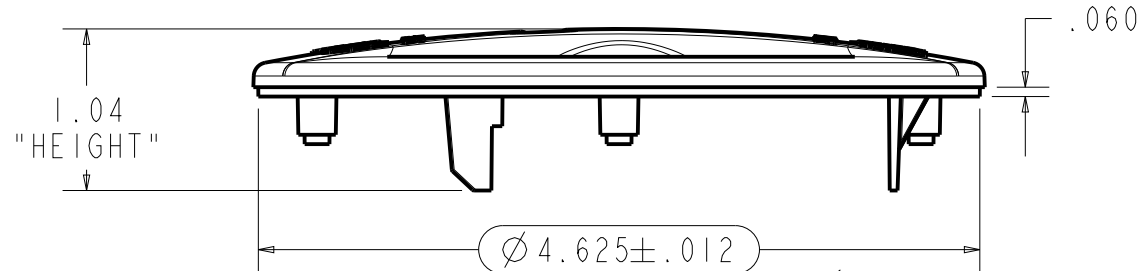
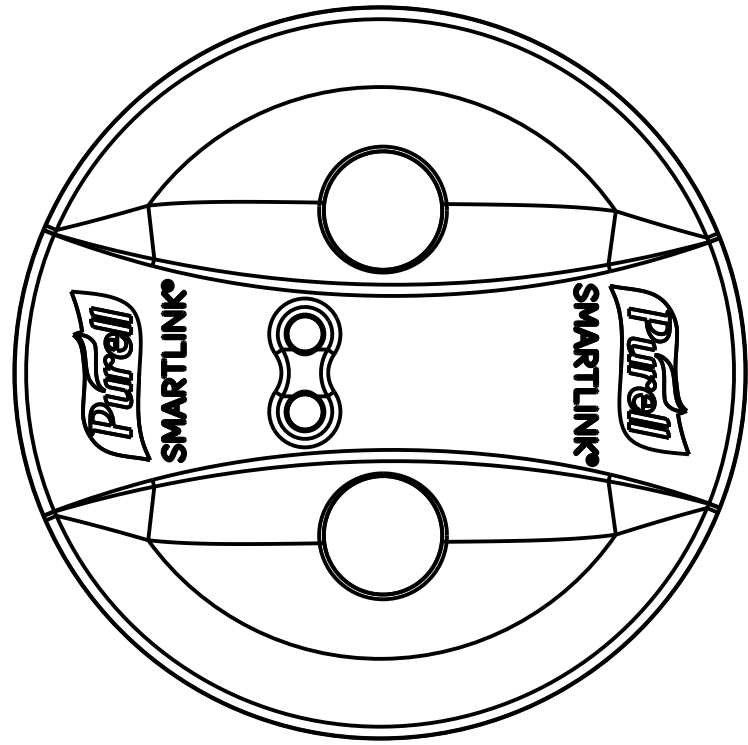


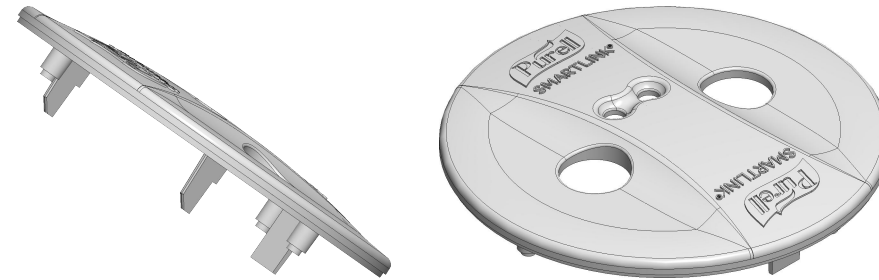
2840-838

DWG. NO.



SECTION A-A

| REV | ECN | ECO | REVISION | APRVD. BY | DATE |
|-----------------------------|-----|-------|------------------|-----------|----------|
| A | | 93868 | INITIAL RELEASED | MRD | 04/02/24 |
| APPROVAL SIGNATURES ON FILE | | | | | |



Component Specification
MISC. PLASTIC

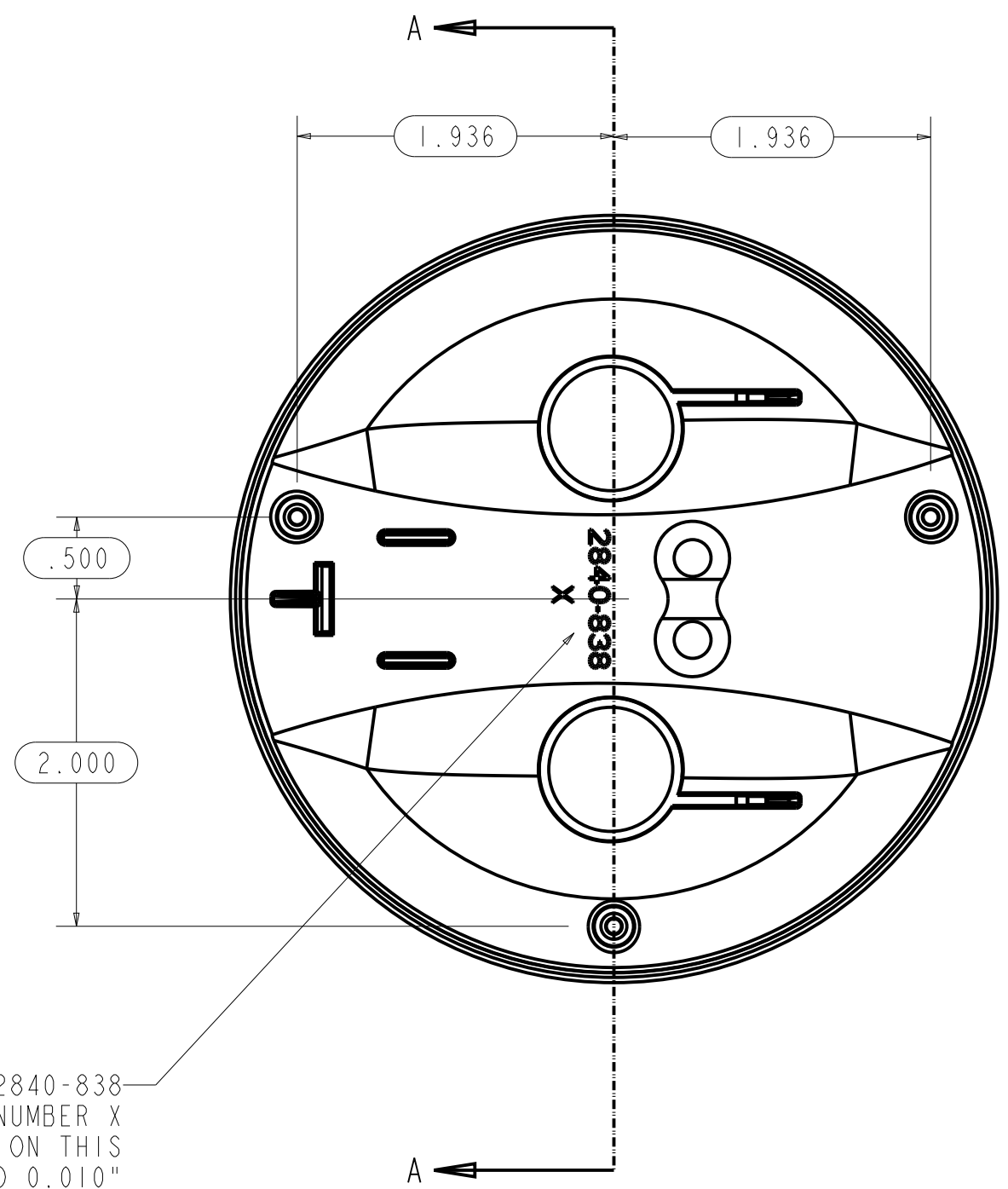
SPECIFICATION PROPERTIES

| | |
|----------------------------------|-----------------------|
| Material: | ABS, CHI MEI PA-717C |
| Process: | INJECTION |
| Primary Resin: | ABS |
| Primary Resin Identification: | PA-717C |
| Primary Resin Manufacturer: | CHI MEI |
| Alternate Resin: | N/A |
| Color: | STAR WHITE |
| Coating or Treatment: | N/A |
| Part Weight: | 21.22 GR |
| Part Volume: | 1.244 IN ³ |
| MAXIMUM PART FLASH: | .005" |
| MAXIMUM PART MISMATCH: | .005" |
| Total Recycled Content: | None |
| Post-Consumer Recycled Content: | None |
| Additional Information: | |
| TSG Reviewer: | XXX |
| Contract Manufacturers Part No.: | |

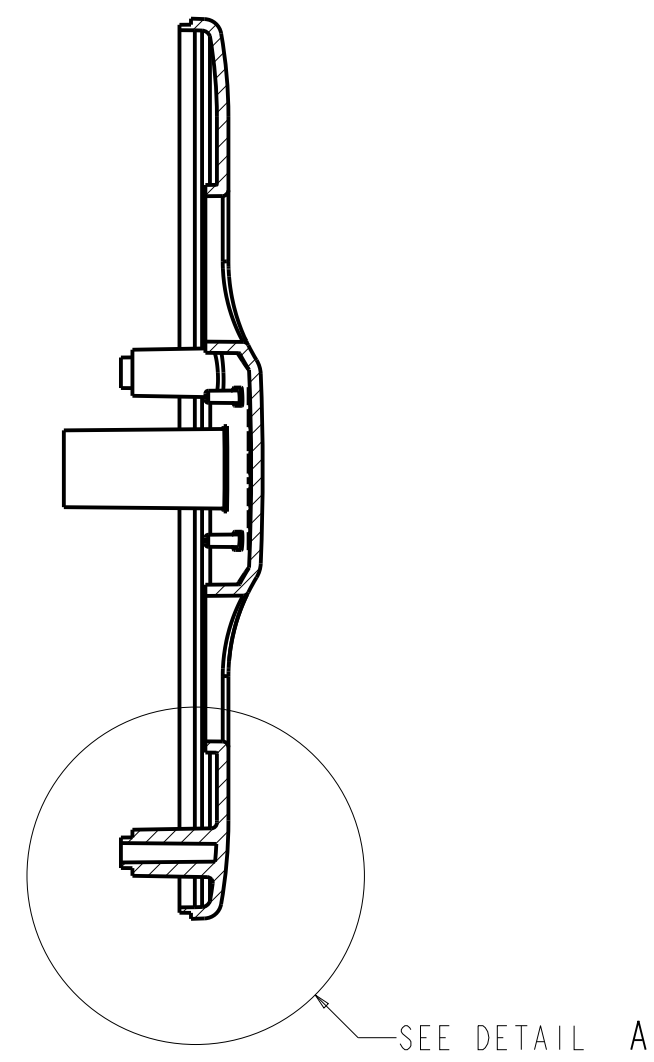
NOTES:

- MATERIAL: ABS, CHI MEI PA-717C
COLOR: STAR WHITE
- FINISH: CAVITY: SPE/SPI D-3
CORE: SPE/SPI B-3
- MAXIMUM PART FLASH .005
- MAXIMUM PART MISMATCH .005
- PART WEIGHT = 21.216 GR (or 0.047 LB)
6. OVAL BOXED DIMENSIONS ARE CPK DIMENSION.
6. PART TO BE FREE OF DIRT, GREASE, OIL OR ANY FOREIGN MATERIAL.

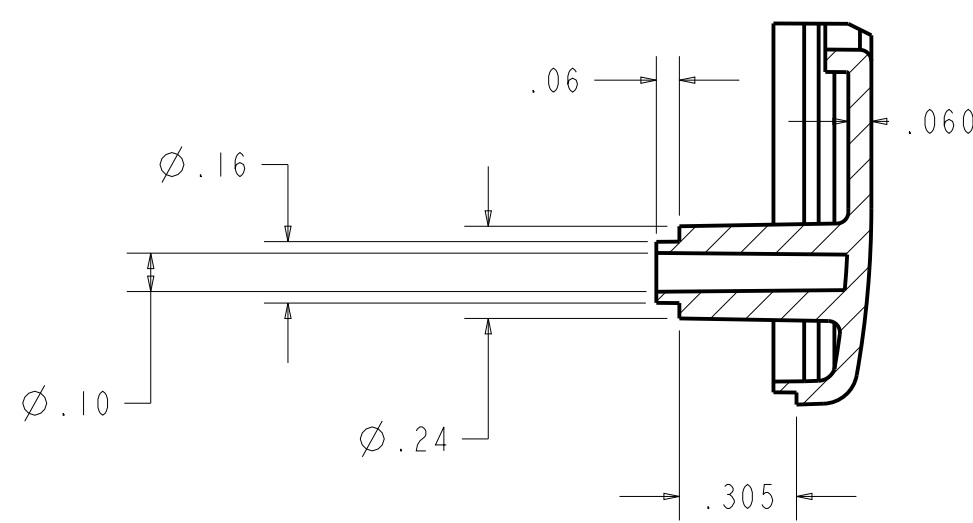
| | | | | |
|---|---|---------------------------------------|--|------------------|
| INTERPRET DRAWING PER ASME Y14.100 UNLESS OTHERWISE SPECIFIED DIMENSIONS ARE IN INCHES THIRD ANGLE PROJECTION | TITLE: COVER : AMS 3 STATE: Development | | | |
| | CONFIDENTIAL ©2023 GOJO Industries, Inc. All Rights Reserved. THIS DRAWING IS THE PROPERTY OF GOJO INDUSTRIES, INC. ONE GOJO PLAZA, SUITE 500 AKRON, OH 44311 AND IS LOANED UPON CONDITION THAT IT IS NOT TO BE REPRODUCED OR COPIED IN WHOLE OR PART, OR USED FOR FURNISHING INFORMATION TO OTHERS OR FOR ANY OTHER PURPOSE DETRIMENTAL TO THE INTEREST OF GOJO INDUSTRIES, INC. AND WILL BE RETURNED UPON REQUEST | | | |
| | TOLERANCES: DECIMALS: .X.X = ±0.1 .X.XX = ±0.01 .X.XXX = ±0.005 FRACTIONS: X/XX = ±1/32 ANGLES: .X.X = ±0.5° .X.XX = ±0.5° | DRAWN BY: D. HARRIS DATE: 04/19/23 | SCALE 13:16 SHEET DO NOT SCALE 1 of 2 | |
| | CHKD BY: M. BULLOCK DATE: 04/19/23 | SIZE B | DWG. NO. 2840-838 | REV. A |



PART NUMBER 2840-838
AND CAVITY NUMBER X
TO APPEAR ON THIS
SURFACE RAISED 0.010"



SECTION A-A



DETAIL A
SCALE 2:1