

客户图

NOTES:

1. FINISH:

- 1.1 HOUSING: LCP WHITE ,UL94V-0.
- 1.2 CONTACT: COPPER ALLOY,GOLD (SEE P/N) PLATED IN CONTACT AREA, GOLD FLASH PLATED IN SOLDER AREA, 50u" MIN. NICKEL UNDERPLATED OVERALL.
- 1.3 CAP: SUS304 3/4H.

2. ELECTRICAL:

- 2.1 CURRENT RATING:0.5A;
- 2.2 DIELECTRIC WITHSTANDING VOLTAGE: 500V AC/MINUTE.
- 2.3 CONTACT RESISTANCE: 50mΩ MAX.
- 2.4 INSULATION RESISTANCE: 500V DC/0.1S/1000MΩ
- 2.5 OPERATION TEMPERATURE:-40°C TO +105°C.

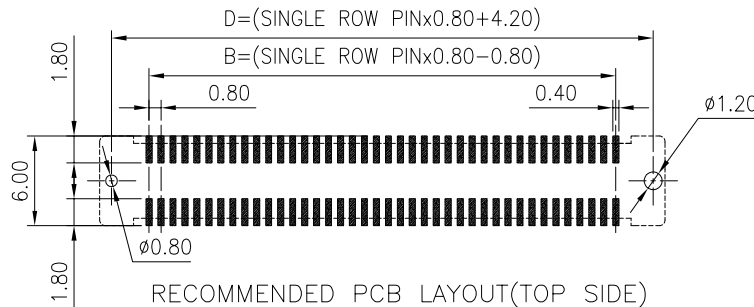
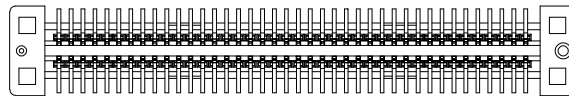
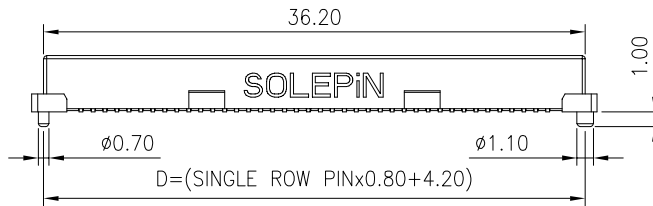
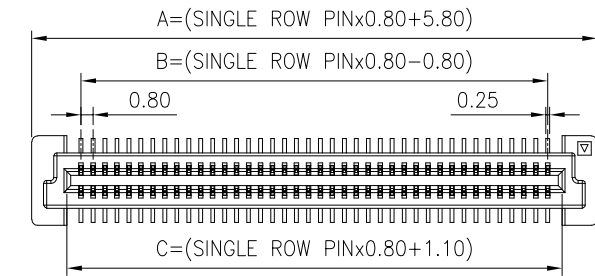
3.ORDER INFORMATION:

66C3-F XXX XX 037 R 01

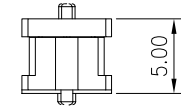
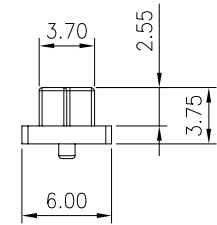
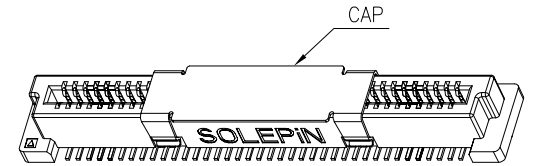
Pin数码 SEE TABLE	端子电镀: G0=Gold Flash G1=1u" Gold G2=3u" Gold G3=5u" Gold G4=10u" Gold G5=15u" Gold G6=30u" Gold	塑胶高度: 037=3.75mm	包装方式: T=TUBE P=TUBE+CAP R=TAPE REEL E=PE袋
--------------------	---	---------------------	---

TABLE.

PIN No.	A	B	C	D
010=2*05PIN	9.80	3.20	5.10	8.20
020=2*10PIN	13.80	7.20	9.10	12.20
030=2*15PIN	17.80	11.20	13.10	16.20
040=2*20PIN	21.80	15.20	17.10	20.20
050=2*25PIN	25.80	19.20	21.10	24.20
060=2*30PIN	29.80	23.20	25.10	28.20
070=2*35PIN	33.80	27.20	29.10	32.20
080=2*40PIN	37.80	31.20	33.10	36.20
100=2*50PIN	45.80	39.20	41.10	44.20
120=2*60PIN	53.80	47.20	49.10	52.20
140=2*70PIN	61.80	55.20	57.10	60.20
150=2*75PIN	65.80	59.20	61.10	64.20
160=2*80PIN	69.80	63.20	65.10	68.20
180=2*90PIN	77.80	71.20	73.10	76.20
200=2*100PIN	85.80	79.20	81.10	84.20



RECOMMENDED PCB LAYOUT(TOP SIDE)
PCB BOARD TOLERANCE±0.05



产品合高5.0mm

					OPERATION	DRAW	WLY	2019.08.22	SOLEPIN 东莞市硕品电子有限公司 Professional connector manufacturer DONGGUAN SOLEPIN ELECTRONICS CO., LTD.				
					X.X ±0.40	DESIGN	Jensen	2019.08.22					
					X.XX ±0.25	CHECK	Jack	2019.08.22					
					X.XXX ±0.15	APPROVE	Andy	2019.08.22					
AO					Angle ±3°				SHEET	1/1	TITLE:	0.80mm BTB 母座直立式SMT H5.0	
REV	DATE	MODIFICATION DESCRIPTION		CHANGE	APPROVE	UNIT	mm	SCALE	1:1	PROJ.	Φ	DRAW NO.	SP-075