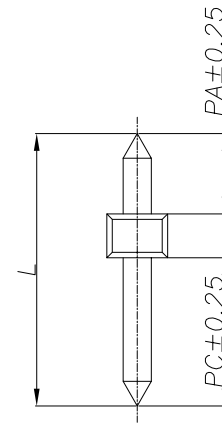
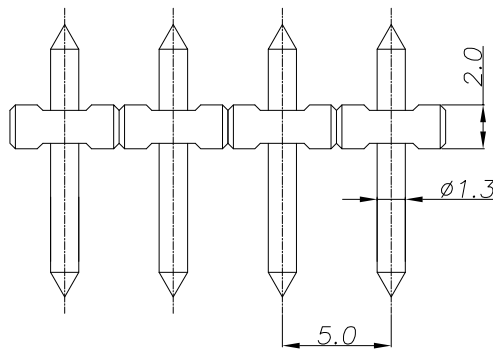
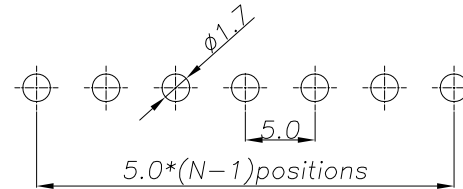


Recommended P.C.B Layout(Top Side)
(PCB BOARD TOLERANCE±0.05)



SPECIFICATIONS
Rated Current:1.0AMP
Contact Resistance:20mΩ Max
Withstand Voltage:1000V AC/DC
Insulation Resistance:5000MΩ Min
Operation Temperature:-40°C to +105°C

Contact Material:Brass
Contact Plating:Au Over Ni
Insulator Material:Polyester(UL94V-0)
Standard: PA6T
Max.Processing Temp: 250°C for 30-60 seconds
(260°C for 10 seconds)

Dimension antitheses list			
ITEM	PA	PC	L
Standard	3.80	6.70	12.50
Alternate			

Ordering Information

PZ 500 - * - N - Z - * - **

No. of Rows
1=Single Row
2=Dual Row

No. of Pins
2-40Pin

Type
2=直插
3=弯插
4=贴片

Length
(mm)

Contact Plating
G0:Gold Flash
G1:1u" Gold
G2:3u" Gold
G3:5u" Gold
G4:10u" Gold
G5:15u" Gold
G6:30u" Gold
S0:Gold Flash/Tin
S1:Tin

			GENERAL TOLERANCE	制图 DRAWING	<div> 深圳市华灿天禄电子有限公司 ShenzhenhuacantianluELECTRONICS CO.,LTD </div>			
			DIM TOL	审核 CHECK				
			X. X ±0.30	批准 APPROVAL	产品名称 TITLE	5.0 单排 直排针(塑高2.0)	版本 REV.	A
			X. XX ±0.20	比例 SCALE	产品料号 PART NO.	PZ500-1-N-Z-2.0-XX(L12.5)	单位 UNITS	mm
			X. XXX ±0.10	投影 Projection	材料 MATERIAL		页次 SHEET	1/1
序号 No.	变更内容 MODIFY CONTENT	日期 MODIFY DATE	Angle ±3.0°					