

# TSYS01 Digital Temperature Sensor



- High Accuracy Temperature Sensor
- 16/24 bit Resolution
- Low Power
- SPI/I<sup>2</sup>C Interface
- QFN16 Package

## DESCRIPTION

The TSYS01 is a single chip, versatile, new technology temperature sensor. The TSYS01 provides factory calibrated temperature information. It includes a temperature sensing chip and a 24 bit  $\Delta\Sigma$ -ADC. The essence of the digital 24 bit temperature value and the internal factory set calibration values lead to highly accurate temperature information accompanied by high measurement resolution.

The TSYS01 can be interfaced to any microcontroller by an I<sup>2</sup>C or SPI interface. This microcontroller has to calculate the temperature result based on the ADC values and the calibration parameters.

The basic working principle is:

- Converting temperature into digital 16/24 bit ADC value
- Providing calibration coefficients
- Providing ADC value and calibration coefficients by SPI or I<sup>2</sup>C interface.

## FEATURES

High Accuracy  $\pm 0.1^\circ\text{C}$  @ Temp.:  $-5^\circ\text{C} \dots +50^\circ\text{C}$   
 Adjustment of high accuracy temp. range on request  
 Low Current,  $< 12.5 \mu\text{A}$  (standby  $< 0.14 \mu\text{A}$ )  
 SPI / I<sup>2</sup>C Interface  
 Small Package: QFN16  
 Operating Temperature Range:  $-40^\circ\text{C} \dots +125^\circ\text{C}$

## APPLICATIONS

Industrial Control  
 Replacement of Thermistors and NTCs  
 Heating / Cooling Systems  
 HVACR

# TSYS01 Digital Temperature Sensor

## ABSOLUTE MAXIMUM RATINGS

Absolute maximum ratings are limiting values of permitted operation and should never be exceeded under the worst possible conditions either initially or consequently. If exceeded by even the smallest amount, instantaneous catastrophic failure can occur. And even if the device continues to operate satisfactorily, its life may be considerably shortened.

Parameter	Symbol	Conditions	Min	Typ	Max	Unit
Supply Voltage	V <sub>DD</sub>		-0.3		+3.6	V
Operating Temperature	T <sub>op</sub>		-40		+125	°C
Storage temperature	T <sub>stor</sub>		-55		+150	°C
ESD rating	ESD	Human Body Model (HBM) pin to pin including VDD and GND	-4		+4	kV
Humidity	Hum		Non condensing			

## OPERATING CONDITIONS

Parameter	Symbol	Conditions	Min	Typ	Max	Unit
Operating Supply Voltage	V <sub>DD</sub>	stabilized	2.2		3.6	V
High Accuracy Supply Voltage	V <sub>DD</sub>	To achieve Acc1	3.2		3.4	V
Supply Current	I <sub>DD</sub>	1 sample per second			12.5	µA
Standby current	I <sub>S</sub>	No conversion, VDD = 3V T = 25°C T = 85°C		0.02 0.70	0.14 1.40	µA µA
Peak Supply Current	I <sub>DD</sub>	During conversion		1.4		mA
Conversion time	T <sub>CONV</sub>		7.40	8.22	9.04	ms
Serial Data Clock SPI	F <sub>SCLK</sub>				20	MHz
Serial Data Clock I <sup>2</sup> C	F <sub>SCL</sub>				400	kHz
VDD Capacitor		Place close to the chip	100nF			

## OPERATIONAL CHARACTERISTICS

If not otherwise noted, 3.3V supply voltage is applied.

Parameter	Symbol	Conditions	Min	Typ	Max	Unit
Temperature Measurement Range	T <sub>RANG</sub>		-40		125	°C
Accuracy 1	T <sub>ACC1</sub>	-5°C < T < +50°C V <sub>DD</sub> = 3.2V – 3.4V	-0.1		+0.1	°C
Accuracy 2	T <sub>ACC2</sub>	-40°C < T < +125°C V <sub>DD</sub> = 3.2V – 3.4V	-0.5		+0.5	°C
PSSR		V <sub>DD</sub> = 2.7 – 3.6 T = 25°C, C = 100nF			0.2	°C
Temperature Resolution	T <sub>RES</sub>				0.01	°C
Time Constant	T	t <sub>10-90</sub> T <sub>1</sub> =25°C T <sub>2</sub> =75°C PCB 900mm <sup>2</sup> x 1.5mm FR4		9		s
Self Heating	SH <sub>1</sub>	10 samples/s, 60s, still air			0.02	°C

# TSYS01 Digital Temperature Sensor

## ANALOGUE TO DIGITAL CONVERTER

Parameter	Symbol	Conditions	Min	Typ	Max	Unit
Output Word				24		bit
Conversion Time	$t_c$		7.40	8.22	9.04	ms

## DIGITAL INPUTS (SCLK, SDI, CSB, PS)

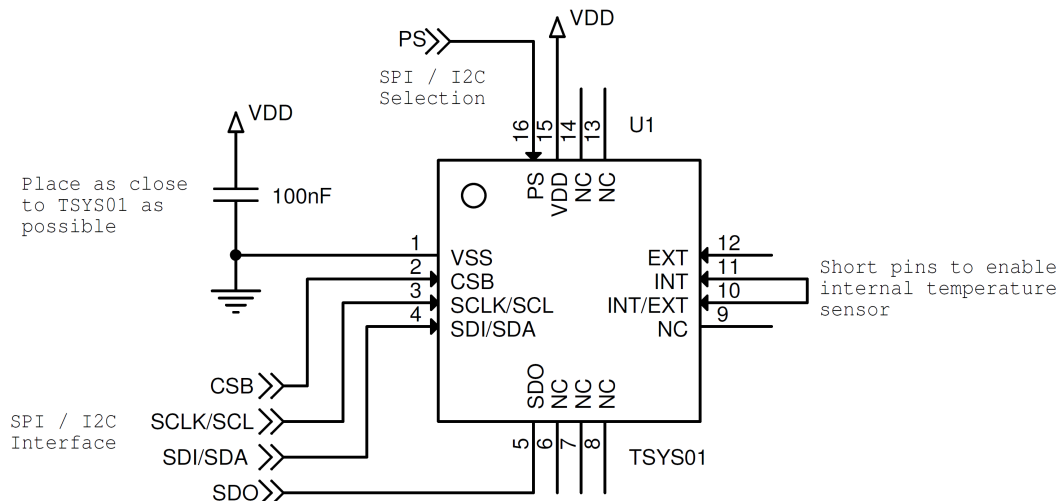
Parameter	Symbol	Conditions	Min	Typ	Max	Unit
Input High Voltage	$V_{IH}$	$V_{DD} = 2.2 \dots 3.6V$	$0.7 V_{DD}$		$V_{DD}$	V
Input Low Voltage	$V_{IL}$	$V_{DD} = 2.2 \dots 3.6V$	$0.0 V_{DD}$		$0.3 V_{DD}$	V
CS low to first SCLK rising	$t_{CSL}$		21			ns
CS high to first SCLK rising	$t_{CSH}$		21			ns
SDI setup to first SCLK rising	$T_{DSO}$		6			ns
SDI hold to first SCLK rising	$T_{DO}$		6			ns

## DIGITAL OUTPUTS (SDA, SDO)

Parameter	Symbol	Conditions	Min	Typ	Max	Unit
Output High Voltage	$V_{OH}$	$I_{Source} = 1mA$	$0.8 V_{DD}$		$V_{DD}$	V
Output Low Voltage	$V_{OL}$	$I_{Sink} = 1mA$	$0.0 V_{DD}$		$0.2 V_{DD}$	V
SDO setup to first SCLK rising	$t_{QS}$		10			ns
SDO hold to first SCLK rising	$t_{QH}$		0			ns

# TSYS01 Digital Temperature Sensor

## CONNECTION DIAGRAM



## PIN FUNCTION TABLE

Pin	Name	Type	Function
1	VSS	G	Ground
2	CSB	DI	SPI: Chip Select (active low) I <sup>2</sup> C: Address Selection
3	SCLK/SCL	DI	SPI: Serial Data Clock I <sup>2</sup> C: Serial Data Clock
4	SDI/SDA	DIO	SPI: Serial Data Input I <sup>2</sup> C: Data Input / Output
5	SDO	DO	SPI: Serial Data Output
6 – 9	NC	---	Not connected / Do not connect
10	INT / EXT	DI/AI	Internal / External Sensor Selection Internal Sensor: Connect Pin10 with Pin11 External Sensor: Connect external Sensor
11	INT	DI/AI	Internal / External Sensor Selection Internal Sensor: Connect Pin11 with Pin10 External Sensor: Leave Unconnected
12	EXT	DI/AI	Internal / External Sensor Selection Internal Sensor: Leave Unconnected External Sensor: Connect external Sensor
13 – 14	NC	---	Not connected / Do not connect
15	VDD	P	Supply Voltage
16	PS	DI	Communication protocol select (0=SPI, 1=I <sup>2</sup> C)

# TSYS01 Digital Temperature Sensor

## INTERFACE DESCRIPTION

### PROTOCOL SELECTION

PS pin input level has to be defined in dependence to protocol selection.

- PS = 0 activates SPI.
- PS = 1 activates I<sup>2</sup>C.

### I<sup>2</sup>C INTERFACE

A I<sup>2</sup>C communication message starts with a start condition and it is ended by a stop condition. Each command consists of two bytes: the address byte and command byte.

### I<sup>2</sup>C ADDRESS SELECTION

The I<sup>2</sup>C address can be selected by CSB pin.

- CSB=1 then the address is 1110110x.
- CSB=0 the address is 1110111x.

Therefore, two TSYS01 can be interfaced on the same I<sup>2</sup>C bus.

### SPI INTERFACE

The serial interface is a 4-wire SPI bus, operating as a slave. CS (chip select), SCLK (serial clock), SDI (serial data in), and SDO (serial data out) are used to interact with the SPI master.

Communication with the chip starts when CS is pulled to low and ends when CS is pulled to high.

SCLK is controlled by the SPI master and idles low (SCLK low on CS transitions, mode 0).

A mode where the clock alternatively idles high is also supported (mode 3).

### COMMANDS

The commands are the same for SPI and I<sup>2</sup>C interface.

There are four commands:

- Reset
- Read PROM (calibration parameters)
- Start ADC Temperature conversion
- Read ADC Temperature result

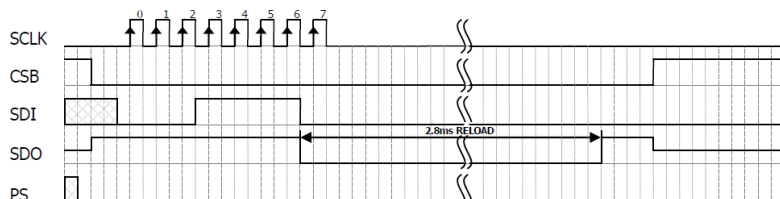
Command	Hex Value
Reset	0x1E
Start ADC Temperature Conversion	0x48
Read ADC Temperature Result	0x00
PROM Read Address 0	0xA0
PROM Read Address 1	0xA2
PROM Read Address 2	0xA4
PROM Read Address 3	0xA6
PROM Read Address 4	0xA8
PROM Read Address 5	0xAA
PROM Read Address 6	0xAC
PROM Read Address 7	0xAE

# TSYS01 Digital Temperature Sensor

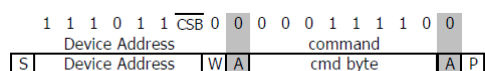
## RESET SEQUENCE

The Reset sequence has to be sent once after power-on. It can be also used to reset the device ROM from an unknown condition.

### SPI



### I<sup>2</sup>C

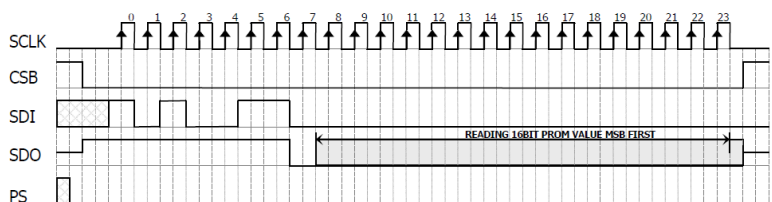


From Master    S = Start Condition    W = Write    A = Acknowledge  
 From Slave    P = Stop Condition    R = Read    N = Not Acknowledgement

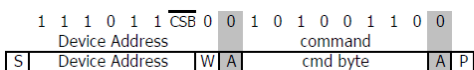
## PROM READ SEQUENCE

The PROM Read command consists of two parts. First command sets up the system into PROM read mode. The second part gets the data from the system. Below examples are sequences to read address 3 (command 0xA6).

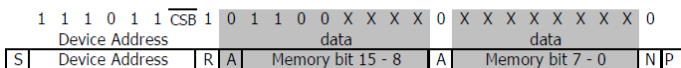
### SPI



### I<sup>2</sup>C



From Master    S = Start Condition    W = Write    A = Acknowledge  
 From Slave    P = Stop Condition    R = Read    N = Not Acknowledgement



From Master    S = Start Condition    W = Write    A = Acknowledge  
 From Slave    P = Stop Condition    R = Read    N = Not Acknowledgement

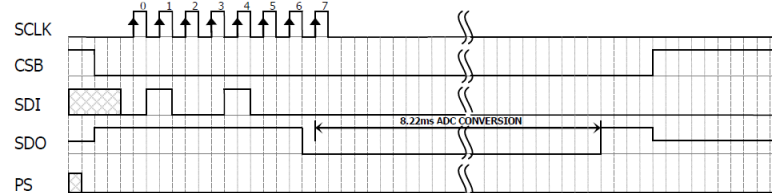
# TSYS01 Digital Temperature Sensor

## CONVERSION SEQUENCE

A conversion has to be started by sending this command. The sensor stays busy until conversion is done. When conversion is finished the data can be accessed by using ADC read command

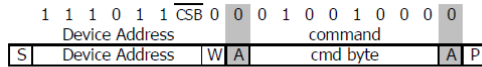
### SPI

The last clock will start the conversion which TSYS01 indicates by pulling SDO low. SDO goes high when conversion is completed.



### I<sup>2</sup>C

When the command is sent the TSYS01 stays busy until the conversion is done. All other commands except the reset command will not be executed during this time. When the conversion is finished the data can be accessed by sending a ADC read command, when an acknowledge appears from TSYS01.

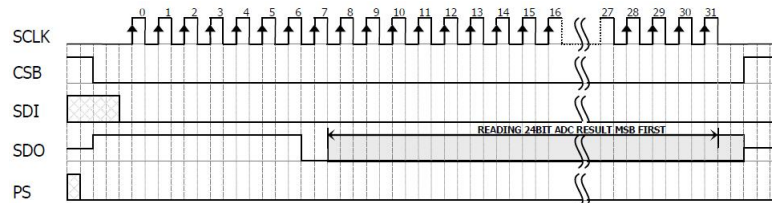


From Master    S = Start Condition    W = Write    A = Acknowledge  
 From Slave    P = Stop Condition    R = Read    N = Not Acknowledge

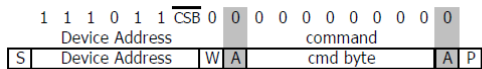
## READ ADC RESULT

After the conversion command the ADC result is read using ADC read command. Repeated ADC read commands, or command executed without prior conversion will return all 0 as result.

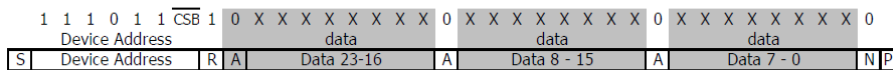
### SPI



### I<sup>2</sup>C



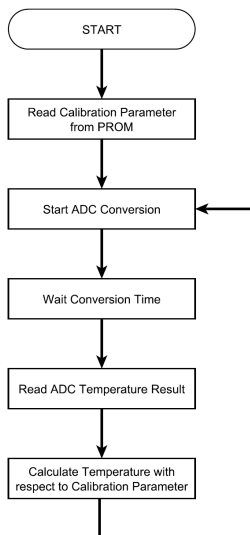
From Master    S = Start Condition    W = Write    A = Acknowledge  
 From Slave    P = Stop Condition    R = Read    N = Not Acknowledge



From Master    S = Start Condition    W = Write    A = Acknowledge  
 From Slave    P = Stop Condition    R = Read    N = Not Acknowledge

# TSYS01 Digital Temperature Sensor

## TEMPERATURE CALCULATION



### CALIBRATION PARAMETER

Variable	Description	Command	Size / bit	Min	Max	Example
k <sub>4</sub>	Coefficient k <sub>4</sub> of polynomial	0xA2	16	0	65535	28446
k <sub>3</sub>	Coefficient k <sub>3</sub> of polynomial	0xA4	16	0	65535	24926
k <sub>2</sub>	Coefficient k <sub>2</sub> of polynomial	0xA6	16	0	65535	36016
k <sub>1</sub>	Coefficient k <sub>1</sub> of polynomial	0xA8	16	0	65535	32791
k <sub>0</sub>	Coefficient k <sub>0</sub> of polynomial	0xAA	16	0	65535	40781

### TEMPERATURE POLYNOMIAL

ADC24: ADC value  
ADC16: ADC24 / 256

$$T / ^\circ\text{C} = (-2) * k_4 * 10^{-21} * ADC16^4 + 4 * k_3 * 10^{-16} * ADC16^3 + (-2) * k_2 * 10^{-11} * ADC16^2 + 1 * k_1 * 10^{-6} * ADC16 + (-1.5) * k_0 * 10^{-2}$$

### EXAMPLE

ADC24: 9378708  
ADC16: 9378708 / 256 = 36636

$$T / ^\circ\text{C} = (-2) * 28446 * 10^{-21} * 36636^4 + 4 * 24926 * 10^{-16} * 36636^3 + (-2) * 36016 * 10^{-11} * 36636^2 + 1 * 32791 * 10^{-6} * 36636 + (-1.5) * 40781 * 10^{-2}$$

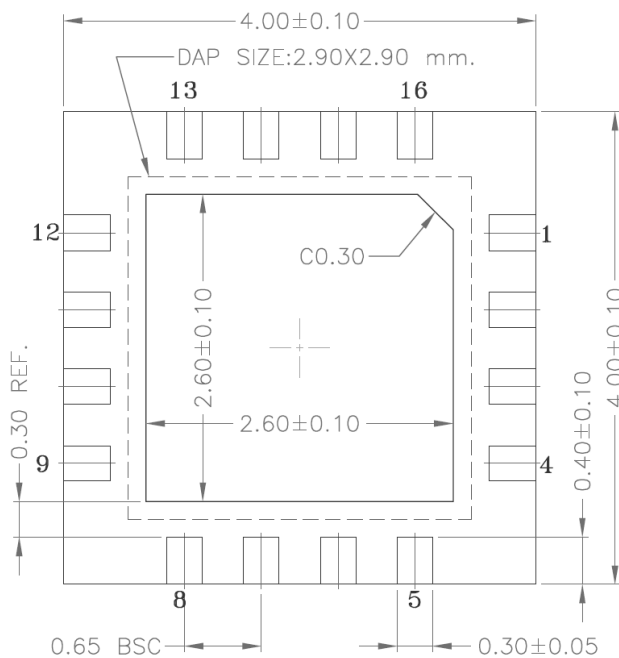
$$T / ^\circ\text{C} = \underline{10.55}$$



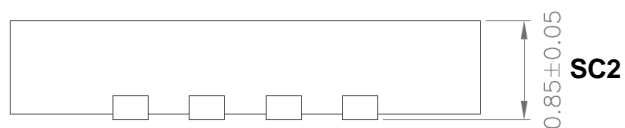
# TSYS01 Digital Temperature Sensor

## DIMENSIONS

### BOTTOM VIEW



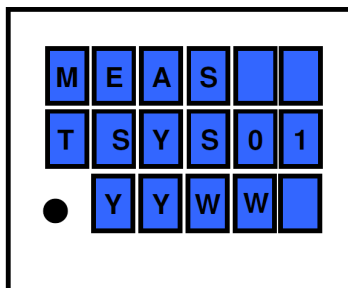
### SIDE VIEW



SC: Special Characteristic, tested while production

## MARKING

Line	Description	Example
1	Manufacturer	MEAS
2	Product Name	TSYS01
3	Pin 1 Dot, Date Code YYWW	1141



# TSYS01 Digital Temperature Sensor

## ORDER INFORMATION

Please order this product using following:

Part Number	Part Description
G-NICO-018	TSYS01 Digital Temperature Sensor

## EMC

Due to the use of these modules for OEM application no CE declaration is done.

Especially line coupled disturbances like surge, burst, HF etc. cannot be removed by the module due to the small board area and low price feature. There is no protection circuit against reverse polarity or over voltage implemented.

The module will be designed using capacitors for blocking and ground plane areas in order to prevent wireless coupled disturbances as good as possible.

## DEFINITIONS AND DISCLAIMERS

- Application information – Applications that are described herein for any of these products are for illustrative purpose only. MEAS Deutschland GmbH makes no representation or warranty that such applications will be suitable for the specified use without further testing or modification.
- Life support applications – These products are not designed for use in life support appliances, devices, or systems where malfunctions of these products can reasonably be expected to result in personal injury.  
MEAS Deutschland GmbH customers using or selling this product for use in such applications do so at their own risk and agree to fully indemnify MEAS Deutschland GmbH for any damages resulting from such improper use or sale.

## TECHNICAL CONTACT INFORMATION

NORTH AMERICA	EUROPE	ASIA
<p>Measurement Specialties, Inc. 1000 Lucas Way Hampton, VA 23666 Tel: 1-800-555-1551 Fax: 1-757-766-4297 Email: sales@meas-spec.com Web: www.meas-spec.com</p>	<p>Europe MEAS Deutschland GmbH Hauert 13, D-44227 Dortmund, Germany Phone: +49-(0)231-9740-0 Fax: +49-(0)231-9740-20 Email: info.de@meas-spec.com Web: www.meas-spec.com</p>	<p>Measurement Specialties China Ltd. No. 26, Langshan Road, Shenzhen High-tech Park (North) Nanshan District, Shenzhen, China 518107 Phone: +86-755-33305088 Fax: +86-755-33305099 Email: info.cn@meas-spec.com Web: www.meas-spec.com</p>

The information in this sheet has been carefully reviewed and is believed to be accurate; however, no responsibility is assumed for inaccuracies. Furthermore, this information does not convey to the purchaser of such devices any license under the patent rights to the manufacturer. Measurement Specialties, Inc. reserves the right to make changes without further notice to any product herein. Measurement Specialties, Inc. makes no warranty, representation or guarantee regarding the suitability of its product for any particular purpose, nor does Measurement Specialties, Inc. assume any liability arising out of the application or use of any product or circuit and specifically disclaims any and all liability, including without limitation consequential or incidental damages. Typical parameters can and do vary in different applications. All operating parameters must be validated for each customer application by customer's technical experts. Measurement Specialties, Inc. does not convey any license under its patent rights nor the rights of others.