

THIS DRAWING IS UNPUBLISHED.

RELEASED FOR PUBLICATION

20

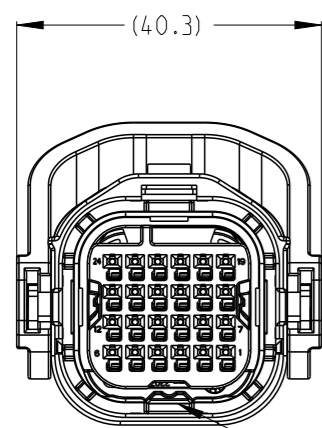
© COPYRIGHT 20 BY -

ALL RIGHTS RESERVED.

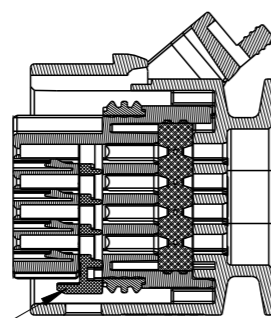
REVISIONS

| P | LTR | DESCRIPTION | DATE | DWN | APVD |
|----|-----|---------------|-----------|-----|------|
| A3 | | ECR-20-004103 | 18MAR2020 | J.L | I.Y |
| A4 | | ECR-21-002162 | 22FEB2021 | J.L | J.Z |
| A5 | | ECR-22-126366 | 11JAN2022 | D.Z | I.Y |
| A6 | | ECN-22-173421 | 07SEP22 | W.H | J.Z |

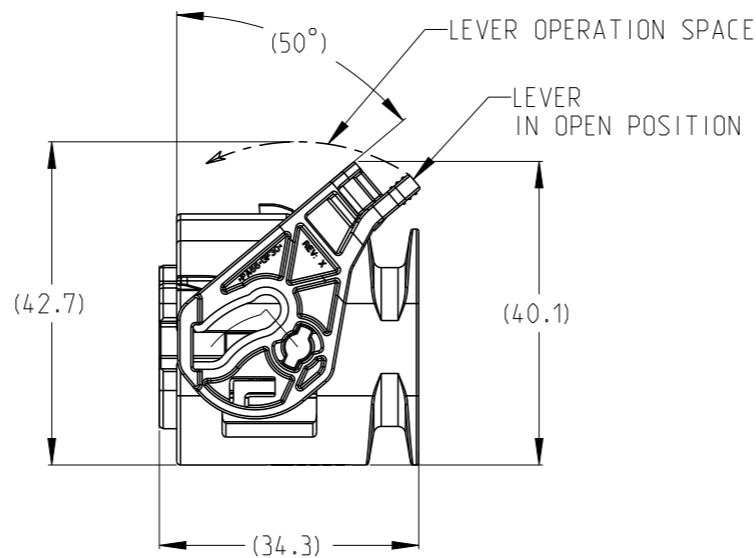
2307072-1 AS SHOW



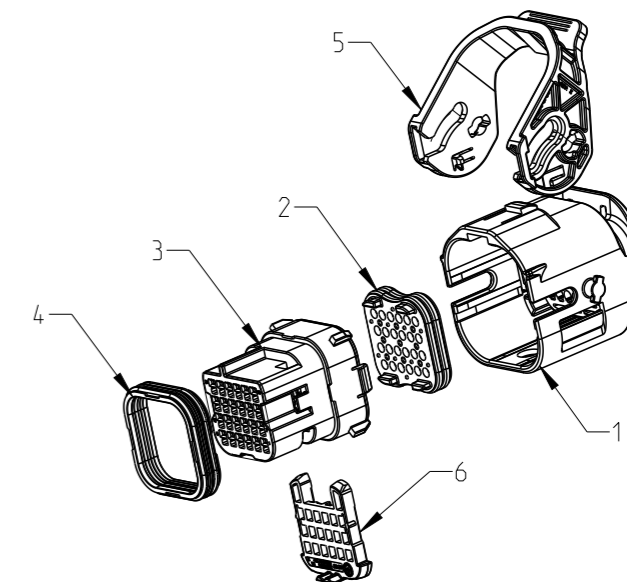
2ND-LOCK IN PRE-LOCK POSITION



SECTION A-A



LEVER OPERATION SPACE
LEVER IN OPEN POSITION



NOTES:

- LEVER MUST BE IN OPEN POSITION FOR DELIVERY.
- 2ND LOCK MUST BE IN PRE-LOCK POSITION FOR DELIVERY. 2ND LOCK MUST BE PUSHED IN END-LOCK POSITION AFTER TERMINAL ON SITE.
- APPLICABLE MATING PARTS REFER TO TE PN 2305367.
- APPLICABLE MCON 1.2 CLEAN BODY CONTACT SEE TABLE:

| WIRE SIZE (mm ²) | TE CONTACT PN | INSULATION RANGE | REMARK |
|------------------------------|---------------|------------------|---------------------|
| 0.5~0.75 | 1670144 | FLR Ø1.4~1.9mm | SEE DRAWING 1534326 |

PIN OUT CONFIGURATION

| POS | 1 | 2 | 3 | 4 | 5 | 6 | 7 | 8 | 9 | 10 | 11 | 12 | 13 | 14 | 15 | 16 | 17 | 18 | 19 | 20 | 21 | 22 | 23 | 24 |
|-------------|---|---|---|---|---|---|---|---|---|----|----|----|----|----|----|----|----|----|----|----|----|----|----|----|
| 2307072-1 | | | | | | | | | | | | | | | | | | | | | | | | |
| 2307072-2 | X | X | X | X | X | X | | | | | | | | | | | | | X | X | X | X | X | X |
| 2307072-3 | | | | | | | | | | | | | | | | X | X | X | X | X | X | X | X | X |
| 2307072-4 | | | | | | | | | | | | | | | | | | | | | | | X | |
| 2307072-5 | | | | | | | | | | | | | | | | | X | X | X | X | X | X | X | X |
| 2307072-6 | | | X | X | | | | | | | | | | | | | X | X | X | X | X | X | X | X |
| 2307072-7 | X | X | | | X | X | | | | | | | | | | | | X | X | X | X | X | X | X |
| 2307072-8 | | | | | | X | | | | | | X | | | | | X | X | | | | | X | |
| 2307072-9 | X | X | X | X | X | | | | | | | | | | | | | | X | X | X | X | X | X |
| 1-2307072-1 | X | X | X | X | X | X | X | X | | | | | | | | | | | X | X | X | X | X | X |



TE PART NUMBER X INDICATE THE CLOSED CAVITY

THIS DRAWING IS A CONTROLLED DOCUMENT.

DWN R.TANG 02NOV2016
 CHK SY.WANG 02NOV2016
 APVD I.YIN 02NOV2016



NAME 24W MCON 1.2 PLUG ASSY.

| TE ASSEMBLY PN | DESCRIPTION | MATERIAL | COLOR | ITEM |
|----------------|--------------|-----------|--------|------|
| X-2307072-X | BASE HOUSING | PA66+GF30 | BLACK | 1 |
| | FAMILY SEAL | SILICONE | ORANGE | 2 |
| | CAVITY BLOCK | PA66+GF35 | BLACK | 3 |
| | O-RING | SILICONE | ORANGE | 4 |
| | LEVER | PA66+GF30 | BLACK | 5 |
| | 2ND LOCK | PA66+GF30 | RED | 6 |

| DIMENSIONS: | TOLERANCES UNLESS OTHERWISE SPECIFIED: |
|-------------|--|
| mm | 0 PLC ±0.3 |
| | 1 PLC ±0.3 |
| | 2 PLC ±0.2 |
| | 3 PLC ± |
| | 4 PLC ± |
| | ANGLES ±2° |
| MATERIAL | FINISH |
| - | - |
| - | - |

PRODUCT SPEC 108-101524
 APPLICATION SPEC -
 WEIGHT -
 CUSTOMER DRAWING

| SIZE | CAGE CODE | DRAWING NO | RESTRICTED TO |
|-----------|-----------|--------------|---------------|
| A3 | - | ©-2307072 | - |
| SCALE 1:1 | | SHEET 1 OF 1 | REV A6 |