

- NOTES:
- ELECTRICAL CHARACTERISTICS
 - VOLTAGE RATING: 250V
 - CONTACT RESISTANCE: 10 MILLIOHMS MAX. INITIAL.
15 MILLIOHMS MAX. AFTER TEST.
 - INSULATION RESISTANCE: 1000 MEGOHMS MIN. AT 500 VDC.
 - DIELECTRIC WITHSTAND VOLTAGE: 500 VDC RMS. MIN. AT SEA LEVEL.
 - MECHANICAL CHARACTERISTICS:
 - TOTAL INSERTION FORCE: 70.0 N MAX USE 1.60mm THICKNESS GAUGE.
 - TOTAL WITHDRAW FORCE: 10 N MIN USE 1.60mm THICKNESS GAUGE.
 - CONTACT RETENTION FORCE: 0.5 Kgf MIN.
 - DURABILITY: 200 CYCLES.
 - ENVIRONMENTAL CHARACTERISTICS:
 - OPERATION TEMPERATURE RANGE: -55°C TO +105°C.
 - LEAD-FREE AND ROHS COMPLIANT PRODUCT
 - UNLESS OTHERWISE SPECIFIED, ALL TOLERANCES FOLLOW DRAWING COMMON STANDARD.
 - PACKAGING: SEE PACKAGE SPECIFICATION.
 - POWER SINGLE PIN MAX CURRENT 36A (SUM: 12 PIN),
SIGNAL SINGLE PIN MAX CURRENT 7A (SUM: 14 PIN).
 - CONTACT PLATING: CONTACT SEGMENT: NI: 50-120 u", AU: 15/30u"; (SEE NOTE 1)
WELDING SEGMENT: NI: 50-120 u", TIN: 80-140u"
 - DATE CODE LOCATION & PART NUMBER IS SHOWN ABOVE
DATE CODE FORMAT: YYWW
YY=YEAR
WW=WEEK
 - PART NO :

81052 6 0 X X X

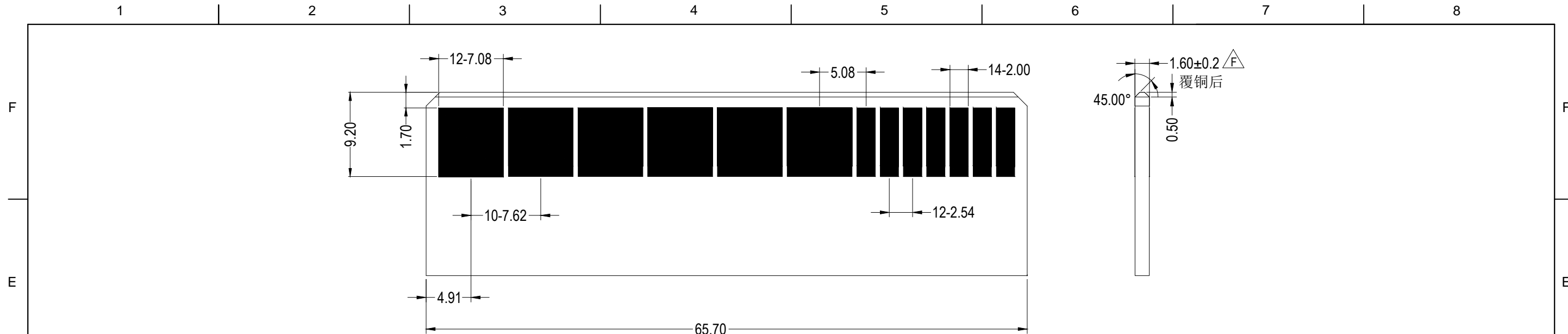
△ E PACKING TYPE
 0: TRAY
 1: IC TUBE

CONTACT GOLD PLATING:
 2: 30u" GOLD PLATING
 3: 15u" GOLD PLATING

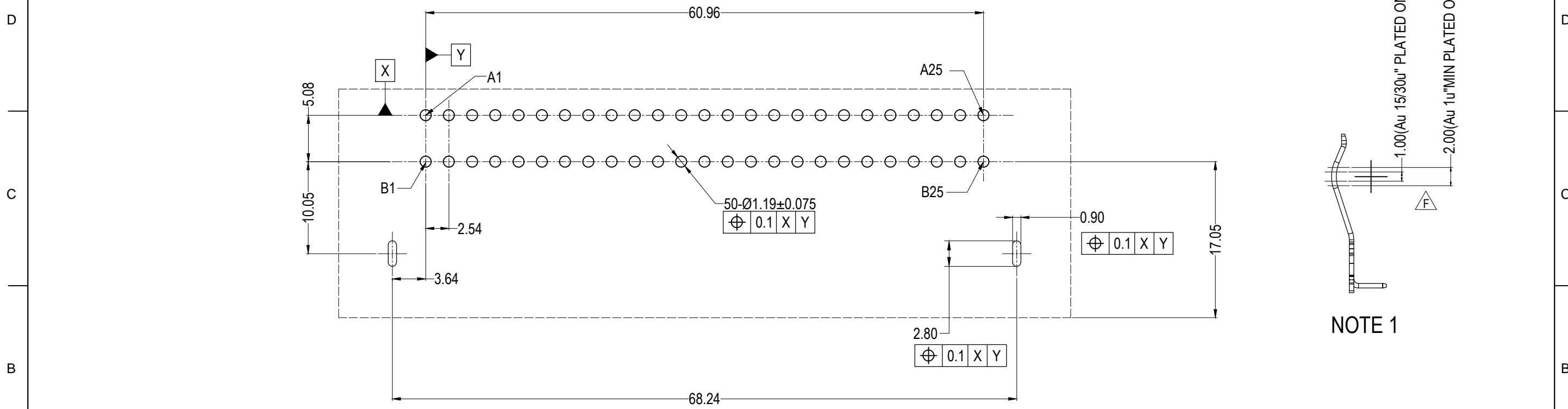
| ITEM | DESCRIPTION | QTY | MATERIAL | PLATING & COLOR |
|------|----------------|-----|---------------|------------------------|
| 4 | POWER CONTACT | 12 | COPPER ALLOY | SEE NOTES 8 / PART NO. |
| 3 | SIGNAL CONTACT | 14 | COPPER ALLOY | SEE NOTES 8 / PART NO. |
| 2 | HOOK | 2 | COPPER ALLOY | TIN 80-140u" |
| 1 | HOUSING | 1 | THERMOPLASTIC | BLACK |

| REV. | DESCRIPTION | DATE | SIZE | UNIT | GENERAL TOLERANCES (UNLESS SPECIFIED) | PART NO. | TITLE: |
|------|---------------------------|----------|------|------|---------------------------------------|---------------------------|-----------------------------|
| F | PRD-2008001/CHANGE SIZE | 08/04'20 | A3 | mm | X ± 0.30 X.° ± 3° | 8105260XXX | 50 POS 12A R/A P/S ISA CONN |
| E | PRD-2004001/ ADD PART NO. | 04/02'20 | | | .XX ± 0.20 .X° ± 2° | | |
| D | PRD-1905012/CHANGE SIZE | 05/22'19 | | | .XXX ± 0.10 .XX° ± 1° | APPROVED: Zlqian 08/04'20 | DWG NO. 10-1052-04 |
| C | PRD-1901004/CHANGE SIZE | 01/17'19 | | | ECN NO. PRD-2008001 | CHECKED: Zqzeng 08/04'20 | CUSTOMER DWG |
| B | PRD-1812012/UPDATED | 12/21'18 | | | | DRAWN: Jsxu 08/04'20 | SCALE 1:1 |
| A | NEW RELEASED | 12/12'18 | | | | | SHEET 1/2 |
| REV. | DESCRIPTION | DATE | | | | | REV. F |

MZF Guangdong MZF Interconnection co., LTD.



RECOMMENDED GOLD FINGER



RECOMMENDED PCB LAYOUT

NOTE 1

| REV. | | | GENERAL TOLERANCES (UNLESS SPECIFIED) | | Guangdong MZF Interconnection co., LTD. | | | | | |
|------|---------------------------|----------|---------------------------------------|-------------|---|------|---------------------------|--|------------------------------------|--|
| F | PRD-2008004/CHENGE SIZE | 08/04'20 | X | ± 0.30 | X.° | ± 3° | PART NO. 8105260XXX | | TITLE: 50 POS 12A R/A P/S ISA CONN | |
| E | PRD-2004001/ ADD PART NO. | 04/02'20 | .XX | ± 0.20 | .X.° | ± 2° | APPROVED: Zlqian 08/04'20 | | DWG NO. 10-1052-04 | |
| D | PRD-1905012/CHENGE SIZE | 05/22'19 | .XXX | ± 0.10 | .XX.° | ± 1° | CHECKED: Zqzeng 08/04'20 | | CUSTOMER DWG | |
| C | PRD-1901004/CHENGE SIZE | 01/17'19 | SIZE | | UNIT | | DRAWN: Jsxu 08/04'20 | | SCALE 1:1 | |
| B | PRD-1812012/UPDATED | 12/21'18 | ECN NO. | PRD-2008001 | | | | | SHEET 2/2 | |
| A | NEW RELEASED | 12/12'18 | A3 | | mm | | | | REV. F | |
| REV. | DESCRIPTION | DATE | | | | | | | | |